

FSA
Information

Tracts 1-23

Kansas
 Gray
 Report ID: FSA-156EZ

U.S. Department of Agriculture
 Farm Service Agency
 Abbreviated 156 Farm Record

FARM: 3513
 Prepared: 7/26/10 11:40 AM
 Crop Year: 2010
 Page: 1 of 4

Operator Name: RENICK FARMS
 Farm Description: COMB OF 3511 1627
 Recon Number:

Farms Associated with Operator:
 3057, 3353, 3405, 3512

Other Producers Associated with Farm:
 None

CRP Contract Number(s): None

Farmland	Cropland	DCP Cropland	WBP	WRP/EWP	CRP Cropland	GRP	Farm Status	Number of Tracts
6435.0	5108.9	5108.9	0.0	0.0	0.0	0.0	Active	6
State Conservation	Other Conservation	Effective DCP Cropland	Double Cropped	NAP	MPL/FWP		FAV/WR History	ACRE Election
0.0	0.0	5108.9	0.0	0.0	0.0		N	None

Crop	Base Acreage	CRP Reduction	CRP Pending	Direct Yield	CC Yield	CCC-505 CRP Reduction
WHEAT	2132.5	0.0	0.0	39	39	0.0
CORN	979.5	0.0	0.0	91	91	0.0
GRAIN SORGHUM	851.4	0.0	0.0	79	79	0.0
Total Base Acres:	3963.4					

Tract Number: 2170 Identifier: ALL OF 36 25 30

BIA Range Unit Number:

HEL Status: HEL: conservation system is being actively applied

Wetland Status: Wetland determinations not complete

WL Violations: None

FAV/WR History
 N

Farmland	Cropland	DCP Cropland	WBP	WRP/EWP	CRP Cropland	GRP
614.0	551.6	551.6	0.0	0.0	0.0	0.0
State Conservation	Other Conservation	Effective DCP Cropland	Double Cropped	NAP	MPL/FWP	
0.0	0.0	551.6	0.0	0.0	0.0	

Owners:	Crop	Base Acreage	Direct Yield	CC Yield	CRP Reduction	CRP Pending	CRP Yield	CCC-505 CRP Reduction
	WHEAT	207.8	36	36	0.0	0.0	0	0.0
	CORN	108.0	73	73	0.0	0.0	0	0.0
	GRAIN SORGHUM	82.0	68	68	0.0	0.0	0	0.0
	Total Base Acres:	397.8						

BEST FARMS INC

Kansas
 Gray
 Report ID: FSA-156EZ

U.S. Department of Agriculture
 Farm Service Agency
 Abbreviated 156 Farm Record

FARM: 3513
 Prepared: 7/26/10 11:40 AM
 Crop Year: 2010
 Page: 2 of 4

Tract Number: 2171 Identifier SEC 1-26-30 SEC 31-25-29

FAV/WR
 History
 N

BIA Range Unit Number:

HEL Status: HEL: conservation system is being actively applied

Wetland Status: Wetland determinations not complete

WL Violations: None

Farmland	Cropland	DCP Cropland	WBP	WRP/EWP	CRP Cropland	GRP
1407.0	1224.7	1224.7	0.0	0.0	0.0	0.0
State Conservation	Other Conservation	Effective DCP Cropland	Double Cropped	NAP	MPL/FWP	
0.0	0.0	1224.7	0.0	0.0	0.0	

Owners:	Crop	Base Acreage	Direct Yield	CC Yield	CRP Reduction	CRP Pending	CRP Yield	CCC-505 CRP Reduction
	WHEAT	570.4	42	42	0.0	0.0	0	0.0
	CORN	219.5	122	122	0.0	0.0	0	0.0
	GRAIN SORGHUM	230.7	92	92	0.0	0.0	0	0.0
	Total Base Acres:	1020.6						
BEST FARMS INC								

Tract Number: 2172 Identifier SEC 35 25 30 & E1/2 34 25 30

FAV/WR
 History
 N

BIA Range Unit Number:

HEL Status: HEL: conservation system is being actively applied

Wetland Status: Wetland determinations not complete

WL Violations: None

Farmland	Cropland	DCP Cropland	WBP	WRP/EWP	CRP Cropland	GRP
929.0	823.9	823.9	0.0	0.0	0.0	0.0
State Conservation	Other Conservation	Effective DCP Cropland	Double Cropped	NAP	MPL/FWP	
0.0	0.0	823.9	0.0	0.0	0.0	

Owners:	Crop	Base Acreage	Direct Yield	CC Yield	CRP Reduction	CRP Pending	CRP Yield	CCC-505 CRP Reduction
	WHEAT	263.8	28	28	0.0	0.0	0	0.0
	CORN	186.3	33	33	0.0	0.0	0	0.0
	GRAIN SORGHUM	99.8	32	32	0.0	0.0	0	0.0
	Total Base Acres:	549.9						
BEST FARMS INC								

Kansas
 Gray
 Report ID: FSA-156EZ

U.S. Department of Agriculture
 Farm Service Agency
 Abbreviated 156 Farm Record

FARM: 3513
 Prepared: 7/26/10 11:40 AM
 Crop Year: 2010
 Page: 3 of 4

Tract Number: 2173 Identifier SE1/4 13 25 31 & 32A IN NE 24 25 31

FAV/WR
 History
 N

BIA Range Unit Number:

HEL Status: HEL: conservation system is being actively applied

Wetland Status: Wetland determinations not complete

WL Violations: None

Farmland	Cropland	DCP Cropland	WBP	WRP/EWP	CRP Cropland	GRP
212.0	210.3	210.3	0.0	0.0	0.0	0.0
State Conservation	Other Conservation	Effective DCP Cropland	Double Cropped	NAP	MPL/FWP	
0.0	0.0	210.3	0.0	0.0	0.0	

Owners:	Crop	Base Acreage	Direct Yield	CC Yield	CRP Reduction	CRP Pending	CRP Yield	CCC-505 CRP Reduction
	WHEAT	88.1	42	42	0.0	0.0	0	0.0
	CORN	34.0	122	122	0.0	0.0	0	0.0
	GRAIN SORGHUM	35.8	92	92	0.0	0.0	0	0.0
	Total Base Acres:	157.9						
BEST FARMS INC								

Tract Number: 2174 Identifier CL IN 23 24 25 26-25-30 & 19&30-25-29

FAV/WR
 History
 N

BIA Range Unit Number:

HEL Status: HEL: conservation system is being actively applied

Wetland Status: Wetland determinations not complete

WL Violations: None

Farmland	Cropland	DCP Cropland	WBP	WRP/EWP	CRP Cropland	GRP
3234.0	2259.6	2259.6	0.0	0.0	0.0	0.0
State Conservation	Other Conservation	Effective DCP Cropland	Double Cropped	NAP	MPL/FWP	
0.0	0.0	2259.6	0.0	0.0	0.0	

Owners:	Crop	Base Acreage	Direct Yield	CC Yield	CRP Reduction	CRP Pending	CRP Yield	CCC-505 CRP Reduction
	WHEAT	986.6	40	40	0.0	0.0	0	0.0
	CORN	425.5	101	101	0.0	0.0	0	0.0
	GRAIN SORGHUM	396.6	84	84	0.0	0.0	0	0.0
	Total Base Acres:	1808.7						
BEST FARMS INC								

Kansas
 Gray
 Report ID: FSA-156EZ

U.S. Department of Agriculture
 Farm Service Agency
 Abbreviated 156 Farm Record

FARM: 3513
 Prepared: 7/26/10 11:40 AM
 Crop Year: 2010
 Page: 4 of 4

Tract Number: 1333836 Identifier 36.5 acres in NW corner 29 25 29

FAV/WR
 History
 N

BIA Range Unit Number:

HEL Status: HEL: conservation system is being actively applied

Wetland Status: Wetland determinations not complete

WL Violations: None

Farmland	Cropland	DCP Cropland	WBP	WRP/EWP	CRP Cropland	GRP
39.0	38.8	38.8	0.0	0.0	0.0	0.0
State Conservation	Other Conservation	Effective DCP Cropland	Double Cropped	NAP	MPL/FWP	
0.0	0.0	38.8	0.0	0.0	0.0	

Owners:	Crop	Base Acreage	Direct Yield	CC Yield	CRP Reduction	CRP Pending	CRP Yield	CCC-505 CRP Reduction
	WHEAT	15.8	42	42	0.0	0.0	0	0.0
	CORN	6.2	122	122	0.0	0.0	0	0.0
	GRAIN SORGHUM	6.5	92	92	0.0	0.0	0	0.0
	Total Base Acres:	28.5						
BEST FARMS INC								

State: Kansas
 County: Gray
 County Office: Gray County Farm Service Agency

U.S. Department of Agriculture
 Farm Service Agency
 2010-DCP CCC-509B Worksheet

Crop	Base Acres	Payment Acres	Direct Yield	CC Yield	Payment Rate	Producer Name	Type	Share %	Direct Annual Payment
Corn	979.5	815.9	91	91	0.28	BEST FARMS INC	OW	0%	\$0
	979.5	815.9	91	91	0.28	RENICK FARMS	OP	100%	\$20,789
Grain Sorghum	851.4	709.2	79	79	0.35	BEST FARMS INC	OW	0%	\$0
	851.4	709.2	79	79	0.35	RENICK FARMS	OP	100%	\$19,609
Wheat	2132.5	1776.4	39	39	0.52	BEST FARMS INC	OW	0%	\$0
	2132.5	1776.4	39	39	0.52	RENICK FARMS	OP	100%	\$36,025

Farm Number: 3513

Total: \$76,423

Tue Apr 13 14:43:28 CDT 2010

Disclaimer:

The direct payment amounts reflected on this statement are based on 2010-DCP payment rates. The amounts may vary due to changes in payment acres, payment yields, producer eligibility, or producer shares.

The distribution of the form does not in any way obligate CCC to disburse the payment amounts reflected.

Note: Payment amounts will be calculated by multiplying payment acres, payment yields, share, permitted/AGI share, cropland factor and the payment rate. The payment amounts reflected on this statement do not take into account the permitted/AGI share or cropland factors. Background information can be obtained from any FSA county office.

F 3513
T 2174
21
167.03

F 3513
T 2174
1
653.98

F 3513
T 2174
26
3.31



United States Department of Agriculture
Farm Service Agency

July 27, 2010

PLSS: 23_25_30 **Gray County, KS**
Farm: 3513
Tract: 2174 1:8,286



Disclaimer: Welland identifiers do not represent the size, shape or specific determination of the area.
Refer to your original determination (CPA-026 and attached maps) for exact welland boundaries and determinations, or contact NRCS.



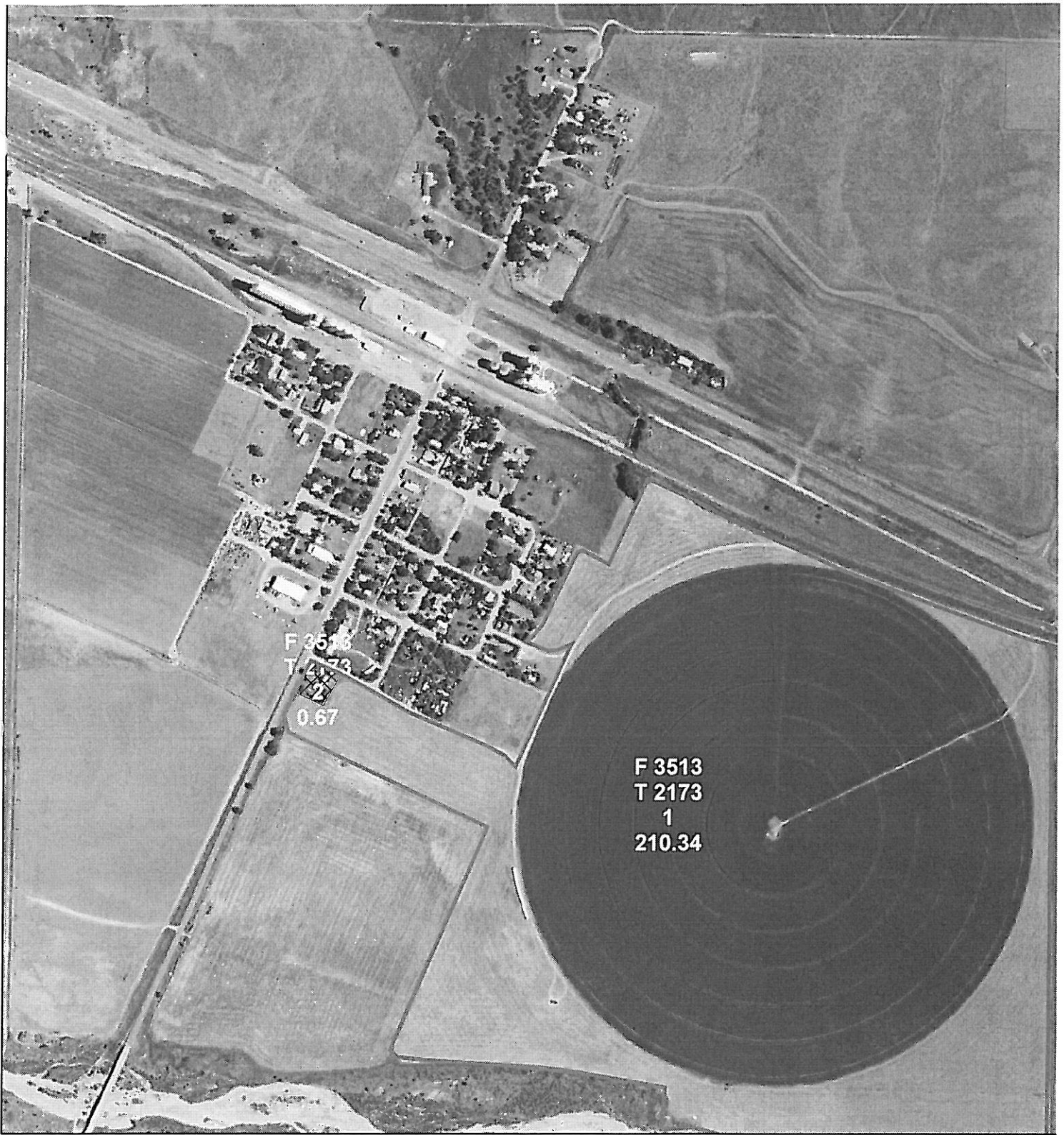
United States Department of Agriculture
Farm Service Agency

July 27, 2010

PLSS: 24_25_30 **Gray County, KS**
Farm: 3513
Tract: 2174 1:8,235



Disclaimer: Wetland identifiers do not represent the size, shape or specific determination of the area.
Refer to your original determination (CPA-026 and attached maps) for exact wetland boundaries and determinations, or contact NRCS.



United States Department of Agriculture
Farm Service Agency

July 27, 2010

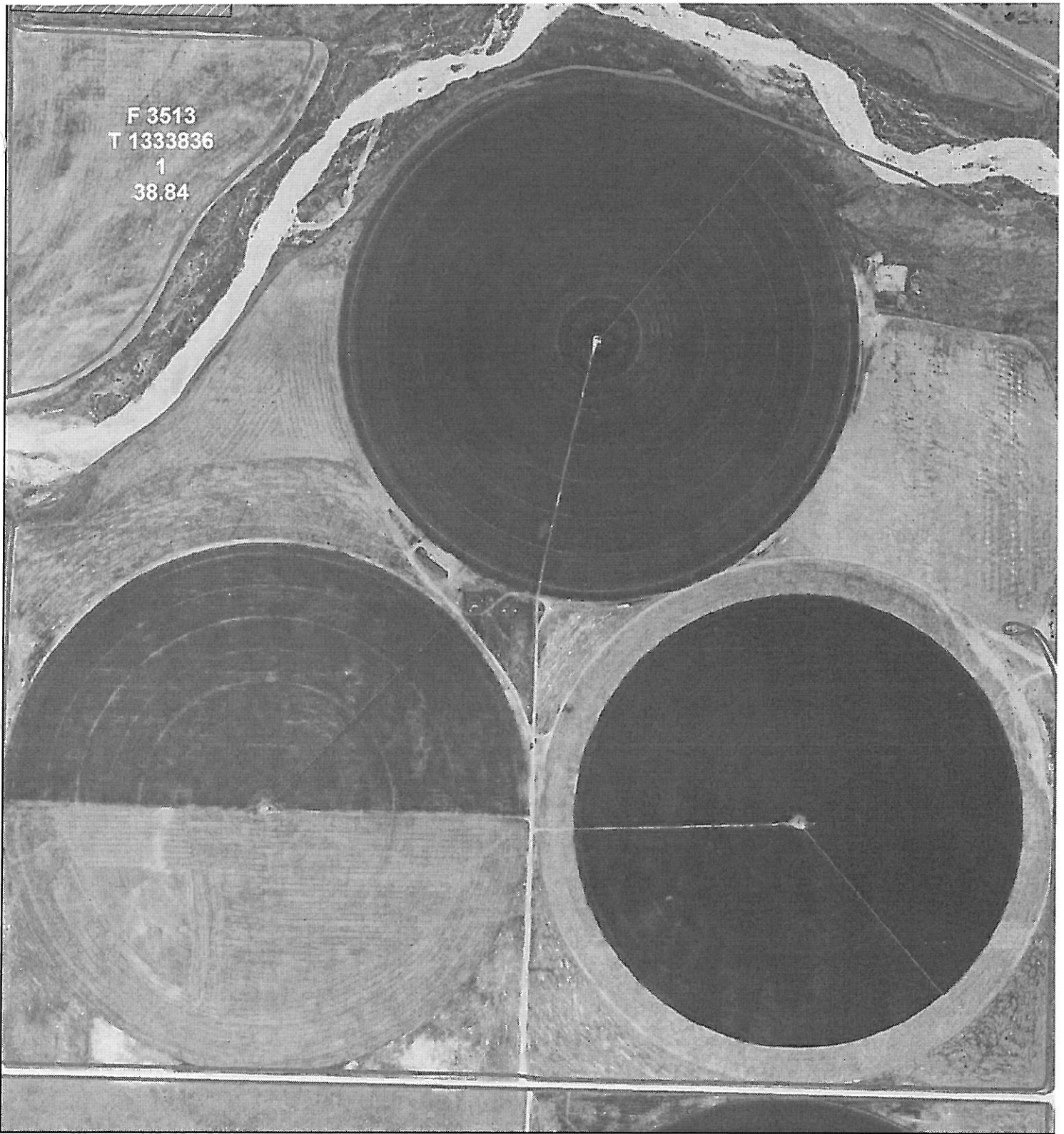
PLSS: 13_25_31
Farm: 3513
Tract: 2173

Gray County, KS

1:8,301



Disclaimer: Wetland identifiers do not represent the size, shape or specific determination of the area.
Refer to your original dermination (CPA-026 and attached maps) for exact wetland boundaries and determinations, or contact NRCS.



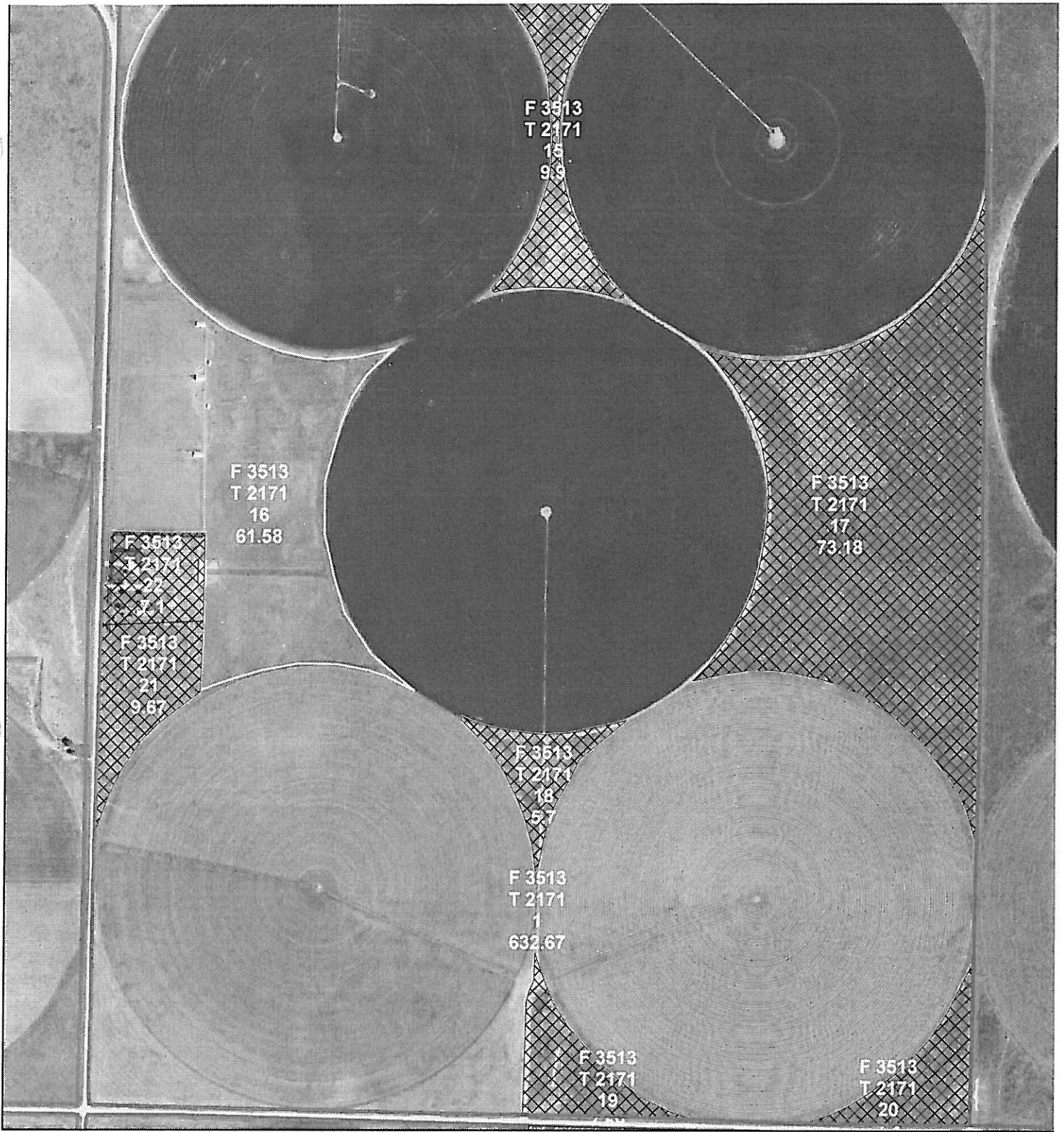
United States Department of Agriculture
Farm Service Agency

July 27, 2010

PLSS: 29_25_29 **Gray County, KS**
Farm: 3513
Tract: 1333836 1:8,150



Disclaimer: Wetland identifiers do not represent the size, shape or specific determination of the area.
Refer to your original dermination (CPA-026 and attached maps) for exact wetland boundaries and determinations, or contact NRCS.



United States Department of Agriculture
Farm Service Agency

July 27, 2010

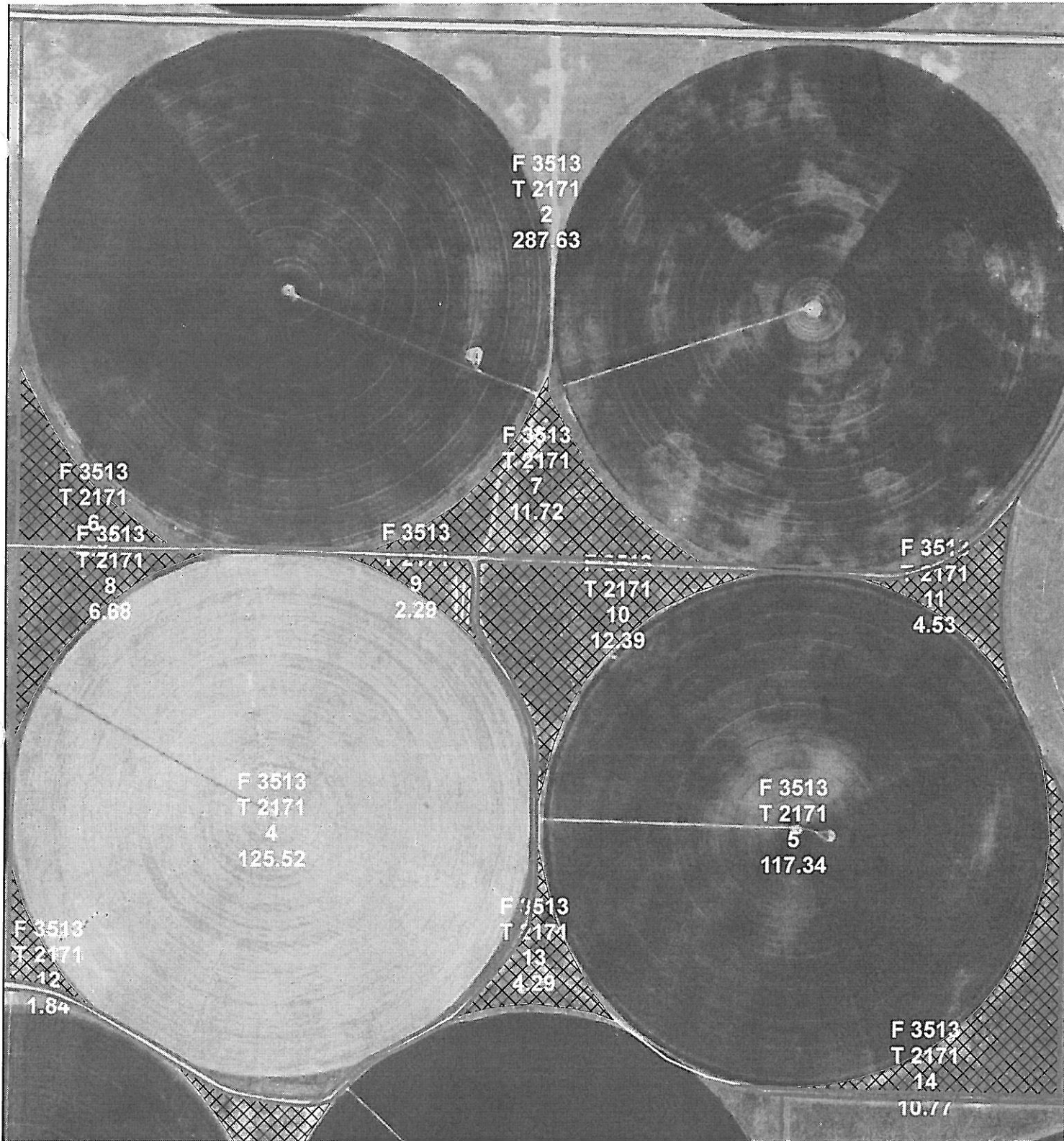
PLSS: 1_26_30
Farm: 3513
Tract: 2171

Gray County, KS

1:9,708



Disclaimer: Wetland identifiers do not represent the size, shape or specific determination of the area. Refer to your original dermination (CPA-026 and attached maps) for exact wetland boundaries and determinations, or contact NRCS.



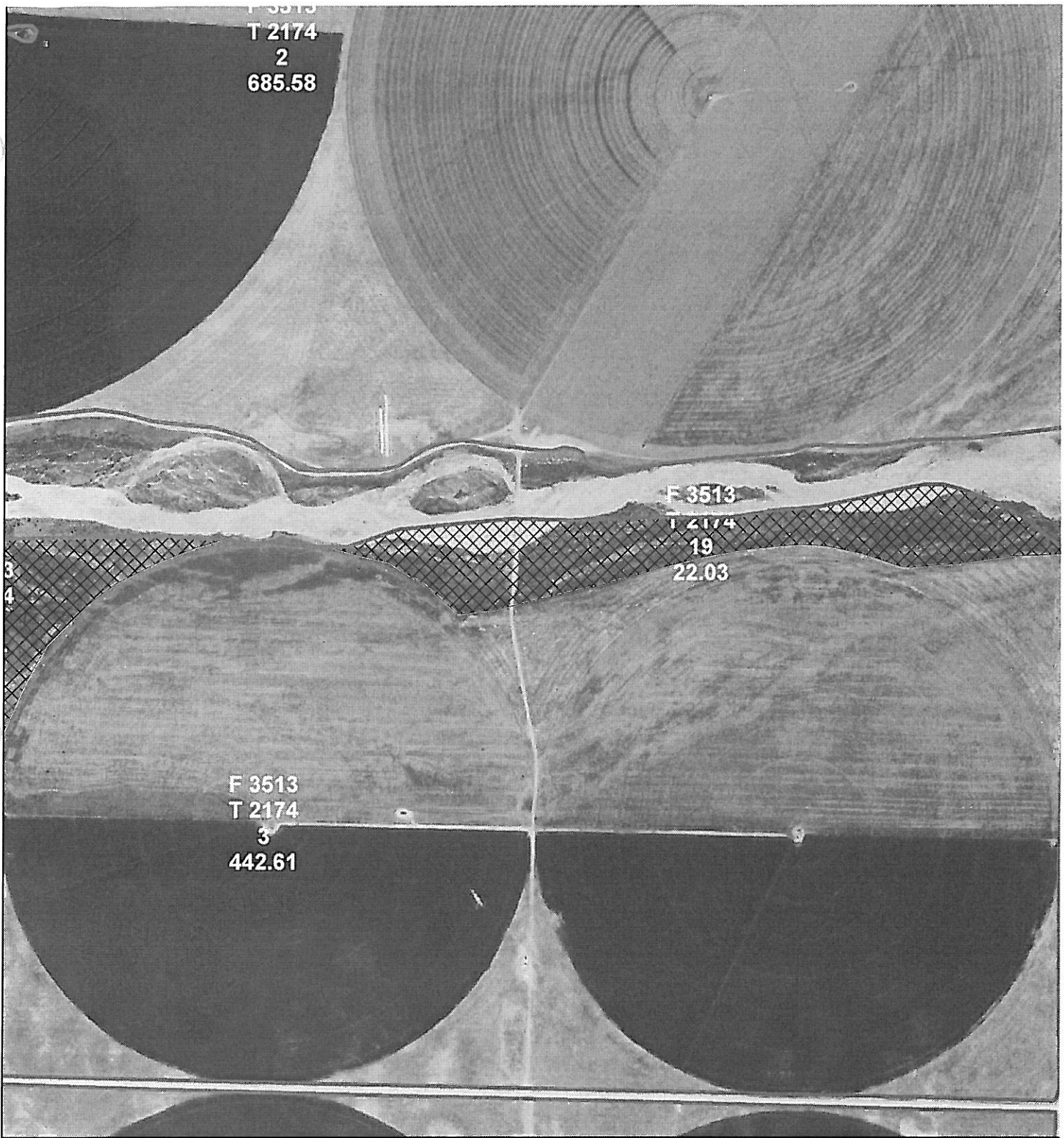
United States Department of Agriculture
Farm Service Agency

July 27, 2010

PLSS: 31_25_29 **Gray County, KS**
Farm: 3513
Tract: 2171 1:8,245



Disclaimer: Wetland identifiers do not represent the size, shape or specific determination of the area. Refer to your original dermination (CPA-026 and attached maps) for exact wetland boundaries and determinations, or contact NRCS.



United States Department of Agriculture
 Farm Service Agency

July 27, 2010

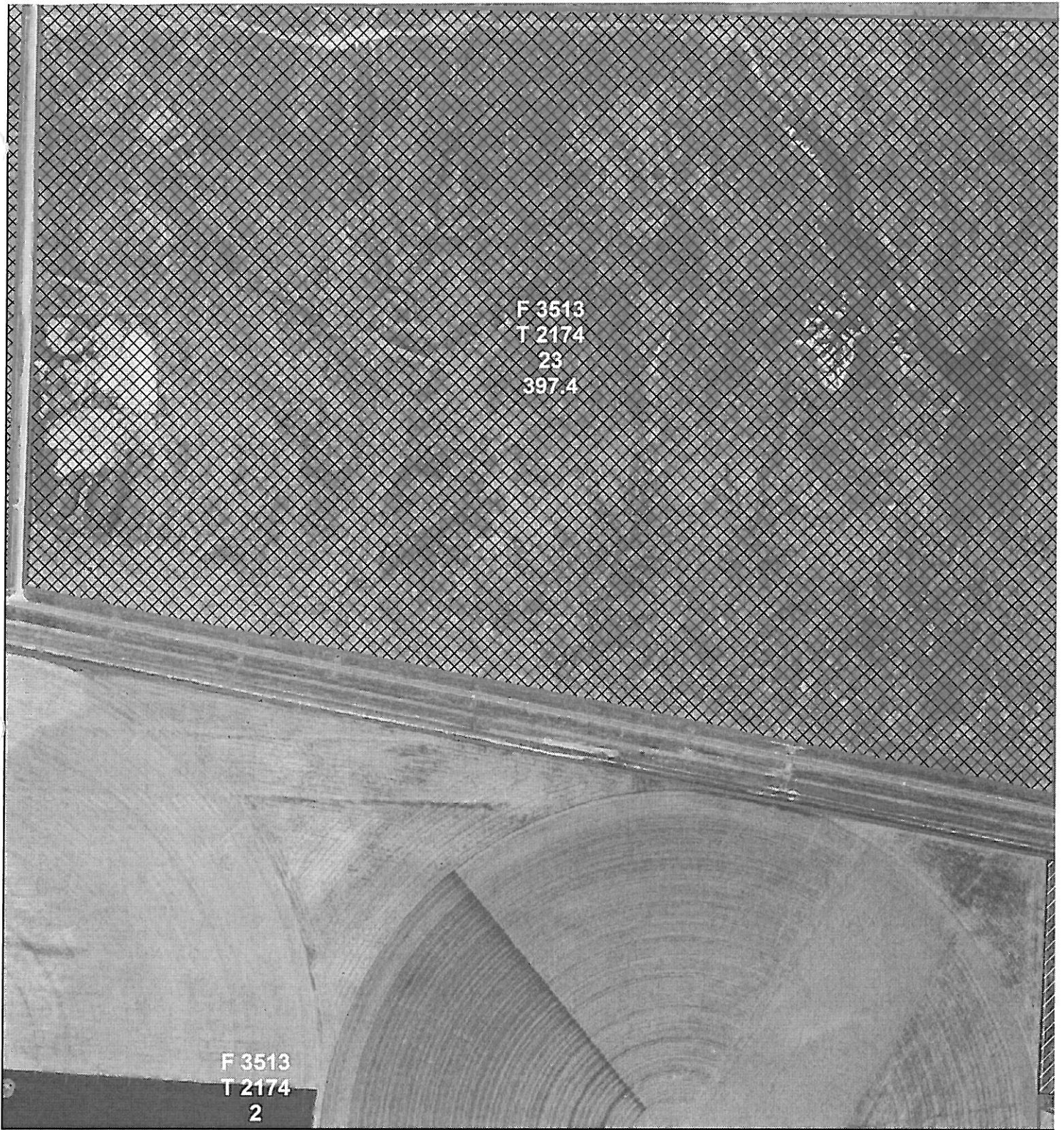
PLSS: 30_25_29
 Farm: 3513
 Tract: 2174

Gray County, KS

1:8,098



Disclaimer: Wetland identifiers do not represent the size, shape or specific determination of the area.
 Refer to your original dermination (CPA-026 and attached maps) for exact wetland
 boundaries and determinations, or contact NRCS.



United States Department of Agriculture
Farm Service Agency

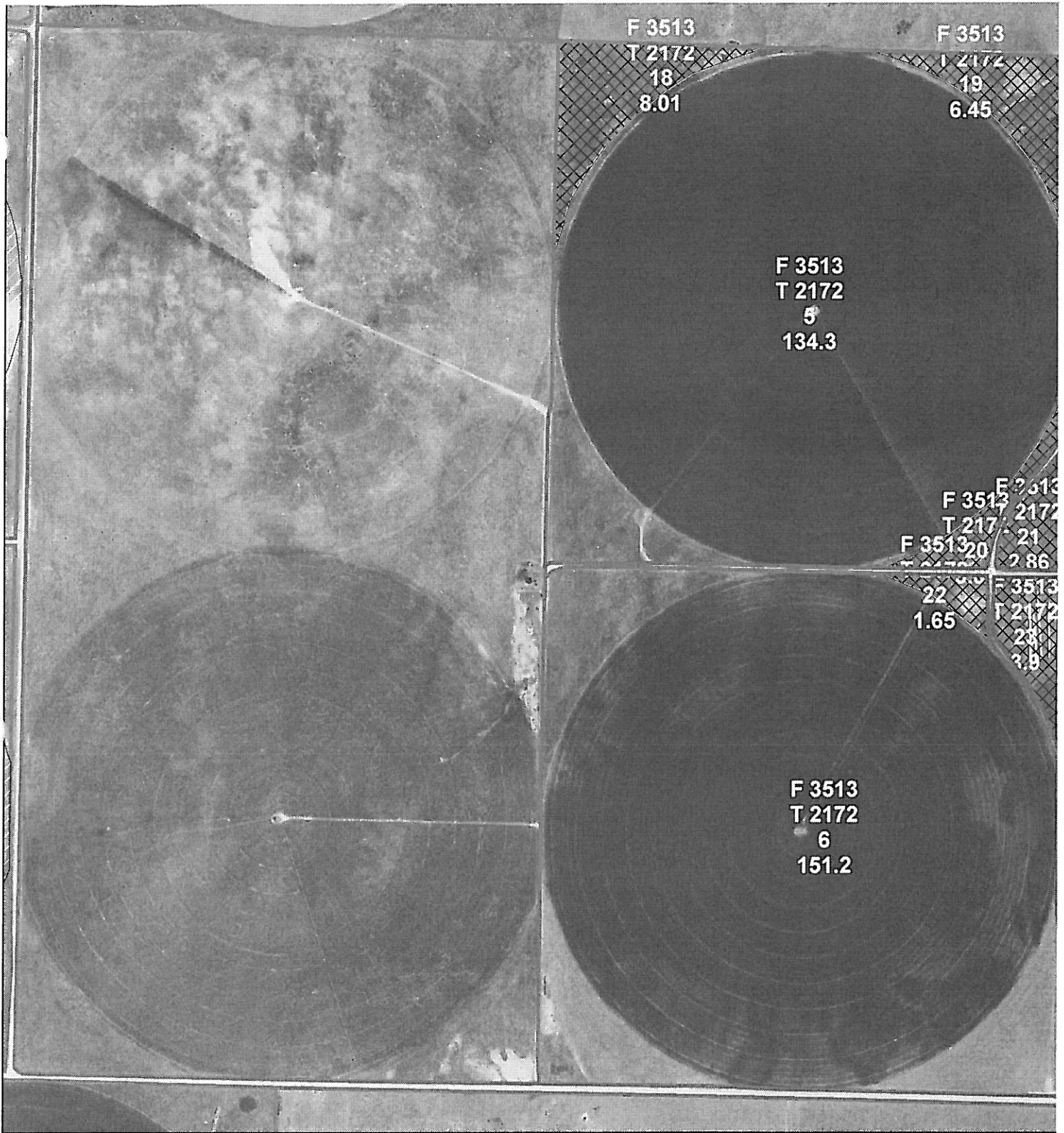
July 27, 2010

PLSS: 19_25_29 **Gray County, KS**
Farm: 3513
Tract: 2174

1:8,156



Disclaimer: Wetland identifiers do not represent the size, shape or specific determination of the area.
Refer to your original determination (CPA-026 and attached maps) for exact wetland boundaries and determinations, or contact NRCS.



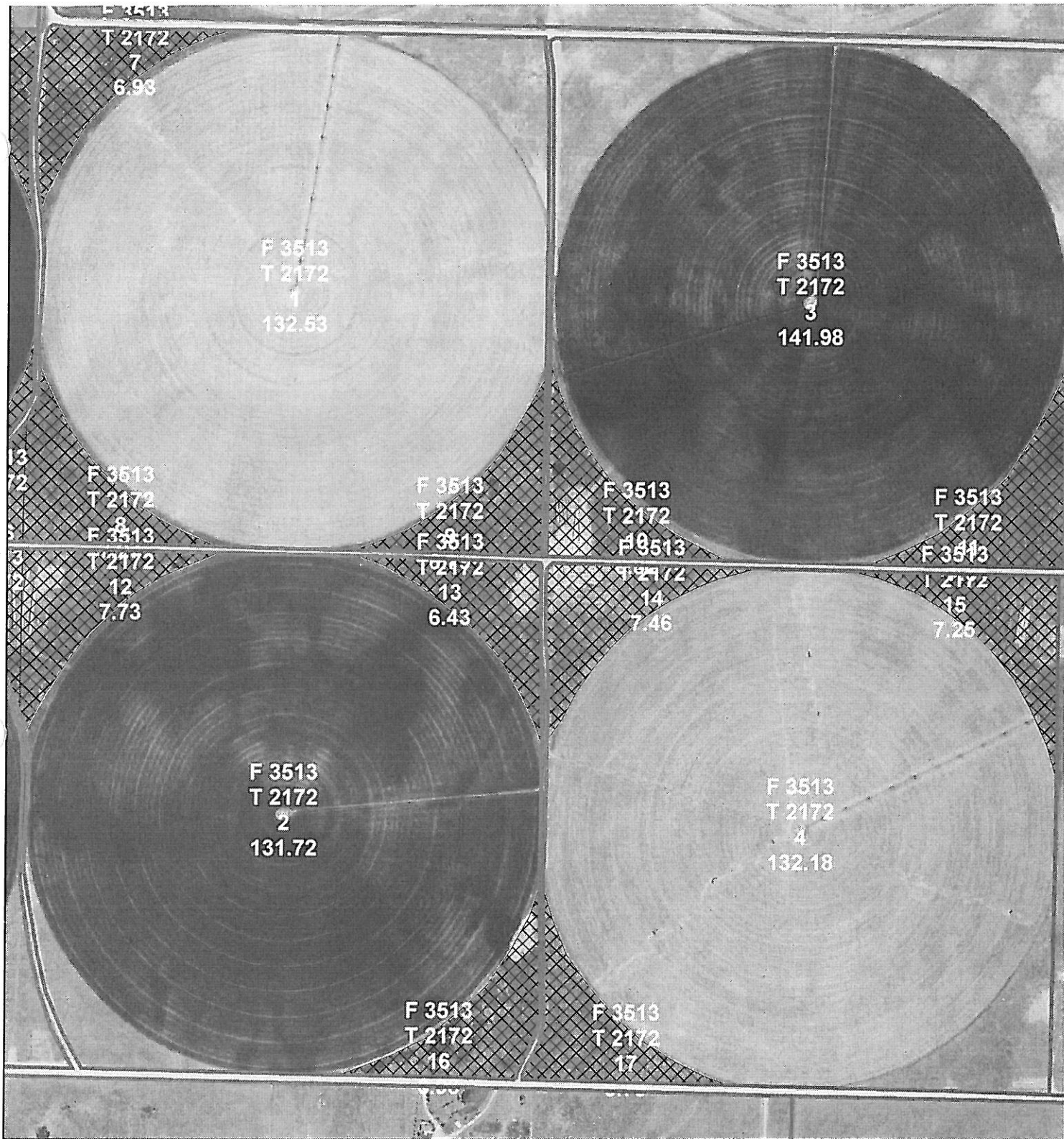
United States Department of Agriculture
Farm Service Agency

July 27, 2010

PLSS: 34_25_30 **Gray County, KS**
Farm: 3513
Tract: 2172 1:8,308



Disclaimer: Wetland identifiers do not represent the size, shape or specific determination of the area. Refer to your original determination (CPA-026 and attached maps) for exact wetland boundaries and determinations, or contact NRCS.



United States Department of Agriculture
Farm Service Agency

July 27, 2010

PLSS: 35_25_30 **Gray County, KS**
Farm: 3513
Tract: 2172

1:8,353



Disclaimer: Wetland identifiers do not represent the size, shape or specific determination of the area. Refer to your original dermination (CPA-026 and attached maps) for exact wetland boundaries and determinations, or contact NRCS.



United States Department of Agriculture
Farm Service Agency

July 27, 2010

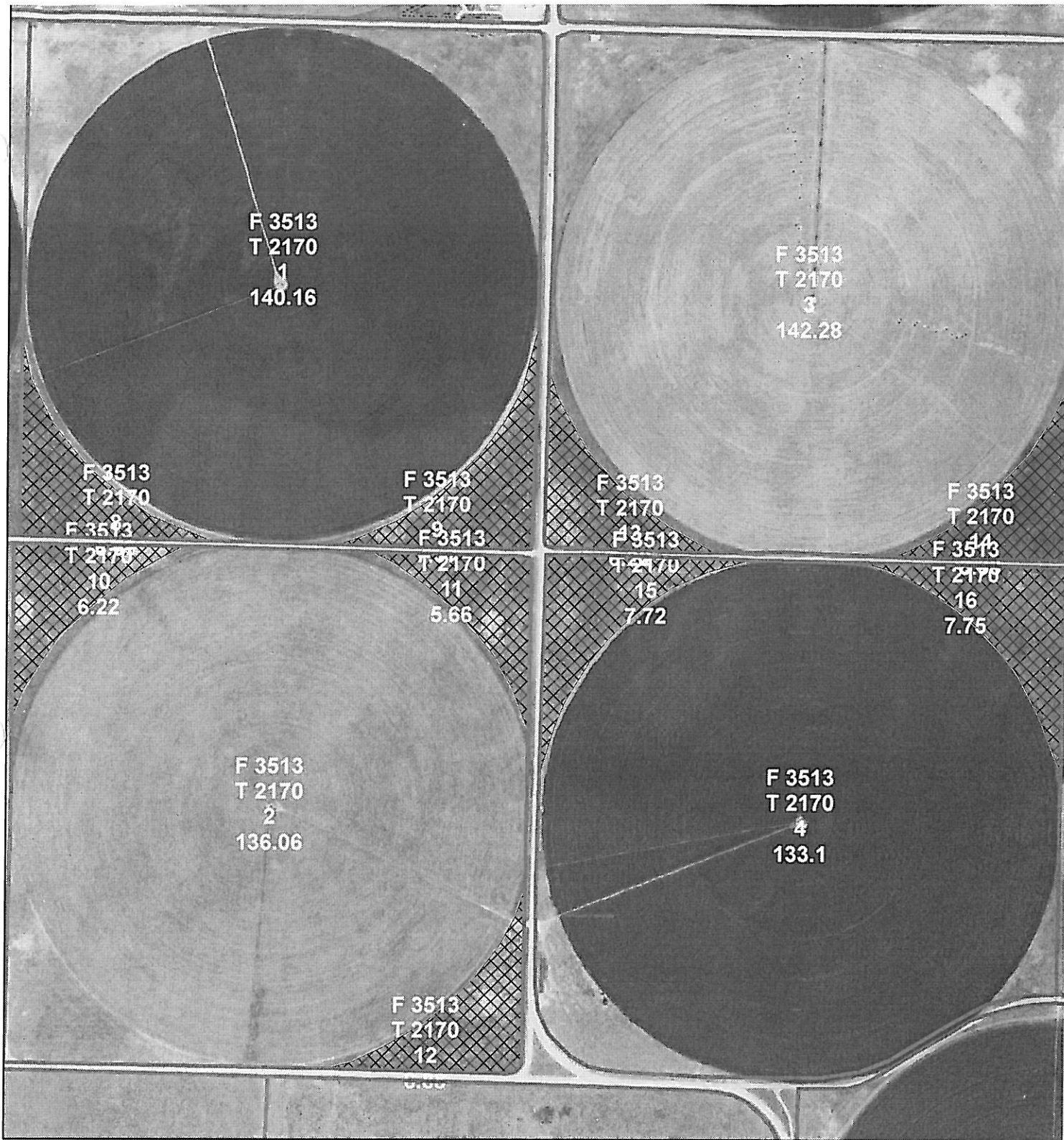
PLSS: 26_25_30
Farm: 3513
Tract: 2174

Gray County, KS

1:8,307



Disclaimer: Wetland identifiers do not represent the size, shape or specific determination of the area. Refer to your original determination (CPA-026 and attached maps) for exact wetland boundaries and determinations, or contact NRCS.



United States Department of Agriculture
Farm Service Agency

July 27, 2010

PLSS: 36_25_30 **Gray County, KS**
Farm: 3513
Tract: 2170 1:8,336



Disclaimer: Wetland identifiers do not represent the size, shape or specific determination of the area. Refer to your original determination (CPA-026 and attached maps) for exact wetland boundaries and determinations, or contact NRCS.



United States Department of Agriculture
Farm Service Agency

July 27, 2010

PLSS: 25_25_30
Farm: 3513
Tract: 2174

Gray County, KS

1:8,245



Disclaimer: Wetland identifiers do not represent the size, shape or specific determination of the area. Refer to your original determination (CPA-026 and attached maps) for exact wetland boundaries and determinations, or contact NRCS.

