

# FSA Information

## Tracts 25-26

**\* There is an additional 80 acres in this contract that is not in the auction because the 80 acres is rented.**







Kansas  
 Gray  
 Report ID: FSA-156EZ

U.S. Department of Agriculture  
 Farm Service Agency  
 Abbreviated 156 Farm Record

FARM: 3512  
 Prepared: 7/26/10 11:39 AM  
 Crop Year: 2010  
 Page: 1 of 1

Operator Name: RENICK FARMS  
 Farm Description: DIV OF 2205  
 Recon Number:

Farms Associated with Operator:  
 3057, 3353, 3405, 3513

Other Producers Associated with Farm:  
 None

CRP Contract Number(s): None

Farmland	Cropland	DCP Cropland	WBP	WRP/EWP	CRP Cropland	GRP	Farm Status	Number of Tracts
555.0	461.7	461.7	0.0	0.0	0.0	0.0	Active	1
State Conservation	Other Conservation	Effective DCP Cropland	Double Cropped	NAP	MPL/FWP		FAV/WR History	ACRE Election
0.0	0.0	461.7	0.0	0.0	0.0		N	None

Crop	Base Acreage	CRP Reduction	CRP Pending	Direct Yield	CC Yield	CCC-505 CRP Reduction
WHEAT	217.6	0.0	0.0	42	42	0.0
CORN	84.0	0.0	0.0	122	122	0.0
GRAIN SORGHUM	88.3	0.0	0.0	92	92	0.0
<b>Total Base Acres:</b>	<b>389.9</b>					

Tract Number: 1333499 Identifier W1/2 & NE1/4 & N1/2 SE1/4 20 26 29

BIA Range Unit Number:

HEL Status: HEL: conservation system is being actively applied

Wetland Status: Wetland determinations not complete

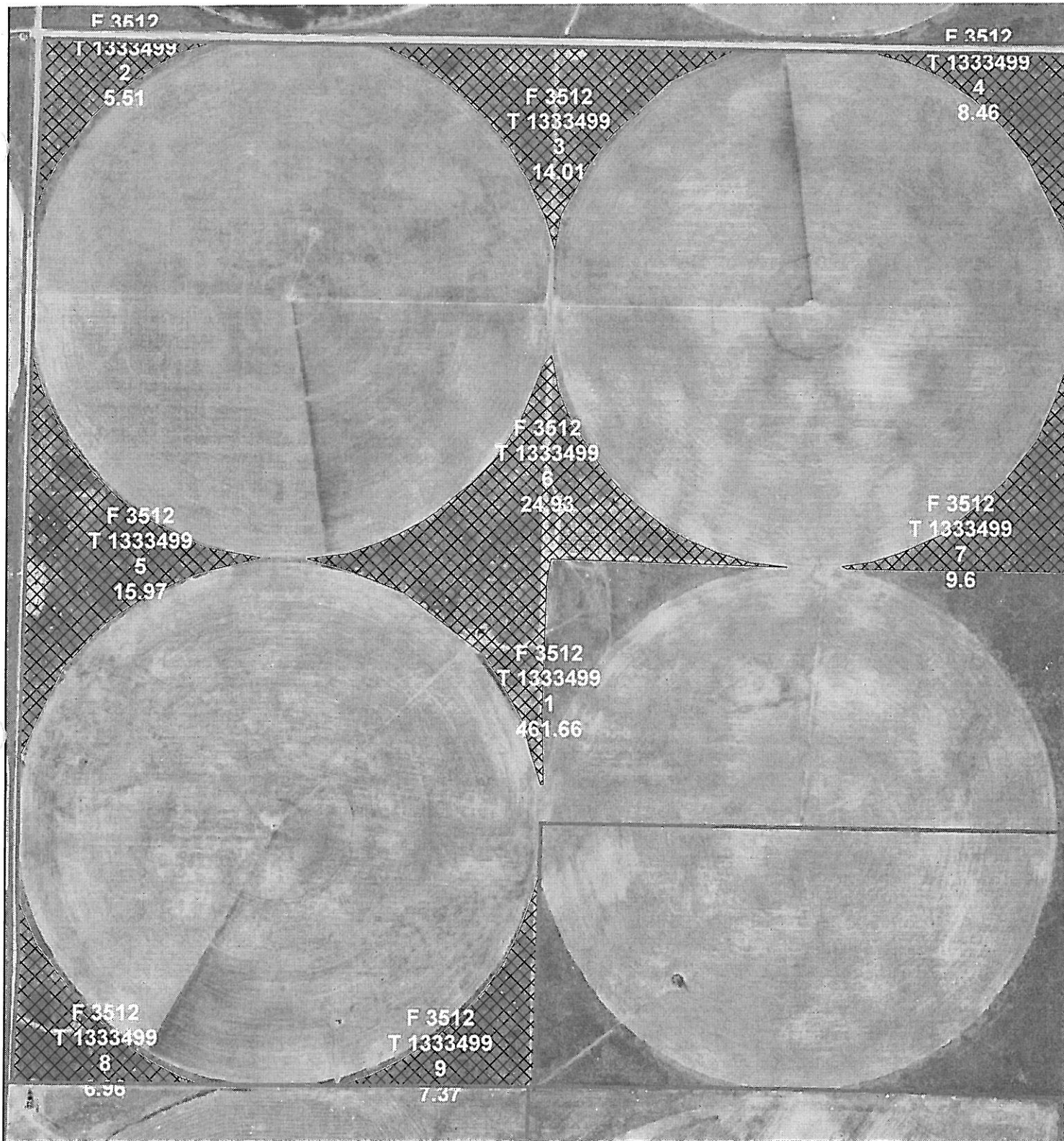
WL Violations: None

FAV/WR History  
 N

Farmland	Cropland	DCP Cropland	WBP	WRP/EWP	CRP Cropland	GRP
555.0	461.7	461.7	0.0	0.0	0.0	0.0
State Conservation	Other Conservation	Effective DCP Cropland	Double Cropped	NAP	MPL/FWP	
0.0	0.0	461.7	0.0	0.0	0.0	

Owners:	Crop	Base Acreage	Direct Yield	CC Yield	CRP Reduction	CRP Pending	CRP Yield	CCC-505 CRP Reduction
	WHEAT	217.6	42	42	0.0	0.0	0	0.0
	CORN	84.0	122	122	0.0	0.0	0	0.0
	GRAIN SORGHUM	88.3	92	92	0.0	0.0	0	0.0
	<b>Total Base Acres:</b>	<b>389.9</b>						
RENICK FARMS								





United States Department of Agriculture  
Farm Service Agency

July 27, 2010

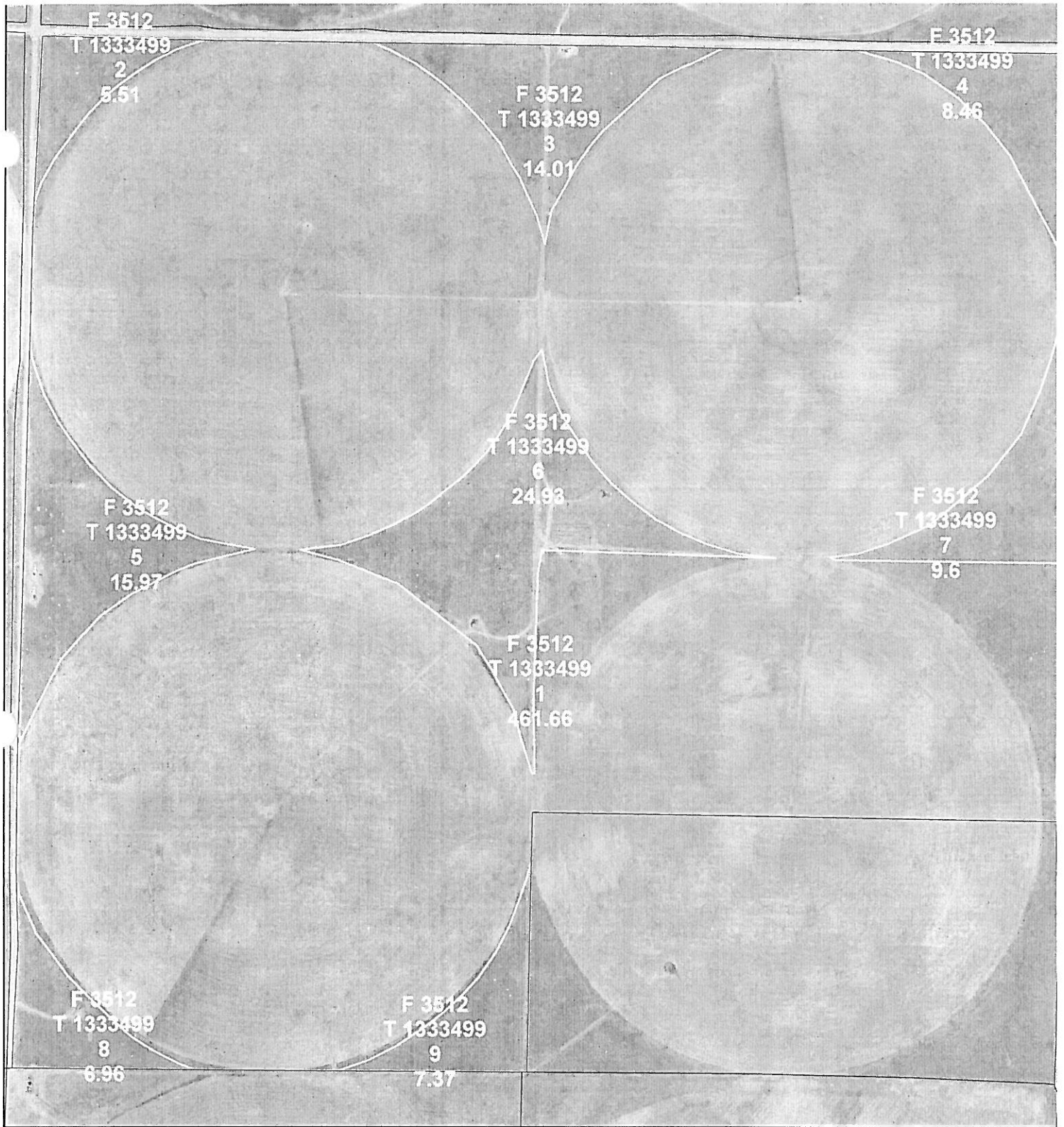
PLSS: 20\_26\_29 **Gray County, KS**  
Farm: 3512  
Tract: 1333499 1:8,379



Disclaimer: Wetland identifiers do not represent the size, shape or specific determination of the area. Refer to your original dermination (CPA-026 and attached maps) for exact wetland boundaries and determinations, or contact NRCS.







United States Department of Agriculture  
Farm Service Agency

July 26, 2010

PLSS: 20\_26\_29 **Gray County, KS**

Farm: 3512

Tract: 1333499

1:8,379



Disclaimer: Wetland identifiers do not represent the size, shape or specific determination of the area. Refer to your original dermination (CPA-026 and attached maps) for exact wetland boundaries and determinations, or contact NRCS.



State: Kansas  
 County: Gray  
 County Office: Gray County Farm Service Agency

U.S. Department of Agriculture  
 Farm Service Agency  
 2010-DCP CCC-509B Worksheet

Crop	Basic Payment		Direct CC		Payment		Producer Name	Type	Share %	Direct Annual Payment
	Acres	Acres	Yield	Yield	Rate	Rate				
<b>Farm Number: 3512</b>										
Corn	84.0	70.0	122	122	0.28	RENICK FARMS	OO	100%	\$2,391	
Grain Sorghum	88.3	73.6	92	92	0.35	RENICK FARMS	OO	100%	\$2,370	
Wheat	217.6	181.3	42	42	0.52	RENICK FARMS	OO	100%	\$3,960	
Total:									\$8,721	

Apr 13 14:42:27 CDT 2010

**Disclaimer:**

The direct payment amounts reflected on this statement are based on 2010-DCP payment rates. The amounts may vary due to changes in payment acres, payment yields, producer eligibility, or producer shares. The distribution of the form does not in any way obligate CCC to disburse the payment amounts reflected.

**Note:** Payment amounts will be calculated by multiplying payment acres, payment yields, share, permitted/AGI share, cropland factor and the payment rate. The payment amounts reflected on this statement do not take into account the permitted/AGI share or cropland factors. Background information can be obtained from any FSA county office.



State: Kansas  
 County: Gray  
 County Office: Gray County Farm Service Agency  
 U.S. Department of Agriculture  
 Farm Service Agency  
 2010-DCP CCC-509B Worksheet

Crop	Base Acres	Payment Acres	Direct Yield	CC Yield	Payment Rate	Producer Name	Type	Share %	Direct Annual Payment
Corn	84.0	70.0	122	122	0.28	RENICK FARMS	OO	100%	\$2,391
Grain Sorghum	88.3	73.6	92	92	0.35	RENICK FARMS	OO	100%	\$2,370
Wheat	217.6	181.3	42	42	0.52	RENICK FARMS	OO	100%	\$3,960
Total:									\$8,721

Farm Number: 3512

Tue Apr 13 14:42:27 CDT 2010

Disclaimer:

The direct payment amounts reflected on this statement are based on 2010-DCP payment rates. The amounts may vary due to changes in payment acres, payment yields, producer eligibility, or producer shares.

The distribution of the form does not in any way obligate CCC to disburse the payment amounts reflected.

**Note:** Payment amounts will be calculated by multiplying payment acres, payment yields, share, permitted/AGI share, cropland factor and the payment rate. The payment amounts reflected on this statement do not take into account the permitted/AGI share or cropland factors. Background information can be obtained from any FSA county office.



**CONSERVATION PROGRAM CONTRACT**

<b>Participant:</b> RENICK FARMS	<b>Program and Contract Number:</b> EQIP 2008 746215090BY
<b>County and State:</b> GRAY County, KS	<b>Subaccount:</b> 09 Water Quantity QRA - GMD 3
<b>Watershed:</b> City of Ingalls-Arkansas River	This agreement is effective on the date signed by the Natural Resources Conservation Service approving official and extends through <b>9/30/2013</b>

- The undersigned participants enter into this contract with the Natural Resources Conservation Service (NRCS) to implement and or maintain specific conservation practices, as set forth in the Conservation Plan or Schedule of Operations (NRCS-CPA-1155), on the property as identified on the plan map. In consideration for the implementation and or maintenance of the practices, the NRCS will make payments to the participant(s) in the amount(s) described in the Schedule of Operations as outlined in the appendix.
- This agreement is comprised of this Conservation Program Contract form NRCS-CPA-1202, NRCS-CPA-1202 Appendix; NRCS-CPA-1155 Conservation Plan or Schedule of Operations and plan map which are fully incorporated by reference into this document and are binding upon the participant(s). The NRCS-CPA-1155 may be modified (NRCS-CPA-1156) upon agreement of NRCS and the participant and becomes a part of the contract when signed by the NRCS approving official.
- The participant(s) agree: A) to implement and maintain conservation practices identified on the plan map in compliance with the plan or schedule of operations (NRCS-CPA-1155) and in accordance with the standards, specifications, and other special program criteria obtained from the local field office of the NRCS; B) to forfeit further payments under this agreement and refund the United States, in amounts determined by NRCS, payments received hereunder upon NRCS determination that participant(s) have violated the material terms of this agreement or accept such payment adjustments as NRCS may deem appropriate if NRCS decides that the participant's violation does not warrant termination of the agreement; and C) to forfeit all rights to further payments under the agreement and refund to the United States, in amounts determined by NRCS, payments received hereunder if the subject land is transferred to a non-participant during the term of this agreement, unless the third party agrees to assume this agreement, and the NRCS consents to the modification.

**4. CONTRACT PARTICIPANTS**

<b>Name, Address, Telephone</b> RENICK FARMS 10502 6 RD INGALLS , KS 67853	<b>SSN or TAX ID if applicable</b> *****2460
<b>Signature</b>	<b>Payment Shares</b> 100.00%
<b>Date</b>	
<b>Signature required for modifications</b> <input checked="" type="checkbox"/> Yes <input type="checkbox"/> No	<b>Signature acceptable for payments</b> <input checked="" type="checkbox"/> Yes <input type="checkbox"/> No

**5. CONTRACT OBLIGATIONS**

2010	2011	2012								Total
\$74,100	\$74,100	\$74,100								\$222,300
										\$222,300

**6. NRCS APPROVING OFFICIALS**

<b>Application Approval</b>  Joel A Willhoft USDA electronic signature; manual signature not required.	<b>Contract Obligation</b>  Thomas W Christensen USDA electronic signature; manual signature not required.
<b>Date:</b> 6/19/2009	<b>Date:</b> 7/2/2009





### CONSERVATION PROGRAM CONTRACT

<b>Participant:</b> RENICK FARMS	<b>Program and Contract Number:</b> EQIP 2008 746215090BY
<b>County and State:</b> GRAY County, KS	<b>Subaccount:</b> 09 Water Quantity QRA - GMD 3
<b>Watershed:</b> City of Ingalls-Arkansas River	This agreement is effective on the date signed by the Natural Resources Conservation Service approving official and extends through <b>9/30/2013</b>

- The undersigned participants enter into this contract with the Natural Resources Conservation Service (NRCS) to implement and or maintain specific conservation practices, as set forth in the Conservation Plan or Schedule of Operations (NRCS-CPA-1155), on the property as identified on the plan map. In consideration for the implementation and or maintenance of the practices, the NRCS will make payments to the participant(s) in the amount(s) described in the Schedule of Operations as outlined in the appendix.
- This agreement is comprised of this Conservation Program Contract form NRCS-CPA-1202, NRCS-CPA-1202 Appendix; NRCS-CPA-1155 Conservation Plan or Schedule of Operations and plan map which are fully incorporated by reference into this document and are binding upon the participant(s). The NRCS-CPA-1155 may be modified (NRCS-CPA-1156) upon agreement of NRCS and the participant and becomes a part of the contract when signed by the NRCS approving official.
- The participant(s) agree: A) to implement and maintain conservation practices identified on the plan map in compliance with the plan or schedule of operations (NRCS-CPA-1155) and in accordance with the standards, specifications, and other special program criteria obtained from the local field office of the NRCS; B) to forfeit further payments under this agreement and refund the United States, in amounts determined by NRCS, payments received hereunder upon NRCS determination that participant(s) have violated the material terms of this agreement or accept such payment adjustments as NRCS may deem appropriate if NRCS decides that the participant's violation does not warrant termination of the agreement; and C) to forfeit all rights to further payments under the agreement and refund to the United States, in amounts determined by NRCS, payments received hereunder if the subject land is transferred to a non-participant during the term of this agreement, unless the third party agrees to assume this agreement, and the NRCS consents to the modification.

#### 4. CONTRACT PARTICIPANTS

<b>Name, Address, Telephone</b> RENICK FARMS 10502 6 RD INGALLS, KS 67853	<b>SSN or TAX ID if applicable</b> *****2460
<b>Signature</b> <i>Renick Farms By: Michael R. Renick</i>	<b>Payment Shares</b> 100.00%
<b>Date</b> 6-19-09	
<b>Signature required for modifications</b> <input checked="" type="checkbox"/> Yes <input type="checkbox"/> No	<b>Signature acceptable for payments</b> <input checked="" type="checkbox"/> Yes <input type="checkbox"/> No

#### 5. CONTRACT OBLIGATIONS

2010	2011	2012							Total
\$74,100	\$74,100	\$74,100							\$222,300
									\$222,300

#### 6. NRCS APPROVING OFFICIALS

<b>Application Approval</b>  Joel A Willhoft USDA electronic signature; manual signature not required.  Date: 6/19/2009	<b>Contract Obligation</b>  Date:
--	---



## CONSERVATION PROGRAM CONTRACT

<b>Participant:</b> RENICK FARMS	<b>Program and Contract Number:</b> EQIP 2008 746215090BY
-------------------------------------	--

### OMB DISCLOSURE STATEMENT

According to the Paper Work Reduction Act of 1995, an agency may not conduct or sponsor, and a person is not required to respond to a collection of information unless it displays a valid OMB control number. The valid OMB control number for this information collection is 0578-0013. The time required to complete this information collection is estimated to average 0.69 hours per response, including the time for reviewing instructions, searching existing data sources, gathering and maintaining the data needed, and completing and reviewing the collection of information.

### PRIVACY ACT STATEMENT

The above statements are made in accordance with the Privacy Act of 1974 (U.S.C. 522a). Furnishing this information is voluntary; however, failure to furnish correct, complete information will result in the withholding or withdrawal of such technical or financial assistance. The information may be furnished to other USDA agencies, the Internal Revenue Service, the Department of Justice, or other state or federal law enforcement agencies, or in response to orders of a court, magistrate, or administrative tribunal.

### NONDISCRIMINATION STATEMENT

The United States Department of Agriculture (USDA) prohibits discrimination in all its programs and activities on the basis of race, color, national origin, gender, religion, age, disability, political beliefs, sexual orientation, or marital or family status. (Not all prohibited bases apply to all programs.) Persons with disabilities who require alternative means for communication of program information (Braille, large print, audiotape, etc.) should contact USDA's TARGET Center at (202) 720-2600 (voice and TDD). To file a complaint of discrimination, write USDA, Director, Office of Civil Rights, Room 326-W, Whitten Building, 1400 Independence Avenue, S.W., Washington, D.C. 20250-9410 or call (202) 720-5964.



U. S. DEPARTMENT OF AGRICULTURE  
Commodity Credit Corporation

**APPENDIX TO FORM NRCS-CPA-1202  
CONSERVATION PROGRAM CONTRACT**

**For  
Environmental Quality Incentives Program (EQIP)**

**1 PROGRAM ELIGIBILITY REQUIREMENTS**

- A** The Participant must complete and file Form AD-1026 (Highly Erodible Land Conservation and Wetland Conservation Certification) and meet the requirements set forth therein, in accordance with the Food Security Act of 1985, as amended. By signing this Conservation Program Contract (Contract), the Participant certifies that the Participant has completed and filed the AD-1026 and meets the requirements set forth in the Highly Erodible Land Conservation-Wetland Conservation (HELC-WC) provisions. AMA participants are not required to meet the HELC-WC provisions.
- B** The Participant must meet the requirements of, complete and file Form CCC-926 (Payment Eligibility Average Adjusted Gross Income Certification). By signing this Contract, the Participant certifies that the Participant has met the requirements of, completed and filed Form CCC-926. A person or legal entity shall not be eligible to receive any benefit during a crop, fiscal, or program year, as appropriate, if the average adjusted gross non-farm income of the person or legal entity exceeds \$1,000,000, unless not less than 66.66 percent of the average adjusted gross income of the person or legal entity is average adjusted gross farm income. The amount of any payment or benefit shall be reduced by an amount that is commensurate with the direct and indirect ownership interest in the entity of each person who has an average adjusted gross income, average adjusted gross farm income, or average adjusted gross non-farm income in excess of the applicable limitation specified.
- C** The Participant must complete and file Form CCC-501A (Member's Information), or its equivalent, if the Participant represents a business classified as an entity or joint operation by the U.S. Department of Agriculture (USDA) under 7 CFR part 1400.
- D** The Participant must have control of the land for this Contract period. By signing this Contract, the Participant certifies that the Participant will control the land subject to this Contract for the term of this Contract and shall, upon request, provide evidence to Commodity Credit Corporation (CCC) demonstrating that such Participant will control the land for that period. Where applicable, the Bureau of Indian Affairs and the Natural Resources Conservation Service (NRCS) will determine Tribal land eligibility.
- E** The Participant shall not be eligible for Contract payments for any of the following: (1) practices that are required to meet HELC and WC compliance requirements found in 7 CFR part 12 (not applicable to AMA participant); (2) practices that are included in maintenance agreements



(with financial reimbursements for maintenance) that existed prior to participation; (3) a non-land based structure that is not integral to a land based practice; and (4) practices that were applied with financial assistance through any other USDA conservation program.

- F** Land otherwise eligible for the covered conservation programs shall not be eligible if the land is subject to a deed or other restriction prohibiting the application of the conservation plan and associated practices, or where a benefit has or will be obtained from a Federal, or State agency (including political subdivisions and entities thereof) in return for the Participant's agreement not to implement the conservation plan and associated practices on the land during the same time as the land would be enrolled in this Contract. By applying for the program Contract, the Participant certifies as a condition for payment that no such restrictions apply to the subject land. In regard to WHIP, NRCS shall not provide cost-share assistance for conservation practices or activities on public land.
- G** The Participant is responsible for obtaining the authorities, permits, easements, or other approvals necessary for the implementation, operation, and maintenance of the conservation practices in accordance with applicable laws and regulations. A Participant must comply with all laws and is responsible for all effects or actions resulting from the Participant's performance under this Contract.

## **2 OFFERS FROM APPLICANTS**

Form NRCS-CPA-1200, Conservation Program Contract Application, and this NRCS-CPA-1202-CPC (Appendix) represent a request to enter into the program under the terms specified in this Contract.


## **3 AGREEMENT**

The Participant agrees to:

- (1) Place eligible land into the program for the period of time as specified on Form NRCS-CPA-1202 beginning on the date this Contract is executed by CCC;
- (2) Not start any financially assisted practice or activity or engage the reimbursable services of a certified Technical Service Provider (TSP) before this Contract is executed by CCC unless a waiver is approved by NRCS. The Participant may request, in writing, a waiver of this requirement for financially assisted practices by the NRCS State Conservationist (STC), or designee;
- (3) Secure funding for the desired services of a TSP through contract development or contract modification with NRCS before engaging the services of a TSP;
- (4) Apply or commence a financially assisted practice within the first 12 months from the date this Contract is signed by NRCS.





- (5) Complete all practices at least one year before the expiration date of the Contract;
- (6) Establish conservation practices or activities described in this Contract as scheduled, to operate and maintain these practices or activities for the intended purpose and life span identified in this Contract, and to comply with the terms and conditions of this Contract and all applicable Federal, State, Tribal, and local laws. In cases where the land is transferred to new ownership during the contract period, the Participant must also ensure these responsibilities are transferred to subsequent owners;
-  (7) Notify NRCS within 60 days of the transfer of interest to an eligible transferee who accepts the contract's terms and conditions by completing the Transfer Agreement, Form NRCS-CPA-152, or the contract will be terminated;
- (8) Share responsibility for ensuring that Form NRCS-CPA-1155, Conservation Plan or Schedule of Operations, is accurate and complete. NRCS has no authority to compensate participants for practices and/or activities that are not in the Contract at the time of obligation;
- (9) Not undertake any action on land under the Participant's control which tends to defeat the purposes of the program, as determined by CCC;
- (10) Discontinue work in the general area of the site and notify NRCS immediately if during the construction of any practice a previously unidentified endangered species, archeological, or historical site is encountered;
- (11) Provide receipts, as necessary, as proof of payments, and to maintain proof of payment documentation for three (3) years after the end of the Federal fiscal year in which the practice or activity was completed, and to present this documentation to CCC within 30 days if selected for administrative compliance check;
- (12) Allow access to the land under Contract to the CCC representative for monitoring progress on this Contract;
- (13) Supply records and information as required by CCC to determine compliance with the Contract and requirements of the program within 30 days of request;
- (14) Develop and implement all practices identified in a comprehensive nutrient management plan in those contracts that include a waste storage or treatment facility; develop and implement all practices identified in a forest management plan; and develop and carry-out an organic system plan or those conservation practices that are consistent with an organic system plan for contracts funded under EQIP, 16 U.S.C. 3839; and
- (15) Accept applicable program payment limits: The Participant, defined as a person, joint operation, or legal entity hereby agrees that the total amount of all payments received in any of the covered programs do not exceed the following:



- **AMA** - payments received by a Participant from all AMA sources (NRCS, RMA, and AMS or any legal entity acting on behalf of these agencies), shall not exceed a total of **\$50,000 per Participant for any fiscal year**;
- **WHIP** - payments made to a Participant directly or indirectly, under the program may not exceed, in the aggregate, **\$50,000 per fiscal year**;
- **EQIP** - payments made to a Participant in fiscal years **2009 – 2014** may not exceed an aggregate of **\$300,000**, directly or indirectly, for all contracts, including prior year contracts during this six-year period. (Authorized waivers granted to this payment limit shall not exceed \$450,000 during any six-year period.); and
- **EQIP-Organic** - payments for conservation practices related to organic production to a Participant directly or indirectly, may not exceed in aggregate **\$20,000 per year or \$80,000 during any six-year period**.

Payments received in excess of these limits are subject to refund.

#### 4 CONSERVATION PLAN

By signing the Contract, the Participant agrees:

- (1) That the NRCS-CPA-1155, Conservation Plan or Schedule of Operations is hereby incorporated as a part of the Contract; and
- (2) To implement and maintain the practices and activities as identified and scheduled on Form NRCS-CPA-1155 and in compliance with Paragraph 6 of this Appendix—Operation and Maintenance of Conservation Practices.

#### 5 PAYMENTS

- A** Subject to the availability of funds, CCC will make payments at the rate and applied amount specified in this Contract after a determination by CCC that an eligible conservation practice or activity has been established in compliance with the conservation plan, and in accordance with appropriate standards and specifications. In order to receive payments, the Participant, upon technical certification of the completed practice or activity, must execute and file with CCC a Form NRCS-CPA-1245, Practice Approval and Payment Application, along with any receipts, as necessary.
- B** Payments will be issued based on the unit rate and the applied amount as documented on Form NRCS-CPA-1245. Form NRCS-CPA-1155, Plan/Schedule of Operations and Form NRCS-CPA-1156, Revision of Plan/Schedule of Operations or Modification of a Contract reflect payment rates in effect for the year of Contract obligation. **Subject to the availability of funds**, payments for a practice implemented according to or ahead of schedule **may** be increased to reflect an indexed payment based on the Engineering News Record Construction Cost Index and Prices Paid Index in effect for the year the practice is completed. The indexed payment increase shall not exceed 25% of the payment rate as shown on the Form NRCS-CPA-1155 or Form NRCS-CPA-1156. A conservation practice that requires modification to delay application will not receive the increased payment, but will be paid based on the payment rate applicable to the originally scheduled year.



- C** In order to be reimbursed for technical services approved under this agreement and performed by a certified TSP hired by the Participant, a Participant must execute a request for payment on Form NRCS-CPA-1245. The Participant must also submit to CCC an invoice from the TSP for the work performed, as well as any documentation CCC may require in order to ensure that the technical services were carried out in accordance with NRCS requirements.
- It is the Participant's responsibility to ensure that the technical services obtained from a TSP hired by the Participant meet program requirements. CCC will not reimburse the Participant if the technical services provided by the TSP do not meet the program requirements. If CCC terminates this Contract as provided under Paragraph 11 of this Appendix, CCC may seek refund of any TSP payments made to the Participant.
- D** All payments received as part of a Contract are reported to the United States Internal Revenue Service (IRS). For information related to tax liabilities, consult with a tax accountant or refer to IRS publication 225, Farmers Tax Guide.
- E** Payments will only be issued for practices or activities that meet or exceed the practice standards described in the NRCS Field Office Technical Guide.
- F** Collection of amounts due from a Participant for improper payment or any other reason will follow procedures of the Debt Collection Improvement Act of 1996. NRCS will notify the Participant to identify the reason for the collection and the amount owed. Based on this notification, a bill will be entered into the National Finance Center's IBIL (Internet Billing). Unpaid bills accrue interest beginning 30 days after the billing date at the current value of funds rate published in the Federal Register by the United States Department of Treasury.
- G** Any Participant that will receive financial benefit from the implementation of this Contract must be a signatory on the Contract. Unless signature authority is not granted or assigned on the Contract, any Participant on the Contract may approve payment applications for the Contract.
- H** Any payment that has or will be received through another USDA program or from other sources must be disclosed to the NRCS Approving Official at the time a payment application is filed. NRCS may reduce payments to account for the funds received from other sources.
- I** Historically underserved EQIP participants may receive advance payments up to 30 percent of the amount needed to implement conservation practices for the purpose of purchasing "**immediately needed**" materials and services. Advanced payments will be subject to all terms and conditions including those identified in Paragraph 12 of this Appendix—Recovery of Costs.
- J** Participants are advised that the NRCS Programs Contracting system cannot presently complete a full participant eligibility screening at contract obligation. Payments for practices or activities will not be issued until such time that a completely automated evaluation of the participant eligibility is available. When the automated system is in place participants may receive a reduced payment commensurate to their eligibility, including the possibility of receiving no payment where the participant is determined to be ineligible.



## 6 OPERATION AND MAINTENANCE OF CONSERVATION PRACTICES (Operation and Maintenance Agreement)

The Participant agrees to the operation and maintenance (O&M) of all conservation practices included within this Contract.

These practices shall be operated and maintained for the practice lifespan as listed on Form NRCS-CPA-1155, Conservation Plan or Schedule of Operations, and any subsequent practices resulting from revisions on Form NRCS-CPA-1156, Revision of Plan/Schedule of Operations or Modification of a Contract. This requirement also extends to those conservation practices installed before Contract execution, but included in the Contract to obtain the environmental benefits agreed upon in the ranking process.

- A** The term O&M as used in the Contract shall collectively include:
- **Operation:** The administration, management, and performance of non-maintenance activities necessary to keep a practice safe and functioning as planned;
  - **Maintenance:** The recurring activities necessary to retain or restore a practice in a safe and functioning condition, including, but not limited to, the management of vegetation, the repair or replacement of failed components or conservation practices, the prevention or treatment of deterioration, and the repair of damages caused by vandalism or negligence, but excluding damage caused by a local, state or nationally recognized natural disaster;
  - **Repair:** The actions to return a deteriorated, damaged, abandoned, or failed practice and/or component to an acceptable and functional condition; and
  - **Replacement:** The removal of a practice or component and installation of a similar, functional practice or component.
- B** The Participant is responsible for the O&M activities and acknowledges that these activities may require labor, funds, and management in order to ensure the appropriate program purposes are met.
- C** The Participant O&M responsibilities begin when the practice installation is completed, as determined by NRCS, and shall continue through the end of the practice lifespan.
- D** The Participant acknowledges that the "practice lifespan" is the time period in which the conservation practices are to be used and maintained for their intended purposes as defined by NRCS technical references and documented on either Forms NRCS-CPA-1155 or NRCS-CPA-1156.
- E** Specific O&M requirements for conservation practices covered within this Contract are defined in the conservation practice standard and are documented within the conservation plan narrative, Contract provision, and/or job sheet.
- F** The Participant acknowledges that conservation practices installed before the contract execution, but included in the Contract to obtain the environmental benefits agreed upon within the application ranking process,





must be operated and maintained as specified in the Contract and within this paragraph.

- G** The Participant agrees to the O&M requirements as listed within this Paragraph (6) and failure to carry-out the terms and conditions listed may result in CCC termination of this Contract. (Refer to Paragraph 11 of this Appendix—Contract Termination).

## **7 PROVISIONS RELATING TO TENANTS AND LANDLORDS**

No payment will be approved for the current year if CCC determines that any of the following conditions exist:

- (1) The landlord or operator has not given the tenants that have an interest in the agricultural operation covered by the Contract, or that have a lease that runs through the Contract term at the time of sign-up, an opportunity to participate in the benefits of the program.
- (2) The landlord or operator has adopted any other scheme or device for the purpose of depriving any tenant of any benefits to which such tenant would otherwise be entitled. If any such conditions occur or are discovered after payments have been made, all or any part of the payments, as determined by CCC, must be refunded according to Paragraph 5F of this Appendix and no further payments shall be made.

## **8 MISREPRESENTATION AND SCHEME OR DEVICE**

- A** A Participant who is determined to have erroneously represented any fact affecting a determination with respect to this Contract and the regulations applicable to this Contract, adopted any scheme or device which tends to defeat the purposes of this Contract, or made any fraudulent representation with respect to this Contract, will not be entitled to payments or any other benefits made under this Contract. The Participant must refund to CCC all payments received plus interest. In addition, CCC will terminate the Participant's interest in all program contracts.
- B** CCC will charge interest on monies it determines to be due and owing to CCC under this Contract. Under debt collection procedures, unpaid bills accrue interest beginning 30 days after the billing date. The interest rate will be determined using the current value of funds rate, published annually in the Federal Register by the United States Department of Treasury.
- C** The provisions of Paragraph 8A of this Appendix shall be applicable in addition to any other criminal and civil fraud statutes.

## **9 CHANGES TO TERMS AND CONDITIONS OF THIS CONTRACT**

- A** If any changes to the terms and conditions of this Contract become necessary prior to the date that this Contract is approved on behalf of CCC, CCC will notify, in writing, the Applicant that signed Form NRCS-CPA-1202 of such change and such person(s) will be given 10 days from the date of notification in which to



agree to the revised terms and conditions or to withdraw from this Contract request. The Applicant agrees to notify, in writing, the CCC of an intention to withdraw the program participation request within 10 days from the date of the issuance of such notice and further agrees that failure to notify the CCC will constitute agreement to the revised terms and conditions.

- B** CCC may unilaterally modify this Contract when the installed practice would cause adverse impacts to significant cultural and/or environmental resources without mitigation action.
- C** Subject to the availability of funds, CCC may unilaterally modify this Contract when the amount of payment for a single contract item (practice or activity) increases by not more than five hundred dollars (\$500) as the result of an increase in the number of units performed (quantity variation) by the Participant.
- D** The Participant and CCC may modify this Contract by mutual agreement when:
- (1) Both the Participant and the appropriate approving authority (STC or designated conservationist) agree to this modification;
  - (2) At the request of the Participant, and upon approval of CCC, the modification is consistent with the purposes of the program; and
  - (3) A transfer of this Contract occurs, provided CCC approval is obtained, and an eligible transferee accepts all terms and responsibilities under this Contract including operation and maintenance of those practices already installed or to be installed.
- E** The Participant and CCC may modify this Contract by mutual agreement to revise or add to those practices already installed, provided that such revisions or additions are within the general scope of this Contract. If any such changes cause an increase in the cost of performance of any part of the work under the Contract, the authorized CCC official shall make an equitable adjustment in the total contract payment and shall modify the contract.
- F** All modifications that require CCC approval processed through Paragraph 9D of this Appendix must be approved in writing by the authorized CCC official and the Participant or an individual granted signature authority through a valid Power of Attorney filed in the local Service Center. Unless signature authority is not granted or assigned on the Contract, any Participant on the Contract may approve modifications for the Contract.

## 10 CORRECTIONS

CCC reserves the right to correct all errors in entering data or the results of computations in this Contract.

## 11 CONTRACT TERMINATION

- A** If a Participant fails to carry-out the terms and conditions of this Contract, CCC may terminate this Contract. CCC may require the Participant to refund



payments received under this Contract, or require the Participant to accept such adjustments in subsequent payments as are determined to be appropriate by CCC. Refunds shall be subject to the provisions in Paragraph 5F of this Appendix.

- B** The CCC may terminate this Contract, in whole or in part, without liability, if CCC determines that continued operation of this Contract will result in the violation of a Federal statute or regulation, or if CCC determines that termination would be in the public interest.

## 12 RECOVERY OF COST

- A** In the event a Participant violates the terms of this Contract, the Participant voluntarily terminates this Contract before any contractual payments have been made, or this Contract is terminated with cause by CCC, the CCC will incur substantial costs in administering this Contract which may not be possible to quantify with certainty. Therefore, in addition to the refund of payments as set forth in Paragraph 11 of this Appendix, the **Participant agrees to pay liquidated damages up to an amount equal to 20 percent of the total financial assistance obligated to the Participant in this Contract**, at the time of termination. This liquidated damages payment is for recovery of administrative costs and technical services and is not a penalty.
- B** The Participant may be required by the CCC to refund all or a portion of any assistance earned under the program if the Participant sells or loses control of the land under this Contract and the new owner or transferee is not eligible for the program, or refuses to assume responsibility under the Contract.

## 13 EFFECTIVE DATE

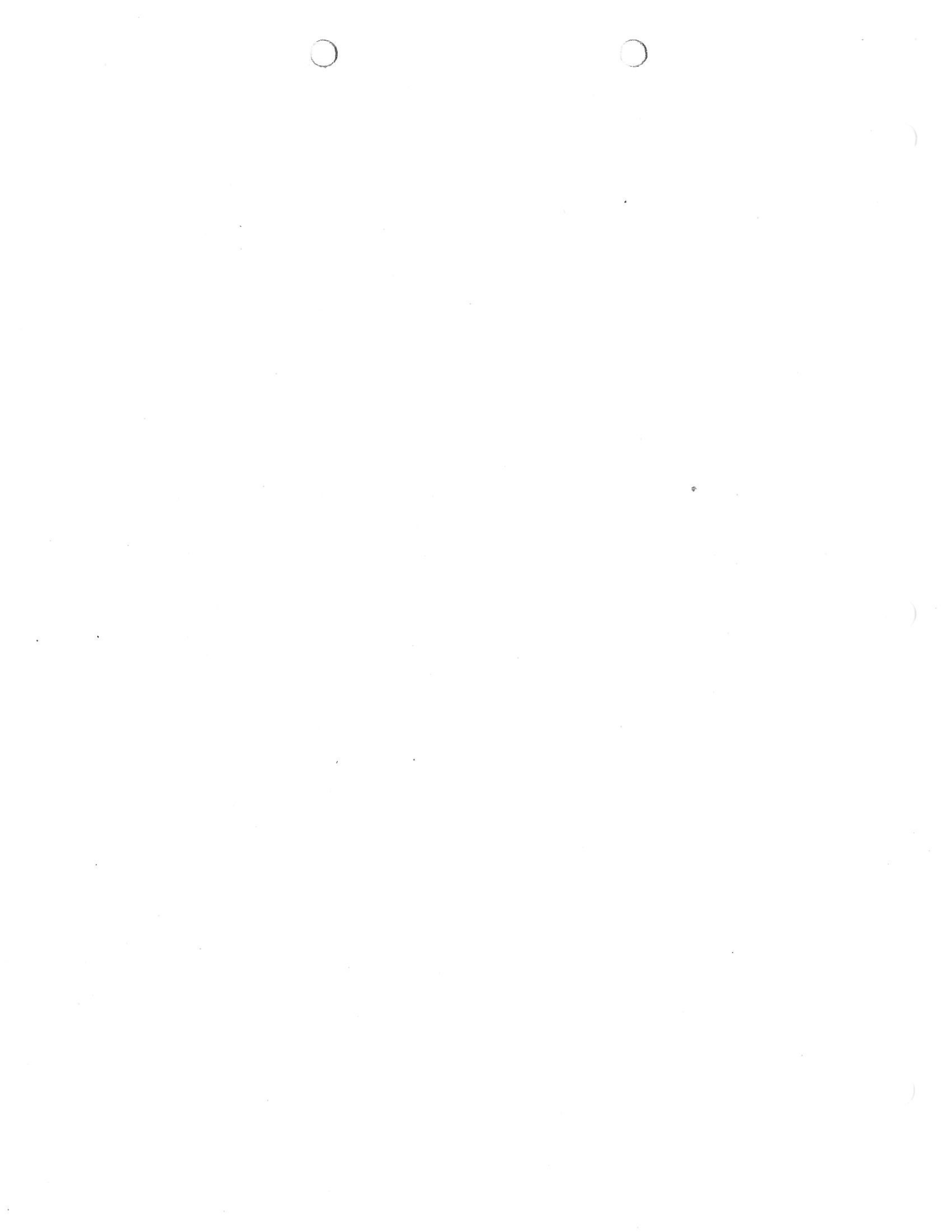
This Contract is effective when signed by the Participant and an authorized representative of CCC. Except as otherwise provided for herein, this Contract may not be terminated or modified unless by mutual agreement between the parties. Within the dates established by CCC, this Contract must be signed by all required Participants. In the event that a statute is enacted during the period of this Contract which would materially change the terms and conditions of this Contract, the CCC may require the Participant to elect between modifying this Contract consistent with the provisions of such statute or Contract termination.

## 14 GENERAL TERMS

- A** The regulations in 7 CFR part 1465 for AMA, 7 CFR part 636 for WHIP, 7 CFR part 1466 for EQIP, and any other applicable regulations are incorporated, by reference, herein. In the event of a conflict between these regulations and the terms of this Appendix, the provisions of the regulations will prevail.
- B** This Contract shall be carried out in accordance with all applicable Federal statutes and regulations. Any ambiguities in this Contract and questions as to the validity of any of its specific provisions shall be resolved in favor of CCC so as to give maximum effect to the conservation purposes of this Contract.



- C** NRCS is administering this Contract on behalf of the CCC. Therefore, where this Contract refers to "CCC", NRCS may act on its behalf for the purposes of administering this Contract. When the term "Participant" is used in this Contract, it shall be construed to mean all Participants signing this Contract. Likewise, when the term "Applicant" is used in this Contract, it means all Applicants signing the program application.
- D** Certification Regarding Debarment, Suspension, and Other Responsibility Matters - Primary Covered Transactions (7 CFR part 3017).
- (1) The Participant certifies to the best of the Participant's knowledge and belief, that the Participant and his or her principals:
- (a) Are not presently debarred, suspended, proposed for debarment, declared ineligible, or voluntarily excluded from covered transactions by any Federal department or agency;
  - (b) Have not within the three-year period preceding this agreement had a criminal conviction or civil judgment rendered against them for commission of fraud in connection with obtaining, attempting to obtain, or performing a public (Federal, State or local government) contract, including violation of Federal or State antitrust statutes or commission of embezzlement, theft, forgery, bribery, falsification or destruction of records, making false statements, or receiving stolen property;
  - (c) Are not presently indicted for or otherwise criminally or civilly charged by a governmental entity (Federal, State, or local) with commission of any of the offenses set forth above in Paragraph 14D(1)(b) of this certification; and
  - (d) Have not within the three-year period preceding this agreement had one or more public contracts (Federal, State or local) terminated for cause or default.
- (2) If the Participant is unable to certify to any of the statements set forth in paragraph 14D (1), the Participant shall attach an explanation to this agreement.
- E** This Contract is a financial assistance agreement, not a procurement contract. As such, it is **not subject to 5 CFR part 1315, Prompt Payment Act** and is governed by the terms set forth herein.
- F** The term "Contract" as used in this Appendix means the program documents, including: Conservation Program Contract, Form NRCS-CPA-1202 along with the—
- Appendix to Form NRCS-CPA-1202, Form NRCS-CPA-1202-CPC (Appendix);
  - Conservation Plan Schedule of Operations, Form NRCS-CPA-1155;
  - Revision of Plan/Schedule of Operations or Modification of a Contract, Form NRCS-CPA-1156; and
  - Transfer Agreement, form NRCS-CPA-152 for the transferee(s).





Such Contract shall set forth the terms and conditions for Conservation Program participation and receipt of Conservation Program payments.

**G** The term “Socially Disadvantaged” means an individual or entity who is a member of a socially disadvantaged group. For an entity, at least 50 percent ownership in the farm business must be held by socially disadvantaged individuals. A socially disadvantaged group is a group whose members have been subject to racial or ethnic prejudice because of their identity as members of a group without regard to their individual qualities. These groups consist of the following:

- American Indians or Alaskan Natives
- Asians
- Blacks or African Americans
- Native Hawaiians or other Pacific Islanders
- Hispanics.

Note: Gender alone is not a covered group for the purposes of NRCS conservation programs. And entities reflect a broad interpretation to include partnerships, couples, legal entities, etc.

**H** “Indian Tribe” means any Indian Tribe, band, nation, pueblo, or other organized group or community, including any Alaska Native village or regional or village corporation as defined in or established pursuant to the Alaska Native Claims Settlement Act (43 U.S.C. 1601 et seq. ) which is recognized as eligible for special programs and services provided by the United States to Indians because of their status as Indians.

Note: “Indian tribes recognized as eligible to receive services by the United States Bureau of Indian Affairs” is available at:  
<http://edocket.access.gpo.gov/2008/pdf/E8-6968.pdf>

**I** A Limited Resource Farmer or Rancher is a participant:

- With direct or indirect gross farm sales not more than the current indexed value in each of the previous two years, and
- Who has a total household income at or below the national poverty level for a family of four, or less than 50 percent of county median household income in each of the previous two years.

A legal entity or joint operation can be a Limited Resource Farmer or Rancher only if all individual members independently qualify.

A Self-Determination Tool is available to the public and may be completed on-line or printed and completed hardcopy at:  
<http://www.lrftool.sc.egov.usda.gov/>

Participants who self-certify eligibility as a Limited Resource Farmer or Rancher may be requested to provide records to justify their claim. It is the responsibility of the participant to provide accurate data. False certifications are subject to criminal and civil fraud statutes.



**J** A Beginning Farmer or Rancher is a participant who:

- Has not operated a farm or ranch, or who has operated a farm or ranch for not more than 10 consecutive years. This requirement applies to all members of a legal entity, and who
- will materially and substantially participate in the operation of the farm or ranch.

In the case of a contract with an individual, individually or with the immediate family, material and substantial participation requires that the individual provide substantial day-to-day labor and management of the farm or ranch, consistent with the practices in the county or State where the farm is located.

In the case of a contract made with a legal entity, all members must materially and substantially participate in the operation of the farm or ranch. Material and substantial participation requires that the members provide some amount of the management, or labor and management necessary for day-to-day activities, such that if the members did not provide these inputs, operation of the farm or ranch would be seriously impaired.

Participants who self-certify eligibility as a Beginner Farmer or Rancher may be requested to provide records to justify their claim. It is the responsibility of the participant to provide accurate data. False certifications are subject to criminal and civil fraud statutes.

**15** **RIGHTS TO APPEAL AND REQUEST EQUITABLE RELIEF**

**A** The Participant may appeal an adverse decision under this Contract in accordance with the appeal procedures set forth at 7 CFR part 11, Subpart A, and part 614. Pending the resolution of an appeal, no payments shall be made under this agreement. Before a Participant seeks judicial review, the Participant must exhaust all appeal rights granted within these regulations.

**B** The Participant may also request equitable relief as provided under 7 U.S.C. 7996 and 7 CFR part 635 with the requirements of that provision.

**16** **EXAMINATION OF RECORDS**

The Participant agrees to give the CCC or the Comptroller General, through any authorized representative, access to and the right to examine all records, books, papers, or documents related to this Contract. The Participant agrees to retain all records related to this agreement for a period of three (3) years after completion of the terms of this agreement in accordance with the applicable Office of Management and Budget circular.

**17** **DRUG-FREE WORKPLACE (7 CFR part 3021)**

By signing this Contract, the Participant certifies that the Participant will comply with the requirements of 7 CFR part 3021. If it is later determined that the Participant knowingly rendered a false certification, or otherwise violates the requirements of the Drug-Free Workplace Act (Public Law 100-690, Title V, Subtitle D; 41 U.S.C. 701 et seq.; 7 CFR part 3021,) CCC, in addition to any other remedies available to the United States, may take action authorized under the Drug-Free Workplace Act.



**18 CERTIFICATION REGARDING LOBBYING (7 CFR part 3018)  
(Applicable if this agreement exceeds \$100,000)**

The Participant certifies, to the best of the Participant's knowledge and belief, that:

- (1) No Federal appropriated funds have been paid or will be paid, by or on behalf of the Participant, to any person for influencing or attempting to influence an officer or employee of an agency, a Member of Congress, an officer or employee of Congress, or an employee of a Member of Congress in connection with the awarding of any Federal contract, the making of any Federal grant, the making of any Federal loan, the entering into of any cooperative agreement, and the extension, continuation, renewal, amendment, or modification of any Federal contract, grant, loan, or cooperative agreement;
- (2) If any funds other than Federal appropriated funds have been paid or will be paid to any person for influencing or attempting to influence an officer or employee of any agency, a Member of Congress, an officer or employee of Congress, or an employee of a Member of Congress, in connection with this Federal contract, grant, loan, or cooperative agreement, the undersigned shall complete and submit Standard Form - LLL, "Disclosure Form to Report Lobbying," in accordance with its instructions; and
- (3) The Participant shall require that the language of this certification be included in the award documents for all sub awards at all tiers (including sub contracts, sub grants, and contracts under grants, loans, and cooperative agreements) and that all sub recipients shall certify and disclose accordingly.

**19 CERTIFICATION AND ASSURANCES REGARDING COMPLIANCE WITH PROVISIONS  
APPLICABLE TO FINANCIAL ASSISTANCE (See generally 7 CFR parts 3015, 3016,  
and 3019)**

- A** As a condition of this Contract, the Participant certifies and assures that it is in compliance with and will comply in the course of the agreement with all applicable laws, regulations, Executive Orders and other generally applicable requirements, including those set out in 7 CFR 3115.205(b) applicable to non-profit institutions, which are hereby incorporated into this Contract by reference, and such other regulatory and statutory provisions as are specifically set forth herein.
- B** Without limiting the general applicability of Paragraph 19A, the Participant, if it is a non-profit, further agrees to comply with the provisions of 7 CFR part 3019, including the contract provisions required at Appendix A.



The following Participants by entering their signature acknowledge receipt of this Form NRCS-CPA-1202-CPC (Appendix) and agree to its terms and conditions thereof. Further, if the undersigned are succeeding to an existing Contract, the undersigned agree and certify that no agreement exists or will be entered into between the undersigned, the previous owner and operator of the property, or mortgage holder that would, maintain or create an interest in the property for any previous Participant on this Contract for that property, or to receive payments under the contracts.

*Reisib Farms By Michael R. Reisib* Date 6-19-09

\_\_\_\_\_ Date \_\_\_\_\_

\_\_\_\_\_ Date \_\_\_\_\_

\_\_\_\_\_ Date \_\_\_\_\_

\_\_\_\_\_ Date \_\_\_\_\_

\_\_\_\_\_ Date \_\_\_\_\_

\_\_\_\_\_ Date \_\_\_\_\_

\_\_\_\_\_ Date \_\_\_\_\_

\_\_\_\_\_ Date \_\_\_\_\_

\_\_\_\_\_ Date \_\_\_\_\_

\_\_\_\_\_ Date \_\_\_\_\_

\_\_\_\_\_ Date \_\_\_\_\_

\_\_\_\_\_ Date \_\_\_\_\_

\_\_\_\_\_ Date \_\_\_\_\_

\_\_\_\_\_ Date \_\_\_\_\_

\_\_\_\_\_ Date \_\_\_\_\_

The U.S. Department of Agriculture (USDA) prohibits discrimination in all its programs and activities on the basis of race, color, national origin, age, disability, and where applicable, sex, marital status, familial status, parental status, religion, sexual orientation, genetic information, political beliefs, reprisal, or because all or a part of an individual's income is derived from any public assistance program. (Not all prohibited bases apply to all programs.) Persons with disabilities who require alternative means for communication of program information (Braille, large print, audiotape, etc.) should contact USDA's TARGET Center at (202) 720-2600 (voice and TDD).

To file a complaint of discrimination write to USDA, Director, Office of Civil Rights, 1400 Independence Avenue, S.W., Washington, D.C. 20250-9410 or call (800) 795-3272 (voice) or (202) 720-6382 (TDD). USDA is an equal opportunity provider and employer.





US DEPARTMENT OF AGRICULTURE  
NATURAL RESOURCES CONSERVATION SERVICE

REVISION OF PLAN / SCHEDULE OF OPERATIONS  
OR MODIFICATION OF A CONTRACT

NRCS-CFA-1156  
OMB 0578-0013 Expires 9/30/09

PARTICIPANT RENICK FARMS		COUNTY AND STATE GRAY County, KS	PROGRAM AND CONTRACT NUMBER EQIP 2008 746215090BY	SUBACCOUNT 09 Water Quantity QRA - GMD 3
LAND UNITS OR LEGAL DESCRIPTION Farm.3512 Tract(s):1333499.		ACRES 494	MODIFICATION NUMBER AND DATE 1 --- N/A	EXPIRATION DATE 9/30/2013

Contract Item 1: Conservation Crop Rotation(328)

Practice Lifespan: 1 year

Status: Planned 2010

Conservation crop rotation is managed as a planned order of crops or crop types planted in sequence for two or more years to improve or maintain soil fertility, reduce erosion, reduce the build-up of pests, reduce reliance on agricultural chemicals, manage organic matter levels and increase potential net profits. See the Cropland Field Management Report in the Revised Universal Soil Loss Equation (RUSLE2). This practice shall be operated and maintained according to the NRCS practice standard. For contractual requirements, EQIP Ground and Surface Water Conservation (GSWC) or water quantity assistance will facilitate a net water savings in the ground or surface water resources in the agricultural operation of the producer. In Kansas, this is defined as an amount that is less than the average yearly water use (the five previous years to the contract, as documented in the application). The agricultural operation for this determination is defined as (1) the well(s) designated in the unit of concern and the land unit(s) attached to those water right(s), and/or (2) for ditch irrigation, the fields currently irrigated with the irrigation district allocation or share. Also, irrigation will cease with the first crop planted after the contract is approved. One year of maintenance (no irrigation) following the last year of payment is required to fulfill contract requirements. The water right for these acres will not be used to irrigate other land located elsewhere. All management practices listed in the conservation plan will be applied and maintained the life of the contract: Residue and Tillage Management, No Till (NRCS practice code 329).

Fields:

Tract: 259 Fields: 1; Tract: 1333499 Fields: 1, 2, 3, 4;

Contract Item	Planned Conservation Treatment	Planned Amount	Unit Cost	Cost Share Rate/Method	COMPLETION SCHEDULE AND ESTIMATED COST-SHARE OR PAYMENT BY YEAR		
					2010 \$	2011 \$	2012 \$
1a	Implementation of a conservation system where 100% of water right is converted to non-irr. cropland. Only irr. Ac. eligible for payment. Practice will be implemented min. of 3 yrs. Eligible only in KS Water Office, GMD, and DWR designated QRAs.	494 ac	8150.0000/ Acrc	74,100	562		
				<del>74,100</del>	NRCS-CFA-1245		
					12/28/09		

Notes: Payment rates define the unit cost rate of compensation to be received by the participant.



**REVISION OF PLAN / SCHEDULE OF OPERATIONS  
OR MODIFICATION OF A CONTRACT**

PARTICIPANT RENICK FARMS		COUNTY AND STATE GRAY County, KS	PROGRAM AND CONTRACT NUMBER EQIP 2008 746215090BY	SUBACCOUNT 09 Water Quantity QRA - GMD 3
LAND UNITS OR LEGAL DESCRIPTION Farm:3512 Tract(s):1333499.		ACRES 494	MODIFICATION NUMBER AND DATE 1 --- N/A	EXPIRATION DATE 9/30/2013

**Contract Item 2: Conservation Crop Rotation(328)**

Practice Lifespan: 1 year

Status: Planned 2011

Conservation crop rotation is managed as a planned order of crops or crop types planted in sequence for two or more years to improve or maintain soil fertility, reduce erosion, reduce the build-up of pests, reduce reliance on agricultural chemicals, manage organic matter levels and increase potential net profits. See the Cropland Field Management Report in the Revised Universal Soil Loss Equation (RUSLE2). This practice shall be operated and maintained according to the NRCS practice standard. For contractual requirements, EQIP Ground and Surface Water Conservation (GSWC) or water quantity assistance will facilitate a net water savings in the ground or surface water resources in the agricultural operation of the producer. In Kansas, this is defined as an amount that is less than the average yearly water use (the five previous years to the contract, as documented in the application). The agricultural operation for this determination is defined as (1) the well(s) designated in the unit of concern and the land unit(s) attached to those water right(s), and/or (2) for ditch irrigation, the fields currently irrigated with the irrigation district allocation or share. Also, irrigation will cease with the first crop planted after the contract is approved. One year of maintenance (no irrigation) following the last year of payment is required to fulfill contract requirements. The water right for these acres will not be used to irrigate other land located elsewhere. All management practices listed in the conservation plan will be applied and maintained the life of the contract: Residue and Tillage Management, No Till (NRCS practice code 329).

**Fields:**

Tract: 259 Fields: 1; Tract: 1333499 Fields: 1, 2, 3, 4;

Contract Item	Planned Conservation Treatment	Planned Amount	Unit Cost	Cost Share Rate/Method	COMPLETION SCHEDULE AND ESTIMATED COST-SHARE OR PAYMENT BY YEAR		
					2010 \$	2011 \$	2012 \$
2	Conservation Crop Rotation(328)	494 ac					
2a	Implementation of a cons. crop rotation system where 100% of water right is converted to non-irr. cropland. Only irr. Ac. eligible for payment. Practice will be implemented min. of 3 yrs. Eligible only in KS Water Office, GMD, and DWR designated QRAs.	494 Acre	\$150,0000/ Acre	PR <sup>1</sup>	74,100	74,100	

**Notes:** <sup>1</sup>Payment rates define the unit cost rate of compensation to be received by the participant.



**REVISION OF PLAN / SCHEDULE OF OPERATIONS  
OR MODIFICATION OF A CONTRACT**

PARTICIPANT KENICK FARMS		COUNTY AND STATE GRAY County, KS	PROGRAM AND CONTRACT NUMBER EQIP 2008 746215090BY	SUBACCOUNT 09 Water Quantity QRA - GMD 3
LAND UNITS OR LEGAL DESCRIPTION Farm:3512 Tract(s):1333499.		ACRES 494	MODIFICATION NUMBER AND DATE 1 --- N/A	EXPIRATION DATE 9/30/2013

**Contract Item 3: Conservation Crop Rotation(328)**

Practice Lifespan: 1 year

Status: Planned 2012

Conservation crop rotation is managed as a planned order of crops or crop types planted in sequence for two or more years to improve or maintain soil fertility, reduce erosion, reduce the build-up of pests, reduce reliance on agricultural chemicals, manage organic matter levels and increase potential net profits. See the Cropland Field Management Report in the Revised Universal Soil Loss Equation (RUSLE2). This practice shall be operated and maintained according to the NRCS practice standard. For contractual requirements, EQIP Ground and Surface Water Conservation (GSWC) or water quantity assistance will facilitate a net water savings in the ground or surface water resources in the agricultural operation of the producer. In Kansas, this is defined as an amount that is less than the average yearly water use (the five previous years to the contract, as documented in the application). The agricultural operation for this determination is defined as (1) the well(s) designated in the unit of concern and the land unit(s) attached to those water right(s), and/or (2) for ditch irrigation, the fields currently irrigated with the irrigation district allocation or share. Also, irrigation will cease with the first crop planted after the contract is approved. One year of maintenance (no irrigation) following the last year of payment is required to fulfill contract requirements. The water right for these acres will not be used to irrigate other land located elsewhere. All management practices listed in the conservation plan will be applied and maintained the life of the contract: Residue and Tillage Management, No Till (NRCS practice code 329).

**Fields:**

Tract: 259 Fields: 1; Tract: 1333499 Fields: 1, 2, 3, 4;

Contract Item	Planned Conservation Treatment	Planned Amount	Unit Cost	Cost Share Rate/Method	COMPLETION SCHEDULE AND ESTIMATED COST-SHARE OR PAYMENT BY YEAR		
					2010 \$	2011 \$	2012 \$
3	Conservation Crop Rotation(328)	494 ac					
3a	Implementation of a cons. crop rotation system where 100% of water right is converted to non-irr. cropland. Only irr. Ac. eligible for payment. Practice will be implemented min. of 3 yrs. Eligible only in KS Water Office, GMD, and DWR designated QRAs.	494 Acre	\$150,0000/ Acre	PR <sup>1</sup>		74,100	74,100

**Notes:** <sup>1</sup>Payment rates define the unit cost rate of compensation to be received by the participant.

**Basis for Modification or Revision**

Tract number was omitted from the legal driscription on the CPO - NRCS error.



**REVISION OF PLAN / SCHEDULE OF OPERATIONS  
OR MODIFICATION OF A CONTRACT**

<b>PARTICIPANT</b> RENICK FARMS	<b>COUNTY AND STATE</b> GRAY County, KS	<b>PROGRAM AND CONTRACT NUMBER</b> EQIP 2008 746215090BY	<b>SUBACCOUNT</b> 09 Water Quantity QRA - GMD 3
<b>LAND UNITS OR LEGAL DESCRIPTION</b> Farm:3512 Tract(s):1333499.		<b>ACRES</b> 494	<b>MODIFICATION NUMBER AND DATE</b> 1 --- N/A
		<b>EXPIRATION DATE</b> 9/30/2013	

Total Cost-Share or Payment by Year				Total Contract Payment
Year	2010	2011	2012	
Amount(\$)	\$74,100	\$74,100	\$74,100	\$222,300

NOTES: A. All items numbers on form NRCS-CPA-1156 must be carried out as part of this contract to prevent violation.  
 B. When established, the conservation practices identified by the numbered items must be maintained by the participant at no cost to the government.  
 C. All cost share rates are based on average cost (AC) with the following exceptions:  
 AA = Actual cost not to exceed average cost; FR = Flat Rate; NC = Non cost-shared; AM = Actual cost not to exceed a specified maximum; PR = Payment rates.  
 D. By signing, the participant acknowledges receipt of this conservation plan including this form NRCS-CPA-1156 and agrees to comply with the terms and conditions here of.

**Certification of Participants**

Signature RENICK FARMS <i>Renick Farms</i>	Date 7-15-09	Signature	Date
--	-----------------	-----------	------

**Signatures of Reviewing Officials**

District Conservationist - Technical Adequacy Certification

Signature: *Jeffrey D. Jackson*

Date: 7/14/09

Approved by - Concurrence of NRCS Representative

Signature:

Date:

**PUBLIC BURDEN STATEMENT**

According to the Paperwork Reduction Act of 1995, an agency may not conduct or sponsor, and a person is not required to respond to a collection of information unless it displays a valid OMB control number. The valid OMB control number for this information collections is 0578-0013. The time required to complete this information collection is estimated to average 45/0.75 minutes per response, including the time for reviewing instructions, searching existing data sources, gathering and maintaining the data needed, and completing and reviewing the collection of information.

The above statements are made in accordance with the Privacy Act of 1974 (5 U.S.C 522a). Furnishing this information is voluntary; however failure to furnish correct, complete information will result in the withholding or withdrawal of such technical or financial assistance. The information may be furnished to other USDA agencies, the Internal Revenue Service, the Department of Justice, or other state or federal law enforcement agencies, or in response to orders of a court, magistrate, or administrative tribunal.

**PRIVACY ACT**

**USDA NON-DISCRIMINATION STATEMENT**

"The U.S. Department of Agriculture (USDA) prohibits discrimination in all its programs and activities on the basis of race, color, national origin, age, disability, and where applicable, sex, marital status, familial status, parental status, religion, sexual orientation, genetic information, political beliefs, reprisal, or because all or a part of an individual's income is derived from any public assistance program. (Not all prohibited bases apply to all programs.) Persons with disabilities who require alternative means for communication of program information (Braille, large print, audiotape, etc.) should contact USDA's TARGET Center at (202) 720-2600 (voice and TDD). To file a complaint of discrimination write to USDA, Director, Office of Civil Rights, 1400 Independence Avenue, S.W., Washington, D.C. 20250-9410 or call (800) 795-3272 (voice) or (202) 720-6382 (TDD). USDA is an equal opportunity provider and employer."





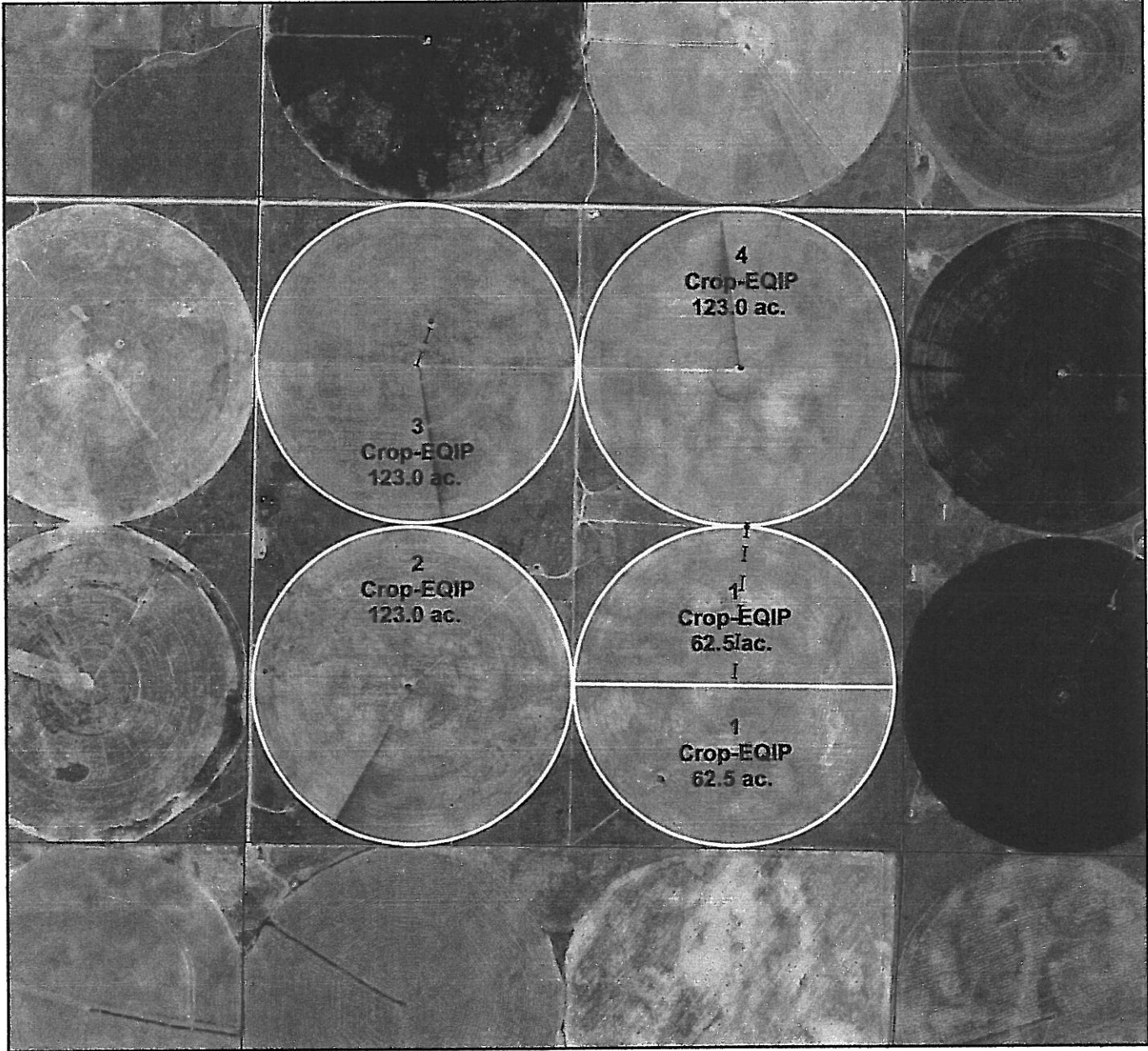
# Conservation Plan Map

Date: 4/28/2009

Customer(s): RENICK FARMS  
District: GRAY COUNTY CONSERVATION DISTRICT

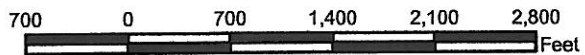
Field Office: CIMARRON SERVICE CENTER  
Agency: Natural Resource Conservation Service  
Assisted By: Ladner, Jeffrey D

Legal Description: 20-26-29



## Legend

- Water Well
- Pipeline
- Consplan
- plss\_a\_ks069





## Water Right Summary

Auction Tract	Water Right File #	Source	ID	Well Location	Authorized Quantity Acre Feet	Authorized Rate gpm	Total Acres Authorized for Irrigation	Overlaps, Limitations and/or Special Conditions
1	11487, 14870	G	1	NE 25-25-30	603	1700	1550	Yes
1	14870, 11487	G	1	NE 25-25-30	219	1700	1550	Yes
1	14870	G	4	SW 23-25-30	500	1360	1550	Yes
1	14870	G	2	SE 23-25-30	338	1640	1550	Yes
2	18249	G	1	SE 24-25-30	480	1420	1550	Yes
2	25757	G	3	NE NW NE 30-25-29	412	1345	280	No
5	23548	G	5	NC SW 25-25-30	252	980	838	Yes
5	23548	G	4	NW 25-25-30	164	835	838	Yes
5	23548	G	2	NC SE 26-25-30	252	1000	838	Yes
5	23548	G	3	NC SW 26-25-30	252	970	838	Yes
6	23548	G	3	NC NW 36-25-30	252	830	838	Yes
6	23548	G	1	NC NE 35-25-30	252	880	838	Yes
6	23548	G	2	NC NW 35-25-30	252	835	838	Yes
7	28237	G	5	SW SW NE 34-25-30	255	850	272	Yes
7	28237	G	4	NC SE 34-25-30	262	695	272	Yes
8	25234	G	3	NC SW 35-25-30	259	805	272	Yes
8	25234	G	4	NC SE 35-25-30	285	900	272	Yes
9	24385	G	4	NC SW 36-25-30	300	880	150	No
10	23547	G	5	NC SE 30-25-29	252	865	756	Yes
10	23547	G	1	SW 30-25-29	252	840	756	Yes
10	23547	G	7	NW SW SE 25-25-30	226	690	756	Yes
11	23547	G	2	NC NE 36-25-30	252	1045	756	Yes
11	23547	G	2	NC NW 31-25-29	252	1030	756	Yes
11	23547	G	1	NC NE 31-25-29	252	995	756	Yes
12	19977	G	1	NC SE 36-25-30	280	895	140	Yes
13	29083	G	3	NC SW 31-25-29	263	800	642	Yes
13	29083	G	4	NC SE 31-25-29	272	878	642	Yes
14	29083	G	4	NW 1-26-30	257	804	642	Yes
15	21716	G	2	SW NW NW 1-26-30	252	825	294	Yes
15	21716	G	3	NC N2 S2 N2 1-26-30	248	790	294	Yes
16	18794	G	1	NC S2 S2 1-26-30	520	1465	480	Yes
16	18794	G	1	NC SW 6-26-29	260	835	480	Yes
22	8627, 11215, FI 14	G	1	SW 18-25-30	65	910	287	Yes
22	8627, 11215, FI 14	G	2	SE 13-25-31	71	990	287	Yes
22	11215, 8627, FI 14	G	1	SW 18-25-30	121	910	287	Yes
22	11215, 8627, FI 14	G	2	SE 13-25-31	131	990	287	Yes
22	FI 14, 8627, 11215	G	2	SE 13-25-31	184	1000	287	Yes
22	FI 14, 8627, 11215	G	1	SW 18-25-30	184	1000	287	Yes
22	FI 14, 8627, 11215	G	1	C N2 S2 13-25-31	184	1000	287	Yes

This information is taken from the Division of Water Resources database and is believed to be current and correct as of August 24, 2010. Please contact GMD 3 or the Division of Water Resources (620-276-2901) if you have any questions. Due to the complexity of the water rights and their associated point of diversion and place of use overlaps, some quantities are repeated and not cumulative. In some cases special conditions and/or limitations apply as set forth by each water right. Any person using this information should verify to their own satisfaction.



Auction Tract	Field #	WR#	S-T-R	Quarter	Date Flow Tested	Test Location	Test GPM
1	74	14870	23-25-30	SW	6/15/2010	Pivot	750
1	75	14870	23-25-30	SE	5/25/2010	Pivot SW 24	800
1	77	11487	25-25-30	NE	5/25/2010	Pivot NW 25	366.1
2	12	25757	30-25-29	NE	5/25/2010	Pivot NE30	500
2	68	18249	24-25-29	SE	5/25/2010	Pivot	1237.5
5	44	23548	25-25-30	SW	6/2/2010	Pivot	671.5
5	45	23548	25-25-30	NW	6/8/2010	Pivot	349.8
5	46	23548	26-25-30	SE	6/8/2010	Pivot	NA
5	47	23548	26-25-30	SW	6/8/2010	Pivot	446.8
6	55	23548	36-25-30	NW	6/15/2010	Pivot	412.8
6	56	23548	35-25-30	NE	6/8/2010	Pivot	407.6
6	57	23548	35-25-30	NW	6/2/2010	Pivot	633.7
7	61	28237	34-25-30	NE	6/2/2010	Well	834.7
7	62	28237	34-25-30	SE	5/26/2010	Pivot	520
8	58	25234	35-25-30	SW	5/26/2010	Pivot	566.5
8	59	25234	35-25-30	SE	5/26/2010	Pivot	680
9	60	24385	36-25-30	SW	6/2/2010	Pivot	602.1
10	41	23547	30-25-29	SE	6/2/2010	Pivot	363.9
10	42	23547	30-25-29	SW	4/15/2010	Pivot	722
10	43	23547	25-25-30	SE	4/15/2010	Pivot	844.9
11	63	23547	36-25-30	NE	7/28/2010	Pivot	361.4
11	64	23547	31-25-29	NW	6/2/2010	Pivot	399.1
11	65	23547	31-25-29	NE	6/2/2010	Pivot	377.4
12	7	19977	36-25-30	SE	4/29/2010	Pivot	545.9
13	69	29083	31-25-29	SW	6/2/2010	Pivot	458.4
13	70	29083	31-25-29	SE	4/29/2010	Pivot	460.7
14	72	29083	1-26-30	NE	4/29/2010	Pivot	536.3
15	8	21716	1-26-30	NW	4/29/2010	Pivot	425.8
15	9	21716	1-26-30	NC	4/15/2010	Pivot, Center Sec 1	668.7
16	10	18794	1-26-30	NC S2 S2	4/15/2010	Pivot SW	732.4
16	11	18794	1-26-30	NC S2 S2	4/15/2010	Pivot SE	743.8
22	13	F114	13-25-31	SE	7/28/2010	Pivot	321.6



**2009 Sprinkler Charts**  
**Updated 6-11-10**

<b>Auction</b>	<b>Circle</b>	<b>Sprinkler</b>	<b>Sprinkler</b>	<b>Panel</b>	<b>Pipeline</b>	<b>Nozzle</b>	<b>Sprinkler</b>
<b>Tract</b>	<b>#</b>	<b>Year</b>	<b>Brand</b>	<b>Brand</b>	<b>Type</b>	<b>Pkg</b>	<b>Length</b>
						<b>Type</b>	<b>(Total Feet)</b>
1	74	2007	Zimmatic	Grow-Smart	Poly-lined	I-Wobb	2154
1	75	2007	Zimmatic	Grow-Smart	Poly-lined	I-Wobb	1818
1	77	1979	Zimmatic	Aims	PVC (under-slung)	D-3000	992
2	12	1994	Zimmatic	Aims	Epoxy-coated	LDN	1785
2	68	1994	Zimmatic	Aims	Epoxy-coated	LDN	2077
5	44	1991	Zimmatic	Standard	Epoxy-coated	Accel	1293
5	45	1991	Zimmatic	Aims	PVC (under-slung)	D-3000	967
5	46	2009	Zimmatic	Grow-Smart	Poly-lined	I-Wobb	1282
5	47	1975	Valley	Standard	PVC (under-slung)	LDN	1298
6	55	2004	Zimmatic	Grow-Smart	Aluminum	I-Wobb	1292
6	56	1998	Zimmatic	Aims	Galvanized	I-Wobb	1292
6	57	2004	Zimmatic	Grow-Smart	Stainless steel	I-Wobb	1293
7	61	1998	Zimmatic	Aims	Galvanized	I-Wobb	1292
7	62	1986	Zimmatic	Standard	Galvanized	LDN	1305
8	58	1976	Valley	Grow-Smart	Galvanized	D-3000	1298
8	59	2008	Zimmatic	Grow-Smart	Poly-lined	I-Wobb	1284
9	60	1986	Zimmatic	Standard	Galvanized	LDN	1301
10	41	2001	Zimmatic	Aims	Stainless steel/Epoxy coated	LDN	1300
10	42	2004	Zimmatic	Grow-Smart	Aluminum	I-Wobb	1303
10	43	1998	Zimmatic	Grow-Smart	Galvanized	I-Wobb	1300
11	63	2003	Zimmatic	Grow-Smart	Stainless steel	I-Wobb	1303
11	64	2004	Zimmatic	Grow-Smart	Aluminum	I-Wobb	1292
11	65	1990	Valley	Standard	Galvanized	I-Wobb	1301
12	7	2007	Zimmatic	Grow-Smart	Galvanized	I-Wobb	1291
13	69	2002	Zimmatic	Aims	Galvanized	LDN	1303
13	70	2002	Zimmatic	Aims	Galvanized	LDN	1269
14	72	1978	Zimmatic	Standard	Galvanized	D-3000	1262
15	8	1979	Zimmatic	Standard	Galvanized	D-3000	1234
15	9	1975	Valley	Grow-Smart	Galvanized	D-3000	1297
16	10	1979	Zimmatic	Standard	Galvanized	LDN	1305
16	11	1979	Zimmatic	Standard	Galvanized	LDN	1305
22	13	1997	Valley	Standard	Poly-lined	D-3000	1295
25	52	1977	Valley	Standard	Galvanized	LDN	1298
25	53	1977	Valley	Standard	Galvanized	LDN	1298
26	51	1976	Valley	Standard	Galvanized	D-3000	1298
26	54	1977	Valley	Standard	Galvanized	LDN	1298







**PRODUCTION, YIELD AND ACREAGE REPORT  
STONINGTON INSURANCE COMPANY**

Administered By: Agro National  
Policy #: KS-631-0988914-10

This is my:  Production Report

Multiple Peril Crop Insurance

Page 2 of 8

**Policyholder Information**  
RENICK FARMS  
10502 6 ROAD  
INGALLS, KS 67853-9217  
Phone: (620)855-3820  
Entity Type: P

**Agency/Agent Information**  
WESTERN KANSAS INSURANCE SERVICES  
PO BOX 1142  
310 COURT STREET  
SCOTT CITY, KS 67871  
Phone: (620)872-5866 Code: 954223

APH Computation for  
Crop Year: 2010  
State  
20-KANSAS  
County  
069-GRAY  
Print Date: 08/05/2010  
CSR:Elise B

Year  
2010  
Crop  
WHEAT  
Plan  
RA  
Level  
70%  
Options  
FHYA  
Price %  
100%

Unit # 00104	Crop WHEAT	Unit # 00105	Crop WHEAT	Unit # 00106	Crop WHEAT	Unit # 00107	Crop WHEAT
Practice I	County 069-GRAY	Practice I	County 069-GRAY	Practice SE	County 069-GRAY	Practice SF	County 069-GRAY
Type/Class/Etc. NTS	FSA # 3513	Type/Class/Etc. NTS	FSA # 3513	Type/Class/Etc. NTS	FSA # 3513	Type/Class/Etc. NTS	FSA # 3513
Twp / Range	Section(s)	Twp / Range	Section(s)	Twp / Range	Section(s)	Twp / Range	Section(s)
025S 029W 31	11 13	025S 030W 23/26	5	025S 030W 23/26	5	025S 030W 24	2

Farm Name		Farm Name		Farm Name		Farm Name	
Other Entities		Other Entities		Other Entities		Other Entities	
Class #		Class #		Class #		Class #	
Processor # / Name and/or # of Trees or Vines		Processor # / Name and/or # of Trees or Vines		Processor # / Name and/or # of Trees or Vines		Processor # / Name and/or # of Trees or Vines	

Yr	Production	Acres	Yield	T Yield	Yr	Production	Acres	Yield	T Yield
95	0.0	253.9	44.0A	46.0	00	0.0	54.7	29.0A	36.0
97	0.0	115.0	59.0A	46.0	01	0.0	0.0	0.0Z	36.0
02	0.0	123.0	22.0A	Prior	02	0.0	0.0	0.0Z	Prior
03	7135.4	123.0	58.0A	Yield	03	500.5	55.9	9.0A	Yield
04	14195.0	241.0	59.0A	48.0	04	0.0	0.0	0.0Z	29.0
05	16943.3	364.0	47.0A	Yield	05	1711.2	55.2	31.0A	Yield
06	2851.0	125.0	23.0A	0.0	06	0.0	0.0	0.0Z	Floor
07	9382.0	240.3	39.0A	0.0	07	3544.6	95.7	37.0A	29.0
08	8367.3	123.0	68.0A	Approved	08	0.0	0.0	0.0Z	Approved
Sub-Tots				Yield	Sub-Tots				Yield
09	72.3	241.0	0.0A	45.0	09	0.0	0.0	0.0Z	29.0
YA	60%			YA	60%				YA
Yield Total	# of Years	Rate Yield	Guar Yield	YA	60%	Yield Total	# of Years	Rate Yield	Guar Yield
42.0		42.0	31.5	37.8		27.0		27.0	20.3

Yr	Production	Acres	Yield	T Yield	Yr	Production	Acres	Yield	T Yield
00	0.0	360.4	58.0A	46.0	00	0.0	54.7	29.0A	36.0
01	0.0	105.0	11.0A	46.0	01	0.0	0.0	0.0Z	36.0
02	0.0	250.7	57.0A	Prior	02	0.0	0.0	0.0Z	Prior
03	26881.9	338.0	80.0A	Yield	03	500.5	55.9	9.0A	Yield
04	18642.3	338.0	55.0A	57.0	04	0.0	0.0	0.0Z	29.0
05	14854.3	165.0	90.0A	Yield	05	1711.2	55.2	31.0A	Yield
06	6225.0	165.0	38.0A	0.0	06	0.0	0.0	0.0Z	Floor
07	13521.6	246.0	55.0A	Approved	07	3544.6	95.7	37.0A	29.0
Sub-Tots				Yield	Sub-Tots				Yield
09	418.2	246.0	2.0A	54.0	09	0.0	0.0	0.0Z	29.0
YA	60%			YA	60%				YA
Yield Total	# of Years	Rate Yield	Guar Yield	YA	60%	Yield Total	# of Years	Rate Yield	Guar Yield
50.0		50.0	37.8	37.8		27.0		27.0	20.3

Yr	Production	Acres	Yield	T Yield	Yr	Production	Acres	Yield	T Yield
00	0.0	360.4	58.0A	46.0	00	0.0	54.7	29.0A	36.0
01	0.0	105.0	11.0A	46.0	01	0.0	0.0	0.0Z	36.0
02	0.0	250.7	57.0A	Prior	02	0.0	0.0	0.0Z	Prior
03	26881.9	338.0	80.0A	Yield	03	500.5	55.9	9.0A	Yield
04	18642.3	338.0	55.0A	57.0	04	0.0	0.0	0.0Z	29.0
05	14854.3	165.0	90.0A	Yield	05	1711.2	55.2	31.0A	Yield
06	6225.0	165.0	38.0A	0.0	06	0.0	0.0	0.0Z	Floor
07	13521.6	246.0	55.0A	Approved	07	3544.6	95.7	37.0A	29.0
Sub-Tots				Yield	Sub-Tots				Yield
09	418.2	246.0	2.0A	54.0	09	0.0	0.0	0.0Z	29.0
YA	60%			YA	60%				YA
Yield Total	# of Years	Rate Yield	Guar Yield	YA	60%	Yield Total	# of Years	Rate Yield	Guar Yield
50.0		50.0	37.8	37.8		27.0		27.0	20.3

Yr	Production	Acres	Yield	T Yield	Yr	Production	Acres	Yield	T Yield
00	0.0	37.5	31.0A	36.0	00	0.0	37.5	31.0A	36.0
01	0.0	0.0	0.0Z	36.0	01	0.0	0.0	0.0Z	36.0
02	0.0	0.0	0.0Z	Prior	02	0.0	0.0	0.0Z	Prior
03	261.0	27.8	9.0A	Yield	03	261.0	27.8	9.0A	Yield
04	0.0	0.0	0.0Z	31.0	04	0.0	0.0	0.0Z	31.0
05	843.0	27.8	30.0A	Yield	05	843.0	27.8	30.0A	Yield
06	0.0	0.0	0.0Z	Floor	06	0.0	0.0	0.0Z	Floor
07	1225.8	27.8	44.0A	0.0	07	1225.8	27.8	44.0A	0.0
08	0.0	0.0	0.0Z	Approved	08	0.0	0.0	0.0Z	Approved
Sub-Tots				Yield	Sub-Tots				Yield
09	0.0	0.0	0.0Z	31.0	09	0.0	0.0	0.0Z	31.0
YA	60%			YA	60%				YA
Yield Total	# of Years	Rate Yield	Guar Yield	YA	60%	Yield Total	# of Years	Rate Yield	Guar Yield
29.0		29.0	21.7	21.7		29.0		29.0	21.7

Farm Name		Farm Name		Farm Name		Farm Name	
Other Entities		Other Entities		Other Entities		Other Entities	
Class #		Class #		Class #		Class #	
Processor # / Name and/or # of Trees or Vines		Processor # / Name and/or # of Trees or Vines		Processor # / Name and/or # of Trees or Vines		Processor # / Name and/or # of Trees or Vines	
Remarks		Remarks		Remarks		Remarks	
Record Type A B C D E F Map/Risk <None>		Record Type A B C D E F Map/Risk <None>		Record Type A B C D E F Map/Risk <None>		Record Type A B C D E F Map/Risk <None>	
Plant Acres	Plant Date	Plant Acres	Plant Date	Plant Acres	Plant Date	Plant Acres	Plant Date
PP	Int %	PP	Int %	PP	Int %	PP	Int %
0	0	0	0	0	0	0	0
0	0	0	0	0	0	0	0
0	0	0	0	0	0	0	0
0	0	0	0	0	0	0	0



**PRODUCTION, YIELD AND ACREAGE REPORT**  
**STONINGTON INSURANCE COMPANY**

Administered By: Agro National  
Policy #: KS-631-0988914-10

This is my:  Production Report

Multiple Peril Crop Insurance

**Policyholder Information**

RENICK FARMS  
10502 6 ROAD  
INGALLS, KS 67853-9217

Phone: (620)855-3820  
Entity Type: P

**Agency/Agent Information**

WESTERN KANSAS INSURANCE SERVICES  
PO BOX 1142  
310 COURT STREET  
SCOTT CITY, KS 67871

Phone: (620)872-5866 Code: 954223

**APH Computation for**

Crop Year: 2010  
State  
20-KANSAS  
County  
069-GRAY

Print Date: 08/05/2010  
CSR:Elise B

**Year**

2010

**Crop**

WHEAT

**Plan**

RA

**Level**

70%

**Options**

FHYA

**Price %**

100%

Unit #	Crop	Practice	County	FSA #	Section(s)	Unit #	Crop	Practice	County	FSA #	Section(s)	Unit #	Crop	Practice	County	FSA #	Section(s)
00112	WHEAT	I	069-GRAY	3512	20	00114	WHEAT	CC	069-GRAY	3513	14, 15, 16	00114	WHEAT	CC	069-GRAY	3513	14, 15, 16
00113	WHEAT	I	069-GRAY	3513	14, 15, 16	00114	WHEAT	CC	069-GRAY	3513	14, 15, 16	00114	WHEAT	CC	069-GRAY	3513	14, 15, 16
00114	WHEAT	I	069-GRAY	3513	14, 15, 16	00114	WHEAT	CC	069-GRAY	3513	14, 15, 16	00114	WHEAT	CC	069-GRAY	3513	14, 15, 16

Processor # / Name and/or # of Trees or Vines	Yr	Production	Acres	Yield	T Yield	Yr	Production	Acres	Yield	T Yield	Yr	Production	Acres	Yield	T Yield
	96	0.0	376.1	37.0A	46.0	97	0.0	125.0	40.0A	46.0	98	0.0	0.0	0.0	36.0T
	97	0.0	376.2	46.0A	70.0A	98	0.0	249.1	70.0A	30.0	99	0.0	16.0	54.0A	36.0
	02	0.0	0.0	0.02	Prior	99	0.0	121.0	60.0A	Prior	02	0.0	0.0	0.02	0.02
	03	0.0	0.0	0.02	Yield	02	0.0	242.9	58.0A	28.0F	03	202.3	16.0	13.0A	13.0A
	04	0.0	0.0	0.02	40.0	94	0.0	123.3	46.0A	26.0	04	0.0	0.0	0.02	42.0
	05	0.0	0.0	0.02	Yield	95	0.0	123.7	60.0A	32.0A	05	0.0	0.0	0.02	0.02
	06	4516.5	123.0	37.0A	80.0A	96	0.0	123.0	80.0A	0.02	06	0.0	0.0	0.02	0.02
	07	20273.1	494.0	41.0A	0.0	97	0.0	123.0	87.0A	0.0	07	888.5	16.0	56.0A	56.0A
	08	0.0	0.0	0.02	Approved	98	0.0	241.0	59.0A	Approved	08	0.0	0.0	0.02	0.02
	Sub-Tots	0.0	0.0	0.02	40.0	02	51.95.1	118.0	44.0A	60.0	Sub-Tots	0.0	0.0	0.02	42.0
	Yield Total	# of Years	Rate Yield	Guar Yield	2.8	09	0.0	0.0	0.02	YA 60%	Sub-Tots	0.0	0.0	0.02	0.02
	40.0	40.0	40.0	28		Yield Total	# of Years	Rate Yield	Guar Yield	18.2	09	0.0	0.0	0.02	29.4
	Record Type A B C D E F Map/Risk <None>	Record Type A B C D E F Map/Risk <None>	Record Type A B C D E F Map/Risk <None>	Record Type A B C D E F Map/Risk <None>	Record Type A B C D E F Map/Risk <None>	42	60.0	60.0	42		Yield Total	# of Years	Rate Yield	Guar Yield	40.0
	Remarks	Remarks	Remarks	Remarks	Remarks	Record Type A B C D E F Map/Risk <None>	Record Type A B C D E F Map/Risk <None>	Record Type A B C D E F Map/Risk <None>	Record Type A B C D E F Map/Risk <None>	Record Type A B C D E F Map/Risk <None>	40.0	40.0	40.0	40.0	40.0
	Plant Acres	Plant Acres	Plant Acres	Plant Acres	Plant Acres	Record Type A B C D E F Map/Risk <None>	Record Type A B C D E F Map/Risk <None>	Record Type A B C D E F Map/Risk <None>	Record Type A B C D E F Map/Risk <None>	Record Type A B C D E F Map/Risk <None>	40.0	40.0	40.0	40.0	40.0
	PP Acres	PP Acres	PP Acres	PP Acres	PP Acres	Record Type A B C D E F Map/Risk <None>	Record Type A B C D E F Map/Risk <None>	Record Type A B C D E F Map/Risk <None>	Record Type A B C D E F Map/Risk <None>	Record Type A B C D E F Map/Risk <None>	1	1	1	1	1
	Int %	Int %	Int %	Int %	Int %	Record Type A B C D E F Map/Risk <None>	Record Type A B C D E F Map/Risk <None>	Record Type A B C D E F Map/Risk <None>	Record Type A B C D E F Map/Risk <None>	Record Type A B C D E F Map/Risk <None>	0	0	0	0	0
	Plant Date	Plant Date	Plant Date	Plant Date	Plant Date	Record Type A B C D E F Map/Risk <None>	Record Type A B C D E F Map/Risk <None>	Record Type A B C D E F Map/Risk <None>	Record Type A B C D E F Map/Risk <None>	Record Type A B C D E F Map/Risk <None>	0	0	0	0	0

**PRODUCTION, YIELD AND ACREAGE REPORT**  
**STONINGTON INSURANCE COMPANY**

This is my:  Production Report

Multiple Peril Crop Insurance

Page 5 of 8

<b>Policyholder Information</b>		<b>Agency/Agent Information</b>	
RENICK FARMS 10502 6 ROAD INGALLS, KS 67853-9217 Phone: (620)855-3820 Entity Type: P		WESTERN KANSAS INSURANCE SERVICES PO BOX 1142 310 COURT STREET SCOTT CITY, KS 67871 Phone: (620)872-5866 Code: 954223	
APH Computation for Crop Year: 2010 State 20-KANSAS County 069-GRAY		Crop Year: 2010 WHEAT 70% FHYA 100%	
Print Date: 08/05/2010 CSR:Elise B		Crop WHEAT	

Unit #	Crop	Practice I	County	Practice SF	County	Unit #	Crop	Practice SF	County
00115	WHEAT	069-GRAY	3353	00117	069-GRAY	00118	WHEAT	00117	069-GRAY
Type/Class/Etc. NTS		FSA # 3353		Type/Class/Etc. NTS		FSA # 3513		Type/Class/Etc. NTS	
Twp / Range		Section(s)		Twp / Range		Section(s)		Twp / Range	
026S 029W 6		X		025S 029W 31		11		025S 030W 34	
026S 029W 4		X		025S 029W 31		13			

Farm Name	17	Farm Name	20 & 21
Other Entities		Other Entities	
Class #		Class #	

Processor # / Name and/or # of Trees or Vines									
Yr	Production	Acres	Yield	T Yield	Yr	Production	Acres	Yield	T Yield
00	0.0	0.0	0.0	56.0	00	0.0	0.0	0.0	36.0
01	0.0	0.0	0.0	0.0	01	0.0	0.0	0.0	0.0
02	0.0	0.0	0.0	Prior Yield	02	0.0	0.0	0.0	Prior Yield
03	0.0	0.0	0.0	63.0	03	0.0	0.0	0.0	33.0
04	0.0	0.0	56.0C	51.0	04	0.0	0.0	36.0T	36.0T
05	0.0	0.0	56.0C	56.0L	05	0.0	0.0	36.0T	36.0T
06	8473.3	123.0	69.0A	17.0A	06	0.0	0.0	36.0T	36.0T
07	0.0	0.0	0.0Z	56.0A	07	694.4	32.0	22.0A	0.0
08	8699.6	123.0	71.0A	0.0Z	08	0.0	0.0	0.0Z	0.0Z
Sub-Tots			63.0	YA 60%	Sub-Tots			33.0	33.0
09	0.0	0.0	0.0Z	51.0	09	0.0	0.0	0.0Z	0.0Z
Yield Total	# of Years	Rate Yield	Guar Yld	35.7	Yield Total	# of Years	Rate Yield	Guar Yld	23.1
63.0	44.1	46.0	35.7	<None>	33.0	33.0	33.0	23.1	<None>

Processor # / Name and/or # of Trees or Vines									
Yr	Production	Acres	Yield	T Yield	Yr	Production	Acres	Yield	T Yield
00	0.0	0.0	0.0	56.0	00	0.0	0.0	0.0	36.0
01	0.0	0.0	0.0	0.0	01	0.0	0.0	0.0	0.0
02	0.0	0.0	0.0	Prior Yield	02	0.0	0.0	0.0	Prior Yield
03	0.0	0.0	0.0	63.0	03	0.0	0.0	0.0	33.0
04	0.0	0.0	56.0C	51.0	04	0.0	0.0	36.0T	36.0T
05	0.0	0.0	56.0C	56.0L	05	0.0	0.0	36.0T	36.0T
06	8473.3	123.0	69.0A	17.0A	06	0.0	0.0	36.0T	36.0T
07	0.0	0.0	0.0Z	56.0A	07	335.8	14.0	24.0A	0.0
08	8699.6	123.0	71.0A	0.0Z	08	0.0	0.0	0.0Z	0.0Z
Sub-Tots			63.0	YA 60%	Sub-Tots			33.0	33.0
09	0.0	0.0	0.0Z	51.0	09	0.0	0.0	0.0Z	0.0Z
Yield Total	# of Years	Rate Yield	Guar Yld	35.7	Yield Total	# of Years	Rate Yield	Guar Yld	23.1
63.0	44.1	46.0	35.7	<None>	33.0	33.0	33.0	23.1	<None>

Record Type A B C D E F Map/Risk <None> Remarks

**PRODUCTION, YIELD AND ACREAGE REPORT**  
**STONINGTON INSURANCE COMPANY**

Administered By: Agro National  
Policy #: KS-631-0988914-10

This is my:  Production Report

**Policyholder Information**

RENICK FARMS  
10502 6 ROAD  
INGALLS, KS 67853-9217  
Phone: (620)855-3820  
Entity Type: P

**Agency/Agent Information**

WESTERN KANSAS INSURANCE SERVICES  
PO BOX 1142  
310 COURT STREET  
SCOTT CITY, KS 67871  
Phone: (620)872-5866 Code: 954223

Page 6 of 8

**APH Computation for**

Crop Year: 2010  
State: 20-KANSAS  
County: 069-GRAY  
Print Date: 08/05/2010  
CSR: E/lice B

**Plan Level Options**

WHEAT 70% RHYA 100%

Unit #	Crop	WHEAT	Unit #	Crop	WHEAT	Unit #	Crop	WHEAT	Unit #	Crop	WHEAT			
Practice SF	County	069-GRAY	Practice SF	County	069-GRAY	Practice SF	County	069-GRAY	Practice SF	County	069-GRAY			
Type/Class/Etc.	NTS	FSA # 3513	Type/Class/Etc.	NTS	FSA # 3513	Type/Class/Etc.	NTS	FSA # 3513	Type/Class/Etc.	NTS	FSA # 3513			
Twp / Range	Section(s)		Twp / Range	Section(s)		Twp / Range	Section(s)		Twp / Range	Section(s)				
00119	025S 030W 35	688	00120	025S 030W 36	911	00121	026S 029W 6	X	00122	026S 029W 20	X			
Farm Name			Farm Name			Farm Name			Farm Name					
Other Entities			Other Entities			Other Entities			Other Entities					
Class #			Class #			Class #			Class #					
Processor # / Name and/or # of Trees or Vines			Processor # / Name and/or # of Trees or Vines			Processor # / Name and/or # of Trees or Vines			Processor # / Name and/or # of Trees or Vines					
Yr	Production	Acres	Yield	T Yield	Yr	Production	Acres	Yield	T Yield	Yr	Production	Acres	Yield	T Yield
00	0.0	0.0	0.0	36.0	00	0.0	0.0	0.0	46.0	00	0.0	0.0	0.0	36.0
01	0.0	0.0	0.0	0.0	01	0.0	0.0	0.0	0.0	01	0.0	0.0	0.0	0.0
02	0.0	0.0	0.0	0.0	02	0.0	0.0	0.0	0.0	02	0.0	0.0	0.0	0.0
03	0.0	0.0	0.0	0.0	03	0.0	0.0	0.0	0.0	03	0.0	0.0	0.0	0.0
04	0.0	0.0	0.0	36.0T	04	0.0	0.0	0.0	0.0	04	0.0	0.0	0.0	0.0
05	0.0	0.0	0.0	36.0T	05	0.0	0.0	0.0	0.0	05	0.0	0.0	0.0	0.0
06	0.0	0.0	0.0	36.0T	06	0.0	0.0	0.0	53.0C	06	0.0	0.0	0.0	36.0T
07	416.3	40.0	10.0A	0.0	07	659.3	44.0	15.0A	0.0	07	0.0	0.0	0.0	36.0T
08	0.0	0.0	0.0Z	0.0Z	08	0.0	0.0	0.0Z	53.0C	08	0.0	0.0	0.0	36.0T
Sub-Tots	0.0	0.0	0.0Z	32.0	Sub-Tots	0.0	0.0	0.0Z	53.0C	Sub-Tots	0.0	0.0	0.0	36.0T
Yield Total	# of Years	Rate Yield	Guar Yield	YA 60%	Yield Total	# of Years	Rate Yield	Guar Yield	YA 60%	Yield Total	# of Years	Rate Yield	Guar Yield	YA 60%
30.0		30.0	22.4		31.0		31.0	22.4		53.0		53.0	37.1	
Record Type A B C D E F Map/Risk AAA			Record Type A B C D E F Map/Risk AAA			Record Type A B C D E F Map/Risk AAA			Record Type A B C D E F Map/Risk AAA			Record Type A B C D E F Map/Risk AAA		
Remarks			Remarks			Remarks			Remarks			Remarks		
Plant Acres	Plant Date	Int %	Plant Acres	Plant Date	Int %	Plant Acres	Plant Date	Int %	Plant Acres	Plant Date	Int %	Plant Acres	Plant Date	Int %
1	0	0	1	0	0	1	0	0	1	0	0	1	0	0

**PRODUCTION, YIELD AND ACREAGE REPORT**  
**STONINGTON INSURANCE COMPANY**

Administered By: Agro National  
Policy #: KS-631-0988914-10

This is my:  Production Report

Multiple Peril Crop Insurance

Page 7 of 8

**Policyholder Information**

RENICK FARMS  
10502 6 ROAD  
INGALLS, KS 67853-9217

Phone: (620)855-3820  
Entity Type: P

**Agency/Agent Information**

WESTERN KANSAS INSURANCE SERVICES  
PO BOX 1142  
310 COURT STREET  
SCOTT CITY, KS 67871

Code: 954223

**APH Computation for**

Crop Year: 2010  
State  
20-KANSAS  
County  
069-GRAY

Print Date: 08/05/2010  
CSR: E'lise B

**Crop**

WHEAT

**Plan**

RA

**Level**

70%

**Options**

FHYA

**Price %**

100%

Unit #	Crop	WHEAT	County	069-GRAY	Unit #	Crop	WHEAT	County	069-GRAY
Practice SE	County	FSA #	3406	Practice	County	FSA #	3406	Practice	County
Type/Class/Etc.	NTS	Section(s)	X	Type/Class/Etc.	NTS	Section(s)	X	Type/Class/Etc.	NTS
Twp / Range	026S 028W 2	Section(s)	X	Twp / Range	026S 028W 2	Section(s)	X	Twp / Range	026S 028W 2
<p>Farm Name: Ronnie Burns</p> <p>Other Entities: Ronnie Burns</p> <p>Class #</p> <p>Processor # / Name and/or # of Trees or Vines</p>									
Yr	Production	Acres	Yield	T Yield	Yr	Production	Acres	Yield	T Yield
00	0.0	0.0	0.0	36.0	00	0.0	0.0	0.0	36.0
01	0.0	0.0	0.0	Prior Yield	01	0.0	0.0	0.0	Prior Yield
02	0.0	0.0	0.0	45.0	02	0.0	0.0	0.0	45.0
03	0.0	0.0	36.0T	Yield	03	0.0	0.0	36.0T	Yield
04	0.0	0.0	36.0T	45.0	04	0.0	0.0	36.0T	45.0
05	3414.9	60.0	57.0A	Yield	05	3414.9	60.0	57.0A	Yield
06	0.0	0.0	0.0Z	Floor	06	0.0	0.0	0.0Z	Floor
07	3121.0	60.9	51.0A	0.0	07	3121.0	60.9	51.0A	0.0
08	0.0	0.0	0.0Z	Approved Yield	08	0.0	0.0	0.0Z	Approved Yield
Sub-Totals	0.0	0.0	0.0Z	45.0	Sub-Totals	0.0	0.0	0.0Z	45.0
Yield Total	# of Years	Rate Yield	45.0	Guar Yield	Yield Total	# of Years	Rate Yield	45.0	Guar Yield
				31.5					31.5
<p>Record Type A B C D E F Map/Risk AAA</p> <p>Remarks</p>									



Agro National Inc.  
300 West Broadway, Suite 500  
Council Bluffs, IA 51503  
Tel: (712) 256-0968

Print Date 09/05/10

STONINGTON INSURANCE COMPANY  
Multiple Peril Crop Insurance

Production, Yield And Acreage Report  
RENICK FARMS

Administered By: Agro National  
Policy Number KS-631-0988914-10  
Page 8 of 8

**COLLECTION OF INFORMATION AND DATA (PRIVACY ACT) STATEMENT**

Agents, Loss Adjusters and Policyholders

The following statements are made in accordance with the Privacy Act of 1974 (5 U.S.C. 552a); The Risk Management Agency (RMA) is authorized by the Federal Crop Insurance Act (7 U.S.C. 1501-1524) or other Acts, and the regulations promulgated thereunder, to solicit the information requested on documents established by RMA or by approved insurance providers (AIPs) that have been approved by the Federal Crop Insurance Corporation (FCIC) to deliver Federal crop insurance. The information is necessary for AIPs and RMA to operate the Federal crop insurance program, determine program eligibility, conduct statistical analysis, and ensure program integrity. Information provided herein may be furnished to other Federal, State, or local agencies, as required or permitted by law, law enforcement agencies, courts or adjudicative bodies, foreign agencies, magistrate, administrative tribunal, AIP's contractors and cooperators, Comprehensive Information Management System (CHIMS), congressional offices, or entities under contract with RMA. For insurance agents, certain information may also be disclosed to the public to assist interested individuals in locating agents in a particular area. Disclosure of the information requested is voluntary. However, failure to correctly report the requested information may result in the rejection of this document by the AIP or RMA in accordance with the Standard Reinsurance Agreement between the AIP and FCIC, Federal regulations, or RMA-approved procedures and the denial of program eligibility or benefits derived therefrom. Also, failure to provide true and correct information may result in civil suit or criminal prosecution and the assessment of penalties or pursuit of other remedies.

Number of Trees/Vines \_\_\_\_\_

Processor: Number/Name \_\_\_\_\_

Land other county Yes  No

Required Inspection

**False Claims Statement**

The information I have furnished on this form is complete and accurate. I understand that any false or inaccurate information may result in the sanctions outlined in my policy and administrative, civil, and criminal sanctions under 18 U.S.C. 1006 and 1014, 7 U.S.C. 1506, 3 U.S.C. 3729 and 3730 and other federal statutes.

**RECORD TYPE**

A = Prod. Sold/Commercial storage B = Farm Stored/Record Blin  
Measurement C = Livestock Feeding Records D = Appraisal E = FSA  
Loan Record F = Other

**PRODUCTION CERTIFICATION STATEMENT**

I certify that to the best of my knowledge and belief all of the information on this form is correct. I also understand that failure to report completely and accurately may result in sanctions under my policy, including but not limited to avoidance of the policy, and in criminal or civil penalties (18 U.S.C. ? 1006 and ? 1014; 7 U.S.C. ? 1506; 31 U.S.C. ? 3729, ? 3730 and any other applicable federal statutes).

**NONDISCRIMINATION STATEMENT**

The U.S. Department of Agriculture (USDA) prohibits discrimination in all its programs and activities on the basis of race, color, national origin, age, disability, and where applicable, sex, marital status, familial status, parental status, religion, sexual orientation, genetic information, political beliefs, reprisal, or because all or part of an individual's income is derived from any public assistance program. (Not all prohibited bases apply to all programs.) Persons with disabilities who require alternative means for communication of program information (Braille, large print, audiotape, etc.) should contact USDA's TARGET Center at (202) 720-2600 (Voice and TDD).

To file a complaint of discrimination, write USDA, Director, Office of Civil Rights, 1400 Independence Avenue S.W., Washington, D.C. 20250-9410 or call (800) 795-3272 (voice) or (202) 720-6382 (TDD). USDA is an equal opportunity provider and employer.

Purpose for Signature (check one):  Acreage Report Certification  Production Report Certification

Insured Signature (RENICK FARMS) \_\_\_\_\_ Date \_\_\_\_\_

Agent Signature \_\_\_\_\_ Date \_\_\_\_\_ Agent Code \_\_\_\_\_

Purpose for Signature (check one):  Acreage Report Certification  Production Report Certification

Insured Signature (RENICK FARMS) \_\_\_\_\_ Date \_\_\_\_\_

Agent Signature \_\_\_\_\_ Date \_\_\_\_\_ Agent Code \_\_\_\_\_







Agro National Inc.  
300 West Broadway, Suite 500  
Council Bluffs, IA 51503  
Tel: (712) 258-0988

**PRODUCTION, YIELD AND ACREAGE REPORT**  
**STONINGTON INSURANCE COMPANY**

Administered By: Agro National  
Policy #: KS-631-0988916-10

This is my:  Production Report

**Policyholder Information**

RENICK FARMS  
10502 6 ROAD  
INGALLS, KS 67853-9217  
Phone: (620)855-3820  
Entity Type: P

Multiple Peril Crop Insurance

**Agency/Agent Information**

WESTERN KANSAS INSURANCE SERVICES  
PO BOX 1142  
310 COURT STREET  
SCOTT CITY, KS 67871  
Phone: (620)872-5866 Code: 954223

Page 2 of 3

APH Computation for  
Crop Year: 2010  
State  
20-KANSAS  
County  
055-FINNEY  
Print Date: 08/05/2010  
CSR:Elise B

Plan Level Options Price %  
RA 70% FHZA 100%

Unit #	Crop	WHEAT	Year	Crop	WHEAT	Plan	Level	Options	Price %
00105	WHEAT		2010	WHEAT		RA	70%	FHZA	100%

Unit #	Practice	County	FSA #	Section(s)	Unit #	Practice	County	FSA #	Section(s)
025S 031W 13	NTS	055-FINNEY	3513	22					

Farm Name  
Other Entities  
Class #

Processor # / Name and/or # of Trees or Vines

Yr	Production	Acres	Yield	T Yield	Yr	Production	Acres	Yield	T Yield
93	0.0	0.0	47.0T	47.0					
94	0.0	123.6	61.0A						
96	0.0	123.0	47.0A	Prior Yield					Prior Yield
97	0.0	31.0	4.0A	46.0					
04	0.0	0.0	0.0Z						
05	0.0	0.0	0.0Z						
06	0.0	0.0	0.0Z						
07	0.0	0.0	0.0Z						
08	0.0	0.0	0.0Z						
Sub-Totals	0.0	0.0	0.0Z	46.0					Approved Yield
Yield Total	# of Years	Rate Yield	40.0	YA 60%	Yield Total	# of Years	Rate Yield	Guar Yld	32.2

Record Type A B C D E F Map/Risk <None>

Remarks

Plant Acres	Plant Date	Int %	PP Acres	Yield Total	# of Years	Rate Yield	Guar Yld
				40.0		40.0	32.2

Record Type A B C D E F  
Required:  Field Review  Inspection



Agro National Inc.  
300 West Broadway, Suite 500  
Council Bluffs, IA 51503  
Tel: (712) 256-0988

Print Date 08/05/10

STONINGTON INSURANCE COMPANY  
Multiple Peril Crop Insurance

Production, Yield And Acreage Report  
RENICK FARMS

Administered By: Agro National  
Policy Number KS-631-0988916-10  
Page 3 of 3

**COLLECTION OF INFORMATION AND DATA (PRIVACY ACT) STATEMENT**

Agents, Loss Adjusters and Policyholders

The following statements are made in accordance with the Privacy Act of 1974 (5 U.S.C. 552a): The Risk Management Agency (RMA) is authorized by the Federal Crop Insurance Act (7 U.S.C. 1501-1524) or other Acts, and the regulations promulgated thereunder, to solicit the information requested on documents established by RMA or by approved insurance providers (AIPs) that have been approved by the Federal Crop Insurance Corporation (FCIC) to deliver Federal crop insurance. The information is necessary for AIPs and RMA to operate the Federal crop insurance program, determine program eligibility, conduct statistical analysis, and ensure program integrity. Information provided herein may be furnished to other Federal, State, or local agencies, as required or permitted by law, law enforcement agencies, courts or adjudicative bodies, foreign agencies, magistrate, administrative tribunal, AIP's contractors and cooperators, Comprehensive Information Management System (CIMS), congressional offices, or entities under contract with RMA. For insurance agents, certain information may also be disclosed to the public to assist interested individuals in locating agents in a particular area. Disclosure of the information requested is voluntary. However, failure to correctly report the requested information may result in the rejection of this document by the AIP or RMA in accordance with the Standard Reinsurance Agreement between the AIP and FCIC. Federal regulations, or RMA-approved procedures and the denial of program eligibility or benefits derived therefrom. Also, failure to provide true and correct information may result in civil suit or criminal prosecution and the assessment of penalties or pursuit of other remedies.

Number of Trees/Vines \_\_\_\_\_

Processor Number/Name \_\_\_\_\_

Land other county Yes  No

Required Inspection

**False Claims Statement**

The information I have furnished on this form is complete and accurate. I understand that any false or inaccurate information may result in the sanctions outlined in my policy and administrative, civil, and criminal sanctions under 18 U.S.C. 1006 and 1014; 7 U.S.C. 1506, 3 U.S.C. 3729 and 3730 and other federal statutes.

**RECORD TYPE**

A = Prod. Sold/Commercial storage B = Farm Stored/Record Bin  
Measurement C = Livestock Feeding Records D = Appraisal E = FSA  
Loan Record F = Other

**PRODUCTION CERTIFICATION STATEMENT**

I certify that to the best of my knowledge and belief all of the information on this form is correct. I also understand that failure to report completely and accurately may result in sanctions under my policy, including but not limited to voidance of the policy, and in criminal or civil penalties (18 U.S.C. ? 1006 and ? 1014; 7 U.S.C. ? 1506; 31 U.S.C. ? 3729, ? 3730 and any other applicable federal statutes).

**NONDISCRIMINATION STATEMENT**

The U.S. Department of Agriculture (USDA) prohibits discrimination in all its programs and activities on the basis of race, color, national origin, age, disability, and where applicable, sex, marital status, familial status, parental status, religion, sexual orientation, genetic information, political beliefs, reprisal, or because all or part of an individual's income is derived from any public assistance program. (Not all prohibited bases apply to all programs.) Persons with disabilities who require alternative means for communication of program information (Braille, large print, audiotape, etc.) should contact USDA's TARGET Center at (202) 720-2600 (Voice and TDD).

To file a complaint of discrimination, write USDA, Director, Office of Civil Rights, 1400 Independence Avenue S.W., Washington, D.C. 20250-9410 or call (800) 795-3272 (voice) or (202) 720-6382 (TDD). USDA is an equal opportunity provider and employer.

Purpose for Signature (check one)  Acreage Report Certification  Production Report Certification

Insured Signature (RENICK FARMS) \_\_\_\_\_ Date \_\_\_\_\_

Agent Signature \_\_\_\_\_ Date \_\_\_\_\_ Agent Code \_\_\_\_\_

Purpose for Signature (check one)  Acreage Report Certification  Production Report Certification

Insured Signature (RENICK FARMS) \_\_\_\_\_ Date \_\_\_\_\_

Agent Signature \_\_\_\_\_ Date \_\_\_\_\_ Agent Code \_\_\_\_\_



Agro National Inc.  
300 West Broadway, Suite 500  
Council Bluffs, IA 51503  
National Tel: (712) 258-0968

**PRODUCTION, YIELD AND ACREAGE REPORT**  
**STONINGTON INSURANCE COMPANY**

Administered By: Agro National  
Policy #: KS-631-0986271-10

This is my:  Production Report

Multiple Peril Crop Insurance

**Policyholder Information**

RENICK FARMS  
10502 6 ROAD  
INGALLS, KS 67853-9217

Phone: (620)855-3820  
Entity Type: P

**Agency/Agent Information**

WESTERN KANSAS INSURANCE SERVICES  
PO BOX 1142  
310 COURT STREET  
SCOTT CITY, KS 67871

Phone: (620)872-5866 Code: 954223

**APH Computation for**

Crop Year: 2010  
State: 20-KANSAS  
County: 069-GRAY  
069-GRAY

Print Date: 08/05/2010  
CSR: Elise B

**Plan** RA  
**Crop** CORN  
**Year** 2010  
**Options** BEFHYA

**Level** 75%  
**Price %** 100%

Unit # 00201 Crop CORN  
Practice I County 069-GRAY  
FSA # 3513

Twp / Range 025S 029W 19/30 Section(s) 2 10

Farm Name AAA HR Land

Unit # 00202 Crop CORN  
Practice I County 069-GRAY  
FSA # 3513

Twp / Range 025S 029W 19/30 Section(s) 2 10

Farm Name AAA HR Land

Unit # 00203 Crop CORN  
Practice I County 069-GRAY  
FSA # 3513

Twp / Range 025S 029W 31 Section(s) 11 13

Farm Name

Unit # 00204 Crop CORN  
Practice NI County 069-GRAY  
FSA # 105

Twp / Range 025S 029W 30 Section(s) 105  
025S 030W 23/24/25/26

Farm Name

Processor # / Name and/or # of Trees or Vines									
Yr	Production	Acres	Yield	T Yield	Yr	Production	Acres	Yield	T Yield
96	8061.0	53.1	152.0A	183.0	95	0.0	0.0	40.0T	40.0
97	57449.0	277.0	207.0A	183.0	96	0.0	0.0	40.0T	40.0
98	46814.0	227.0	206.0A	Prior	97	0.0	0.0	40.0T	Prior
99	44042.0	227.0	194.0A	Yield	98	7458.0	138.5	54.0A	Yield
00	56871.0	333.1	171.0A	182.0	03	0.0	0.0	0.0Z	52.0
01	52507.0	280.1	187.0A	Yield	05	0.0	0.0	0.0Z	Yield
06	1894.2	123.0	15.0A	Floor	06	0.0	0.0	0.0Z	Floor
07	52387.9	280.9	187.0A	0.0	07	0.0	0.0	0.0Z	0.0
08	33923.8	155.4	218.0A	Approved	08	0.0	0.0	0.0Z	Approved
Sub-Tots				Yield	Sub-Tots				Yield
09	23236.0	155.0	150.0A	178.0	09	0.0	0.0	0.0Z	44.0
Yield Total	# of Years	Rate Yield	Guar Yield	133.5	Yield Total	# of Years	Rate Yield	Guar Yield	33
		169.0	<None>				44.0		

Processor # / Name and/or # of Trees or Vines									
Yr	Production	Acres	Yield	T Yield	Yr	Production	Acres	Yield	T Yield
89	36668.0	246.8	149.0A	183.0	89	36668.0	246.8	149.0A	183.0
94	43111.0	253.4	170.0A	183.0	94	43111.0	253.4	170.0A	183.0
96	21206.0	115.0	184.0A	Prior	96	21206.0	115.0	184.0A	Prior
98	23237.0	123.0	189.0A	Yield	98	23237.0	123.0	189.0A	Yield
99	22408.0	123.0	182.0A	165.0	99	22408.0	123.0	182.0A	165.0
00	20232.0	123.0	164.0A	Yield	00	20232.0	123.0	164.0A	Yield
02	16545.0	123.0	135.0A	Floor	02	16545.0	123.0	135.0A	Floor
07	25965.7	123.0	211.0A	0.0	07	25965.7	123.0	211.0A	0.0
08	26435.2	241.0	110.0A	Approved	08	26435.2	241.0	110.0A	Approved
Sub-Tots				Yield	Sub-Tots				Yield
09	19329.3	123.0	157.0A	165.0	09	19329.3	123.0	157.0A	165.0
Yield Total	# of Years	Rate Yield	Guar Yield	123.8	Yield Total	# of Years	Rate Yield	Guar Yield	123.8
		165.0	<None>				165.0		

Processor # / Name and/or # of Trees or Vines									
Yr	Production	Acres	Yield	T Yield	Yr	Production	Acres	Yield	T Yield
97	3791.0	41.4	92.0A	40.0	97	3791.0	41.4	92.0A	40.0
98	11701.0	201.9	58.0A	40.0	98	11701.0	201.9	58.0A	40.0
00	1167.0	33.0	35.0A	Prior	00	1167.0	33.0	35.0A	Prior
03	0.0	0.0	0.0Z	Yield	03	0.0	0.0	0.0Z	Yield
04	0.0	0.0	0.0Z	59.0	04	0.0	0.0	0.0Z	59.0
05	0.0	0.0	0.0Z	Yield	05	0.0	0.0	0.0Z	Yield
06	0.0	0.0	0.0Z	Floor	06	0.0	0.0	0.0Z	Floor
07	0.0	0.0	0.0Z	0.0	07	0.0	0.0	0.0Z	0.0
08	0.0	0.0	0.0Z	Approved	08	0.0	0.0	0.0Z	Approved
Sub-Tots				Yield	Sub-Tots				Yield
09	464.3	86.5	5.0A	54.0	09	464.3	86.5	5.0A	54.0
Yield Total	# of Years	Rate Yield	Guar Yield	48.0	Yield Total	# of Years	Rate Yield	Guar Yield	48.0
		48.0	<None>				48.0		

Record Type A B C D E F Map/Risk AAA

Remarks

Qualify BE YES

Plant Acres, Date, Int %

Record Type A B C D E F Map/Risk AAA

Remarks

Qualify BE YES

Plant Acres, Date, Int %

Record Type A B C D E F Map/Risk AAA

Remarks

Qualify BE YES

Plant Acres, Date, Int %

Record Type A B C D E F Map/Risk AAA

Remarks

Qualify BE YES

Plant Acres, Date, Int %

Record Type A B C D E F Map/Risk AAA

Remarks

Qualify BE YES

Plant Acres, Date, Int %

**PRODUCTION, YIELD AND ACREAGE REPORT**  
**STONINGTON INSURANCE COMPANY**

Administered By: Agro Nat...  
Policy #: KS-631-0986271-10

This is my:		Production Report		Multiple Peril Crop Insurance		APH Computation for		Year		Crop		Plan		Level		Options		Price %			
Policyholder Information		Agency/Agent Information		Crop CORN		Crop CORN		Crop Year: 2010		CORN		RA		75%		BEFHYA		100%			
RENICK FARMS 10502 6 ROAD INGALLS, KS 67853-9217  Phone: (620)855-3820 Entity Type: P		WESTERN KANSAS INSURANCE SERVICES PO BOX 1142 310 COURT STREET SCOTT CITY, KS 67871  Phone: (620)872-5866 Code: 954223		Unit # 00205 Practice I County 069-GRAY FSA # 3513 Twp / Range 025S 030W 23/25/26 Section(s)		Unit # 00206 Practice I County 069-GRAY FSA # 3513 Twp / Range 025S 030W 34 Section(s)		Unit # 00207 Practice I County 069-GRAY FSA # 3513 Twp / Range 025S 030W 35 Section(s)		Unit # 00208 Practice I County 069-GRAY FSA # 3513 Twp / Range 025S 030W 36 Section(s)		COTIN GORG OATS SBEAN SNFLR SSORG		CRC CRC APH RA RA APH		75% 75% 75% 75% 75% 70%		YA YA YA FHYA FHYA YA		100% 100% 100% 100% 100% 100%	
Farm Name		Farm Name		Farm Name		Farm Name		Farm Name		Farm Name		Other Entities		Other Entities		Other Entities		Other Entities			
Other Entities		Other Entities		Other Entities		Other Entities		Other Entities		Other Entities		Class #		Class #		Class #		Class #			
Processor # / Name and/or # of Trees or Vines		Processor # / Name and/or # of Trees or Vines		Processor # / Name and/or # of Trees or Vines		Processor # / Name and/or # of Trees or Vines		Processor # / Name and/or # of Trees or Vines		Processor # / Name and/or # of Trees or Vines		Yr		Yr		Yr		Yr			
99	139968.0	736.4	190.0A	183.0	93	22657.0	120.0	189.0A	183.0	94	30029.0	123.0	244.0A	183.0	89	18803.0	125.6	150.0A	183.0		
00	172986.0	1001.6	173.0A	183.0	94	8555.7	122.0	70.0A	183.0	95	6386.0	125.0	51.0A	183.0	94	25121.0	127.8	197.0A	183.0		
01	72170.0	442.8	163.0A	183.0	95	22313.0	125.0	179.0A	183.0	99	27763.7	125.0	222.0A	183.0	97	26589.0	123.0	216.0A	183.0		
02	45942.6	338.0	136.0A	183.0	03	0.0	0.0	0.0Z	183.0	04	69330.9	369.0	188.0A	183.0	98	26063.0	123.0	213.0A	183.0		
04	12610.1	61.5	205.0A	179.0	04	22922.4	123.0	187.0A	165.0	05	0.0	0.0	0.0Z	183.0	99	26149.0	123.0	213.0A	183.0		
05	52306.6	256.5	204.0A	183.0	05	0.0	0.0	0.0Z	165.0	06	0.0	0.0	0.0Z	183.0	00	22340.0	123.0	182.0A	183.0		
06	485.9	61.5	8.0A	183.0	06	0.0	0.0	0.0Z	165.0	07	46018.9	246.0	187.0A	183.0	04	23652.1	123.0	192.0A	183.0		
07	57566.3	307.5	187.0A	183.0	07	0.0	0.0	0.0Z	165.0	08	0.0	0.0	0.0Z	183.0	07	23810.1	123.0	194.0A	183.0		
08	39280.1	184.5	213.0A	183.0	08	0.0	0.0	0.0Z	165.0	09	40797.3	246.0	166.0A	183.0	08	43298.5	246.0	176.0A	183.0		
Sub-Tots					Sub-Tots				165.0	Sub-Tots				185.0	Sub-Tots				192.0		
09	27847.7	195.0	143.0A	183.0	09	0.0	0.0	0.0Z	165.0	09	40797.3	246.0	166.0A	183.0	09	0.0	0.0	0.0Z	192.0		
Yield Total					Yield Total				156.0	Yield Total				176.0	Yield Total				192.0		
# of Years					# of Years				1.29	# of Years				1.38.8	# of Years				1.44		
Rate Yield					Rate Yield				1.56.0	Rate Yield				1.76.0	Rate Yield				1.92.0		
Guar Yield					Guar Yield				1.23.8	Guar Yield				1.38.8	Guar Yield				1.44		
YA 60%					YA 60%				1.23.8	YA 60%				1.38.8	YA 60%				1.44		
Record Type A B C D E F Map/Risk <None>		Record Type A B C D E F Map/Risk <None>		Record Type A B C D E F Map/Risk <None>		Record Type A B C D E F Map/Risk <None>		Record Type A B C D E F Map/Risk <None>		Record Type A B C D E F Map/Risk <None>		Record Type A B C D E F Map/Risk <None>		Record Type A B C D E F Map/Risk <None>		Record Type A B C D E F Map/Risk <None>		Record Type A B C D E F Map/Risk <None>			
Remarks		Remarks		Remarks		Remarks		Remarks		Remarks		Remarks		Remarks		Remarks		Remarks			
Plant Acres					Plant Acres					Plant Acres					Plant Acres						
PP Acres					PP Acres					PP Acres					PP Acres						
Int %					Int %					Int %					Int %						
Qualify BE					Qualify BE					Qualify BE					Qualify BE						
YES					YES					YES					YES						



Agro National Inc.  
300 West Broadway, Suite 500  
Council Bluffs, IA 51503  
National Tel: (712) 256-0968

# PRODUCTION, YIELD AND ACREAGE REPORT STONINGTON INSURANCE COMPANY

Administered By: Agro National  
Policy #: KS-631-0986271-10

## This is my: Production Report

### Policyholder Information

RENICK FARMS  
10502 6 ROAD  
INGALLS, KS 67853-9217  
  
Phone: (620)855-3820  
Entity Type: P

## Multiple Peril Crop Insurance

### Agency/Agent Information

WESTERN KANSAS INSURANCE SERVICES  
PO BOX 1142  
310 COURT STREET  
SCOTT CITY, KS 67871  
  
Phone: (620)872-5866  
Code: 954223

## APH Computation for

Crop Year: 2010  
State  
20-KANSAS  
County  
069-GRAY  
Print Date: 08/05/2010  
CSR: E/ise B

## Options

Plan	RA	75%	BEFHYA	100%
Crop	CORN	75%	YA	100%
Year	COTVN	75%	YA	100%
Options	GSORG	75%	YA	100%
Options	OATS	75%	YA	100%
Options	SBEAN	75%	FHYA	100%
Options	SNFLR	75%	FHYA	100%
Options	SSORG	70%	YA	100%

Unit # 00209	Crop CORN	Unit # 00210	Crop CORN	Unit # 00211	Crop CORN	Unit # 00212	Crop CORN
Practice I	County 069-GRAY	Practice I	County 069-GRAY	Practice I	County 069-GRAY	Practice I	County 069-GRAY
Type/Class/Etc. GSG	FSA # 3512, 3057	Type/Class/Etc. GSG	FSA # 3513	Type/Class/Etc. GSG	FSA # 3353	Type/Class/Etc. GSG	FSA # 3353
Twp / Range	026S 029W 20	Twp / Range	026S 030W 1	Twp / Range	026S 029W 4	Twp / Range	026S 029W 6
Section(s)		Section(s)		Section(s)		Section(s)	

Farm Name	Farm Name	Farm Name	Farm Name
Other Entities	Other Entities	Other Entities	Other Entities
Class #	Class #	Class #	Class #

Processor # / Name and/or # of Trees or Vines	Processor # / Name and/or # of Trees or Vines	Processor # / Name and/or # of Trees or Vines	Processor # / Name and/or # of Trees or Vines
---	---	---	---

Yr	Production	Acres	Yield	T Yield	Yr	Production	Acres	Yield	T Yield	Yr	Production	Acres	Yield	T Yield
84	40324.0	250.0	161.0A	183.0	00	0.0	0.0	0.0	183.0	00	0.0	0.0	0.0	183.0
85	30358.0	220.0	138.0A	183.0	01	0.0	0.0	0.0	183.0	01	0.0	0.0	0.0	183.0
86	68775.0	308.1	217.0A	Prior	02	0.0	0.0	183.0T	Prior	02	0.0	0.0	0.0	Prior
87	68770.0	376.1	183.0A	Yield	03	0.0	0.0	183.0T	Yield	03	0.0	0.0	0.0	Yield
88	0.0	0.0	0.0Z	169.0	04	0.0	62.5	0.0A	157.0	04	0.0	0.0	0.0	193.0
89	18016.4	123.0	146.0A	Yield	05	31143.3	206.5	151.0A	Yield	05	22266.0	123.0	181.0A	Yield
90	0.0	0.0	0.0Z	164.0	06	94365.0	492.0	192.0A	Floor	06	0.0	0.0	0.0Z	Floor
91	0.0	0.0	0.0Z	0.0	07	70441.0	369.0	191.0A	0.0	07	26525.0	124.7	213.0A	0.0
92	0.0	0.0	0.0Z	164.0	08	71019.0	359.0	198.0A	Approved	08	59819.3	302.5	198.0A	Approved
Sub-Tots				164.0	Sub-Tots				155.0	Sub-Tots				184.0
09	33843.0	240.0	141.0A	164.0	09	68661.7	361.0	190.0A	155.0	09	61068.0	423.0	144.0A	184.0
Yield Total	# of Years	Rate Yield	Guar Yield	164.0	Yield Total	# of Years	Rate Yield	Guar Yield	116.3	Yield Total	# of Years	Rate Yield	Guar Yield	138
		164.0	123				129.0	116.3				184.0	138	

Record Type A B C D E F Map/Risk <None>	Record Type A B C D E F Map/Risk <None>	Record Type A B C D E F Map/Risk <None>	Record Type A B C D E F Map/Risk <None>
---	---	---	---

Remarks	Remarks	Remarks	Remarks
Qualify BE	Qualify BE	Qualify BE	Qualify BE
YES <input type="checkbox"/>	YES <input type="checkbox"/>	YES <input type="checkbox"/>	YES <input type="checkbox"/>
Plant Acres	Plant Acres	Plant Acres	Plant Acres
Date	Date	Date	Date
Int %	Int %	Int %	Int %
1 0 0 0	1 0 0 0	1 0 0 0	1 0 0 0

**PRODUCTION, YIELD AND ACREAGE REPORT**  
**STONINGTON INSURANCE COMPANY**

Administered By: Agro National  
Policy #: KS-631-0986271-10

This is my:  Production Report

Multiple Peril Crop Insurance

Page 4 of 14

<p><b>Policyholder Information</b></p> <p>RENICK FARMS 10502 6 ROAD INGALLS, KS 67853-9217</p> <p>Phone: (620)855-3820 Entity Type: P</p>		<p><b>Agency/Agent Information</b></p> <p>WESTERN KANSAS INSURANCE SERVICES PO BOX 1142 310 COURT STREET SCOTT CITY, KS 67871</p> <p>Phone: (620)872-5866 Code: 954223</p>		<p><b>APH Computation for</b></p> <p>Crop Year: 2010 State: 20-KANSAS County: 069-GRAY</p> <p>Print Date: 08/05/2010 CSR:Elise B</p>		<p><b>Year</b></p> <p>2010 2010 2010 2010 2010 2010</p>		<p><b>Crop</b></p> <p>CORN COTTN GSGR OATS SBEAN SNFLR SSORG</p>		<p><b>Plan</b></p> <p>RA CRC CRC APH RA RA APH</p>		<p><b>Level</b></p> <p>75% 75% 75% 75% 75% 75% 70%</p>		<p><b>Options</b></p> <p>BEFHYA YA YA FHYA FHYA YA</p>		<p><b>Price %</b></p> <p>100% 100% 100% 100% 100% 100% 100%</p>	
---	--	--	--	--	--	---	--	--	--	--	--	--	--	--	--	---	--

Unit # 00212	Crop CORN	Unit # 00213	Crop CORN	Unit # 00101	Crop COTTN	Unit # 00102	Crop COTTN
Practice NI	County 069-GRAY	Practice NI	County 069-GRAY	Practice I	County 069-GRAY	Practice I	County 069-GRAY
Type/Class/Etc. GSG	FSA # 3513	Type/Class/Etc. GSG	FSA # 3513	Type/Class/Etc. NTS	FSA # 3513	Type/Class/Etc. NTS	FSA # 3513

Twp / Range	Section(s)	Yr	Production	Acres	Yield	T Yield
025S 029W 31	11	00	0.0	0.0	0.0	56.0
025S 030W 36	13	01	0.0	0.0	0.0	56.0
		02	0.0	0.0	0.0	Prior
		03	0.0	0.0	0.0	Yield
		04	0.0	0.0	0.0	56.0
		05	0.0	0.0	0.0	Yield
		06	0.0	0.0	56.0C	Floor
		07	0.0	0.0	56.0C	0.0
		08	0.0	0.0	56.0C	Approved
		Sub-Totals	17.0	85.0	0.0A	YA 60%
		Yield Total			42.0	38.3
		Rate Yield			42.0	38.3
		Guar Yield			42.0	38.3

Farm Name

Other Entities

Class #

Processor # / Name and/or # of Trees or Vines

Yr	Production	Acres	Yield	T Yield
00	0.0	0.0	0.0	56.0
01	0.0	0.0	0.0	56.0
02	0.0	0.0	0.0	Prior
03	0.0	0.0	0.0	Yield
04	0.0	0.0	0.0	56.0
05	0.0	0.0	0.0	Yield
06	0.0	0.0	56.0C	Floor
07	0.0	0.0	56.0C	0.0
08	0.0	0.0	56.0C	Approved
Sub-Totals	17.0	85.0	0.0A	YA 60%
Yield Total			42.0	38.3
Rate Yield			42.0	38.3
Guar Yield			42.0	38.3

Yr	Production	Acres	Yield	T Yield
00	0.0	0.0	0.0	450.0
01	0.0	0.0	450.0T	450.0
02	0.0	0.0	450.0T	Prior
03	76207.0	123.0	620.0A	Yield
04	0.0	0.0	0.0Z	463.0
05	0.0	0.0	0.0Z	Yield
06	40821.0	123.0	332.0A	Floor
07	0.0	0.0	0.0Z	0.0
08	0.0	0.0	0.0Z	Approved
Sub-Totals	76207.0	123.0	620.0A	YA 60%
Yield Total			463.0	34.7
Rate Yield			463.0	34.7
Guar Yield			463.0	34.7

Yr	Production	Acres	Yield	T Yield
00	0.0	0.0	0.0	450.0
01	0.0	0.0	450.0T	450.0
02	0.0	0.0	450.0T	Prior
03	16873.0	44.5	379.0A	Yield
04	0.0	0.0	0.0Z	507.0
05	0.0	0.0	0.0Z	Yield
06	210766.0	280.9	750.0A	Floor
07	0.0	0.0	0.0Z	0.0
08	0.0	0.0	0.0Z	Approved
Sub-Totals	16873.0	44.5	379.0A	YA 60%
Yield Total			463.0	34.7
Rate Yield			463.0	34.7
Guar Yield			463.0	34.7

Farm Name

Other Entities

Class #

Processor # / Name and/or # of Trees or Vines

Yr	Production	Acres	Yield	T Yield
00	0.0	0.0	0.0	450.0
01	0.0	0.0	450.0T	450.0
02	0.0	0.0	450.0T	Prior
03	76207.0	123.0	620.0A	Yield
04	0.0	0.0	0.0Z	463.0
05	0.0	0.0	0.0Z	Yield
06	40821.0	123.0	332.0A	Floor
07	0.0	0.0	0.0Z	0.0
08	0.0	0.0	0.0Z	Approved
Sub-Totals	76207.0	123.0	620.0A	YA 60%
Yield Total			463.0	34.7
Rate Yield			463.0	34.7
Guar Yield			463.0	34.7

Farm Name

Other Entities

Class #

Processor # / Name and/or # of Trees or Vines

Yr	Production	Acres	Yield	T Yield
00	0.0	0.0	0.0	450.0
01	0.0	0.0	450.0T	450.0
02	0.0	0.0	450.0T	Prior
03	76207.0	123.0	620.0A	Yield
04	0.0	0.0	0.0Z	463.0
05	0.0	0.0	0.0Z	Yield
06	40821.0	123.0	332.0A	Floor
07	0.0	0.0	0.0Z	0.0
08	0.0	0.0	0.0Z	Approved
Sub-Totals	76207.0	123.0	620.0A	YA 60%
Yield Total			463.0	34.7
Rate Yield			463.0	34.7
Guar Yield			463.0	34.7





**PRODUCTION, YIELD AND ACREAGE REPORT**  
**STONINGTON INSURANCE COMPANY**

Administered By: Agro National  
Policy #: **KS-631-0986271-10**

This is my:  Production Report

Multiple Peril Crop Insurance

Page 6 of 14

**Policyholder Information**

RENICK FARMS  
10502 6 ROAD  
INGALLS, KS 67853-9217

Phone: (620)855-3820  
Entity Type: P

**Agency/Agent Information**

WESTERN KANSAS INSURANCE SERVICES  
PO BOX 1142  
310 COURT STREET  
SCOTT CITY, KS 67871

Phone: (620)872-5866  
Code: 954223

**APH Computation for**

Crop Year: 2010  
State: 20-KANSAS  
County: 069-GRAY  
069-GRAY

Year: 2010  
2010  
2010  
2010  
2010  
2010  
2010

Crop: CORN  
COTTN  
GSSORG  
OATS  
SBEAN  
SNFLR  
SSORG

Plan: RA  
CRC  
CRC  
APH  
RA  
RA  
APH

Level: 75%  
75%  
75%  
75%  
75%  
75%  
70%

Options: BEFYA  
YA  
YA  
YA  
FYHA  
FYHA  
YA

Price %: 100%  
100%  
100%  
100%  
100%  
100%  
100%

Print Date: 08/05/2010  
CSR:Elise B

Unit # 00304	Crop GSSORG	Unit # 00305	Crop GSSORG	Unit # 00308	Crop GSSORG	Unit # 00309	Crop GSSORG
Practice I	County 069-GRAY	Practice NI	County 069-GRAY	Practice NI	County 069-GRAY	Practice NI	County 069-GRAY
Type/Class/Etc. NTS	FSA #	Type/Class/Etc. NTS	FSA #	Type/Class/Etc. NTS	FSA #	Type/Class/Etc. NTS	FSA #
Twp / Range 025S 030W 23	Section(s) /	Twp / Range 025S 030W 23	Section(s) /	Twp / Range 026S 030W 1	Section(s) /	Twp / Range 025S 030W 31/34/35/36	Section(s) /
Farm Name	AAA HR Land	Farm Name	AAA HR Land	Farm Name	AAA HR Land	Farm Name	AAA HR Land

Yr	Production	Acres	Yield	T Yield
93	0.0	0.0	100.0T	100.0
94	0.0	0.0	100.0T	100.0
95	0.0	0.0	100.0T	Prior
96	3078.0	41.9	73.0A	Yield
03	0.0	0.0	0.0Z	95.0
05	0.0	0.0	0.0Z	Yield
06	0.0	0.0	0.0Z	Floor
07	0.0	0.0	0.0Z	0.0
08	0.0	0.0	0.0Z	Approved
Sub-Tots	0.0	0.0	0.0Z	Yield
09				93.0
Yield Total	# of Years	Rate Yield	Guar Yield	
93.0		93.0	69.8	

Yr	Production	Acres	Yield	T Yield
96	2817.0	149.5	19.0A	52.0
97	7595.0	104.8	72.0A	52.0
01	977.0	60.0	16.0A	Prior
03	0.0	0.0	0.0Z	Yield
04	0.0	0.0	0.0Z	43.0
05	0.0	0.0	0.0Z	Yield
06	0.0	0.0	0.0Z	Floor
07	0.0	0.0	0.0Z	42.0
08	648.0	48.0	14.0A	Approved
Sub-Tots	0.0	0.0	0.0Z	Yield
09				42.0
Yield Total	# of Years	Rate Yield	Guar Yield	
30.0		30.0	31.5	

Yr	Production	Acres	Yield	T Yield
99	0.0	0.0	0.0	52.0T
00	0.0	0.0	0.0	52.0T
01	600.0	16.0	38.0A	Prior
03	0.0	0.0	0.0Z	Yield
04	0.0	0.0	0.0Z	51.0
05	0.0	0.0	0.0Z	Yield
06	0.0	0.0	0.0Z	Floor
07	0.0	0.0	0.0Z	0.0
08	729.3	16.0	46.0A	Approved
Sub-Tots	0.0	0.0	0.0Z	Yield
09				47.0
Yield Total	# of Years	Rate Yield	Guar Yield	
47.0		47.0	35.3	

Yr	Production	Acres	Yield	T Yield
00	0.0	0.0	0.0	0.0
01	0.0	0.0	0.0	0.0
02	0.0	0.0	0.0	0.0
03	0.0	0.0	0.0	52.0T
04	0.0	0.0	0.0	52.0T
05	0.0	143.0	0.0A	Yield
06	0.0	0.0	0.0Z	Floor
07	0.0	0.0	0.0Z	42.0
08	2017.1	126.5	16.0A	Approved
Sub-Tots	0.0	0.0	0.0Z	Yield
09				42.0
Yield Total	# of Years	Rate Yield	Guar Yield	
30.0		30.0	31.5	

Yr	Production	Acres	Yield	T Yield
93	0.0	0.0	100.0T	100.0
94	0.0	0.0	100.0T	100.0
95	0.0	0.0	100.0T	Prior
96	3078.0	41.9	73.0A	Yield
03	0.0	0.0	0.0Z	95.0
05	0.0	0.0	0.0Z	Yield
06	0.0	0.0	0.0Z	Floor
07	0.0	0.0	0.0Z	0.0
08	0.0	0.0	0.0Z	Approved
Sub-Tots	0.0	0.0	0.0Z	Yield
09				93.0
Yield Total	# of Years	Rate Yield	Guar Yield	
93.0		93.0	69.8	

Yr	Production	Acres	Yield	T Yield
96	2817.0	149.5	19.0A	52.0
97	7595.0	104.8	72.0A	52.0
01	977.0	60.0	16.0A	Prior
03	0.0	0.0	0.0Z	Yield
04	0.0	0.0	0.0Z	43.0
05	0.0	0.0	0.0Z	Yield
06	0.0	0.0	0.0Z	Floor
07	0.0	0.0	0.0Z	42.0
08	648.0	48.0	14.0A	Approved
Sub-Tots	0.0	0.0	0.0Z	Yield
09				42.0
Yield Total	# of Years	Rate Yield	Guar Yield	
30.0		30.0	31.5	

Yr	Production	Acres	Yield	T Yield
00	0.0	0.0	0.0	0.0
01	0.0	0.0	0.0	0.0
02	0.0	0.0	0.0	0.0
03	0.0	0.0	0.0	52.0T
04	0.0	0.0	0.0	52.0T
05	0.0	143.0	0.0A	Yield
06	0.0	0.0	0.0Z	Floor
07	0.0	0.0	0.0Z	42.0
08	2017.1	126.5	16.0A	Approved
Sub-Tots	0.0	0.0	0.0Z	Yield
09				42.0
Yield Total	# of Years	Rate Yield	Guar Yield	
30.0		30.0	31.5	

Plant Acres	PP Acres	Int %	Date
		1	

Plant Acres	PP Acres	Int %	Date
		1	

Plant Acres	PP Acres	Int %	Date
		1	

Record Type A B C D E F Map/Risk <None>

Record Type A B C D E F Map/Risk <None>

Record Type A B C D E F Map/Risk AAA



Agro National Inc.  
300 West Broadway, Suite 500  
Council Bluffs, IA 51503  
National Tel: (712) 256-0968

**PRODUCTION, YIELD AND ACREAGE REPORT**  
**STONINGTON INSURANCE COMPANY**

Administered By: Agro National  
Policy #: KS-631-0986271-10

This is my:  Production Report

**Policyholder Information**

RENICK FARMS  
10502 6 ROAD  
INGALLS, KS 67853-9217

Phone: (620)855-3820  
Entity Type: P

**Agency/Agent Information**

WESTERN KANSAS INSURANCE SERVICES  
PO BOX 1142  
310 COURT STREET  
SCOTT CITY, KS 67871

Phone: (620)872-5866 Code: 954223

**Multiple Peril Crop Insurance**

APH Computation for

Crop Year: 2010  
State  
20-KANSAS  
County  
069-GRAY

Print Date: 08/05/2010  
CSR:Elise B

**Page 7 of 14**

Year	Crop	Plan	Level	Options	Price %
2010	CORN	RA	75%	BEFHYA	100%
2010	COTTN	CRC	75%	YA	100%
2010	GSORG	CRC	75%	YA	100%
2010	OATS	APH	75%	YA	100%
2010	SBEAN	RA	75%	FHYA	100%
2010	SNFLR	RA	75%	FHYA	100%
2010	SSORG	APH	70%	YA	100%

Unit #	Crop	Unit #	Crop	Unit #	Crop
00311	GSORG	00314	GSORG	00315	GSORG
Practice NI	County 069-GRAY	Practice NI	County 069-GRAY	Practice I	County 069-GRAY

Type/Class/Etc.	NTS	FSA #	Section(s)	Type/Class/Etc.	NTS	FSA #	Section(s)
025S 030W	30	3513		026S 029W	4	3353	

Twp / Range	Section(s)	Twp / Range	Section(s)	Twp / Range	Section(s)
025S 030W	30	026S 029W	4	026S 029W	25
					26

Farm Name	AAA HR Land	Farm Name	AAA HR Land	Farm Name	00316
AAA HR Land		AAA HR Land			County 069-GRAY

Other Entities	Other Entities	Other Entities

Class #	Processor # / Name and/or # of Trees or Vines	Class #	Processor # / Name and/or # of Trees or Vines	Class #	Processor # / Name and/or # of Trees or Vines

Yr	Production	Acres	Yield	T Yield	Yr	Production	Acres	Yield	T Yield
00	0.0	0.0	0.0	52.0	00	0.0	0.0	0.0	52.0
01	0.0	0.0	0.0	0.0	01	0.0	0.0	0.0	0.0
02	0.0	0.0	0.0	Prior	02	0.0	0.0	0.0	Prior
03	0.0	0.0	0.0	Yield	03	0.0	0.0	0.0	Yield
04	0.0	0.0	0.0	49.0	04	0.0	0.0	0.0	52.0
05	0.0	16.0	0.0A	Yield	05	0.0	0.0	0.0	52.0T
06	0.0	0.0	0.02	Floor	06	0.0	0.0	0.0	52.0T
07	0.0	0.0	0.02	0.0	07	0.0	0.0	0.0	52.0T
08	0.0	0.0	0.02	Approved	08	3470.9	125.0	28.0A	44.0A
Sub-Totals			47.0	Yield	Sub-Totals			87.0	Yield
09	0.0	0.0	0.0Z	YA 60%	09	12545.2	145.0	97.0A	50.0
Yield Total	# of Years	Rate Yield	Guar Yield		Yield Total	# of Years	Rate Yield	Guar Yield	
39.0		39.0	35.3		65.3		65.3	37.5	

Yield Total	# of Years	Rate Yield	Guar Yield
39.0		39.0	35.3

Yield Total	# of Years	Rate Yield	Guar Yield
65.3		65.3	37.5

Yield Total	# of Years	Rate Yield	Guar Yield
46.0		46.0	35.3

Yield Total	# of Years	Rate Yield	Guar Yield
145.0		145.0	65.3

Yield Total	# of Years	Rate Yield	Guar Yield
1192.6		1192.6	27.0

Sub-Totals	Yield	Rate Yield	Guar Yield
47.0	47.0	46.0	35.3
87.0	87.0	85.0	65.3
50.0	50.0	50.0	37.5

Record Type	A	B	C	D	E	F	Map/Risk	Remarks
AAA								
AAA								
AAA								

Plant Acres	Plant Date	Plant Acres	Plant Date	Plant Acres	Plant Date



Agro National Inc.  
300 West Broadway, Suite 500  
Council Bluffs, IA 51503  
NATIONAL TEL: (712) 256-0968

**PRODUCTION, YIELD AND ACREAGE REPORT**  
**STONINGTON INSURANCE COMPANY**

Administered By: Agro National  
Policy #: KS-631-0986271-10

This is my:  Production Report

Multiple Peril Crop Insurance

Page 8 of 14

<b>Policyholder Information</b>		<b>Agency/Agent Information</b>		<b>APH Computation for</b>	
RENICK FARMS 10502 6 ROAD INGALLS, KS 67853-9217 Phone: (620)855-3820 Entity Type: P		WESTERN KANSAS INSURANCE SERVICES PO BOX 1142 310 COURT STREET SCOTT CITY, KS 67871 Phone: (620)872-5866 Code: 954223		Crop Year: 2010 State 20-KANSAS County 069-GRAY 2010 2010 2010 2010 2010 2010 2010 2010	
Unit # 00317	Crop GSORG	Unit # 00318	Crop GSORG	Unit # 00400	Crop GSORG
Practice I	County 069-GRAY	Practice I	County 069-GRAY	Practice NI	County 069-GRAY
Type/Class/Etc. NTS	FSA #	Type/Class/Etc. NTS	FSA #	Type/Class/Etc. NTS	FSA #
026S 029W 20	25 26	025S 029W 19/30	10	026S 028W 2	3405
Section(s)		Section(s)		Section(s)	
					X

Farm Name		Farm Name		Farm Name	
Other Entities		Other Entities		Other Entities	
Class #		Class #		Class #	
Processor # / Name and/or # of Trees or Vines		Processor # / Name and/or # of Trees or Vines		Processor # / Name and/or # of Trees or Vines	
Yr	Production	Acres	Yield	T Yield	
00	0.0	0.0	0.0	100.0	
01	0.0	0.0	0.0	100.0	
02	0.0	0.0	0.0	Prior	
03	0.0	0.0	0.0	Yield	
04	0.0	0.0	0.0	102.0	
05	0.0	0.0	0.0	Yield	
06	0.0	0.0	0.0	100.0T	
07	0.0	0.0	0.0	100.0T	
08	17841.9	369.0	48.0A	Approved	
Sub-Tots				Yield	
09	0.0	0.0	0.02	90.0	
Yield Total	# of Years	Rate Yield	Guar Yld	YA 60%	
87.0		87.0	67.5		

Farm Name		Farm Name		Farm Name	
Other Entities		Other Entities		Other Entities	
Class #		Class #		Class #	
Processor # / Name and/or # of Trees or Vines		Processor # / Name and/or # of Trees or Vines		Processor # / Name and/or # of Trees or Vines	
Yr	Production	Acres	Yield	T Yield	
00	0.0	0.0	0.0	100.0	
01	0.0	0.0	0.0	100.0	
02	0.0	0.0	0.0	Prior	
03	0.0	0.0	0.0	Yield	
04	0.0	0.0	0.0	92.0	
05	0.0	0.0	0.0	Yield	
06	0.0	0.0	0.0	100.0T	
07	0.0	0.0	0.0	100.0T	
08	2310.8	61.5	38.0A	Approved	
Sub-Tots				Yield	
09	10721.4	123.0	87.0A	87.0	
Yield Total	# of Years	Rate Yield	Guar Yld	YA 60%	
81.0		81.0	65.3		

Farm Name		Farm Name		Farm Name	
Other Entities		Other Entities		Other Entities	
Class #		Class #		Class #	
Processor # / Name and/or # of Trees or Vines		Processor # / Name and/or # of Trees or Vines		Processor # / Name and/or # of Trees or Vines	
Yr	Production	Acres	Yield	T Yield	
00	0.0	0.0	0.0	100.0	
01	0.0	0.0	0.0	100.0	
02	0.0	0.0	0.0	Prior	
03	0.0	0.0	0.0	Yield	
04	0.0	0.0	0.0	92.0	
05	0.0	0.0	0.0	Yield	
06	0.0	0.0	0.0	100.0T	
07	0.0	0.0	0.0	100.0T	
08	736.4	60.9	12.0A	Approved	
Sub-Tots				Yield	
09	0.0	0.0	0.02	47.0	
Yield Total	# of Years	Rate Yield	Guar Yld	YA 60%	
42.0		42.0	35.3		

Farm Name		Farm Name		Farm Name	
Other Entities		Other Entities		Other Entities	
Class #		Class #		Class #	
Processor # / Name and/or # of Trees or Vines		Processor # / Name and/or # of Trees or Vines		Processor # / Name and/or # of Trees or Vines	
Yr	Production	Acres	Yield	T Yield	
00	0.0	0.0	0.0	52.0	
01	0.0	0.0	0.0	52.0	
02	0.0	0.0	0.0	Prior	
03	0.0	0.0	0.0	Yield	
04	0.0	0.0	0.0	49.0	
05	0.0	0.0	0.0	Yield	
06	0.0	0.0	0.0	52.0T	
07	0.0	0.0	0.0	52.0T	
08	0.0	0.0	0.0	Approved	
Sub-Tots				Yield	
09	0.0	0.0	0.02	47.0	
Yield Total	# of Years	Rate Yield	Guar Yld	YA 60%	
42.0		42.0	35.3		

Record Type	A	B	C	D	E	F	Map/Risk	<None>
Remarks								
Plant Acres								
PP Acres								
Int %								



Agro National Inc.  
300 West Broadway, Suite 500  
Council Bluffs, IA 51503  
Tel: (712) 256-0968

**PRODUCTION, YIELD AND ACREAGE REPORT**  
**STONINGTON INSURANCE COMPANY**

Administered By: Agro National  
Policy #: KS-631-0986271-10

**This is my:  Production Report**

**Policyholder Information**  
RENICK FARMS  
10502 6 ROAD  
INGALLS, KS 67853-9217  
Phone: (620)855-3820  
Entity Type: P

**Agency/Agent Information**  
WESTERN KANSAS INSURANCE SERVICES  
PO BOX 1142  
310 COURT STREET  
SCOTT CITY, KS 67871  
Phone: (620)872-5866  
Code: 954223

**APH Computation for**  
Crop Year: 2010  
State  
20-KANSAS  
County  
069-GRAY  
Print Date: 08/05/2010  
CSR:Elise B

Year	Crop	Plan	Level	Options	Price %
2010	CORN	RA	75%	BEFHYA	100%
2010	COTTN	CRC	75%	YA	100%
2010	GSOGR	CRC	75%	YA	100%
2010	OATS	APH	75%	YA	100%
2010	SBEAN	RA	75%	FHYA	100%
2010	SNFLR	RA	75%	FHYA	100%
2010	SSORG	APH	70%	YA	100%

Unit #	Crop	SBEAN	Unit #	Crop	SBEAN	Unit #	Crop	SBEAN
00401	069-GRAY	3513	00402	069-GRAY	3513	00403	069-GRAY	3513

Practice I	Type/Class/Etc.	NTS	FSA #	Section(s)	Type/Class/Etc.	NTS	FSA #	Section(s)
025S 029W 31	025S	030W	23	1	025S	030W	34	1
025S 029W 31	025S	030W	23	1	025S	030W	34	1

Farm Name	Farm Name	Farm Name

Other Entities	Other Entities	Other Entities

Class #	Class #	Class #

Processor # / Name and/or # of Trees or Vines			Processor # / Name and/or # of Trees or Vines			Processor # / Name and/or # of Trees or Vines			
Yr	Production	Acres	Yield	T Yield	Yr	Production	Acres	Yield	T Yield
00	0.0	0.0	0.0	48.0	00	0.0	0.0	0.0	48.0
01	0.0	0.0	0.0	48.0T	01	0.0	0.0	0.0	48.0
02	0.0	0.0	0.0	48.0T	02	0.0	0.0	0.0	48.0T
03	0.0	0.0	0.0	48.0T	03	0.0	0.0	0.0	48.0T
04	5745.8	123.0	47.0A	41.0	04	4996.3	123.0	41.0A	44.0
05	4297.1	123.0	35.0A	Yield	05	4852.6	123.0	39.0A	Yield
06	8175.6	240.3	34.0A	Floor	06	0.0	0.0	0.0Z	Floor
07	0.0	0.0	0.0Z	0.0	07	0.0	0.0	0.0Z	0.0
08	0.0	0.0	0.0Z	Approved	08	0.0	0.0	0.0Z	Approved
Sub-Tots			41.0	Yield	Sub-Tots			44.0	Yield
09	0.0	0.0	0.0Z	48.0	09	0.0	0.0	0.0Z	44.0

Yield Total	# of Years	Rate Yield	Guar Yield	Yield Total	# of Years	Rate Yield	Guar Yield
41.0		41.0	30.8	44.0		44.0	33

Record Type	A	B	C	D	E	F	Map/Risk	<None>

Plant Acres	Plant Date	Plant Acres	Plant Date	Plant Acres	Plant Date

**PRODUCTION, YIELD AND ACREAGE REPORT**  
**STONINGTON INSURANCE COMPANY**

This is my:  Production Report

Multiple Peril Crop Insurance

APH Computation for

**Policyholder Information**  
RENICK FARMS  
10502 6 ROAD  
INGALLS, KS 67853-9217  
Phone: (620)855-3820  
Entity Type: P

**Agency/Agent Information**  
WESTERN KANSAS INSURANCE SERVICES  
PO BOX 1142  
310 COURT STREET  
SCOTT CITY, KS 67871  
Phone: (620)872-5866 Code: 954223

**Year**  
2010  
2010  
2010  
2010  
2010  
2010

**Crop**  
CORN  
COTN  
GSOGR  
OATS  
SBEAN  
SNFLR  
SSORG

**Plan**  
RA  
CRC  
CRC  
APH  
RA  
RA  
APH

**Level**  
75%  
75%  
75%  
75%  
75%  
75%  
70%

**Options**  
BEFHYA  
YA  
YA  
YA  
FHYA  
FHYA  
YA

**Price %**  
100%  
100%  
100%  
100%  
100%  
100%  
100%

**Print Date:** 08/05/2010  
**CSR:** E/ise B

**Unit #** 00405 **Crop** SBEAN **Unit #** 00406 **Crop** SBEAN **Unit #** 00407 **Crop** SBEAN **Unit #** 00501 **Crop** SNFLR

**Practice I** County 069-GRAY **Practice I** County 069-GRAY **Practice I** County 069-GRAY

**Type/Class/Etc.** NTS FSA # 3513 **Type/Class/Etc.** NTS FSA # 3513 **Type/Class/Etc.** OIL FSA # 3515

**Twp / Range** 025S 030W 36 **Twp / Range** 025S 030W 35 **Twp / Range** 025S 030W 26 **Twp / Range** 025S 030W 23/25

**Section(s)** **Section(s)** **Section(s)** **Section(s)**

**Farm Name** **Farm Name** **Farm Name** **Farm Name**

**Other Entities** **Other Entities** **Other Entities** **Other Entities**

**Class #** **Class #** **Class #** **Class #**

**Processor # / Name and/or # of Trees or Vines**

Yr	Production	Acres	Yield	T Yield
00	0.0	0.0	0.0	48.0
01	0.0	0.0	0.0	48.0
02	0.0	0.0	48.0T	Prior Yield
03	0.0	0.0	48.0T	45.0
04	0.0	0.0	48.0T	45.0
05	4397.1	123.0	36.0A	Yield
06	0.0	0.0	0.0Z	Floor
07	0.0	0.0	0.0Z	0.0
08	0.0	0.0	0.0Z	Approved Yield
09	0.0	0.0	0.0Z	43.0
<b>Sub-Tots</b>				<b>YA 60%</b>
<b>Yield Total</b>				<b>Guar Yld</b>
42.0				32.3
<b>Rate Yield</b>				<b>Guar Yld</b>
4.2				3.23

**Processor # / Name and/or # of Trees or Vines**

Yr	Production	Acres	Yield	T Yield
00	0.0	0.0	0.0	48.0
01	0.0	0.0	0.0	48.0
02	0.0	0.0	0.0	Prior Yield
03	0.0	0.0	0.0	48.0
04	0.0	0.0	0.0	48.0
05	0.0	0.0	0.0	Yield
06	0.0	0.0	48.0T	Floor
07	0.0	0.0	48.0T	0.0
08	0.0	0.0	48.0T	Approved Yield
09	4142.8	123.0	34.0A	45.0
<b>Sub-Tots</b>				<b>YA 60%</b>
<b>Yield Total</b>				<b>Guar Yld</b>
45.0				33.8
<b>Rate Yield</b>				<b>Guar Yld</b>
4.5				3.38

**Processor # / Name and/or # of Trees or Vines**

Yr	Production	Acres	Yield	T Yield
00	0.0	0.0	0.0	48.0
01	0.0	0.0	0.0	48.0
02	0.0	0.0	0.0	Prior Yield
03	0.0	0.0	0.0	48.0
04	0.0	0.0	0.0	48.0
05	0.0	0.0	0.0	Yield
06	0.0	0.0	0.0	Floor
07	0.0	0.0	0.0	0.0
08	0.0	0.0	0.0	Approved Yield
09	0.0	0.0	0.0	45.0
<b>Sub-Tots</b>				<b>YA 60%</b>
<b>Yield Total</b>				<b>Guar Yld</b>
45.0				33.8
<b>Rate Yield</b>				<b>Guar Yld</b>
4.5				3.38

**Processor # / Name and/or # of Trees or Vines**

Yr	Production	Acres	Yield	T Yield
00	0.0	0.0	0.0	48.0
01	0.0	0.0	0.0	48.0
02	0.0	0.0	0.0	Prior Yield
03	0.0	0.0	0.0	48.0
04	0.0	0.0	0.0	48.0
05	0.0	0.0	0.0	Yield
06	0.0	0.0	0.0	Floor
07	0.0	0.0	0.0	0.0
08	0.0	0.0	0.0	Approved Yield
09	0.0	0.0	0.0	45.0
<b>Sub-Tots</b>				<b>YA 60%</b>
<b>Yield Total</b>				<b>Guar Yld</b>
42.0				32.3
<b>Rate Yield</b>				<b>Guar Yld</b>
4.2				3.23

**Processor # / Name and/or # of Trees or Vines**

Yr	Production	Acres	Yield	T Yield
00	0.0	0.0	0.0	48.0
01	0.0	0.0	0.0	48.0
02	0.0	0.0	0.0	Prior Yield
03	0.0	0.0	0.0	48.0
04	0.0	0.0	0.0	48.0
05	0.0	0.0	0.0	Yield
06	0.0	0.0	0.0	Floor
07	0.0	0.0	0.0	0.0
08	0.0	0.0	0.0	Approved Yield
09	0.0	0.0	0.0	45.0
<b>Sub-Tots</b>				<b>YA 60%</b>
<b>Yield Total</b>				<b>Guar Yld</b>
42.0				32.3
<b>Rate Yield</b>				<b>Guar Yld</b>
4.2				3.23

**Processor # / Name and/or # of Trees or Vines**

Yr	Production	Acres	Yield	T Yield
00	0.0	0.0	0.0	48.0
01	0.0	0.0	0.0	48.0
02	0.0	0.0	0.0	Prior Yield
03	0.0	0.0	0.0	48.0
04	0.0	0.0	0.0	48.0
05	0.0	0.0	0.0	Yield
06	0.0	0.0	0.0	Floor
07	0.0	0.0	0.0	0.0
08	0.0	0.0	0.0	Approved Yield
09	0.0	0.0	0.0	45.0
<b>Sub-Tots</b>				<b>YA 60%</b>
<b>Yield Total</b>				<b>Guar Yld</b>
45.0				33.8
<b>Rate Yield</b>				<b>Guar Yld</b>
4.5				3.38

**Processor # / Name and/or # of Trees or Vines**

Yr	Production	Acres	Yield	T Yield
00	0.0	0.0	0.0	48.0
01	0.0	0.0	0.0	48.0
02	0.0	0.0	0.0	Prior Yield
03	0.0	0.0	0.0	48.0
04	0.0	0.0	0.0	48.0
05	0.0	0.0	0.0	Yield
06	0.0	0.0	0.0	Floor
07	368518.9	226.5	1627.0A	0.0
08	0.0	0.0	0.0	Approved Yield
09	0.0	0.0	0.0	1591.0
<b>Sub-Tots</b>				<b>YA 60%</b>
<b>Yield Total</b>				<b>Guar Yld</b>
1,591.0				1,193
<b>Rate Yield</b>				<b>Guar Yld</b>
1.591				1.193

**Remarks**

Record Type A B C D E F Map/Risk <None>

Plant Acres, PP Acres, Int %, Date

**Remarks**

Record Type A B C D E F Map/Risk <None>

Plant Acres, PP Acres, Int %, Date

**Remarks**

Record Type A B C D E F Map/Risk <None>

Plant Acres, PP Acres, Int %, Date



Agro National Inc.  
300 West Broadway, Suite 500  
Council Bluffs, IA 51503  
NATIONAL TEL: (712) 258-0968

**PRODUCTION, YIELD AND ACREAGE REPORT**  
**STONINGTON INSURANCE COMPANY**

Administered By: Agro National  
Policy #: KS-631-0986271-10

This is my:  Production Report

Multiple Peril Crop Insurance

Page 13 of 14

**Policyholder Information**  
RENICK FARMS  
10502 6 ROAD  
INGALLS, KS 67853-9217  
Phone: (620)855-3820  
Entity Type: P

**Agency/Agent Information**  
WESTERN KANSAS INSURANCE SERVICES  
PO BOX 1142  
310 COURT STREET  
SCOTT CITY, KS 67871  
Phone: (620)872-5866 Code: 954223

**APH Computation for**  
Crop Year: 2010  
State: 20-KANSAS  
County: OATS  
069-GRAY  
Print Date: 08/05/2010  
CSR:Elise B

Year	Crop	Plan	Level	Options	Price %
2010	CORN	RA	75%	BEFHYA	100%
2010	COTTN	CRC	75%	YA	100%
2010	GSORG	CRC	75%	YA	100%
2010	OATS	APH	75%	YA	100%
2010	SBEAN	RA	75%	FHYA	100%
2010	SNFLR	RA	75%	FHYA	100%
2010	SSORG	APH	70%	YA	100%

Unit #	Practice	County	FSA #	Section(s)	Unit #	Practice	County	FSA #	Section(s)	Unit #	Practice	County	FSA #	Section(s)
00102	I	SSORG	069-GRAY											
025S	030W	23		/										
<b>Farm Name</b>														
<b>Other Entities</b>														
<b>Class #</b>														
<b>Processor # / Name and/or # of Trees or Vines</b>														
Yr	Production	Acres	Yield	T Yield	Yr	Production	Acres	Yield	T Yield	Yr	Production	Acres	Yield	T Yield
00	0.0	0.0	0.0	17.8										
01	0.0	0.0	0.0											
02	0.0	0.0	0.0	Prior Yield										
03	0.0	0.0	0.0	Yield										
04	0.0	0.0	0.0	16.6										
05	0.0	0.0	0.0	Yield										
06	0.0	0.0	17.8I	Floor										
07	0.0	0.0	17.8I	0.0										
08	2108.7	165.0	12.8A	Approved Yield										
Sub-Tots				15.8										
09	2409.0	165.0	14.6A	Approved Yield										
Yield Total	# of Years	Rate Yield	Guar Yld		Yield Total	# of Years	Rate Yield	Guar Yld		Yield Total	# of Years	Rate Yield	Guar Yld	
		15.8	11.06											
<b>Record Type A B C D E F</b>														
<b>Remarks</b>														
<b>Plant Acres</b>														
<b>PP Acres</b>														
<b>Plant Date</b>														
<b>Int %</b>														
<b>Yield</b>														
<b>Rate</b>														
<b>Guar</b>														

Required:  Field Review  Inspection  List Crop(s)  New Producer of  Added Land P/TW  (11-00)



Agro National Inc.  
300 West Broadway, Suite 500  
Council Bluffs, IA 51503  
Tel: (712) 256-0968

Print Date 08/05/10

STONINGTON INSURANCE COMPANY

Administered By: Agro National

**Multiple Peril Crop Insurance Production, Yield And Acreage Report**

Policy Number KS-631-0986271-10  
RENICK FARMS Page 14 of 14

**COLLECTION OF INFORMATION AND DATA (PRIVACY ACT) STATEMENT**

Agents, Loss Adjusters and Policyholders

The following statements are made in accordance with the Privacy Act of 1974 (5 U.S.C. 552a); The Risk Management Agency (RMA) is authorized by the Federal Crop Insurance Act (7 U.S.C. 1501-1524) or other Acts, and the regulations promulgated thereunder, to solicit the information requested on documents established by RMA or by approved insurance providers (AIPs) that have been approved by the Federal Crop Insurance Corporation (FCIC) to deliver Federal crop insurance. The information is necessary for AIPs and RMA to operate the Federal crop insurance program, determine program eligibility, conduct statistical analysis, and ensure program integrity. Information provided herein may be furnished to other Federal, State, or local agencies, as required or permitted by law, law enforcement agencies, courts or adjudicative bodies, foreign agencies, magistrate, administrative tribunal, AIP's contractors and cooperators, Comprehensive Information Management System (CIMS), congressional offices, or entities under contract with RMA. For insurance agents, certain information may also be disclosed to the public to assist interested individuals in locating agents in a particular area. Disclosure of the information requested is voluntary. However, failure to correctly report the requested information may result in the rejection of this document by the AIP or RMA in accordance with the Standard Reinsurance Agreement between the AIP and FCIC; Federal regulations, or RMA-approved procedures and the denial of program eligibility or benefits derived therefrom. Also, failure to provide true and correct information may result in civil suit or criminal prosecution and the assessment of penalties or pursuit of other remedies.

**RECORD TYPE**

A = Prod. Solid Commercial storage B = Farm Stored/Record Bin  
Measurement C = Livestock Feeding Records D = Appraisal E = FSA  
Loan Record F = Other

Number of Trees/Mines

Processor Number/Name

Land other county Yes  No

Required Inspection

**PRODUCTION CERTIFICATION STATEMENT**

I certify that to the best of my knowledge and belief all of the information on this form is correct. I also understand that failure to report completely and accurately may result in sanctions under my policy, including but not limited to voidance of the policy, and in criminal or civil penalties (18 U.S.C. ? 1006 and ? 1014; 7 U.S.C. ? 1506; 31 U.S.C. ? 3729, ? 3730 and any other applicable federal statutes).

**False Claims Statement**

The information I have furnished on this form is complete and accurate. I understand that any false or inaccurate information may result in the sanctions outlined in my policy and administrative, civil, and criminal sanctions under 18 U.S.C. 1006 and 1014, 7 U.S.C. 1506, 31 U.S.C. 3729 and 3730 and other federal statutes.

**NONDISCRIMINATION STATEMENT**

The U.S. Department of Agriculture (USDA) prohibits discrimination in all its programs and activities on the basis of race, color, national origin, age, disability, and where applicable, sex, marital status, familial status, parental status, religion, sexual orientation, genetic information, political beliefs, reprisal, or because all or part of an individual's income is derived from any public assistance program. (Not all prohibited bases apply to all programs.) Persons with disabilities who require alternative means for communication of program information (Braille, large print, audiotape, etc.) should contact USDA's TARGET Center at (202) 720-2600 (Voice and TDD).

To file a complaint of discrimination, write USDA, Director, Office of Civil Rights, 1400 Independence Avenue S.W., Washington, D.C. 20250-9410 or call (800) 795-3272 (voice) or (202) 720-6382 (TDD). USDA is an equal opportunity provider and employer.

Purpose for Signature (check one)  Acreage Report Certification  Production Report Certification

Insured Signature (RENICK FARMS)

Date

Agent Signature

Date

Agent Code

Purpose for Signature (check one)  Acreage Report Certification  Production Report Certification

Insured Signature (RENICK FARMS)

Date

Agent Signature

Date

Agent Code



Agro National Inc.  
300 West Broadway, Suite 500  
Council Bluffs, IA 51503  
NATIONAL Tel: (712) 256-0968

**PRODUCTION, YIELD AND ACREAGE REPORT**  
**STONINGTON INSURANCE COMPANY**

Administered By: Agro National  
Policy #: KS-631-0986269-10

This is my:  Production Report

Multiple Peril Crop Insurance

Page 1 of 3

**Policyholder Information**  
RENICK FARMS  
10502 6 ROAD  
INGALLS, KS 67853-9217  
Phone: (620)855-3820  
Entity Type: P

**Agency/Agent Information**  
WESTERN KANSAS INSURANCE SERVICES  
PO BOX 1142  
310 COURT STREET  
SCOTT CITY, KS 67871  
Phone: (620)872-5866  
Code: 954223

**APH Computation for**  
Crop Year: 2010  
State: 20-KANSAS  
County: 055-FINNEY  
Print Date: 09/05/2010  
CSR: Elise B

**Plan** **Level** **Options** **Price %**  
APH 75% YA 100%  
RA 75% BEEHYA 100%  
CRC 75% YA 100%  
APH 75% YA 100%  
SBEAN 75% FRYA 100%  
SNFLR 75% FHYA 100%  
SSORG 75% YA 100%

Unit # 00101	Crop CORN	Unit # 00102	Crop CORN	Unit # 00103	Crop CORN	Unit # 00104	Crop CORN
Practice I	County 055-FINNEY	Practice NI	County 055-FINNEY	Practice I	County 055-FINNEY	Practice NI	County 055-FINNEY

Type/Class/Etc. GSG	FSA #	Section(s)	Type/Class/Etc. GSG	FSA #	Section(s)	Type/Class/Etc. GSG	FSA #	Section(s)
025S 031W13	22		025S 031W13	22		025S 031W26	22	

**Farm Name** AAA High Risk

**Other Entities**

**Class #**

**Processor # / Name and/or # of Trees or Vines**

Yr	Production	Acres	Yield	T Yield	Yr	Production	Acres	Yield	T Yield
89	10266.0	81.9	125.0A	168.0	95	0.0	0.0	42.0T	42.0
92	24833.0	118.6	209.0A	42.0T	96	0.0	0.0	42.0T	42.0T
93	20495.0	120.9	170.0A	42.0T	97	0.0	0.0	42.0T	Prior Yield
95	23018.0	117.3	196.0A	93.0A	98	3216.0	31.0	104.0A	Prior Yield
97	24950.0	123.0	203.0A	177.0	03	0.0	0.0	0.0Z	69.0
98	27729.0	125.0	222.0A	Yield	05	0.0	0.0	0.0Z	Yield
99	21985.0	125.0	176.0A	Floor	06	0.0	0.0	0.0Z	Floor
00	22354.0	125.0	179.0A	0.0	07	0.0	0.0	0.0Z	0.0
01	21970.0	125.0	176.0A	Approved	08	0.0	0.0	0.0Z	Approved
Sub-Tots	184.5	123.0	2.0A	176.0	Sub-Tots	09	0.0	0.0Z	Yield 63.0
Yield Total	# of Years	Rate Yield	Guar Yield	YA 60%	Yield Total	# of Years	Rate Yield	Guar Yield	Rate Yield
166.0	132	1.66.0	1.32		114	63.0	47.3	47.3	47.3

**Remarks**

Record Type A B C D E F Map/Risk <None>

Plant Acres	Plant Date	Int %	Plant Acres	Plant Date	Int %	Plant Acres	Plant Date	Int %	Plant Acres	Plant Date	Int %
		1			1			1			1



**PRODUCTION, YIELD AND ACREAGE REPORT**  
**STONINGTON INSURANCE COMPANY**

Administered By: Agro National  
Policy #: KS-631-0986269-10

This is my:  Production Report

Multiple Peril Crop Insurance

Page 2 of 3

**Policyholder Information**  
RENICK FARMS  
10502 6 ROAD  
INGALLS, KS 67853-9217  
Phone: (620)855-3820  
Entity Type: P

**Agency/Agent Information**  
WESTERN KANSAS INSURANCE SERVICES  
PO BOX 1142  
310 COURT STREET  
SCOTT CITY, KS 67871  
Phone: (620)872-5866  
Code: 954223

APH Computation for  
Crop Year: 2010  
State  
20-KANSAS  
County  
055-FINNEY  
Print Date: 08/05/2010  
CSR:Elise B

Year	Crop	Plan	Level	Options	Price %
2010	BARLY	APH	75%	YA	100%
2010	CORN	RA	75%	BEEHYA	100%
2010	GSORG	CRC	75%	YA	100%
2010	OATS	APH	75%	YA	100%
2010	SBEAN	RA	75%	FHYA	100%
2010	SNFLR	RA	75%	FHYA	100%
2010	SSORG	APH	75%	YA	100%

Unit #	Crop	County	Practice	Unit #	Crop	County	Practice
00201	GSORG	055-FINNEY	NI	00300	SBEAN	055-FINNEY	055-FINNEY
Type/Class/Etc. NTS		FSA #	Section(s)	Type/Class/Etc. NTS		FSA #	Section(s)
025S 031W 13			22	025S 031W 13			22
Farm Name		AAA High Risk		Farm Name			
Other Entities				Other Entities			
Class #				Class #			

Processor # / Name and/or # of Trees or Vines									
Yr	Production	Acres	Yield	T Yield	Yr	Production	Acres	Yield	T Yield
99	0.0	0.0	97.0N	108.0	98	0.0	0.0	34.0S	52.0
00	0.0	0.0	97.0N		99	0.0	0.0	34.0S	
01	0.0	0.0	97.0N	Prior	00	0.0	0.0	34.0S	Prior
03	0.0	0.0	97.0N	Yield	01	0.0	0.0	34.0S	Yield
04	0.0	0.0	0.0Z	0.0	04	0.0	0.0	0.0Z	0.0
05	0.0	0.0	0.0Z	Yield	05	0.0	0.0	0.0Z	Yield
06	0.0	0.0	0.0Z	Floor	06	0.0	0.0	0.0Z	Floor
07	0.0	0.0	0.0Z	0.0	07	0.0	0.0	0.0Z	0.0
08	0.0	0.0	0.0Z	Approved	08	0.0	0.0	0.0Z	Approved
Sub-Tots				Yield	Sub-Tots			Yield	Yield
09	0.0	0.0	0.0Z	97.0	09	0.0	0.0	0.0Z	34.0
Yield Total	# of Years	Rate Yield	Guar Yield		Yield Total	# of Years	Rate Yield	Guar Yield	
97.0	97.0	97.0	72.8		34.0	25.5	34.0	25.5	

Processor # / Name and/or # of Trees or Vines									
Yr	Production	Acres	Yield	T Yield	Yr	Production	Acres	Yield	T Yield
99	0.0	0.0	51.0N	57.0	98	0.0	0.0	34.0S	52.0
00	0.0	0.0	51.0N		99	0.0	0.0	34.0S	
01	1975.0	81.8	24.0A	Prior	00	0.0	0.0	34.0S	Prior
03	0.0	0.0	0.0Z	Yield	01	0.0	0.0	34.0S	Yield
04	0.0	0.0	0.0Z	41.0	04	0.0	0.0	0.0Z	0.0
05	0.0	0.0	0.0Z	Yield	05	0.0	0.0	0.0Z	Yield
06	0.0	0.0	0.0Z	Floor	06	0.0	0.0	0.0Z	Floor
07	0.0	0.0	0.0Z	43.0	07	0.0	0.0	0.0Z	0.0
08	1871.7	85.5	22.0A	Approved	08	0.0	0.0	0.0Z	Approved
Sub-Tots				Yield	Sub-Tots			Yield	Yield
09	0.0	0.0	0.0Z	43.0	09	0.0	0.0	0.0Z	34.0
Yield Total	# of Years	Rate Yield	Guar Yield		Yield Total	# of Years	Rate Yield	Guar Yield	
37.0	37.0	37.0	32.3		34.0	25.5	34.0	25.5	

Record Type A B C D E F Map/Risk <None>

Remarks

Plant Acres		Plant Date	
PP Acres		Int %	

Required:  Field Review  Inspection



Agro National Inc.  
300 West Broadway, Suite 500  
Council Bluffs, IA 51503  
National Tel: (712) 256-0968

Print Date 08/05/10

STONINGTON INSURANCE COMPANY  
Multiple Peril Crop Insurance

Production, Yield And Acreage Report  
RENICK FARMS

Administered By: Agro National  
Policy Number KS-631-0986269-10  
Page 3 of 3

**COLLECTION OF INFORMATION AND DATA (PRIVACY ACT) STATEMENT**

Agents, Loss Adjusters and Policyholders

The following statements are made in accordance with the Privacy Act of 1974 (5 U.S.C. 552a): The Risk Management Agency (RMA) is authorized by the Federal Crop Insurance Act (7 U.S.C. 1501-1524) or other Acts and the regulations promulgated thereunder, to solicit the information requested on documents established by RMA or by approved insurance providers (AIPs) that have been approved by the Federal Crop Insurance Corporation (FCIC) to deliver Federal crop insurance. The information is necessary for AIPs and RMA to operate the Federal crop insurance program, determine program eligibility, conduct statistical analysis, and ensure program integrity. Information provided herein may be furnished to other Federal, State, or local agencies, as required or permitted by law, law enforcement agencies, courts or adjudicative bodies, foreign agencies, magistrate, administrative tribunal, AIP's contractors and cooperators, Comprehensive Information Management System (CIMS), congressional offices, or entities under contract with RMA. For insurance agents, certain information may also be disclosed to the public to assist interested individuals in locating agents in a particular area. Disclosure of the information requested is voluntary. However, failure to correctly report the requested information may result in the rejection of this document by the AIP or RMA in accordance with the Standard Reinsurance Agreement between the AIP and FCIC, Federal regulations, or RMA-approved procedures and the denial of program eligibility or benefits derived therefrom. Also, failure to provide true and correct information may result in civil suit or criminal prosecution and the assessment of penalties or pursuit of other remedies.

**NONDISCRIMINATION STATEMENT**

The U.S. Department of Agriculture (USDA) prohibits discrimination in all its programs and activities on the basis of race, color, national origin, age, disability, and where applicable, sex, marital status, familial status, parental status, religion, sexual orientation, genetic information, political beliefs, reprisal, or because all or part of an individual's income is derived from any public assistance program. (Not all prohibited bases apply to all programs.) Persons with disabilities who require alternative means for communication of program information (Braille, large print, audiotape, etc.) should contact USDA's TARGET Center at (202) 720-2600 (voice and TDD).

To file a complaint of discrimination, write USDA, Director, Office of Civil Rights, 1400 Independence Avenue S.W., Washington, D.C. 20250-9410 or call (800) 795-3272 (voice) or (202) 720-6382 (TDD). USDA is an equal opportunity provider and employer.

**RECORD TYPE**

A = Prod. Sold/Commercial storage B = Farm Stored/Record Bin  
Measurement C = Livestock Feeding Records D = Appraisal E = FSA  
Loan Record F = Other

Number of Trees/Vines

Processor Number/Name

Land other county Yes  No

Required Inspection

**False Claims Statement**

The information I have furnished on this form is complete and accurate. I understand that any false or inaccurate information may result in the sanctions outlined in my policy and administrative, civil, and criminal sanctions under 18 U.S.C. 1006 and 1014, 7 U.S.C. 1506, 3 U.S.C. 3729 and 3730 and other federal statutes.

**PRODUCTION CERTIFICATION STATEMENT**

I certify that to the best of my knowledge and belief all of the information on this form is correct. I also understand that failure to report completely and accurately may result in sanctions under my policy, including but not limited to voidance of the policy, and in criminal or civil penalties (18 U.S.C. ? 1006 and ? 1014; 7 U.S.C. ? 1506; 31 U.S.C. ? 3729, ? 3730 and any other applicable federal statutes).

Purpose for Signature (check one)  Acreage Report Certification  Production Report Certification

Insured Signature (RENICK FARMS) \_\_\_\_\_ Date \_\_\_\_\_

Agent Signature \_\_\_\_\_ Date \_\_\_\_\_ Agent Code \_\_\_\_\_

Purpose for Signature (check one)  Acreage Report Certification  Production Report Certification

Insured Signature (RENICK FARMS) \_\_\_\_\_ Date \_\_\_\_\_

Agent Signature \_\_\_\_\_ Date \_\_\_\_\_ Agent Code \_\_\_\_\_

## **Residential Well & Natural Gas formation**

**Tracts 3-4:** The water well servicing Tracts 3 & 4 is located on Tract 4. In the event Tracts 3 & 4 sell separately both tracts will have unobstructed use of the water well for a period of 1 year from the time of closing. Any repair or maintenance will be shared equally. After one year the owner of Tract 3 shall provide their own water service.

**Tracts 17, 18 & 19:** The water well servicing Tracts 17, 18 & 19 is located on Tract 18. In the event Tracts 17 or 19 sell separate from Tract 18, the buyer of Tracts 17 or 19 will have unobstructed use of the water well for a period of 1 year from the time of closing. Any repair or maintenance will be shared equally. After one year the owners of Tracts 17 and/or 19 shall provide their own water service.

**Tract 24:** (House) Natural gas will be provided by the Seller at no cost till May 1, 2011.

**Tract 27:** The water well servicing Tract 27 is located on adjoining property. The Buyer of Tract 27 shall have continued use of the well for a period of 1 year from the date of closing. Any maintenance or repair will be paid totally by the owner of Tract 27. After one year the Buyer shall provide his/her own water service.

