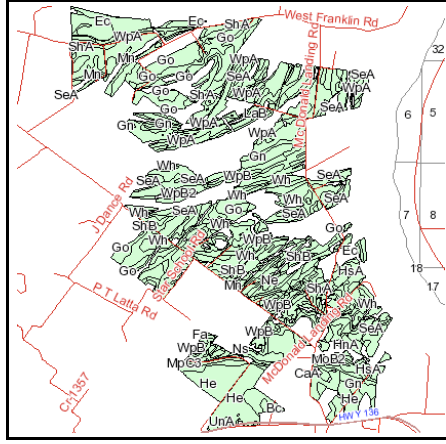


SURETY SOILS MAP



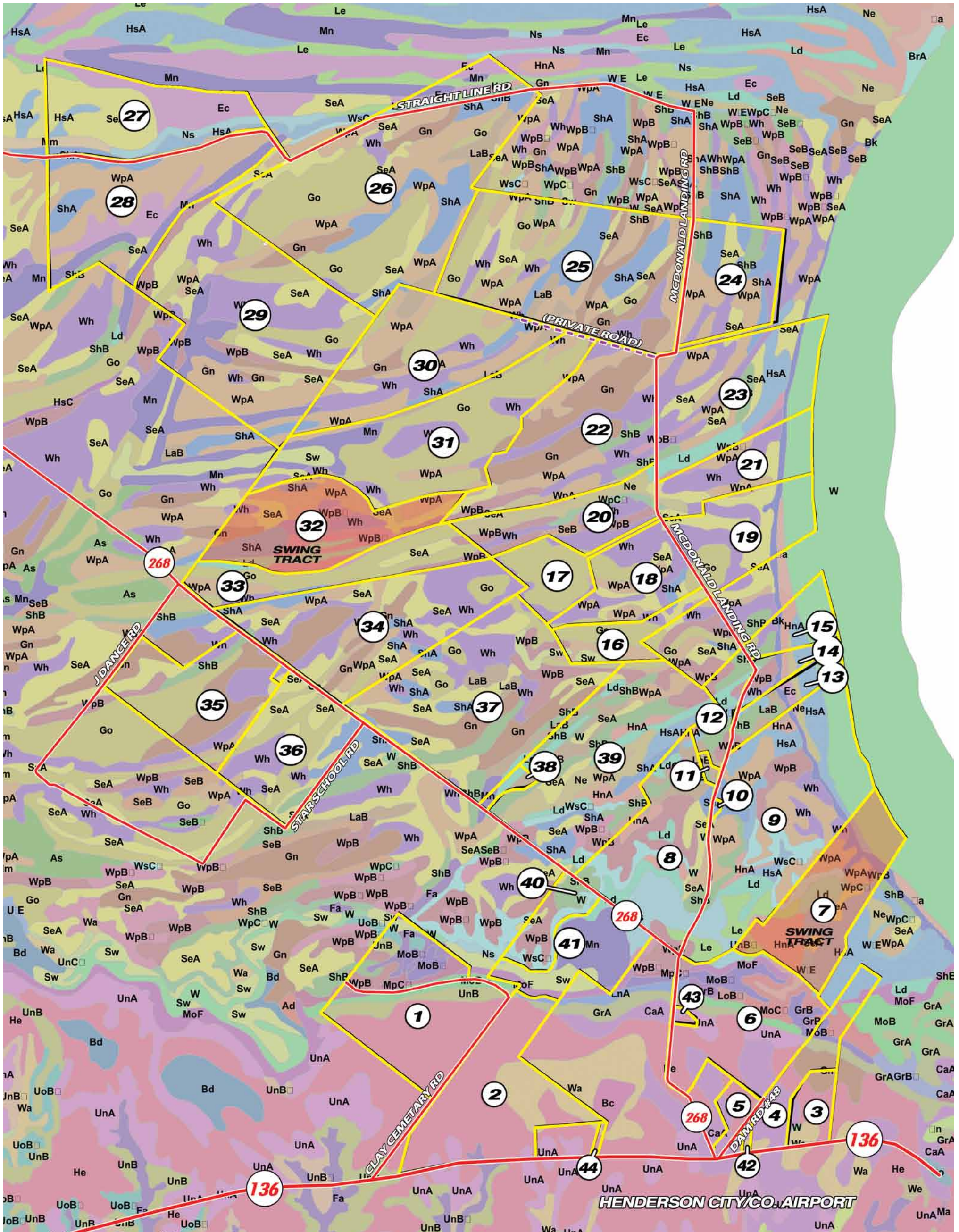
State: **Kentucky**
 County: **Henderson**
 Map Center: **37° 50' 27.16, 87° 42' 39.25**
 Township: **Corydon**
 Acres: **3331.1**
 Date: **6/28/2010**



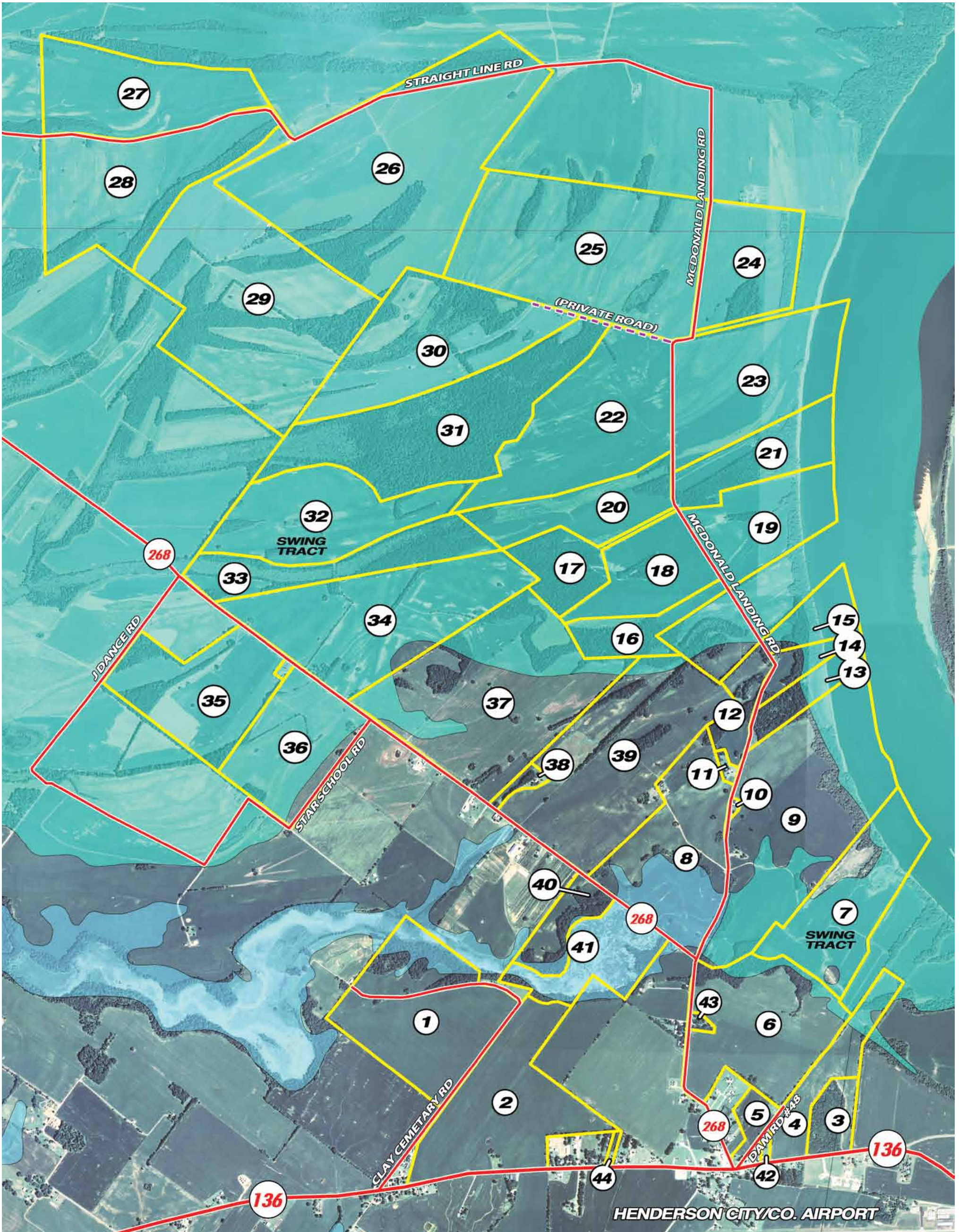
Fsa borders provided by the Farm Service Agency as of May 23, 2008.
 Soils data provided by USDA and NRCS.

Code	Soil Description	Acres	Percent of field	Non-Irr Class	Corn	Grass legume hay	Pasture	Soybeans	Winter wheat
WpA	Wheeling silt loam, 0 to 2 percent slopes (elk flooded)	562	16.9%	I	166	5.5	10.5	59	80
Wh	Weinbach silt loam	390.1	11.7%	IIIw	123	4.7	8.4	52	
SeA	Sciotoville silt loam, 0 to 2 percent slopes (otwell flooded)	387.1	11.6%	IIw	140	5	9.5	59	64
Gn	Ginat silt loam	232.5	7.0%	IIIw	96	4.7	8.4	52	
He	Henshaw silt loam	228.4	6.9%	IIw	131	3.3	8.4	65	60
ShA	Sequatchie loam, 0 to 2 percent slopes	220.3	6.6%	I	149	5.5	10	62	76
Go	Ginat silty clay loam	208.5	6.3%	IIIw	88	4.4	7.9	49	
WpB	Wheeling silt loam, 2 to 6 percent slopes (elk flooded)	141.4	4.2%	Ile	166	5.5	10	59	80
ShB	Sequatchie loam, 2 to 6 percent slopes	107.6	3.2%	Ile	149	5.5	9.5	62	76
LaB	Lakin loamy fine sand, 2 to 6 percent slopes	84.5	2.5%	IIIs	88	3.6	6.3		52
HsA	Huntington silt loam, 0 to 4 percent slopes	80	2.4%	IIw	175	5.5	10.5	65	80
Ld	Lindside silt loam	72.2	2.2%	IIw	166	5.5	10.5	65	76
Ec	Egam silty clay loam	69.8	2.1%	IIw	166	5	10	59	72
Mn	Melvin silty clay loam	50.5	1.5%	IIIw	140	4.7	9.5	42	
Ne	Newark silt loam	47.9	1.4%	IIw	149	5.2	10.5	59	72
WsC3	Wheeling silty clay loam, 6 to 12 percent slopes, severely eroded (elk flooded)	46.5	1.4%	IVe	114	5	7.9	42	56
HnA	Huntington fine sandy loam, 0 to 4 percent slopes (grigsby)	45.9	1.4%	IIw	166	5.5	9.5	62	80
CaA	Calloway silt loam, 0 to 2 percent slopes	40.7	1.2%	IIIw	123	4.7	8.4	52	52
WpB2	Wheeling silt loam, 2 to 6 percent slopes, eroded (elk flooded)	38.1	1.1%	Ile	166	5.5	10	59	80
Wa	Wakeland silt loam	30.7	0.9%	IIw	158	5.2	9.5	59	60
Ns	Newark silty clay loam	29.4	0.9%	IIw	149	5.2	10.5	59	72
MoB2	Memphis silt loam, 2 to 6 percent slopes, eroded	25.1	0.8%	Ile	166	5.5	10	55	72
Le	Lindside silty clay loam	24.3	0.7%	IIw	166	5.5	10.5	65	76
MoB	Memphis silt loam, 2 to 6 percent slopes	21.2	0.6%	Ile	166	5.5	10	55	72
UnB	Uniontown silt loam, 2 to 6 percent slopes	21	0.6%	Ile	158	5.5	9.5	62	76
MoC2	Memphis silt loam, 6 to 12 percent slopes, eroded	19.3	0.6%	IIIe	149	5.5	9.5	49	64
UnA	Uniontown silt loam, 0 to 2 percent slopes	18.4	0.6%	I	158	5.5	9.5	62	76
Sw	Swamp (melvin ponded)	18.3	0.6%	VIIw					
GrA	Grenada silt loam, 0 to 2 percent slopes	9.3	0.3%	IIw	140	5	8.9	52	56
Fa	Falaya silt loam	8.8	0.3%	IIw	149	5.2	9.5	62	60
MpC3	Memphis silty clay loam, 6 to 12 percent slopes, severely eroded	8	0.2%	IVe	123	5.2	7.9	36	56
MoF	Memphis silt loam, 30 to 50 percent slopes	6.9	0.2%	VIIe			8.4		
Mm	Melvin silt loam	5.5	0.2%	IIIw	140	4.7	9.5	46	
LnA	Loring silt loam, 0 to 2 percent slopes	5.3	0.2%	IIw	149	5.5	9.5	52	72
WpC2	Wheeling silt loam, 6 to 12 percent slopes, eroded (elk flooded)	5.1	0.2%	IIIe	140	5.5	9.5	52	72
GrB	Grenada silt loam, 2 to 6 percent slopes	4.7	0.1%	Ile	140	5.2	9.5	49	56
SeB	Sciotoville silt loam, 2 to 6 percent slopes (otwell flooded)	4	0.1%	Ile	131	5	9.5	55	64
LoB3	Loring silty clay loam, 2 to 6 percent slopes, severely eroded	2.8	0.1%	IIIe	131	4.4	8.4	52	64
UoB3	Uniontown silty clay loam, 2 to 6 percent slopes, severely eroded	2.5	0.1%	IIIe	131	4.4	7.9	49	56
W	Water	2.4	0.1%						
WtE	Wheeling soils, 12 to 30 percent slopes	1.3	0.0%	VIe		4.7	8.4		
Gu	Gullied land	1.2	0.0%	VIIe					
UnB2	Uniontown silt loam, 2 to 6 percent slopes, eroded	1	0.0%	Ile	158	5.5	9.5	62	76
Bk	Breaks and alluvial land (wheeling)	0.5	0.0%	VIIw					
Bc	Birds silty clay loam (melvin)	0.1	0.0%	IIIw	140	4.7	9.5	46	
Weighted Average					138.1	4.9	9.2	55.3	51.7

SOILS MAP BY TRACT



FLOOD PLAIN MAP



AERIAL TRACT MAP

