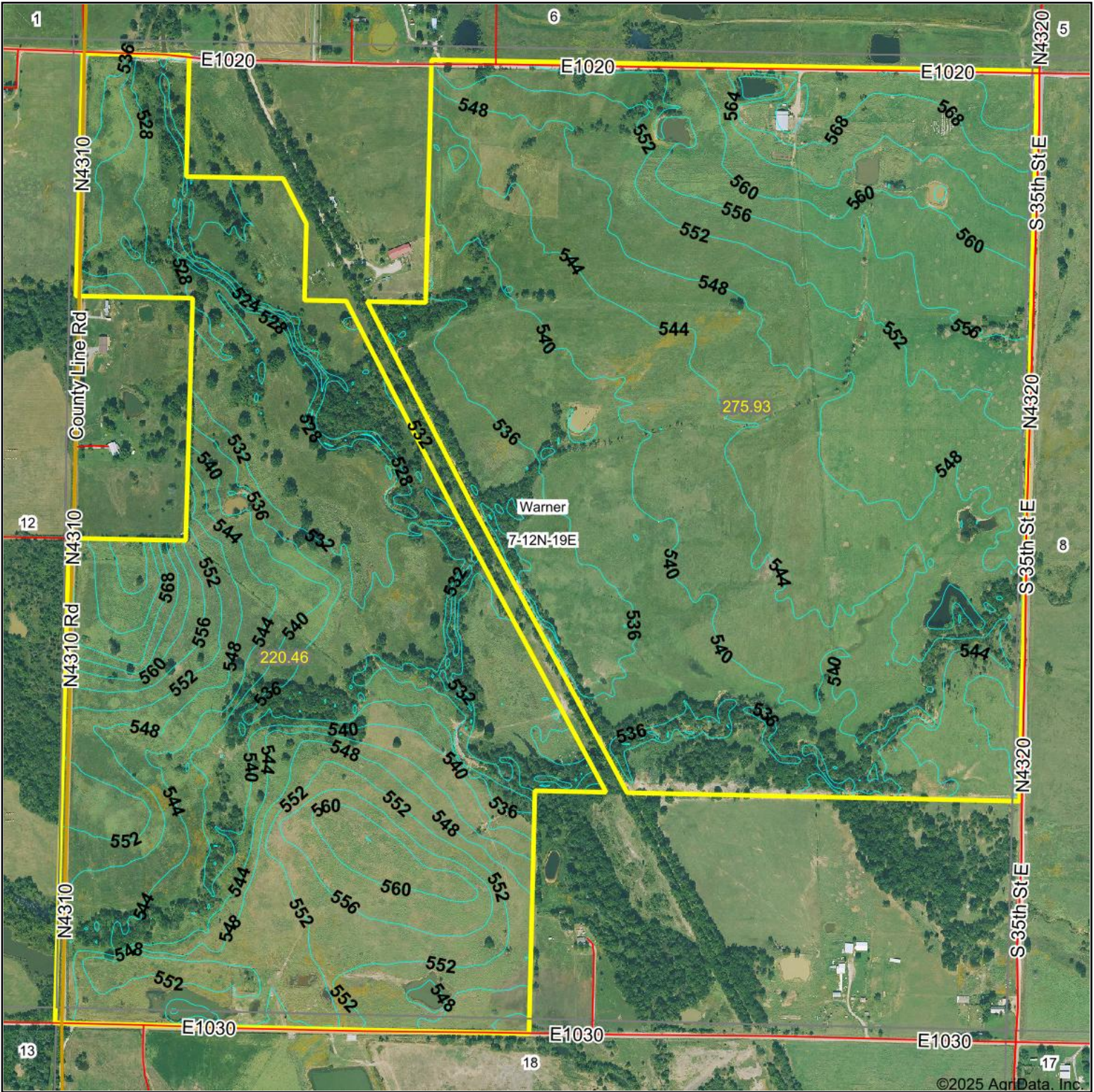


# Topography Contours

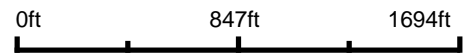


©2025 AgriData, Inc.



© AgriData, Inc. 2023 www.AgriDataInc.com

Source: USGS 10 meter dem  
 Interval(ft): 4.0  
 Min: 521.4  
 Max: 579.1  
 Range: 57.7  
 Average: 545.1  
 Standard Deviation: 10.7 ft



4/2/2025

7-12N-19E  
 Muskogee County  
 Oklahoma

Boundary Center: 35° 31' 46.34, -95° 20' 10.17