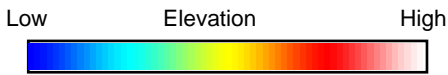
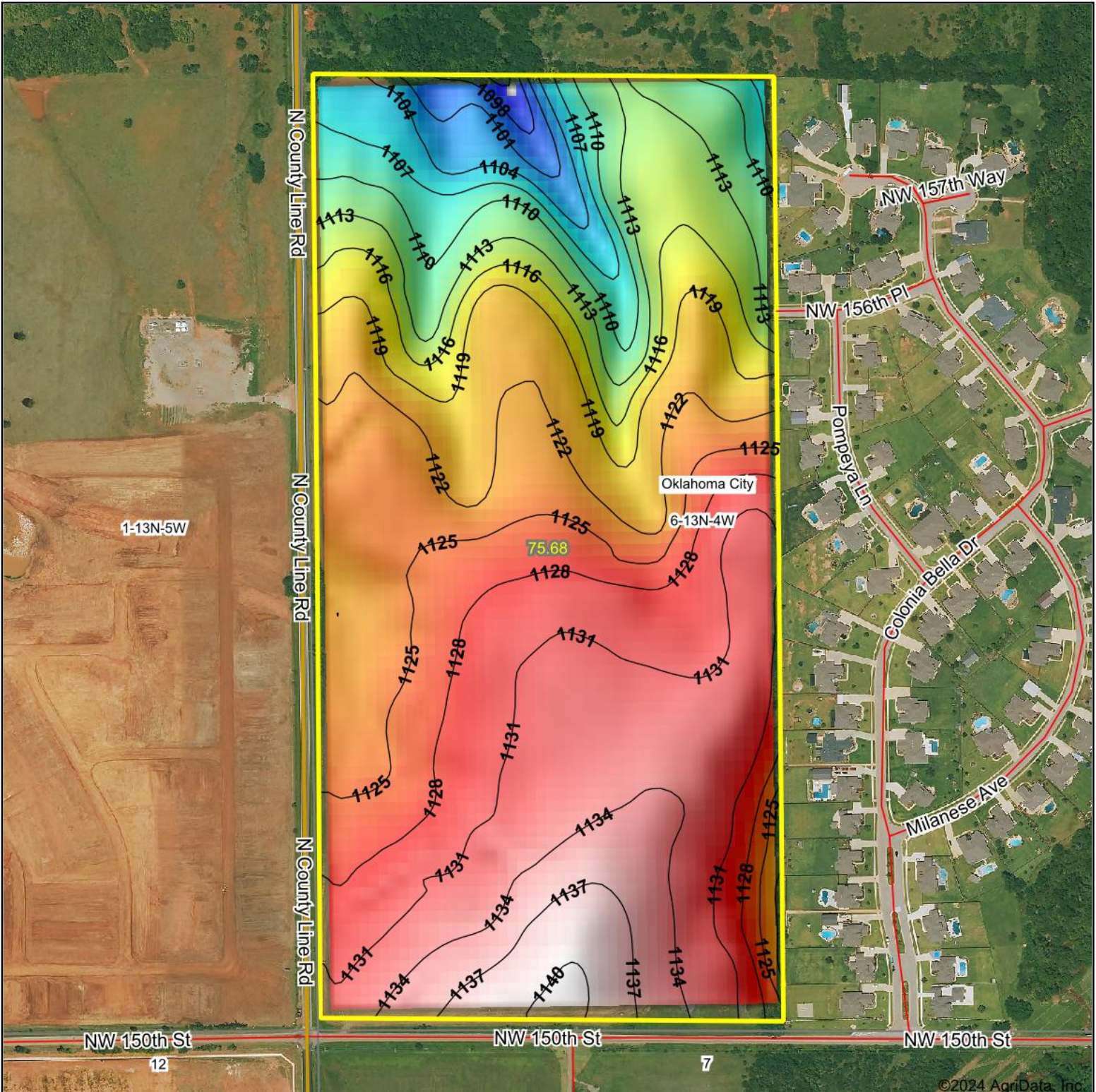
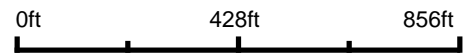


Topography Hillshade



Source: USGS 10 meter dem
 Interval(ft): 3
 Min: 1,095.3
 Max: 1,140.5
 Range: 45.2
 Average: 1,123.7
 Standard Deviation: 9.48 ft



6-13N-4W
Oklahoma County
Oklahoma

Boundary Center: 35° 37' 39.47, -97° 40' 18.18

SCHRADER
 Real Estate and Auction Company, Inc.

Maps Provided By:



© AgriData, Inc. 2023 www.AgriDataInc.com

©2024 AgriData, Inc.