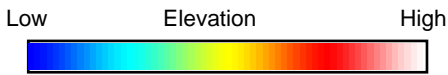
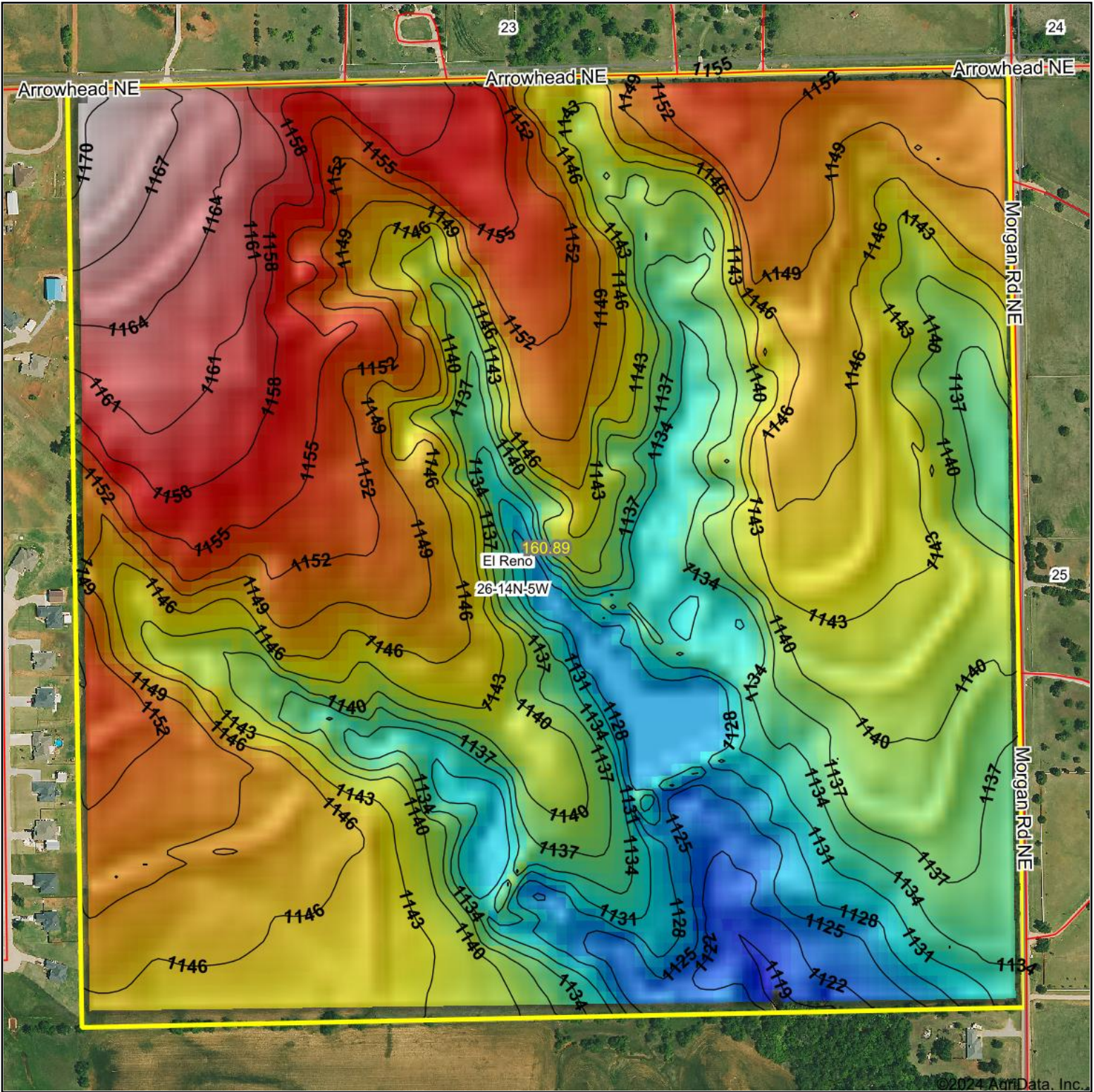
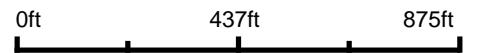


Topography Hillshade



Source: USGS 10 meter dem
 Interval(ft): 3
 Min: 1,116.9
 Max: 1,170.6
 Range: 53.7
 Average: 1,144.1
 Standard Deviation: 10.33 ft



26-14N-5W
 Canadian County
 Oklahoma

Boundary Center: 35° 39' 50.18, -97° 41' 46.71



Maps Provided By:



© AgriData, Inc. 2023

www.AgrIDataInc.com

©2024 AgriData, Inc.