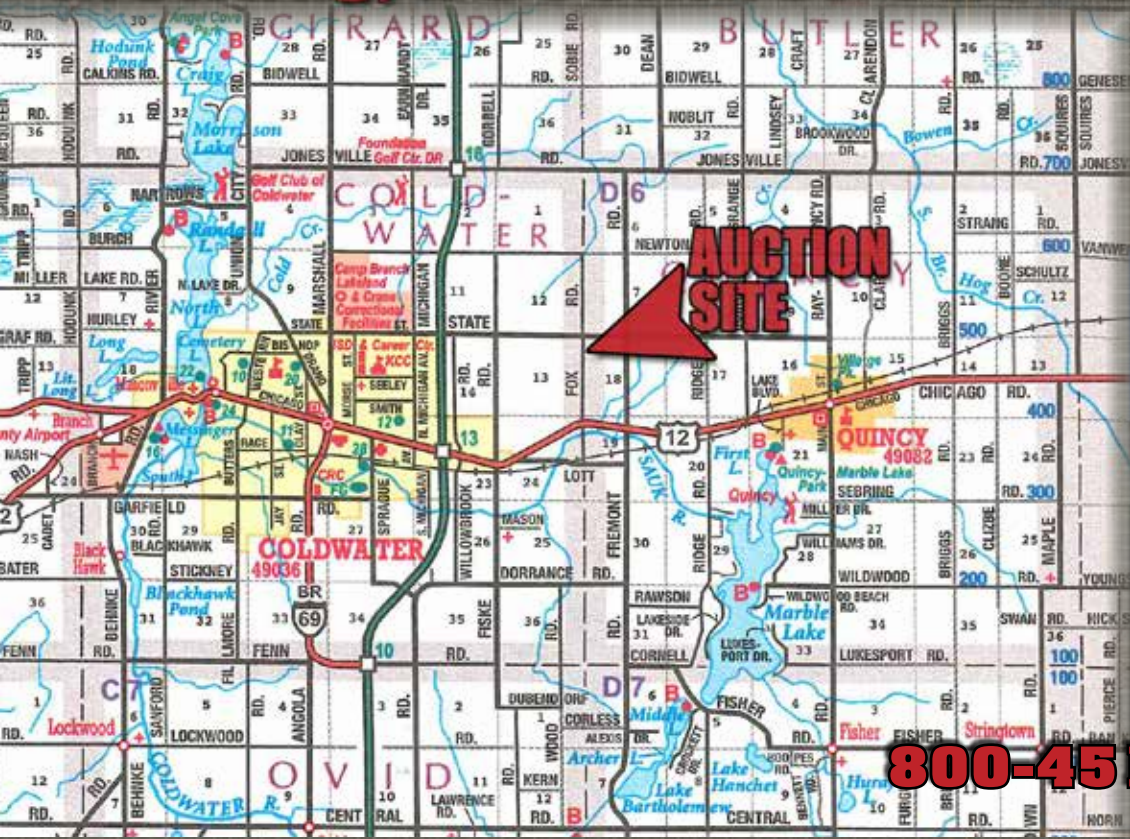


**Monday, December 9th • 10:30am**



**LOCATION:** 491 N Fox Rd, Coldwater, MI 49036. From Exit 13, I-69 & US 12 at Coldwater travel East on US 12 approx 1.7 miles to Fox Rd turn North (left) travel approx 0.9 miles to auction site.

**INSPECTION DATE:**  
Saturday, December 7th • 9:00am - 3:00pm



**800-451-2709 • SchraderAuction.com**



**CORPORATE HEADQUARTERS:**  
950 N. Liberty Dr., Columbia City, IN 46725



# farm equipment

Branch County, MI

**LIVE INTERNET BIDDING**  
Visit [SchraderAuction.com](http://SchraderAuction.com) for Details or call 800-451-2709.

**AUCTION MANAGER:**  
**RITTER COX,**  
**260-609-3306**

Schrader Real Estate and Auction Company Inc., 6505397356

**TERMS:** Cash or Check w/proper ID.  
3% surcharge fee for credit cards.  
Announcements made the day of the auction take precedence over any printed material. Not responsible for accidents.

\*Internet Buyer's Premium is 2.5% capped at USD \$750 per lot for Auction Items.

DECEMBER 2024						
SUN	MON	TUE	WED	THU	FRI	SAT
1	2	3	4	5	6	7
8	9	10	11	12	13	14
15	16	17	18	19	20	21
22	23	24	25	26	27	28
29	30	31				

Follow us on:

**800-451-2709**  
**SchraderAuction.com**

- TRACTORS
- JD DOZER
- COMBINE
- DRAPER • HEAD
- SPRAYER • PLANTER
- NO-TILL DRILL
- MISC TILLAGE EQUIP
- LIVESTOCK EQUIP
- ANTIQUE TRACTOR
- & BULLDOZER
- GRAVITY WAGONS
- GRAIN BINS
- DRYER • AUGERS
- FARM RELATED ITEMS

**LIVE INTERNET BIDDING**  
Visit [SchraderAuction.com](http://SchraderAuction.com) for Details or call 800-451-2709.



**800-451-2709**  
**SchraderAuction.com**

**Monday, December 9th • 10:30am**

Branch County, MI



# farm equipment

**Monday, December 9th • 10:30am**

Branch County, MI

# farm equipment

**LOCATION: 491 N Fox Rd, Coldwater, MI 49036.** From Exit 13, I-69 & US 12 at Coldwater travel East on US 12 approx 1.7 miles to Fox Rd turn North (left) travel approx 0.9 miles to auction site.

**INSPECTION DATE:**

**Saturday, December 7th • 9:00am - 3:00pm**

• **2012 CHALLENGER MT675D TRACTOR**  
• **1995 WHITE 6125 TRACTOR • 1996 MF 6180 TRACTOR • 2001 JD 650 H LT DOZER • 2009 CHALLENGER 680B COMBINE • 40' MF 9250 DRAPER • AGCO CORN HEAD**

• **2012 Challenger MT 675D MFWD tractor**, 480/80R50 tires & hub duals, 420/85R34 fronts & hub duals, CVT trans, 4 remotes, power beyond, 3pt & coupler, hyd cab, Command screen, pto rear & front weights, 3342 hrs

• **1995 White 6125 MFWD tractor**, 18.4R42 tires, 420/85R28 fronts, 3 remotes, 3pt & coupler, pto, 7327 hrs, (2nd owner & serviced)

• **1996 MF 6180 MFWD tractor**, Dyna Shift, 480/80R38 tires, 380/85R28 fronts, 2 remotes, 3pt, pto w/Westendorf loader, joy stick, material bucket, large material bucket, pallet forks & 10' snowblade, 4544 hrs (2nd owner)

• **2001 JD 650H LT dozer**, 6 way blade, new seat & cutting edge, 3501 hrs

• **NH LX665 Turbo diesel skid loader**, material bucket

• **2009 Challenger 680B combine**, Beacons, Command screen, 520/85R42 straddle duals, 750/65R26 rears, deluxe cab, deluxe lighting, lateral tilt, chopper, chaff spreader, extra long unload, Ag Leader wired, (recent rebuild), 3163 eng hrs

• **2010 40' MF 9250 Dyna Flex draper head**, flip over reel

• **40' EZ Trail head cart**

• **2001 Agco corn head**, 8x30, adj deck plates, Knife rolls, stalk stompers

• **Unverferth HT25 head cart**

• **ROGATOR 854 SPRAYER • 40' GREAT PLAINS 1625A PLANTER • 30' CRUSTBUSTER NO-TILL DRILL • MISC TILLAGE EQUIPMENT**

• **LIVESTOCK EQUIPMENT**

• **Rogator 854 sprayer**, 380/90R46 tires, adj tread width, 750 gal SS tank, 90' hyd fold booms, triple nozzles, Raven controller, Ag Leader light bar & EZ guide Plus, foamer, 5964 hrs

• **40' Great Plains Yield Pro 1625A planter**, hyd FF, 16x32 twin row units, vacuum meters, row cleaners, no-till, seed firmers, liquid fert 2x2 plus in-furrow, spike closing wheels, markers, multiple seed discs

• **30' Crust Buster 4025 no-till drill**, hyd FF, 10" spacing, seed firmers, markers, starter fert & harrow (rebuilt)

• **Oliver grain drill**, 17 hole

• **21' White 273 disc**, rock flex, hyd fold, rear hitch

• **Glencoe soil saver**, 9 shank

• **McKee rock picker**, pull type w/reel

• **8' Schulte 9600 snowblower**, 3pt, hyd spout

• **10' Box scraper** pull type

• **2007 Adams alum livestock trailer**, 6'x16' center gate, rear gate, section gates, side door

• **Artz Way 500A grinder mixer**, hyd auger, corn conveyor w/scales

• **8' Alum livestock topper** w/rear doors

• **(3) Pax feed bins**, 1 w/auger & motor

• **(4) 5' SS double sided hog feeders**

• **Calumet liquid manure tanker** w/vacuum pump & injectors

• **6'x12' Hyd hog trailer**

• **SS hog feeders**

• **Hog waterers**

• **40' NI double chain elevator**

• **Misc Tender foot**

• **ANTIQUE TRACTOR & BULLDOZERS**  
• **GRAVITY WAGONS • GRAIN BINS • DRYER**  
• **AUGERS • FARM RELATED**

• **Silver King gas tractor**, 11.2-38 tires, pto (blown head gasket)

• **Cletrac gas pto** (been restored)

• **Cat C2 crawler dozer** (process of being restored)

• **Cat dozer no motor** (process of being restored)

• **IH TD9 dozer** (for parts) w/spare block pistons & injector pump

• **Hit & Miss motors**

• **Fricklin 4500 seed wagon** w/gear 295/75R22.5 tires, roll tarp, 3 compartment w/15' hyd seed auger, plastic cup

• **Killbros 555 gravity wagon** w/KB gear, brakes, roll tarp, cement tires, lights

• **Parker 650 gravity wagon** w/Parker gear, brakes, cement tires, lights

• **(3) J&M 500 SD gravity wagons**, J&M 15 ton gears, cement tires, lights

• **Nurse wagon 1025 poly tank** w/6.5hp motor & pump

• **Brock 7500 bu hopper bin** w/aeration (like new)

• **(4) 10,000 bu grain bins** (2 are Circle) w/aeration & unloads

• **7500 bu grain bin** w/aeration & unload

• **(2) 5000 bu grain bins** w/aeration & unloads

• **2500 bu hopper tank** w/aeration

• **(2) 85' Grain legs**, galvanized, 3500 bu hr, w/downspouts & 7 hole distributor, 3ph

• **98' Paddle conveyor**, 3ph

• **Farm Fans CF/AB 270 grain dryer**, 1ph, LP w/Gleaner & blower, 7828 hrs

• **(2) 8'x30' augers** w/3ph motors

• **6'x30' wet bin auger** w/1ph motor

• **Leg belt & buckets**

• **1'x13' paddle conveyor**

• **(3) Large centrifugal fans**

• **Small centrifugal fan**

• **16" x 50' paddle conveyor** dump pit

• **10" x 41' Westfield load out auger** w/10hp 1ph motor

• **10" x 61' Feterl grain auger**, hyd raise

• **Dickey John GAC 2000 moisture tester**

• **Virnig grapple bucket**, quick tach

• **Bale spear**, quick tach

• **Kubota grass catcher**

• **(2) 300 gal front mtd fert tanks** w/brackets

• **Approx 8000 gal steel tank** w/cradles

• **(8) 2500 gal poly tanks**, flat bottoms

• **5000 gal poly tank**, flat bottom

• **3000 gal poly tank**, flat bottom

• **(2) mini bulks**

• **1050 gal poly tank** flat bottom

• **550 gal poly tank** flat bottom

• **Multiple totes** w/fert

• **1000 gal fuel tank** w/pump

• **500 gal fuel tank** w/pump

• **Chemical mix station**

gas motor & pump

• **Air compressors**

• **Misc 1ph & 3ph**

motors

• **Many other items**

due to farming

**OWNERS: Estate of John Edward Sherman, Jr**  
**SALE MANAGER: Ritter Cox, 260-609-3306**

**SCHRADER**  
Real Estate and Auction Company, Inc.

**800-451-2709**  
**SchraderAuction.com**

**LIVE INTERNET BIDDING**  
Visit [SchraderAuction.com](http://SchraderAuction.com) for Details  
or call 800-451-2709.