

Online Only AUCTION PERSONAL PROPERTY #2

Ligonier, Indiana • Noble County
LOTS START CLOSING @ 5PM
THURSDAY, OCTOBER 24TH

PREVIEW:

Wednesday, October 23rd • 4pm-6pm

Location: 695 W. Perry Road, Ligonier, IN 46767

Directions: From the intersection of Cavin Street and North Street (SR 5) on the north side of Ligonier follow SR 5 North 1 mile to Perry Road then turn west 1 mile to the property.

Catalogs and Absentee Bid Forms Available



ANTIQUES/HOUSEHOLD/COLLECTIBLES

- 2016 Kenmore Elite Stainless-Steel Refrigerator • 2022 Samsung Front Load Washer & Electric Dryer • Philip Dorner's Sons Co. Frankfort, IN. Buggy Seat • **Cast Stoves:** Queen No. 28 W.D. Sager Chicago ILL., North Manchester No. 28, Wedgewood Charm No. 516A • **Traffic Light** • Oil Bottles & Carrier • **Wicker Market Cart** • Mustang Advertising Sign • Toboggan • 30+ Blow Torches • Pulleys • 20+ Oilers • Milk Cans • Galvanized Tubs • Copper Boiler Pot • Pitcher Pumps • The Corey Cast Fire Hydrant • **Antique Lightning Rods** w/Milk Glass & Purple/Amethyst Balls • USA No. 2 Bell • Cast Iron Kettle w/Bale, 26" • Pedal Sharpening Stone • Chicken Crates • Parking Meters • IH Pony Corn Sheller - Keystone Corn Machines • Metal Patio Chairs • **Antique Trunks** • **Tonka:** Crane, Payloader & Dump Truck • 1920's-1960's, 1925, 1931 & 1949 Indiana Matching License Plates • **Bicycles:** Yellow Schwinn Breeze, Columbia Tourist 3, Road Master 15 Speed, Mongoose XR75 21 Speed, Free Spirit Crestwood 18 Speed, Murray Baha, Schwinn Collegiate, Murray MT Climber 10 Speed, Free Spirit Highlander 15 Speed • **Barbie & Midge** Doll Case, 1960's Barbies, Skipper & Ken Dolls, Clothing & Accessories • **Fishing Supplies:** Shakespeare, Ted Williams, Southbend, Dolphin No. 40 & Zebco Reels/Rods, Lures, Tackle Box & Misc. • **Antique American Standard Planter** & Buck Saws

SHOP/LAWN & GARDEN

- John Deere X540 Riding Mower, Hyd. Drive, Multi-Terrain, 54" Deck, 1444 hrs., Liquid Cooled, 26hp Kawasaki Motor • Trac Vac Mod. 880, w/ B & S 8.0 hp Motor • Ranch King 42" Pull Behind Lawn Sweep • Pull Behind 34" Thatcher • Craftsman II Pull Behind Lawn Seeder • Craftsman 5 hp 24" Front Tine Tiller • P-K 25 Gallon Pull Behind Sprayer • Simplicity SS822E Snowblower • MTD Yard Machine 20" Push Mower • Craftsman 22" Push Mower • Generac SVP-5000 Model 09719-2 Generator • Torch Set on Stand • Lincoln AC 180 AMP ARC Welder • Sears/Craftsman 10" Radial Arm Saw • Craftsman 1 1/2hp Router/Table & Accessories • Sprunger 20" Scroll Saw • Ryobi 10" Compound Miter Saw • Bico 5 Speed Drill Press • Columbia Model 7310 Bench Grinder • SIM-115A Angle Grinder •

- Makita Model 6300LR 1/2" Angle Drill • Makita Model JR3000V Recipro Saw • Universal Tools UT-2208 3/8" Ratchet Wrench • MIT Mechanics Torque Wrench • SK 42470 Socket Set • Corded Tools • Workbench • Stop Signs • DeWalt DW935 14.4V Trim Saw • Homelite HT-17 Hedge Trimmer • 2003 Excalibur 18" Trimmer • Echo PB-210E Blower • Echo CS-306 Chainsaw & Accessories • Huot 2-Stack Toolbox • Anvil Vise • Jacks • Yard Tools • **Yard Art:** Cement Figurines, Urns, Bird Baths, Garden Bench, Pebble Stone Bird Bath & Planters, Plant Stands, Watering Cans, Adirondack Wood Patio Set, Outdoor Clay Chiminea, Cast Garden Bench, Sap Buckets • 7' Windmill • Charcoal Grill • **Antique Garden** Plows • Pr. of Red Oars • Metal, Plastic & Wood Patio Furniture • Animal Traps • **Chicken Supplies:** Feeders, Waterer, Buckets, Stakes & Misc. • Werner 14', 16' & 21' Aluminum Extension Ladders • Wood Ladders • Fire Extinguishers • Chains • Shelby Model 5757 750LB Trailer Jack • Wheel Chocks • Fuel Cans • Farm Innovators De-Icer Model H-429 • Organizers & Contents • Red-Brand Electric Fence Galvanized Wire & Insulators • 15 1/2 High Tensile Barbwire • No. 04 Columbian 4" Anvil Vise • Drill Press Vises • Rigid Pipe Wrenches • 16 Gallon Shop-Vac • Master Mechanic 5 Gallon Shop Vac • Hand Truck • Central Hydraulics 2 1/4 Ton Floor Jack • Medium Duty Shelving • Teel Model 2P002B Hand Pump & Barrel • Plywood Sheeting & Lumber • GUNK Mini Tank GT-10 Parts Wash/Cabinet on Wheels • Rolatape Model MM-30 Measuring Systems

PETROLIANA/PEDAL CARS

- Gulf Transmission Fluid Barrel w/Aro Equipment Corp. Bryan, Ohio Hand Pump • Gulf G&S Model 32-106H393097 Lubester Oil Pump • 1969 Gulf Gas Pump • Gulf Advertising Farm Grease, Gulfspray, Chrome Polish, Lock-Ease, Outboard Motor, Household Oils & Gas Cans • Gulf Tire Holder • Veedol Oil Can • Goodyear Auto-Wax • Amoco Permalube Wheel Bearing Grease Can • Delco Shock Advertising Display Cabinet • 20+ Pedal Cars: Mercedes 500 SEC, MTD, Murray Trac

SEE WEBSITE FOR MORE PHOTOS



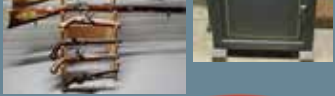
Call 800-451-2709 or Visit SchraderAuction.com for updates & Bidding Instructions

Online Only AUCTION PERSONAL PROPERTY #2

Ligonier, Indiana • Noble County
LOTS START CLOSING @ 5PM
THURSDAY, OCTOBER 24TH

Auctioneers Note: Gillespie Part II Auction!

Don't Miss This Opportunity to Bid on Hobby Farm Equipment, Tractor, Classic Car & Parts, Petroliana, Pedal Cars, Shop, Lawn & Garden, Firearms/Firearms Related, Safe, Antiques & Much More!



Pedal Tractor w/Dump Trac Trailer, GT Co., Radio Sports Car, AMF Junior Mustang, Yellow Taxi, 1955 Chevy Bel Air, Fire Engine No. 7, Fire Chief No. 512, Volunteer Fire Department Truck No. 1, (2) Fire Fighter No. 508, Fire & Rescue Engine No. 07, Fire Truck No. 287, Ford & Murray Fire Trucks

CLASSIC CAR

• **1949 Ford Deluxe Convertible**, w/1951 Mercury Flathead Motor, Shows 79090 Miles, Restored, S/N899A2148174, Stored Inside, Running Condition, Indiana Title & Bill of Sale

CAR PARTS/ACCESSORIES/SHOP

• **5000 Lb. KwikLift**, 14' 10" x 76", Adjustable Length • **Grip Engine Stand** • **Engine Hoist** • **1947-48 Ford Trim/Molding** • **1971-73 Mustang Dash Pad** • **Engine Cooling Fans** • **Carburetors:** Ford EAB, Holly AA-1, Stromberg 97, Ford 59, Ford 94, 1960's Mustang 2 Barrel C6APB, Holley 600 CFM, Rochester Quadrajel • ***NEW* 1965 Mustang Master Cylinder** • **Holley 750 Model 4150 Double Pump Carburetor** • **Oil, Temp & Ammeter Gauges** • **1973 Ford 351 Cleveland 4 BBL Intake** • **1971 Ford 400ci Heads** • **1956 Chrome Parking Light Plates** • **Arm Rests** • **1948 Ford Speedometer**, Waltham Watch Co. • **1948 Ford Rear Fender Stone Shields** • **Ford Chrome Oil Pans** • **V8 Ford Hood Ornament** • **1970's Philco/Ford Radios** • **1956 Chevrolet Headlite Bezels** • **14" Tire Cover** • **Mallory Dual-Point Ignition** • **1948 Ford Dash Gauges** • **1948 Ford External Oil Filter** • **New 1969 Corvette Master Cylinder** • **Uniden PC66XL CB Radio** • **1971-73 Mustang Rear Glass Panels** • **Hubcaps** • **Mastercraft P215/60 R14 Tires/Rims** • **Cummins & Point Dwell Testers** • **Ford Oiler & Wrenches** • **Shop/Service Manuals:** 1950's Ford, 1960's Fisher, Cadillac, Carter, Vega, Mustang, Austin-Healey & 1960's Gulf & Misc.

FORD TRACTOR/IMPLEMENTS

• **Ford 3000 Tractor**, WF, Gas, 540 PTO, 3 Pt. 6.50-16SL Fronts, Firestone 13.6-28 Rears, shows 1982 hrs, Battery 8/21, Restored, S/N C5NN 6015 • **Kodiak 6' Rotary Mower** • **McCormick Manure Spreader** • **3 Pt. Boom** • **2R Tractor Weights** • **Drawbar Attachment**

OWNER: Donald & Rosemary Gillespie Estate
AUCTION MANAGER: Phil Wolfe, 260-248-1191

PISTOL/REVOLVERS/RIFLES/ BLACK POWDER/SAFE

• **Davis Mod. P32 Auto Pistol** • **Stevens M25B Bolt Action 20 GA. Shotgun** • **H&R Topper Mod. 58 .410 Single Shot Shotgun** • **Springfield Mod. 120A .22 SL/LR Rifle** • **Savage Mod. 64 .22LR Rifle w/Weaver Scope** • **FL .22 Hex Barrel Single Shot Rifle** • **Ardesa-Spain .50 CAL BP Rifle** • **Armsport .54 CAL BP** • **GR Tower Japan HAWES Flintlock Pistol** • **Belgium US Harpers Ferry 1807 Flintlock Pistol** • **Connecticut Valley Arms 50 CAL BP Pistol** • **F. LLI PIETTA-ITALY .44 CAL Cap/Ball Revolver** • **H&R Mod. 929 .22 CAL Revolver** • **Frontier Safe Co. Model P1530 Gun Safe**

AMMO/BAYONET/ACCESSORIES

• **16 & 20 GA, .22. 7.62X39, .410** • **Gun Cleaning Kits** • **Ammo Boxes** • **AS. FA Bayonet**, Askari Fabrika (military factory) • **Collector Knives**

COINS/CURRENCY

• **1935G & 1957A Silver Certificates** • **Buffalo Nickles** • **Standing Liberty Quarters** • **Barber Half Dollar** • **Wheat Pennies** • **Mercury Dimes** • **Bicentennial Quarters**

PAYMENT: Payments may be made Online or Onsite in the forms of Cash, Check or Credit Card (3.0% surcharge applies) on **Friday, October 25th • 1pm-6pm.** Or by **Calling Main Office at Regular Business Hours: Friday, October 25th • 8am-5pm or Saturday, October 26th • 9am-11am.** **Onsite Payments: Friday, October 25th • 1pm-6pm or Saturday, October 26th • 9am-11am!** **ALL Payments to be Made by 11am Saturday, October 26th! • 10% Buyers Premium Applies..**

****Payments not made by Saturday, October 26th • 12 Noon will be automatically run via the credit card on file.****
LOAD OUT: 2 Day Load Out!! Friday, October 25th • 1pm-6pm & Saturday, October 26th • 9am-11am.

Plan accordingly, Staff is limited/Come prepared/Auction Company does not provide boxes, packing, hand trucks or provide staff for loading of furniture & large items, Come prepared!
FIREARMS: Handled by ADT Firearms, 6009 E 1000 N, Syracuse, IN 46567. Excluding Black Powder. \$25 Transfer Fee Applies. (574) 457-9012

SHIPPING: Shipping is available through 3rd Party Shipper, Columbia City Goin Postal, 1080 Spartan Drive Suite A, Columbia City, IN 46725 • 260-248-8608, Call for Quote Prior to Bidding. ALL Shipping & Handling costs are the responsibility of the Buyer and said Shipping/Handling Is Between Buyer & Goin Postal, Not the Auction Company.



Phillip John Wolfe, AU19900139 • Schrader Real Estate and Auction Company, Inc., AC63001504

Call 800-451-2709 or Visit SchraderAuction.com for updates & Bidding Instructions