

- 15± Acres of Ideal Pasture
- House, Barn, Shed
- 2 Ponds
- Great Highway Access on Highway 81
- 52'x32' Shed
- Well added in 2018
- Perfect for Raising a Variety of Livestock



**17±
acres**



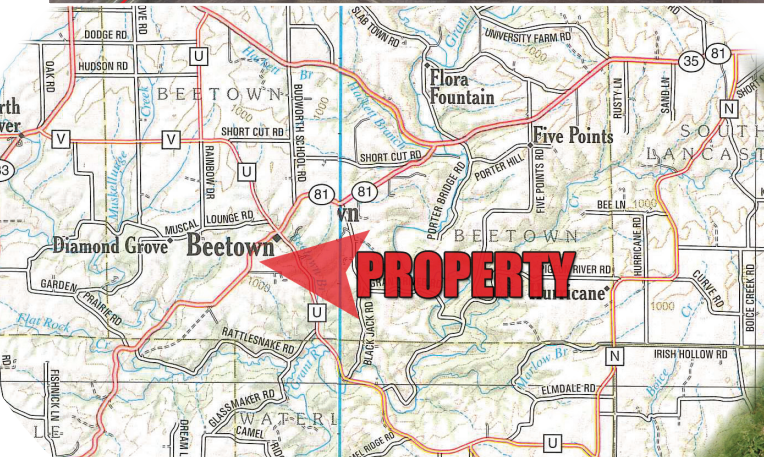
PROPERTY DESCRIPTION:

Whether looking for a homestead, farmette or an affordable way to start farming, this 17± acre property offers just the right size for a variety of interests. The building site contains a 2-story house, a shed and barn with great access to Highway 81. Perfect for any type of livestock from cattle, sheep, or horses, the 15± acre pasture lays nicely with 2 ponds to provide a natural source of water. There is plenty of room for growing a beautiful garden and to raise your own chickens. The house and buildings sit in the front corner of the property creating an ideal balance of having livestock close-by but enough separation for when you need some time to yourself. Enjoy green pastures and country living on this affordable piece of Grant County.

HOUSE:
 2 Bed; 2 Bath
 Approximately 2,200 sq ft
 Newer Well (2018)
 No Electricity
 No Furnace/AC

SHED:
 Dimensions - 52'x32'

BARN:
 Dimensions - 56'x41'; 44'x40'



The information on this sheet is subject to verification and no liability for errors or omissions is assumed by the Schrader Agency.

Miller • CH17G-WI