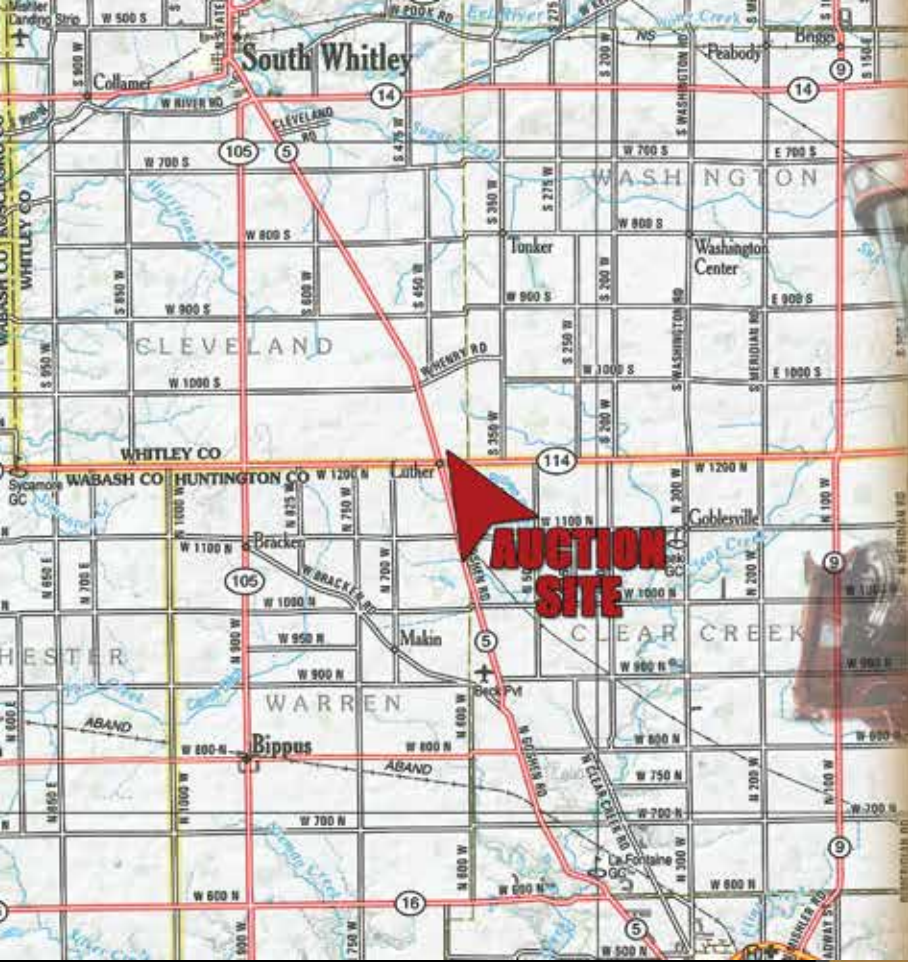


Saturday, April 13<sup>th</sup> • 10:30am

AUCTION LOCATION: 4346 W SR 114, SOUTH WHITLEY, IN 46787

• LIVE ONSITE and ONLINE BIDDING AVAILABLE •



**SCHRADER**  
Real Estate and Auction Company, Inc.

800-451-2709 • [SchraderAuction.com](http://SchraderAuction.com)

**SCHRADER**  
Real Estate and Auction Company, Inc.

CORPORATE HEADQUARTERS:  
950 N. Liberty Dr., Columbia City, IN 46725

**AUCTION MANAGERS:**  
**RITTER COX,**  
**260-609-3306**  
**PHIL WOLFE,**  
**260-248-1191**

AC63001504, AU08600254, AU19900139

**TERMS:** Cash or Check w/proper ID. 3% surcharge fee for credit cards. Announcements made the day of the auction take precedence over any printed material. Not responsible for accidents.

\*10% Buyer's Premium per lot on Timed Online Items.

Follow us on:

**800-451-2709**  
**SchraderAuction.com**

*farm equipment*  
**AUCTION**  
Rupley Estate

Whitley County, IN

**LIVE INTERNET BIDDING**  
Visit [SchraderAuction.com](http://SchraderAuction.com) for Details or call 800-451-2709.



APRIL 2024						
SUN	MON	TUE	WED	THU	FRI	SAT
	1	2	3	4	5	6
7	8	9	10	11	12	13
14	15	16	17	18	19	20
21	22	23	24	25	26	27
28	29	30				

**TIMED ONLINE BIDDING ENDS at 5PM EST**

Whitley County, IN

4346 W SR 114  
South Whitley, IN 46787

- COMBINE • TRACTORS
- GRAIN TRUCK
- TILLAGE EQUIPMENT
- PLANTING EQUIPMENT
- LIVESTOCK EQUIPMENT
- TRAILERS • UTV • TRUCK
- MISC FARM RELATED
- SHOP • LAWN • GARDEN
- TOYS



*farm equipment*  
**AUCTION**  
Rupley Estate

**SCHRADER**  
THE ORIGINAL MULTI-TRACT AUCTIONS



800-451-2709 • [SchraderAuction.com](http://SchraderAuction.com)

**LIVE INTERNET BIDDING**  
Visit [SchraderAuction.com](http://SchraderAuction.com) for Details or call 800-451-2709.

Saturday, April 13<sup>th</sup> • 10:30am



# farm equipment AUCTION

Rupley Estate  
Saturday, April 13<sup>th</sup> • 10:30am

**AUCTION LOCATION: 4346 W SR 114, SOUTH WHITLEY, IN 46787**

• LIVE ONSITE and ONLINE BIDDING AVAILABLE •



**LIVE INTERNET BIDDING**

Visit [SchraderAuction.com](http://SchraderAuction.com) for Details  
or call 800-451-2709.



**• CASE 2670 • CASE 2590 • CASE 1030 • CASE 450C  
• TILLAGE EQUIPMENT • PLANTING EQUIPMENT  
• LIVESTOCK EQUIPMENT •**

- 1976 Case 2670 4x4 tractor, 23.1-30 tires & 18.4-34 T-rail duals, 2 remotes, 3pt
- 1979 Case 2590 tractor, 20.8-38 tires & T-rail duals, 4 remotes, 3pt, pto, 4831 hrs (Power shift not working)
- 1969 Case 1030 diesel tractor, WF, 18.4-34 tires, 2 remotes, 3pt, pto, 9350 hrs
- Set of 18.4-34 duals
- Case 450c diesel bulldozer, 6 way blade, 6853 hrs (complete engine overhaul less than 10 hrs)
- 26' Wilrich DC II soil finisher, hyd fold, hyd disc, gauge wheels w/3 bar harrow & single basket
- 25' Wilrich 3400 soil finisher, hyd fold, gauge wheels w/5 bar harrow
- 22' Brillion cultimulcher, hyd fold & hyd teeth
- 20' IH 496 disc, rock flex, hyd fold, 19.5" blades, 1 bar harrow
- Sunflower 4511 disc chisel, 11 shank, hyd disc
- JD 7240 8/15 planter, no till, liquid fert, markers w/monitor
- JD 7000 planter, 8x30, liquid single disc, no till, fold down markers, insect w/monitor
- Nurse trailer, 1000 gal poly tank, tandem, motor & pump
- 9' C-IH 1300 sickle bar mower, 3pt
- IH cultivator, 6x30
- NI manure spreader, single axle, double beater
- Better Bilt Model 1100 Honey wagon
- 40' NI double chain elevator, elec drive (nice)
- Small gravity wagon w/gear
- J&M 350-20 gravity wagon w/J&M gear, 11R-22.5 tires
- Several 2500 gal flat bottom poly tank
- 10"x73' Westfield MKX100-73 swing away auger, pto, (like new)
- 6"x20' load out auger w/elec motor

**• C-IH 7088 • 30' C-IH 3020 • (2) GRAIN TRUCKS  
• BARRETT LIVESTOCK TRAILER • PJ TRAILER  
• CUB CADET UTV • CHEVY 2500 PICKUP  
• MISC FARM RELATED •**

- 2011 C-IH 7088 AFS combine, 520/85R-38 straddle duals, 540/65R30 rears, Field Tracker, rock trap, monitor w/screen, 2828 eng hrs, 2167 sep hrs
- 2019 30' C-IH 3020 flex head, Terra Flex, Field Tracker, hyd fore - aft, light package (low acres)
- 30' Unverferth HT30 head cart
- 2000 Freightliner FL112 grain truck, live tandem, CAT power, 10sp w/20' Scott alum bed & hoist, cargo doors, rear hitch, 263,571 miles
- 1988 GMC 7000 grain truck, V8, 5 & 2 sp w/like new 16' Knapheide bed & hoist, roll tarp, 93,492 miles
- 27' Barrett livestock trailer, 20' floor, center gate, side & rear door, storage & nose (lots of updates)
- 25' PJ gooseneck trailer, dual tandems, 20' bed w/5' beaver tail & ramps
- 2015 Chevy 2500 HD pickup, 4x4, regular cab, auto w/Western snow plow, 100,426 miles, no AC, (1 owner)
- Cub Cadet Volunteer UTV, 624cc, 4x4, 243 miles
- Ex Mark Zero-turn lawn mower

**• SHOP • LAWN • GARDEN •**

- Hay wagon w/John Deere running gear • Hay wagon w/Lundell running gear • Fillrite fuel tank pump (new) • Moisture testers • (15+) tube livestock gates • 18' gates • Feeders • Waterers • Galvanized water tanks • Pallet racking • Torch set on cart • Portable battery charger • Chains/binders • Caution triangles • Tile probes • Large quantity yard tools (some new) • Shop heater • Corded tools • Open/Closed end wrenches • Pic-A-Nut hardware cabinet & shelf • Misc tractor/implement parts • Drill press • Tire changer • DeWalt cordless tools • Antique floor safe • Extension & wood ladders • Cement trough/tools • Semi ramp • Farm chemicals • Apple/fruit baskets/crates • Large quantity scrap • Antique heavy duty jacks • 2 wheel dolly

**• TOYS •**

- C-IH Magnum pedal tractor • JD & IH gravity wagons for pedal tractors • (12) Ertl toy tractors w/original boxes

**INSPECTION DATE & TIME:  
FRIDAY, APRIL 12<sup>TH</sup> • 9AM - 3PM**



**Timed Online Only**  
**AUCTION**  
Rupley Estate  
Lots Start Closing:  
Saturday, April 13<sup>th</sup> • 5pm

**SELLING SUV • ANTIQUES • COINS/  
CURRENCY • LOCAL FARM/SEED  
ADVERTISING • FIREARMS • SHOP  
• LAWN & GARDEN • APPLIANCES  
• HOUSEHOLD & MORE  
• OVER 350 LOTS!**



**SELLER: MILT RUPLEY ESTATE  
AUCTION MANAGERS:  
RITTER COX, 260-609-3306  
PHIL WOLFE, 260-248-1191**