

# Lots Start Closing at 5pm: Tuesday, April 16<sup>th</sup>

**LOCATION: 7518 N Brown Road, Columbia City, IN. 46725 (Loon Lake)**

**DIRECTIONS:** From the Intersection of SR 109 N & County Rd 700 N (Big Lake): Travel West on 700 N approximately 2.8 miles to N Brown Road, turn North (Right) onto N Brown Road. Travel approximately .5 miles, property on East (Right) side of road (Follow Signs). **Absentee Bid Forms Available.**



## ANTIQUES • HOUSEHOLD • COLLECTIBLES

• **Kenmore Series 400** Top-Load Electric Washer & Dryer • **Gold Gilt/Hand Painted** Decanter Set • **Noritake 6216 Rosay China** Dinnerware Set • **Vintage Wonder Rawhide** Collierville, Tenn. Spring Rocking Horse • **Corner Entertainment Center** • **Livingston Plum** Floral-Patterned Sofa • **Bucham Oak Rocker/Glider** • **Oak Dining Room Table** & 4 Spindle Back Chairs • **Ethan Allen Buffet** • **Mission Style Desk** & Office Chair • **French Style Desk** w/Hutch Top & 4 Drawer Dresser • **Vera Bradley Purses/Bags** • **3 Gallon/Stoneware** Crocks • **Vintage Argus C-4** Camera • **NECCHI Model 521FB** & Sewing Basket • **Thomasville Dresser** w/Mirror • **Oak Quilt Rack** • **Sleep Number/Flex Fit iLE** Dual Air King Size Bed • **Anton Schneider Sohne Cuckoo Clock**, new in box • **Floral Leaded Glass Wall Hanging**, 18"x24" • **Hamilton Beach 3 in 1 Slow Cooker**, Breakfast Sandwich Maker & Black & Decker Waffle Maker • **Corningware:** Creations 2.5 QT., 10" Blue Cornflower & Pyrex Terra Earth Covered Baking Dishes • **Member's Mark Cookware Set** • **45+ Longaberger Baskets:** Stair Step, Fall, Family Baskets, 1997 Inaugural & Recipe Baskets • **Hummel:** 1970's Pictures, Price Book, Music Box, Collector Plates & Wall Calendar • **50+ Precious Moments:** Figurines, Collectible Plates, 2004 Wizard of Oz Carousel Collection, Tea Set, Nativity Set • **Department 56/Dickens Village Series:** Kensington Palace, Church of Holy Light, London Skating Club, J.D. Nichols Toy Shop, Gads Hill Palace 6th Edition 1997, Kingsford's Brew House, Lomas LTD Molasses, Leacock Poulterer, Crooked Fence Cottage, Old Michael Church, Ashbury Inn, Little Town of Bethlehem Series • **Thomas Kinkadee:** Lamplight Village Inn, Lamplight Fountain, Bridge, 2000 Olde Porterfield Antique Shop, Windermer Church, Stonebrooke Inn, Lamplight Tea Room, Whiltshire Pastry Shop, Fallbrooke Florist

## BLACK POWDER • AMMO • HUNTING • FISHING

• **Richland Arms Co. Cap & Ball Replica** Revolver 1859 New Model Remington Army 44 CAL Black Powder • **357/158 Grain Bullets**, Casings & 158 JHP WIN Bullets • **Colt 5.56MM** 20 RND Magazine

**PREVIEW:**  
Tuesday, April 16<sup>th</sup>  
1pm-3pm

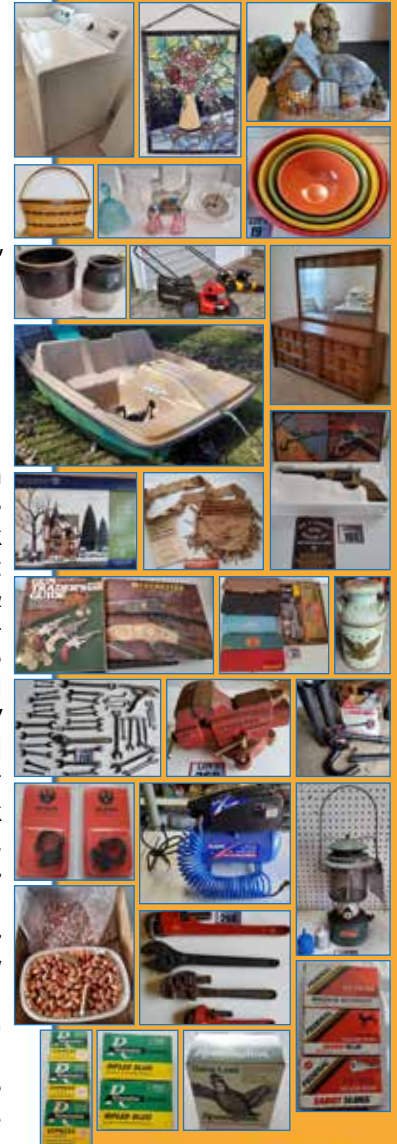
• **Ruger Scope Rings** • **Condor Ear Muffs** • **TC/ Gould Goodrich Holsters** • **Phantom Hunter-Series Predator** Digital Call • **Ultimate Scrape-Dripper** • **Fringed Pouch**, 1964 California Sport Fishing Regulations • **Ammo:** .44 Ammo w/ Case, Winchester/Western, Federal, Remington Express 12GA, Remington/Game Load 16GA, Winchester Super X 20GA • **J. Martini Finland Rapala Fishing Knife** w/Sheath & Misc. Knives & Fish Flashlight • **Cabela's 2XL Hunting Coveralls/Overalls** • **Hunting Vests** • **Plano Air Liner #4588** Plastic Telescoping Rod Case • **4'-8' Telescoping Fish Net** • **Fishing Poles:** Eagle Claw Wright/McGill Denco 801/2' No. 8A & Heddon Stainless Wire Pal 8' 6" No. 8247, Guide Series Graphite Muskie, Silstar 999-66SP, Speedmaster • **10" Pro-Thermal Tip-Up** & Ice Skimmer • **Frabill Flow-Troll Bait Bucket** & 2 Cricket/Bait Tubes

## PADDLE BOAT • MOWERS • SHOP • LAWN & GARDEN

• **8' 5-Person Play Mate Paddle Boat** • **Poulan Pro 21"** Model PR500N21SH Walk Behind Mower • **2019 Craftsman M125** Model 11A-B2A9791 Walk Behind Mower • **Super 250A Poulan** Automatic Chainsaw • **Troy-Bilt Blower/Vacuum TB2BV EC** & Accessories • **Troy-Bilt TB32BV 31CC Blower/Vacuum** • **Echo SRM-225** Weed Eater & Trimmer Line • **Schumacher 12V Battery** Charger • **Campbell Hausfeld 2 Gallon Air Compressor** • **10", 14", 15" & 18" Wrenches** • **Craftsman No. 391-6180 Anvil** Vise 10" • **Craftsman 8 Gallon Shop Vac** & \*NEW\* Filter • **Uniflame Outdoor Grill** & Propane Tank (full) • **Ladders:** Gorilla 6', 12'-24' Extension Ladder, 5' & 8' Aluminum & Wood Ladders • **Wheelbarrow** • **Yard Tools** • **Eden Pure Heaters** • **Michelin Emergency Roadside Kit** • **Black & Decker Battery Operated Drill/Driver** • **SkilSaw Circular Saw** • **Craftsman Buffer/Polisher** • **Sears/Craftsman Router** & Bits • **Perry 2-Ton Hydraulic Jack** • **(10) \*NEW\* Shell Multipurpose Grease Tubes** & Gun • **20V Worx Hydroshot** Battery Powered Portable Power Cleaner • **Tarps** • **BenchTop Pro Tool Set** • **Igloo Marine 3** & Legend 54 Coolers • **& More!**

**Whitley County, IN**  
**Timed Online Only!**

**AUCTION**  
**PERSONAL PROPERTY**



**PAYMENT:** Payments may be made Online or Onsite in the forms of Cash, Check or Credit Card (3% surcharge applies) on **Wednesday, April 17 • 1pm-3pm** or by Calling Main Office for ACH & Credit Card Payments @ Normal Business Hours @ 260-244-7606. **Onsite Payments: Wednesday, April 17 • 1pm-3pm! ALL Payments are to be made by Wednesday, April 17 by 6pm! 10% Buyers Premium Applies.**

\*\*Payments not made by Wednesday, April 17 at 6pm, will be automatically charged with the credit card on file.\*\*

**LOAD OUT: 1 Day Load Out!! Wednesday, April 17 • 1pm-6pm.** Plan accordingly, staff is limited / Come prepared / Auction Company does not provide boxes, packing, hand trucks or provide staff for loading of furniture & large items. Come Prepared! **SHIPPING:** Shipping is available through 3rd Party Shipper, Columbia City GoIn Postal, 1080 Spartan Drive Suite A, Columbia City, IN, 46725. 260-248-8608 Call for Quote Prior to Bidding. *ALL Shipping & Handling costs are the responsibility of the Buyer & GoIn Postal, Not the Auction Company.*

**SELLER: K. Sheets**  
**Auction Manager:**  
**Phil Wolfe,**  
**260-248-1191**  
AC63001504, AU19900139



**800-451-2709 • SchraderAuction.com**