

2024 SCHRADER'S AREA FARMER & CONTRACTORS EQUIPMENT AUCTION



AUCTION

**SATURDAY,
FEBRUARY 24
@ 10:00AM**

**AUCTION SITE (Turkey Farm)
877 E 900 S - CORNER OF
STATE ROAD 9 & 900 S
WHITLEY COUNTY, IN**



**2 FARMER
RETIREMENTS!**



LIVE INTERNET BIDDING
Visit SchraderAuction.com for Details
or call 800-451-2709.

SCHRADER
Real Estate and Auction Company, Inc.

Equipment Added Daily! Visit: www.SchraderAuction.com for Updates!

2024 SCHRADER'S AREA FARMER & CONTRACTORS EQUIPMENT AUCTION

AUCTION

**SATURDAY,
FEBRUARY 24
@ 10:00AM**

**AUCTION LOCATION: 877 E 900 S - CORNER OF STATE ROAD 9 & 900 S
COLUMBIA CITY, IN**

DIRECTIONS: Whitley County. South of Columbia City, IN approximately 8 miles or north of Huntington, IN approximately 9 miles on SR 9 to CR 900 S.

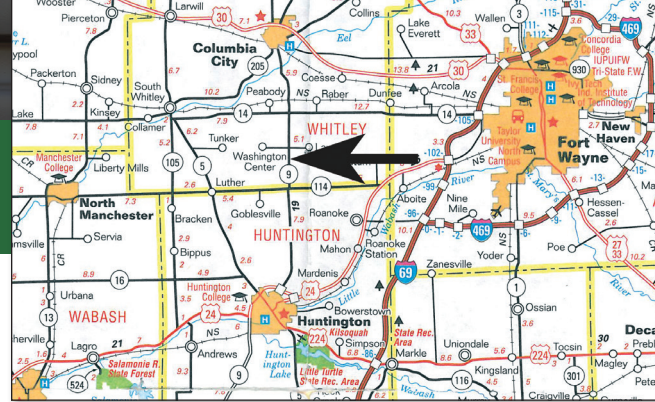
AUCTIONEER'S NOTE: Area farmers & contractors - this is a very large auction! Abbreviated information due to space. Visit website for complete listing, details & photos. Running multiple auction rings, bring friend & trailer. Loading available. No items accepted after 5pm Monday, February 19, 2024.

SALE ORDER: Ring 1 (Starting 10:00am): Native Lumber, Followed by Misc.

Ring 2 (Starting 10:15am): Farm Equipment, Fertilizer Equipment, Trucks & Trailers

Ring 3 (Starting 10:15am): Farm & Hay Equipment, Misc. Equipment

AUCTION MANAGER: Ritter Cox • 800.451.2709 • 260.609.3306 (cell)



ANTIQUE TRACTORS • EQUIPMENT

- **Late 1976 IH 1466 Black Stripe tractor**, diesel, 18.4-38 tires, 4 rib 1100-16 fronts, 3pt, dual pto, 2 remotes, top link, front & rear weights, 4159 hrs, (1 owner) *hard to find*
- **1971 IH 1456 Turbo tractor**, WF, New 18.4-38 tires, 3pt, pto, 2 remotes, front & rear weights, 6429 hrs (excellent)
- **1966 JD 4020 tractor**, diesel, WF, PS, New 18.4-38 tires, 3pt, pto, 1 remote, rear weights, 9785 hrs
- **IH 966 tractor**, diesel, New 18.4-34 tires, 3pt, pto, 2 remotes, 5750 hrs (restored)
- **1974 IH 966 tractor**, diesel, 18.4-38 tires, 3pt, dual pto, 2 remotes, front & rear weights
- **1953 Farmall SMTA tractor**, gas, NF, PS, 14.9-38 tires, pto, 1 remote, fenders, rear weights, live hyd, belt pulley
- **1968 IH 656 tractor**, NF, 15.5-38 tires, 2pt hitch, 2 remotes, rear weights, 1889 hrs (2nd owner)
- **1967 Farmall 656 tractor**, gas, WF, 15.5-38 tires, PS, fast hitch, pto, 2 remotes, 8000 hrs (motor rebuilt 2000 hrs)
- **1955 Farmall 300 tractor**, gas, NF, New 13.6-38 tires, fast hitch, 3pt, 1 remote, (restored)
- **1961 Farmall 560 tractor**, gas, WF, 16.9-38 tires, fast hitch, pto, 2 remotes, rear weights, 3850 hrs
- **1954 Farmall SH tractor**, gas, NF, 13.6-38 tires, pto, 1 remote, fenders
- **1950 Ford 8N tractor**, Flathead V8 power, 100 hp, 13.6-28 tires, Holley 2 barrel rebuild, 3pt, pto (Nut & Bolt restoration)
- **1951 Ford 8N tractor**, Flathead 6 cyl, Sherman trans, 3pt, New 13.6-28 tires, 6.00-16 fronts, 3" chrome stack (restored)
- **1955 Farmall 400 tractor**, gas, WF, New 15.5-38 tires, fast hitch, 1 remote, fenders
- **1956 Farmall 300 tractor**, gas, NF, PS, 13.6-38 tires, fast hitch, 1 remote, fenders, belt pulley (1 owner)
- **1959 Oliver 770 tractor**, gas, NF, 380/80R38 tires, pto, restored
- **1964 Farmall 706 tractor**, diesel, 15.5-38 tires, 3pt, dual pto, 2 remotes, 5899 hrs (weak injector pump)
- **AC D-15 tractor**, gas, NF, 14.9-26 tires, spin out rims, pto, 1 remote, (2287 actual hrs) (2nd owner)
- **1955 Farmall 300 tractor**, gas, NF, 1 remote, pto
- **1947 JD "D" tractor**, gas, 16.9-30 tires, hand clutch, hr meter, elec start
- **1959 Farmall 560 tractor**, gas, WF, 15.5-38 tires, fast hitch, pto, 1 remote, 3719 hrs
- **1939 JD B tractor**, gas, 9.5-36 tires, pto, hand crank

- **1947 Farmall H tractor**, gas, NF, pto, like new rubber
- **Farmall 400 tractor**, gas, NF, pto, 1 remote
- **Farmall F-20 tractor**, gas, NF, new back tires
- **MF 44 tractor**, gas, WF, pto, 1 remote (non-running)
- **Ferguson T020 tractor**, gas, 10-28 tires, 3pt, pto (non-running)

TRACTORS

- **2010 JD 8295 R tractor**, MFWD, 480/80R-50 duals, 380/80R-38 fronts, ILS, PS < 3pt, quick hitch, pto, 4 remotes, Power Beyond, front & rear weights, deluxe lighting, Command screen, auto trac ready, beacon, 5070 hrs (1 owner) (300 hrs on tires)
- **1999 C-IH MX 240 tractor**, MFWD, 18.4-46 hub duals, 14.9-34 fronts, quick hitch, pto, 4 remotes, front & rear weights, 4135 hrs (retirement)
- **1998 C-IH 8940 MFWD tractor**, 18.4R42 hub duals, 380/85R30 fronts, quick hitch, pto, 3 remotes, front weights, 4467 hrs
- **2023 JD 5100 M tractor**, w/JD540 M loader, 320/85R24 fronts, shuttle shift w/left hind reverser, 460/85R30, 2 remotes, 540 pto, 3pt, fender 3pt controls, skid steer hookup, single point hookup, mirrors, air seat, 540 & 540 economy, pto, rear wiper, 118.8 hrs
- **1983 Case 2390 tractor CAH**, 3sp powershift, 20.8R38 hub duals, 14L-16.1 4 rib fronts, quick hitch, small 1000 pto, 2 remotes, 19 front weights, suspension seat, PS has been gone through, newer brakes, 4857 hrs
- **1981 Case 4690 tractor**, 4x4, 23.1-30 tires, 3pt, 4 remotes, 6510 hrs
- **Case 2090 tractor**, 18.4-38 tires, quick hitch, pto, 2 remotes, front weights, New AC, 3566 hrs

UTILITY TRACTORS • SKIDLOADERS FORKLIFTS

- **2019 JCB 270 Trac skid loader**, C.H.A, 2sp, creep speed, radio, quick tach, switchable controls, smooth ride, 78" bucket, 756 hrs (1 owner)
- **2014 MF 1736 utility tractor**, MFWD, diesel, 14.9-24 tires, 10-16.5 NHS fronts, 3pt, pto, pedal forward & reverse, DL 120 loader, joystick, material bucket & forks, only 418 hrs (1 owner)
- **C-IH 595 diesel tractor**, 16.9-30 tires, 4sp w/hi-low, 3pt, dual pto, 2 remotes, C-IH 2255 loader, joystick control, 713 hrs (1 owner)
- **2020 JD 3039 R tractor**, loader 861 hrs
- **2009 Kubota L 3430 HSTC tractor**, diesel, cab, heat, ac, 4x4,

- 3sp hydro, 3pt, pto, mid hyd control, 4186 hrs
- **1995 NH 4630 tractor**, Turbo, 13.6-28 tires, 8sp, 3pt, pto, 1 remote, 1091 hrs
- **JD 5420 tractor**, diesel, 16.9-38 tires, 3pt, quick hitch, pto, 2 remotes, front weights, 502.8 hrs
- **2011 Gehl 3640 E skidloader**, diesel, material bucket, 850 hrs
- **2018 Bobcat S590 skidloader**, hyd coupler 68" material bucket, 5092 hrs
- **2006 Bobcat S130 skid loader**, cab, heat, quick tach, aux hyd, 60" material bucket, 2479 hrs
- **Case 1818 gas skidloader**, material bucket, manure forks, 1136 hrs (1 owner)
- **Case 1818 gas skidloader**, material bucket, 1489hrs
- **2007 NH LS 125 skidloader**, diesel, material bucket, forks, bale mover, manure bucket, 950 hrs
- **Gehl R165 skidloader**, cab, heat, diesel, material bucket, pallet forks, 2351 hrs
- **2019 Bobcat T590 track skidloader**, hyp coupler 72" material bucket, 4543 hrs
- **Case 450 GT skid loader**, diesel, tracs, aux hyd, joystick, forks, detach not working, shows 561.5 hrs (cluster changed 2017)
- **Gehl DL-8L 42 telehandler**, Cummins, 4 wheel steer, 42' reach, 6' forks, 4422 hrs
- **Hyster forklift**, 15 ton, single mast, LP w/tank, shows 665 hrs
- **2023 EG 360 Trac skidloader**, ride on, Gas 120cc, 38" material bucket
- **Hyster forklift**, 8 ton, double mast, auto, LP w/tank, 1765 hrs
- **8' Grouser dozer blade for skidloader**, hyd tilt & angle
- **20,000 lb boom for CAT**
- **4.5' CAT grapple attach**
- **5' CAT HD bucket**
- **6' 4 in I bucket** for skidloader
- **CAT R172 rotary chopper** for skid loader
- **6' Bobcat Brushcut HD rotary mower**, standard flow, chains, (like new)
- **7' Grouser 1300 dozer blade for skid loader**, hyd tilt & angle
- **36' Care tree spade** for skidloader
- **6' Sweepster** for skidloader
- **Cyclone concrete breaker**, hyd, skidloader mount
- **Free stall sander** for skid loader

MORE ITEMS BEING ADDED DAILY THROUGH FEBRUARY 14 CHECK OUR WEBSITE FOR CONTINUAL UPDATES

MANURE • LIVESTOCK HAY EQUIPMENT

- 9.9' JD 630 MoCo discbine, rubber rolls, hyd swing tongue, light kit, (6) turtles, new knives, 31-13.5 tires (excellent)
- 2015 Houle 6000 gal tanker, 725/65-26 tires, top fill, excellent
- 2010 Houle 42' pit pump, hyd control
- 2020 Sitrex ST780H 6 basket tedder, pull type, hyd fold
- NI 3632 manure spreader, tandem axle, sloop gate
- NH 731 manure spreader, tandem axle, sloop gate
- NH 254 double basket hay tedder, 3pt
- Claas 75T Volto tedder, 6 baskets, pull type
- Claas 650 twin rake, 2 baskets, hyd fold, pull type
- 18' Badger forage wagon, tandem gear, 14L-16.1 tires, triple beater, roof included
- NH 660 5'x6' round baler, twine tie, bale ramp, (1 owner)
- 7' H&S hay fluffer/tedder, rubber mount teeth
- NH 716 forage wagon, triple beater, roof
- Jaylor 4405 tub mixer, new SS liner, scales, (nice)
- Rhino 10 wheel hay rake, pull type, hyd fold, (less than 1000 acres)
- Gehl 95 feed grinder, screens, corn drag
- NH 351 manure spreader, single axle
- NH 213 manure spreader, single axle
- NI 206 manure spreader, ground drive, triple beater
- 9' Owatonna haybine, rubber rolls
- JD 660 hay rake, 5 bar, rubber teeth, dolly wheel
- NH 163 hay tedder, 4 basket, hyd fold
- Small manure spreader, ground drive, triple beater
- NH 258 rake, dolly wheel
- Manure pit pump, 9' depth, 5" agitator & pump
- Kid 7-16 bale grinder, 540 pto, discharge both sides & rear
- 9' Gehl 2170 haybine, rubber rolls, hydra swing
- 8'x19' HD hay rack w/JD HD gear, 8 1vg
- 9'x18' flat rack wagon, New bed, JD 1075 gear
- 14.5' flat rack wagon, Gaston gear
- 8'x18' flat rack wagon, Kory gear
- 8'x18' flat rack wagon, JD 1065 gear
- (2) 40' feed wagons
- NI hay rake, rubber teeth
- NI sickle bar mower, pull type
- 16' flat rack wagon w/gear
- Antique hay rake
- JD 5 bar hay rake
- 14' flat rack wagon, JD gear

HARVEST EQUIPMENT GRAIN CARTS • WAGONS • AUGERS

- Unverferth 7250 grain cart, corner auger
- Unverferth GC 650 grain cart, 24.5-32 tires, corner auger
- Parker 6500 grain cart, 24.5-32 tires, light package
- (4) KB 385 gravity wagons, KB 13 ton gears
- Unverferth 325 gravity wagon, KB 1396 gear
- KB 350 gravity wagon, JD 1075 gear
- Parker gravity wagon, gear
- KB 285 gravity wagon, 12 ton Kory gear
- KB 350 gravity wagon, 10 ton gear
- KB 400 center dump wagon, 12 ton gear
- KB 275 gravity wagon, IH gear
- (2) Unverferth 530 gravity wagons, 425/65R22.5 tires, site windows, new door gears 2 yrs ago, New tarps
- 13'x82' Cardinal swing away auger, hyd swing, hyd lift, 540 pto
- 35' Batco belt conveyor, hyd drive
- 35' KSI belt conveyor, Inclinator, hyd drive w/ transport
- 10'x61' Mayrath auger, swing away, pto
- 10'x61' Westfield auger, swing away, pto
- 40' NI double chain elevator
- 10'x61' Westfield swing away auger, hyd raise
- NI No25 corn picker, narrow row, manual
- Little Giant corn drag, elec motor
- 13'x90' Brandt swing away auger, hyd raise
- 2x36' NI corn picker
- 8'x30' load out auger

THESE ITEMS SELL AT TURKEY FARM

LOCATED: 16250 N 800 W, Elwood, IN

- 2013 GSI 12185 Air Stream grain dryer, continuous flow, SS screens, 2 burner, 3ph, LP, Vision 3000 touch screen, 875 bu per hr 5pt removable (1 owner)
- 10'x68' Hutchinson transport auger, top drive, pto
- 8'x28' fill auger, 7.5hp, 3ph, motor

LOCATED: 3700 E 400 S, Columbia City, IN

- 24' Brock grain bin, 7 ring, full floor, sweep & fan, remove by Aug 1, 2024
- 24' Brock grain bin, 8 ring, full floor, sweep & fan, remove by Aug 1, 2024
- 21' BSB grain bin, 7.5 ring, full floor, sweep & fan, remove by Aug 1, 2024

COMBINES • HEADS • HEAD CARTS

- 2015 Claas Lexion 740 TT combine, RWD, 36" Terra Trac, 28L-26 rears, C13 eng, auto fold hopper ext, long unload, APS hybrid, lateral tilt, HD feeder house, Deluxe lighting, beacons, camera, chopper, deluxe chaff spreader, AG Leader auto
- steer, yield monitor, less screen, 1570 eng, 1200 sep, (2nd owner)
- 2022 Claas 830 corn head, 8x30, height sensors, row trac, hyd deck plates, end cones, low acres (1 owner)
- 2009 C-IH 7088 combine, 20.8R-42 straddle duals, 28L-26 rears, chopper, bin ext, wheat concaves, Field Tracker, AFS Pro 600 monitor, 1671 eng, 1082 sep (2nd owner)
- 1991 JD 9500 combine, RWD, 30.5-32 tires, 18.4R-26 rears, bin ext, 2358 eng, 1600 sep
- C-IH 1680 combine, RWD, rock trap, speciality rotor, 4462 eng hrs
- 1997 Case IH 2188 combine, RWD, 73x44.00-32 tires, 18.4-26 rears, rock trap, 4478 eng, 3266 sep
- 1977 JD 6600 diesel combine, 23.1-26 tires, hydro, chopper, chaff spreader, 4140 hrs
- Geringhoff North Star Elite XL corn head, 8x30, end cones, hyd deck plates, power reel, Insight height control
- JD 608C corn head, 6x30, hyd deck plates, single point hook-up, row sense, header height control, stubble lights, 2 stalk stompers
- MF 8560 rotary combine, Cummins, 24.5-32 tires, 14.9-24 rears, hydro, chopper, 3862 hrs
- 2012 35' NH 740CF-35DD Super flex head, Cary air reel, hyd fore & aft
- 35' NH 74C flex head, hyd fore & aft
- Gleaner Huggler 8x30 corn head
- 2007 30' Case IH 1020 flex head, S&K sickle bar knives
- 35' C-IH 2020 flex head, hyd fore & aft, Field Tracker
- JD 925 flex head, hyd fore & aft
- JD 643 corn head, poly conversion
- JD 643 corn head, 6x30, low tin, oil bath
- JD 643 corn head, 6x30, low tin
- JD 443 corn head, 4x30, high tin, restored (new tension springs)
- JD 215 flex head, Johnson rock & dirt guard
- IH 863 corn head, 6x30
- 8x30 Case IH 863 corn head
- 2012 36' Unverferth 636 head cart
- Unverferth HT 30 head cart, lights
- 25' EZ Trail head cart
- 25' C-IH 1020 flex head
- 25' Unverferth HT25 head cart
- 20' homemade head cart
- 20' Killbros head cart
- 25' J&M head cart
- 35' Unverferth HT35 head cart
- 20' MF 9320 grain head, flip over reel
- 36' Unverferth head cart, light package
- 15' head wagon
- C-IH 2206 6x30 head, pto hook-up



For Additional Photos Visit our Website: www.SchraderAuction.com

AUCTION MANAGER: Ritter Cox • 800.451.2709 • 260.609.3306 (cell)



FERTILIZER EQUIPMENT

- **2012 Fast 8224 28% applicator**, 2400 gal, 60', 20" spacing, hyd pump, ISO plug w/Raven rate controller
- **2021 Top Air UTV sprayer**, 250 gal poly, tandem, 60" boom, 20" spacing, 3 sec controller, Honda motor & pump (less than 600 acres)
- **2005 Hardi Commander sprayer**, 1200 gal poly, 320/90R46 tires, adj axle, 90' boom, hyd raise & fold, rinse tank, foamer, 540 pto, Hypro pump, 4 sets of tips, Hardi 4sec controller
- **Hagie 2100 sprayer**, 90' booms, Raven 460 controller & GPS, 3951 hrs
- **Hardi Commander 1200 sprayer**, 1200 gal tank, 120' booms, controller
- **15 knife DMI 5250 NH3 bar**, hyd fold, 100 acres on mole knives & disc sealers, Raven cooler & controller
- **Yetter 1600 gal pull behind fert tank**, all wheel steer, 18.4-26 tires
- **1000 gal poly nurse trailer**, tandem, sump agitation, New Power Pro 6.5 motor & pump
- **11 Knife DMI 3250 NH3 bar**, hyd fold, spring loaded coulters, independent disc sealers, gauge wheels, Sure-Fire liquid system put on 2018, Raven cooler, JD RC 2000 controller
- **(4) 1000 gal NH3 wagons**, narrow row, front fill
- **11 knife Blue Jet NH3**, hyd fold, notched blades, Yetter double disc sealers, Raven cooler, Raven 440 monitor
- **Miller Pro sprayer**, 1000 gal tank, 13.6-38 tires, 65' boom, hyd raise & fold, foamer, inductor, hyd pump, controller
- **7 knife DMI NH3 bar**, coulters, hyd shut off, Raven controller & cooler
- **Land Pride FSP 700 fert spreader**, 3pt
- **15 Knife C-IH NPX 28% applicator**, 1000 gal poly, coulters, ground drive pump
- **17 Knife AG Systems 7200 NH3 bar**, pull type, coulters, closing discs, Raven controller
- **300 gal sprayer**, 20' boom, pto pump
- **New Demco PDS 300A saddle tanks**, 300 gal each, brackets
- **9 Knife Dalton 28% applicator**, 500 gal, coulters, pull type, hyd fold, ground drive pump

TILLAGE

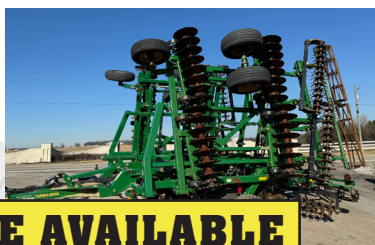
- **2015 27' C-IH 335 VT vertical tillage tool**, hyd, fold, w/reel (nice)
- **2021 Great Plains 3000 TM vertical tillage tool**, 30', hyd angle, hyd fore & aft, hyd basket, rear hitch & hyd
- **26.5' JD 630 disc**, hyd fold, 7.5" spacing, rear hitch & hyd, hyd fore & aft
- **25' C-IH 496 disc**, hyd fold, 20" blades, 7.5" spacing, rear hitch & hyd
- **26' Kent Series 5 soil finisher**, hyd fold, knock on shovels, 3 bar harrows, rear hitch & hyd
- **42' Krause soil finisher**, hyd fold, 3 bar coil tine harrow
- **50' C-IH Tigermate II field cultivator**, hyd fold
- **36' Wilrich field cultivator**, hyd fold, walking tandems

- **25' Landoll field cultivator**, hyd fold, 5 tines, 5 bar harrow, rear hitch & hyd
- **23' White 226 field cultivator**, C-shank, protectors, 1 bar harrow, rear hitch & hyd
- **18' JD 1010 field cultivator**, hyd fold, rear hitch
- **24' White 271 disc**, hyd fold, rock flex, 21" blades, 9" spacing
- **11 shank Sunflower 4511 disc ripper**, walking tandems, hyd raise on disc blades
- **2006 Sunflower 4411 disc ripper**, 7 shank, 30", spring loaded, hyd disc
- **32' Brillion Optimizer packer**, X-fold, narrow transport, 5" axle
- **18.6' C-IH 496 disc**, hyd fold, rear hitch, New 22" blades
- **13 shank Salford 9813 disc ripper**, rolling basket
- **33' J&M TF212 double rolling basket**, hyd fold, gauge wheels
- **18' IH 610 disc**, hyd fold
- **15' Brillion cultimulcher**
- **7 shank Brillion chisel plow**, spring loaded, 3pt
- **33' Unverferth Rolling Harrow**, double basket, hyd fold, 5 new baskets & hoses
- **28' Brillion X-fold packer**, hyd fold
- **24x20" row crop cultivator**, hyd fold, C-shank, fenders, gauge wheels, IH bar, JD shanks
- **7 shank Landoll disc chisel**, spring loaded, Buster bar harrow
- **22' Brillion cultimulcher**, hyd fold, crow foot
- **32' Brillion cultipacker**
- **15 shank Wil-rich tool bar**, hyd fold
- **26' J&M TF212 double rolling basket**, hyd fold
- **32' Unverferth rolling harrow**, single basket, hyd fold
- **24' Case disc**, hyd fold
- **14' IH 370 disc**, new front blades & bearings
- **7' Taylorway disc**, 3pt, 20" blades
- **7 shank chisel plow**, gauge wheels, 3pt
- **10.5' IH 370 disc**
- **30' M&W rotary hoe**, hyd fold, gauge wheels
- **8' Frontier DH 1396 disc**, 3pt, 22" blades
- **10 shank IH 55 chisel plow**, spring loaded
- **16' AC field cultivator**, hyd fold, gauge wheels, Remlinger 3 bar harrow
- **6x18" IH 720 plow**, toggle trip, semi-mtd
- **5x18" IH 720 plow**, auto reset, semi-mtd
- **4x16" IH 720 plow**, semi-mtd
- **12' Brillion cultimulcher**
- **5' JD disc**, 3pt
- **15' JD 400 rotary hoe**
- **15' IH vibra shank field cultivator**, harrow
- **5 shank Landoll chisel plow**, spring loaded
- **7' cultipacker**
- **6' disc**, 3pt
- **4x38 Noble cultivator**, rolling shields

- **4 row IH cultivator**, rolling shields
- **Ford 2 btm plow**
- **JD 1 btm plow**, 3pt

PLANTERS • DRILLS • SEED TENDERS

- **2013 JD 1770 planter**, 12x30, Max Emerge XP units, liquid single disc fert, row cleaners, Seed Star XP, no display
- **24x30 C-IH 1250 planter**, liquid fert w/pop up, row cleaners, row shut offs, center fill, pneumatic down force, pto pump w/cooler, markers, Red Ball monitor, insecticide, hook up for Pro 700
- **16/31 Kinze 3600 planter**, no-till, markers, Martin closing wheels, KP11 Monitor, brush meters
- **8/16 Kinze 3500 planter**, pivot fold, no-till, hopper ext, monitor
- **1997 JD 1770 planter**, 16x30, Max Emerge, Conservation, liquid single disc, variable driver, E-drive, monitor
- **12/23 Kinze 2600 planter**, no-till, 200 acres on new seed openers & no-till coulters, KM 3000 monitor
- **16x30 Kinze 2600 planter**, liquid fert, rate controller, Red Ball system, (4) 200 gal tanks, pivot fold (NO monitor)
- **30' Hiniker 4836 air seeder**, Yetter markers, 24x15" spacing, includes 12 spare row units, monitor
- **12x30 JD 7200 planter FF**, no-till, single disc liquid, Yetter row cleaners, flex frame, insect, Precision 20/20 vacuum row units, V set meters, Precision air down force & lift, monitor
- **12x30 JD 7200 planter**, Yetter no-till, liquid, Keaton seed firmers, rubber closing wheels, 4 spring down pressure, NEW no-till coulters, fold down markers, corn & bean plates, JD 200 monitor
- **6x30 JD 7200 planter**, no-till, liquid, single disc fert, finger pickup, monitor
- **8x30 Kinze 3500 planter**, pivot fold, liquid no-till fert, no-till, spike closing wheels, markers, individual row clutches, monitor
- **16x30 JD 7200 planter**, no-till, monitor & fold box
- **8x30 JD 7200 planter**, liquid fert, finger pick-up, monitor
- **6/11 JD 7000 planter**, finger pick-up, no till w/monitor
- **15' JD 1560 no-till drill**, dolly wheel
- **15' C-IH 5400 no-till drill**, 7.5" spacing harrow w/C-IH coulters cart
- **C-IH 5400 Soybean Special**, 12x15" Early Riser units, 3pt
- **21x7 IH 5100 grain drill**, grass seed, press wheels (excellent)
- **8' Kasco Eco no-till drill**, 2 box, warm season grasses & regular seed, 3pt
- **Friesen Seed Titan 4SETM seed tender**, 4 box, Honda motor, belt conveyor
- **KB 350 gravity wagon**, gear, seed auger, roll tarp, Powermate, Honda eng
- **DMI 400 wagon**, 16.5L-16.1 tires, Seed Vac conveyor, Honda GX340 motor, elec start
- **4x38 MM planter**, dry fert, insecticide (works)



VAN SHUTTLE AVAILABLE



CONSTRUCTION • TILE EQUIPMENT

- 2023 Bobcat E42 mini excavator, cab, air, heat, 18"x24" buckets, 406 hrs
- 2002 CAT 416D backhoe, 4x4, cab, heat, Extend-a-hoe, material bucket, 3' ditch bucket, 1758 hrs
- 2003 Case 580 SM backhoe, 4x4, PS, Extend-a-hoe, 4 in 1 front bucket, forks, 18" buckets, 932 hrs
- 2002 JD 310 SG backhoe, 4x4, Extend-a-hoe, cab, heat, rear quick att, 24" bucket, 3202 hrs
- CAT 416B backhoe, 4x4, Extend-a-hoe, 22" bucket, material bucket, 8765 hrs
- 1999 Case IH 9370 4x4 tractor, PS, 620/7R42 hub duals, front & rear weights, 4 remotes, 4810 hrs sells w/ Johnson Drain to Gain pull type 5.5' tile plow, 6" & 4" boot, power feeder, Intellescope GPS to Outback base station
- Vermeer pull type trencher, 6' digging depth, side discharge, pto
- Vermeer RT 450 trencher, 4x4, diesel, 4' trench, backhoe attach, front blade, 1500 hrs
- NEW tile cart, 10'x6" table, 12v hyd pump, corded remote & wireless, 11L-15 tires, rear hitch
- NEW tile cart, 10'x6" table, hyd, 11L-15 tires, rear hitch
- Kobelco SK200 LC excavator, Cummins, man thumb, 8710 hrs
- Yanmar V027 mini excavator, manual thumb, 2' & 1' buckets, front blade, 3315 hrs
- Ford 555B backhoe, diesel, 18" rear bucket, material bucket, good rubber, 4750 hrs, (no brakes)
- Grove off road scissor lift, 42' reach, 2 wheel drive, gas
- Up Right MX19 Scissor lift, 19' lift, new batteries
- 1985 Terex TB85 straight boom manlift
- Pull type dirt pan, 5 yard
- Terex AL 4000 Light All, Kubota power, 13.6 hp, new battery, 7907 hrs
- Terex RL Light All, Kubota power, 13.6 hp, new battery, 5580 hrs
- Clarkor aircraft tug, gas 230ci, new battery
- Pull-A-Long pipe layer (ditch box) 8'x24", lay up to 8"
- JD 36", 18", 12" buckets
- Case 18" bucket
- 24" bucket
- Trench bucket
- 36" backhoe bucket
- 24" backhoe bucket
- 1996 I/R 185 air compressor, JD engine (runs, needs head gasket)

TRUCKS • TRAILERS

- 2013 Volvo VNM day cab semi tractor, Volvo D13, 12 speed automatic
- 2012 Peterbilt 587 semi tractor, Cummins ISX, 13sp, tandem, air ride, 562,000 mi.
- 2012 Freightliner 113 Cascadia day cab semi, DD13 power, 10sp, dual line wet kit, air ride, 623,000 mi. (motor rebuilt out of frame 85 mi.)
- 2012 IH Trans Star semi tractor, day cab, Max Force 12.4 410hp, 10sp, air ride, 329,448 mi.
- 2011 IH Pro Star Premium semi tractor, Max Force 13 430hp, 10sp, day cab, air ride, 284,801 mi.
- 1995 IH 8200 semi tractor, day cab, MII Cummins, 9sp, tandem, air ride, (unknown mi.)
- 2006 IH 8600 semi tractor, day cab, Cummins ISM, 10sp, tandem, air ride, 487,000 actual mi.
- 2010 Freightliner Columbia Glider semi tractor, day cab, Detroit 60, 10sp, chrome mirrors, quarter fenders, polished rims, recently spent \$6,700 @ Stoops
- 2010 Pro Star Max Force semi tractor, 13L470 deleted & tuned, Eaton 10sp, full air ride, full power package, 10 new tires, southern truck, no rust, 262,000 mi.
- 2013 Peterbilt 384 Paccar MX13 semi tractor, sleeper, 10sp, 11R22.5 tires on polished alum
- 1995 Volvo WIA semi tractor, 3406 CAT, 10sp, tandem, air ride
- 1992 Ford L 9000 semi tractor, day cab, CAT power, 13sp, wet kit
- 2010 Stoughton 40' alum hopper trailer, 96"x66", air ride, ag hoppers, SS corners, LED lights, power tarp, no salt
- 2007 Wilson alum hopper trailer, air ride, 72" sides, commodity doors, roll tarp

- 2004 Maurer 36' grain trailer (new roll tarp)
- 2001 Hawk Master 38' hopper trailer, 2 door, newer roll tarp
- 1999 IH Paystar dump truck, N14, 8LL trans, 16' bed & hoist, good rubber, 400,000 mi.
- 1999 Volvo WG64 tri-axle dump truck, 16' bed, D12 Volvo 350hp, 8LL Eaton, live hyd, newer dump cylinder, 87,970 mi.
- 1986 Ford F-800 dump truck, single axle, 429 gas, 5&2 sp, 11R22.5 tires, simulators, 10' Galion bed & hoist, 86,840 mi., recent clutch & trans
- 1996 Ford F-650 flat bed truck, 5.9 Cummins, 5sp, New 24' bed, 235,000 mi.
- 2015 Hino 268 w/24' box truck, 7.9 diesel, auto, air ride, power lift gate, 427,000 mi.
- 1993 E-ONE fire truck, Cummins, auto, Hale 1260 gal pump, 1250 gal cap, Gen Set generator, 22,974 mi.
- 1987 GMC 7000 grain truck, diesel, live tandem, 6sp, 20' Omaha Standard bed & hoist, cargo doors, roll tarp, 204,813 mi.
- 2000 IH F2654 chassis, diesel, auto, tandem, shows 10,981 mi.
- 2003 Chevrolet C4500 truck, diesel, auto, 12' flat bed, gooseneck hitch, Reese hitch, controller, 239,515 mi.
- 2005 GMC C7500 bucket truck, 8.1 gas, 6sp, Altec LRV55 boom, 60' working height, over center boom, outriggers, storage boxes, Kubota pony motor, 50,790 mi., 2611 boom hrs
- 2002 IH 4300 chassis, DT 466, 6sp, 26,000 GVW, 407,238 mi.
- 2002 4 STAR 24' gooseneck alum horse trailer, 18' of floor, dressing room, ties for horses, full ramp, rubber mats, alum rims (excellent)
- 1991 4 STAR 24' alum livestock trailer, tandem, center gate, gooseneck hitch
- 1997 Corn Pro gooseneck trailer, 3 horse slant, w/4' short wall
- 1996 Red Tag trailer, 10 ton, 19' deck, 5' beavertail w/ramps
- 2001 Trinity belt trailer, 42" belt, 72" sides, grain chute, 11R-22.5 tires, (needs some work)
- 2002 Chevrolet 2500 HD pickup, 4x4, 6.6 Duramax LB7, auto, reg cab, 8' box, New paint, New 285/70/17 Cooper Discover AT3 tires, 116,800 mi., fresh motor
- 2008 Ford F-250 XLT pickup, 4x4, crew cab, 6.4 diesel, auto, power windows & locks, 5th wheel hitch, 7.6' Boss snow plow w/remote, 204,000 mi.
- 2018 Chevrolet Silverado HD 3500 crew cab, auto, diesel, 9' Knapheide, work box, ladder rack, 117,785 mi.
- 2003 GMC Sierra 4x4 pickup, Ext cab, power windows & locks, 199,000 mi.
- 2002 Ford F-250 pickup, ext cab, 4x4, gas, 184,959 mi. (heads rebuilt w/steel inserts)
- 1999 Chevrolet 2500 pickup, 4x4, Ext cab, long bed, liner, 199,504 mi.
- 1999 Ford F-250 pickup, 4x4, gas, reg cab
- 2017 Suzuki mini dump truck, 4x4, 5sp, AC, heat, elec dump, 60+ mph, auto tail gate, 600 mi. (1 owner)
- 2009 Chevrolet Express G3500 bus, Duramax diesel, 14 passenger, 116,000 mi.
- 1988 Ford F-350 truck, 460 gas, 4sp overdrive, 12' bed & hoist, 105,000 mi. (non-running)
- Sure Trac 22' trailer, 18' tilt, 4' deck, tandem, 12,000lb
- Army truck 6x6, diesel, flat bed w/ramps
- 1978 Low Boy tandem axle, detach trailer
- Custom Built 36,000 lb trailer, 25' deck, 6' beavertail
- 2007 Spec-Tech 53' open top Gondola trailer, tri-axle, spring ride
- 2006 Transcraft 53' flatbed trailer, alum, air ride, combo
- 1999 Wilson Road Brute 51' alum flat trailer, air ride, w/conestaga
- 1999 Nomanco 7'x20' tandem axle trailer
- (4) 2013 Felling FT161 tandem axle trailers, 82"x16', folding ramps, 215/75R17.5 tires, ball hitch
- 1984 Freuhauf 8500 gal alum tanker, 3" plumbing, motor & pump
- 1998 RediHaul skidloader trailer, 14', 14,000 GVW, ball hitch, elec brakes
- Tandem axle trailer, ramps, NO TITLE
- Skid loader trailer, single axle, ramps, NO TITLE

2024 SCHRADER'S AREA FARMER & CONTRACTORS EQUIPMENT AUCTION

AUCTION

**SATURDAY,
FEBRUARY 24
@ 10:00AM**

**AUCTION LOCATION: 877 E 900 S - CORNER OF STATE ROAD 9 & 900 S
COLUMBIA CITY, IN**



TIRES • DUALS • WEIGHTS

- Set of 380/90-46 Firestone radial tires & rims for 55 & R series
- (8) 800/38 Radial Tires
- Set of 18.4-42 step up rims for 40,30,20 series
- Set of 18.4R42 bolt on duals
- (4) 20.8-42 Firestone tires
- Set of 18.4-38 tires w/JD rims, (JD 63000) rack & pinion
- Set of 18.4R38 hub duals, IH 1566
- Set of 15-34 T-rail duals
- Set of 14.9-34 bolt on duals
- (4) 320/90R54 tires & rims C-IH
- (2) 320/85R38 tires & rims C-IH
- 16" track for JD 8400T, Firestone
- (4) New 24-10.50-10 NHS tires
- (4) 12-16.5 skidloader tires, heavy duty
- 12.5/80-18 new tires & rims
- (4) 31-13.50-15 drill tires
- Set of 16.9-24 turf tires
- Set of 13.6-24 tires w/JD rims
- (12) JD suitcase weights
- Set of JD rear inner weights 450lb
- (2) sets of JD rear weights, fit 20 & 30 Series tractors
- (2) sets of IH rear weights
- Set of rear weights for JD M373T
- Set of IH rear weights
- Set of rear weights

UTV's • ATV's • LAWN MOWERS

- 2020 JD 835R gator, cab, air, heat, 4x4, LED lights, hyd dump, PS, front & rear brush guards, new tires, 778 hrs
- 2017 Kubota ATV 1100, 4x4, cab, air, heat, hyd bed, 1040 hrs
- 2011 Kubota ATV 1100, 4x4, cab, air, heat, hyd bed, 1480 hrs
- 2011 Kubota ATV 1100, 4x4, cab, air, heat, hyd bed, snow plow, 717 hrs
- 2019 JD XUV 835R gator, 4x4, cab, heat, ac, elec dump, radio, front & rear hitch, 9000 mi.

- 2011 Polaris Ranger 800XP, high output, tip out windshield, 7321 mi.
- Yamaha Sun Classic golf cart, elec, lights, turn signals, charger
- JD 6x4 gator, bed liner, hyd dump, 1300 hrs, (1 owner)
- JD 620i gator, 4x4, winch, 552 hrs
- 2017 JD 1025R lawn mower, 4x4, diesel, hydro, PS, 60" mower deck w/auto quick tach, JD 120R loader, quick tach, 53" material bucket, grill guard, 3pt, (only 150 hrs)
- Kubota B7500 lawn mower, hydro, 4x4, 60" deck, 1150 hrs
- JD 420 lawn mower, 20hp, 50" deck, 3pt, front hyd, 1046 hrs
- JD F-680 front mount mower, gas, 60" commercial deck, 1120 hrs
- Cub Cadet LTX 1050 riding mower, 50" deck, 300 hrs
- 2017 Kubota ZD1211L 0-turn mower, diesel, 25hp, 72" deck, 1632 hrs
- 2022 Toro Titan 0-turn mower, 24.5 hp, 60" deck, My Ride, 105 hrs
- American Landmaster Yardsport YS 200, 2wd, dump box, front winch, windshield (runs drives well)
- 2020 Toro Dingo TX525W, wide track, 1192 hrs
- 2018 Ariens Ikon mower, Kawasaki 23hp, 52" deck, 328 hrs
- 2017 Dixie Chopper 2550 lawn mower, 100 hrs
- Grasshopper 727K 0-turn mower, 61" flip up deck, 958 hrs
- Grasshopper 727K 0-turn mower, 52" flip up deck, rear discharge, 895 hrs
- Grasshopper 721 diesel mower, 0-turn, 61" flip up deck, 1651 hrs
- Cub Cadet lawn mower, gas, XTI mower deck (trans needs fluid)
- JD 430 lawn mower, diesel, 60" deck, front hyd, 1450 hrs
- 2018 Gravely 0-turn mower, Kawasaki FR691V 23hp, 52" deck, 160 hrs
- 2011 Simplicity lawn mower, 492 hrs
- 2010 Cub Cadet lawn mower, 627 hrs
- Bush Hog M 2673 0-turn lawn mower, 26hp, 73" deck, 1233 hrs
- 2004 Dixon ZTR 4515B 0-turn, lawn mower, hydro, 15.5hp, 42" deck
- 16' Land Pride 40200 finisher mower, hyd fold
- 2023 Vermeer Chipper BC700XL, 57 hrs
- 2021 Husqvarna walk behind seeder
- 2012 Lawn Solutions walk behind aerator, gas
- Pro Lawn 3 sec hooded sprayer
- 2006 Honda VTX 1300 motorcycle, cruise saddle bags, 13,418 mi.



SAWMILL • LUMBER

- Large quantities of mixed hardwood lumber, board fence, misc. blocking





ROTARY MOWER • MISC FARM EQUIPMENT

- 10' Bush Hog HD grader blade, hyd angle & tilt, 3pt
- 8' Land Pride 45 HD grader blade, hyd angle & tilt
- 7' JD HX7 rotary mower, 3pt, chains
- Frontier RT 2383 tiller, (like new)
- 5' JD 660 tiller, gauge wheels, 3pt
- 5' Frontier CA 2060 aerator, 3pt
- Bush Hog BH5 rotary mower, 3pt, stump jumper
- 6' Unique landscape rake & grading tool, 3pt
- Woods BB60 rotary mower, 3pt
- 7' Taylor Way finish mower, gauge wheels, 3pt
- 84" Bush Hog RDTH rotary mower, 3pt, rear discharge
- Onan Gen Set generator, 6 cyl, natural gas w/disconnect (needs work)
- NEW Western 8.6' snow plow, Ultra Finish, Ford brackets, Joy stick, controller
- JD 148 loader, 72" material bucket, brackets for 4020, independent valve
- BMC Pendular spreader, seed & fert, 3pt, hyd shut off, (like new)
- Tandem axle fuel trailer, 80 gal cap, NO TITLE
- 7' Woods Pulveriser, 3pt
- 7' Woods GSM84P driveway plane grader, 3pt
- 6' rotary mower, 3pt
- 12' Henke snow plow bracket for Sterling
- 54" Kwick Way hyd blade, 2 way angle
- 3000 gal SS milk tank w/dump valves
- Rock picker, tandem axle, hyd reel & dump
- US Dept of Defense diesel generator, Model MEP-003A, 10kw 60hz, 120V/208V 3ph, 120V/240V 1ph, on trailer w/ roof, pintel hitch, new tires
- JD 2630 screen, SF1 & 2, auto trac
- JD 2630 screen, auto trac, section control, row sense
- Ag Leader GPS light bar guidance system
- 21' KSI 0806 seed conveyor for C-IH 1240 planter w/ brackets
- Ingersol Edge core grinder for disc brakes
- 5' grader blade, 3pt
- 6' Land Pride grader blade, 3pt
- Trimble guidance, globe, harness, & light bar
- Paul 2000# livestock scale
- Paul 1500# livestock scale

- 300 gal fuel tank, Fill Rite pump, new
- Portable fuel trailer, 300 gal w/pump
- 300 gal front mount tank
- 300 gal fuel tank, hand pump
- 6' grader blade, 3pt
- 300 gal alum fuel tank, 110V pump
- 1995 Chrysler 318 V8 engine, 1700 hrs
- 46" Whitman power trowel, quick pitch, Honda power (like new)
- Rotomec post hole digger, 30" auger, 3pt, like new
- Whiteman motor mixer, Honda 8hp
- 7' Farmhand RC 270 rotary mower, pull type, chains
- Cub Cadet 926 SWE snowblower, 26", elec start, elec chute, light
- 7' NI sickle bar mower, pull type, hyd raise
- 14' poly seed auger, plastic screw, telescopic spout
- 8' grader blade, 3pt
- Axis boom arm, hyd angle, pto
- Craftsman vertical air compressor
- Set of 500 lb wheel weights
- Set of IH hubs, 3.5" axle
- 150 gal front mount fert tank, JD brackets
- Snow plow for pickup
- (6) JD new style weights
- (6) JD old style weights
- 1 shank JD subsoiler
- Century wire feed welder
- (12) Yetter fert coulters
- (11) Martin row cleaners
- Post hole digger, 3pt
- 96" Shurlock bulk heads for tarp & bows
- Hay spear, skid loader attach
- (16) Yetter row cleaners, clean sweep & compressor
- (24) Kince hopper ext's
- New IH ROPS, 06-66 Series
- Misc Great Plains parts
- (12) JD 7200 finger pickup meters
- JD spring downforce w/brackets
- (16) JD boxes & meters, disc for 1770 NT planter
- (16) JD air bags & brackets
- Misc crate combine screens, planter parts, tractor parts
- Dole moisture tester

- Quick hitch, CAT III
- B&D Pro Box opener
- Great Plains/John Blue fert pump ground drive
- (2) SS hog feeders
- Shuttle tank w/meter
- 6' King Kutter rotary mower, 3pt
- Easy Vac leaf vac w/motor & attachments
- County Line pull type sprayer, elec motor
- Fimco pull type sprayer, elec motor
- 6' & 4' Buyers 24" alum underbody boxes
- Mug Bug fogger w/gas motor (like new)
- Several IH weights & brackets
- SS side tool boxes
- IH cab for IHF 2654
- Case running gear
- (2) rolls of Red Brand fence
- (2) rolls of barb wire
- (4) hog feeders
- (2) Rolls of picket fence
- Air Stream bin spreader for 36' bin
- 10" root auger, bad motor
- (2) fifth wheels for semi
- Hyd cooler kit for C-IH 1240 planter
- Sickle for JD 925 flex head
- (2) Fast hitch draw bars
- 6 hyd cylinders, JD, hoses & ends
- Muffler for IH 1566
- (2) HD steel wagon wheels
- (2) pto shafts
- Pallet misc chisel points, NH3 points, pto pump, hyd pump, ripper points
- Reese hitch
- SCH knife parts & clamps for augers
- 10" cage & hitch for auger
- 1" rubber hose
- (2) hyd cylinders
- (2) grass seeders
- Silo winch
- (2) buzz saw blades
- 300 gal fuel tank w/standard
- Winpower 45/25 pto generator, 120/240 volts, on trailer



SCHRADER

Real Estate and Auction Company, Inc.

950 North Liberty Drive
Columbia City, IN 46725

Auction Manager: Ritter Cox
800.451.2709 • 260.609.3306 (cell)
#AC63001504, #AU08600254



2024 SCHRADER'S AREA FARMER & CONTRACTORS EQUIPMENT AUCTION
877 E 900 S - CORNER OF STATE ROAD 9 & 900 S - WHITLEY COUNTY, IN

FEBRUARY 2024						
Sun	Mon	Tue	Wed	Thu	Fri	Sat
				1	2	3
4	5	6	7	8	9	10
11	12	13	14	15	16	17
18	19	20	21	22	23	24
25	26	27	28	29		

AUCTION

**SATURDAY,
FEBRUARY 24
@ 10:00AM**

TERMS: Cash or Check w/proper ID. 3% convenience fee for credit cards. Announcements made the day of the auction take precedence over any printed material, and oral statements made.

Free Doughnuts & Coffee Before the Sale. Lunch served.

Loading and unloading available at your own risk.
Not responsible for accidents.



800.451.2709
www.SchraderAuction.com

2024 SCHRADER'S AREA FARMER & CONTRACTORS EQUIPMENT AUCTION

AUCTION

**SATURDAY,
FEBRUARY 24
@ 10:00AM**

877 E 900 S - CORNER OF STATE ROAD 9 & 900 S
WHITLEY COUNTY, IN

**2 FARMER
RETIREMENTS!**



SCHRADER
Real Estate and Auction Company, Inc.



LIVE INTERNET BIDDING
Visit SchraderAuction.com for Details
or call 800-451-2709.

800.451.2709
www.SchraderAuction.com