

Williams County - West Unity, OH
FARM EQUIPMENT & REAL ESTATE AUCTION

Corporate Headquarters:
 950 N Liberty Dr, Columbia City, IN 46725

3.91±
 acres

Offered in 1 Tract



AUCTION MANAGER:

Jerry Ehle • 260.410.1996

(Salesperson) #SAL.2006001035, (Auctioneer) #2013000026
 Schrader Real Estate & Auction Company, Inc.
 (Jeffersonville, OH) #REC.0000314452, (Irwin, OH)
 #BBB.2010001376, (Auctioneer) #63198513759

Get Our
 iOS App:



Follow Us On:



800.451.2709

www.SchraderAuction.com

Farm Equipment Auction to Begin
TUESDAY, DECEMBER 19 @ 10AM
 with Real Estate Auction to Follow at Approximately 12:30pm

Williams County - West Unity, OH
FARM EQUIPMENT & REAL ESTATE AUCTION



- Tractors • Receiver • Combine • Heads
- Carts • Trucks & Trailers • JD Corn & Bean Planters
- Backhoe • Excavator • Dozer • AG Chem Sprayer • NH3 Applicator & Support
- Tillage Equipment • Grain Cart & Wagons • Farm Equipment & Misc. Items

Williams County - West Unity, OH
FARM EQUIPMENT & REAL ESTATE AUCTION



- Tractors • Receiver • Combine • Heads • Carts • Trucks
- Trailers • JD Corn & Bean Planters • Backhoe • Excavator
- Dozer • AG Chem Sprayer • NH3 Applicator & Support
- Tillage Equip. • Grain Cart & Wagons • Farm Equip. & Misc.

• Buildings • Possible Building Site



3.91±
 acres Offered in 1 Tract



3.91±
 acres

Offered in 1 Tract

• Buildings • Possible Building Site

Farm Equipment Auction to Begin
TUESDAY, DECEMBER 19 @ 10AM
 with Real Estate Auction to Follow at Approximately 12:30pm

Farm Equipment Auction to Begin
TUESDAY, DECEMBER 19 @ 10AM
 with Real Estate Auction to Follow at Approximately 12:30pm



800.451.2709
 www.SchraderAuction.com



800.451.2709
 www.SchraderAuction.com



Williams County - West Unity, OH FARM EQUIPMENT & REAL ESTATE AUCTION

TRACTORS • JD 6000 RECEIVER

- **JD 9300 Quad trans**, 3pt, QH, PTO, 4 remotes, new engine has 800 hours, 18.4-46 duals,, buddy seat, 6307 hrs. #RW9300HOD1083
- **JD 8R230 PS**, 4 remotes, power beyond, 540/1000 pto, fenders, front weights, buddy seat, 480/80R46 duals & 420//90R30 front tires, 2015 hrs, #1RW8230DHLA172978
- **JD 8270R**, ILS, PS, front weights, 4 remotes, 1000 pto, QH, leveler, fenders, rear & front, 480/80R50 duals & 480/70R34 front tires, 4879 hrs.
- **JD 8330 PS**, 3 remotes, QH, 520/85R-46, 480/70R 34 tires duals, Green Star ready, 7,011 hours, #RW8330PO18993
- **1967 JD 4020 M&W turbo**, WF, 2 remotes, QH, new 18.4-34" tires, #T213R163721R
- **JD 3020 diesel**, NF, frt weights, 14.9-38, 2 remotes, #81NT113RO706783R diff. lock 65
- **JD 3020 diesel**, NF, frt weights, 14.9-38 65 rebuilt engine, SNT113RO83033R 65
- **Oliver 1750 gas** 16.9-34 6354 hrs., dual hubs, 2 remotes, 3 pt., pto
- **JD 620 NF** 13.6-38 tires, power steering, 3 pt.
- **Farmall M**, not running, ps
- **Farmall M mower deck**, 13.6-38 tires, #295534X1
- **JD Starfire 6000 globe**

COMBINE • HEADS • CARTS

- **JD S670 combine**, chopper, folding hopper, Lateral tilt, 4x4, 650//85R38 straddle duals, 28L-26 rear tires, 2,597 Eng/1,581 Sep hours, 1HOS670SA-DO755692
- **JD 635FD Draper head**, flip over reel, #1HO635FDCJ900338
- **Horst Contour CHCF36** 4 wheel steer 36' header cart

6 row corn reel

- **JD 608C dual pto hydra deck plats**, stalk stomper, #HO608CX732139

EZ Trail 680 head cart

TRUCKS & TRAILERS

- **2022 Dodge 2500 4x4**, single cab, 6.4 Hemi, steering wheel controls, power windows, w/ Boss V plow, tool box & fuel tank only 14,340 miles,
- **2008 Peterbilt semi day cab**, Low Leaf air ride, Cummins ISX deleted, 9 spd, Jake brake, pwr windows, air cond, 1/2 fenders, 2 line wet kit, 674,994 miles
- **2005 IH 9200**, Cummins 435 hp, 10 spd, air ride, wet kit, 295/75R22.5 tires
- **2007 Wilson Commander hopper trailer**, roll tarp, ag hoppers, air ride, 24.5 tires
- **2008 Wilson 41' 54" sides**, spring ride, roll tarp, ag hoppers.
- **BlackHawk Etnyre RGN 255/70R 22.5**, 34 ton, hydra neck
- **2000 Steiger trailer 25' w/ tail & ramps**, 22320 GVW, elec brakes
- **IH 9400 dump truck**, Cummins N14, 9 spd, wet kit, 1 mil miles, dump bed, 11R.22.5
- **1997 IH 4700 DT466E**, 7 spd., air, 311,900 miles, hydra brakes, 11R22.5 tires, 20' bed w/ 1600 gal. elliptical tank, chemical inductor, Banjo pump on flatbed

JD CORN & BEAN PLANTERS

- **JD 1770 NT 12 row Martin row cleaner** & no tills, single disc openers, Red Ball system, air down pressure, 450 gal. fertilizer tank, flat fold markers, #1A01770WVDM750278
- **JD 1790 CCS 12/24 center fill conveyor**, no till coulters, ground drive pump, 800 acres on new blades, no monitor has plug to cab, #1A01790ECBM740218



INSPECTIONS:
Mon, Dec. 11 • 11am-2pm
& Sat, Dec. 16 • 9am-12pm

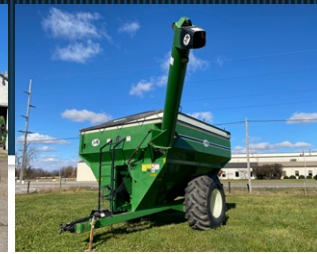


BACKHOE • EXCAVATOR • DOZER

- **Link Belt 210LX track excavator**, 48" bucket, mech thumb, 32" tracks, Isuzu Diesel engine, only 5,711 hrs, #K3515781
- **Cat D4CXL Series 3 Dozer**, 8' 6 way blade, pwr shift, pedal steer, heater, 4,371 hrs, #6YL01565
- **JD 310SE loader backhoe**, 4x4, pilot controls, full cab air cond., extendaboom, front aux & aux on hoe, quick tach backhoe bucket, 3437 hrs., #T0310T5167574
- **Plate compacter** for backhoe
- **20' trench box**
- **Misc. culverts 18-24"**
- **Pallet forks**

AG CHEM SPRAYER • NHS APPLICATOR & SUPPORT

- **Ag Chem 1064 RoGator 1100 gal. s.s. tank**, 90' booms, foamer, rinse, tank, Raven 661 controller, Raven Starlink GPS, unknown condition not used, 2 new drive motors, 380/90R46, new pump & fittings,



never used since added, extendable axles are not working, 3121 hours,

- **2012 Countryside Farms NH3 11 shank 3 pt. bar**, Ravens Accuflow, Ravens 440 monitor, disc openers, closing discs

- **Transcraft 1986 fertilizer tender trailer**, 2000 gal. mix tank & pump, 2000 gal. elliptical tank, 24.5 tires, aluminum rims

- **1000 gal. s.s. nurse tank w/ pump**
- **(4) 2500 poly tanks**, stored inside

TILLAGE EQUIPMENT

- **Krause Excelerator 8000-20 20' walking tandems**, Star wheels, new rolling basket
- **Krause 1928 rock flex 24' disc**
- **JD 714 disc chisel 11 shank hydra line disc**, buster bar
- **Krause 2428 disc**, 21', 25" big blades, rear hitch
- **Krause 6200 soil finisher 31' walking tandems**, 5 bar drag, hydra disc depth

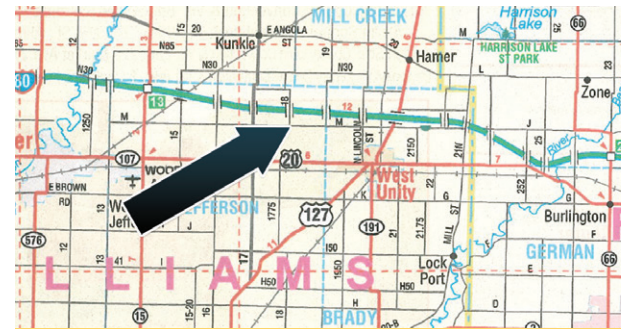
- **Sunflower 4212 11 shank disc ripper w/ buster bar**
- **UM 1645 D 33' double basket**, one is solid, & crumbler

GRAIN CART & WAGONS

- **J & M 750 grain cart roll tarp** 30.5L32 lights, corner auger
- **J & M 385 wagon w/ tarp** 22.5 tires
- **M & W little red wagon**, 2 compartment, 20" tires w/ lights
- **Killbros 350 gravity wagon** on Cory 8T gear

FARM EQUIPMENT & MISC. ITEMS

- **JD MX7 3 pt. rotary mower**
- **1000 gal. fuel tank on skids w/110V pump & filter**
- **Gas pump & hoses**
- **Aluminum side toolboxes**
- **L shape fuel tank**
- **4 cylinder air compressor, gas**
- **JD wheel spacer**
- **New wagon tire & rim**
- **Trash pump**
- **P & H NH3 units**



LOCATION: 4.5 mi. east of Holiday City (20A/15) on CR-M or 1 mi. north of West Unity, OH on Lincoln St to CR-M then west 2 mi. (Approx. Address: 18042 CR M, West Unity, OH 43570)



3.91± ACRES W/ BUILDINGS: 40'x90' pole barn w/ concrete floors & 14' eaves, 32'x60' Quonset building, 60'x75' barn w/ 30'x30' addition all concrete floors & 22' high rafters on main portion of the barn. 21'x60' storage building. Jefferson Twp., Williams Co., OH



Farm Equipment Auction to Begin

TUESDAY, DECEMBER 19 @ 10AM

with Real Estate Auction to Follow at Approximately 12:30pm

SCHRADER
Real Estate and Auction Company, Inc.

800.451.2709
SchraderAuction.com

Seller: D&L Trucking LLC, Doug Siegel Estate
Equipment Questions Call: 260.336.9750
Auction Manager: Jerry Ehle • 260.410.1996

EQUIPMENT/PERSONAL PROPERTY TERMS:

Cash or Check w/proper ID. 3% surcharge fee for credit cards. Announcements made the day of the auction take precedence over any printed material. Not responsible for accidents.

REAL ESTATE TERMS & CONDITIONS:

PROCEDURE: The property will be offered in 1 individual tract as a 3.91± acre unit. There will be open bidding as determined by the Auctioneer.

DOWN PAYMENT: 10% down payment on the day of auction for individual tracts or combinations of tracts. The down payment may be made in the form of cashier's check, personal check, or corporate check. **YOUR BIDDING IS NOT CONDITIONAL UPON FINANCING**, so be sure you have arranged financing, if needed, & are capable of paying cash at closing.

ACCEPTANCE OF BID PRICES: All successful bidders will be required to enter into Purchase Agreements at the auction site immediately following the close of the auction. All final bid prices are subject to the Sellers' acceptance or rejection.

EVIDENCE OF TITLE: Seller shall provide an owner's title insurance policy in the amount of the purchase price.

DEED: Seller shall provide Warranty Deed(s).

CLOSING:

The targeted closing date will be approximately 30 days after the auction.

POSSESSION: Possession is at closing.

REAL ESTATE TAXES: Seller shall pay all 2023 real estate taxes due & payable in 2024.

Buyer shall assume any taxes thereafter. Buyer shall assume any ditch & drainage assessments due after closing.

PROPERTY INSPECTION: Each potential Bidder is responsible for conducting, at their own risk, their own independent inspections, investigations, inquiries & due diligence concerning the property. Inspection dates have been scheduled & will be staffed w/ auction personnel. Further, Seller disclaims any & all responsibility for Bidder's safety during any physical inspection of the property. No party shall be deemed an invitee of the property by virtue of the offering of the property for sale.

ACREAGE: All tract acreages, dimensions, & proposed boundaries are approximate & have been estimated based on current legal descriptions and/or aerial photos.

SURVEY: The Seller shall provide a new survey where there is no existing legal description or where new boundaries are created by the tract divisions in this auction. Any need for a new survey shall be determined solely by the Seller. Seller & successful bidder shall each pay half (50:50) of the cost of the survey. The type of survey performed shall be at the Seller's option & sufficient for providing title insurance. Combination purchases will

receive a perimeter survey only.

AGENCY: Schrader Real Estate & Auction Company, Inc. & its representatives are exclusive agents of the Seller.

DISCLAIMER & ABSENCE OF WARRANTIES: All information contained in this brochure & all related materials are subject to the terms & conditions outlined in the Purchase Agreement. The property is being sold on an "AS IS, WHERE IS" basis, & no warranty or representation, either expressed or implied, concerning the property is made by the Seller or the Auction Company. All sketches & dimensions in the brochure are approximate. Each potential bidder is responsible for conducting his or her own independent inspections, investigations, inquiries, & due diligence concerning the property. The information contained in this brochure is subject to verification by all parties relying on it. No liability for its accuracy, errors, or omissions is assumed by the Seller or the Auction Company. Con-duct of the auction & increments of bidding are at the direction & discretion of the Auctioneer. The Seller & Selling Agents reserve the right to preclude any person from bidding if there is any question as to the person's credentials, fitness, etc. All decisions of the Auctioneer are final. **ANY ANNOUNCEMENTS MADE THE DAY OF THE SALE TAKE PRECEDENCE OVER PRINTED MATERIAL OR ANY OTHER ORAL STATEMENTS MADE.**