



TRACTORS/COMBINES

- **1954 IH Farmall Super M-TA**, NF, 6.00-16 SL Fronts, 15.5-38 Rears, Drawbar, 540 PTO, Berlin Power Steering, New Battery 10-23, Rear Weights, S/N 79851S, Full Restoration 2013, Running/Driving Condition
- **1941 IH Farmall BN**, NF, Rear Weights, 5.00-15 Fronts, 9.5-24 Rears, Newer 6 Volt Battery, S/N FABN70467, Restored, Running Condition
- **1964 IH Farmall 706**, NF, 6.50-16 Fronts, 15.5-38 Rears, 3 Pt. Hitch, 540/1000 PTO, 1 Remote, Power Steering, shows 3306 Hrs. 10-23 Battery, S/N 8279S, Running/Driving Condition
- **1952 Allis-Chalmers CA**, NF, 5.00-15 Fronts, 11.2-24 Rears, 540 PTO, 2 Pt. Hitch, Drawbar Bar, Rear Weights, New 12V Battery, S/N CA29726, Restored, Running Condition
- **1971 New Idea 701 Combine**, 292 Straight 6 Chevy, Gas, 741 Fast-Tach Throat, 813 Grain Head, 18.4-26 Fronts, 11L-15 Rears, 710 Thresher, New Plugs, Distributor Cap, 2 Row 720 Corn Head, 722 Sheller, Straw Walkers & Elevators & Misc. Parts
- **1968 New Idea 702 Combine**, 710 Thresher, GMC 305 V6 Gas Motor, 3 Row 30" Corn Head, 18.4x36 Fronts, 11.00L-15 Rears, Parts/Restoration

CLASSIC CARS

- **1949 Oldsmobile 88**, 4 Door Sedan, Automatic, Olds Rocket V8, shows 87094 Miles, 11-22 Battery, VIN # 8A123164, Driven Approximately 2500 Miles in 20 Yrs. Marquardt Custom Creation Interior, Exterior Restoration Approximately 2005-2006. Ultimate Car Care, Columbia City, w/Original Parts, Indiana Title and Bill of Sale, Running/Driving Condition
- **1960 Ford Thunderbird**, 2 Door, 352 V8, restored by Larry Reynolds 1995, Extra Carburetor, White Walls, shows 5741 Miles, Hood Release Handle Needs Repair, S/N 00Y71Y105934, Original Valve Covers & Air Breather, Indiana Title and Bill of Sale, Running/Driving Condition
- **1979 Lincoln Town Car**, 4 Door, Automatic, shows 103058 Miles, Second Motor, 400 Small Block, Second Owner, Running/Driving Condition, Indiana Title and Bill of Sale

GOLF CART

- **E-Z-Go Valor Gas 2 Seat Gold Cart**, Split Windshield, Aluminum Rims, Horn, Lights, Turn Signals, Drop Bed Rear Seat, 18x10.00-10 Tires, Kawasaki Motor, New Battery 10-23, S/N 2682167 Running/Driving Condition, Bill of Sale Only



SELLERS: Randy and Sherry Krider

AUCTION MGR: Phil Wolfe 260-248-1191

800.451.2709 • SchraderAuction.com

THURSDAY, NOVEMBER 30

LOTS START CLOSING AT 10:00AM

AUCTIONEERS NOTE: Schrader Real Estate & Auction Company Is Proud to Conduct This Outstanding Auction for The Krider Family, Long Standing Local Community Members Including The Family Business Krider Meat Processing, 4-H Supporters, Mizpah Members, Antique Tractor Clubs, Ag Museum & Donating to Many Local Causes, Don't Miss This Opportunity to Come to the Open House, Visit & Bid On 4 Generations of Classic Cars, Antique Tractors/Equipment, Combines, Antiques, Toys, Collectibles, Shop, Lawn & Garden, Household & Much More!!

PAYMENT: Payments may be made online or onsite in the forms of cash, check or credit card (3.0% CC surcharge applies) : Thursday November 30th from 3pm-5pm & Friday December 1st from 9am-1pm or by calling Main Office for ACH & credit card payments during normal business hours at 260-244-7606. ALL payments to be made by Friday December 1st at 1pm!

ONSITE PAYMENTS: Thursday November 30th 3pm-5pm & Friday December 1st from 9am-1pm ALL payments to be made by Friday December 1st 1pm.

BUYERS PREMIUM: 10% Buyers Premium applies. 5% Buyers Premium capped at \$750 on 4 antique tractors and 3 classic cars.

****Payments not made by 1pm on Friday December 1st will be automatically run via the credit card on file.****

NOTE: Please check e-mail & junk mail for invoice, and add our email address to your preferred sender list (auctions@schraderauction.com), if you believe you have won items but have not received an e-mail within 1 hr. of auction ending, call Main Office @ 260-244-7606 on Thursday, November 30th. Text messages will be sent only as a reminder of pick up, not what lots bidders have won it is the buyers responsibility to contact the auction company. Land lines slow down the process of contact please list cell phone # during registration, mobile/SMS device.

LOAD OUT: 3 Day Load Out!! November 30th from 3pm-5pm Friday December 1st from 9am-1pm.

3rd Day Load Out Equipment Only!! Saturday December 2nd 9am-12 Noon! Loader Available All 3 Days till 12 Noon Saturday December 2nd. Plan Accordingly, Staff is Limited/ Come Prepared/Auction Company Does Not Provide Boxes, Packing, Hand Trucks or Provide Staff for Loading of Furniture & Large Items, Come Prepared!

No Cashier on Site Saturday December 2nd!! All Payments by Friday December 1st 1pm to be eligible for extended load out Saturday.

****UPDATE**** Any items paid for & agreed upon with Auction Manager (due to the volume of this service, delivery charges now apply) to be taken to Main Office in Columbia City for Pickup are required to be picked up within 1 business week of auction, deadline Friday December 8th by 5PM. NO EXCEPTIONS, it is the Buyers responsibility for pick up & reminders will not be sent out by Auction Company. Any Items NOT picked up within the 1 business week timeframe will be returned to Seller & no refunds will be issued.

SHIPPING: Shipping is available through 3rd party shipper Columbia City Going Postal 1080 Spartan Drive Suite A, Columbia City, IN. 46725 260-248-8608 Call for quote prior to bidding. ALL shipping & handling costs are the responsibility of the Buyer and said shipping/handling is between Buyer & Going Postal, not the Auction Company.

SELLERS: Randy and Sherry Krider



Visit Website for Updates!

AUCTION MANAGER:
Phil Wolfe 260-248-1191

#AC63001504, #AU19900139

Follow Us and Get Our Schrader iOS App:



PREVIEW: Wednesday, November 29 • 2-5pm
LOCATION: 3090 E Hartman Rd, Columbia City, IN 46725

800.451.2709 • SchraderAuction.com

TIMED ONLINE ONLY AUCTION

THURSDAY, NOVEMBER 30

LOTS START CLOSING AT 10:00AM



- CLASSIC CARS
 - ANTIQUE TRACTORS
 - COMBINES / EQUIPMENT
 - ANTIQUES / HOUSEHOLD
 - TOYS / COLLECTIBLES
 - SHOP EQUIPMENT
 - LAWN & GARDEN
- AND MUCH MORE!



Visit Website for Updates!

PREVIEW: Wednesday, November 29 • 2-5pm
LOCATION: 3090 E Hartman Rd, Columbia City, IN 46725

800.451.2709 • SchraderAuction.com

Whitley Co.
Indiana

TIMED ONLINE ONLY AUCTION

THURSDAY, NOVEMBER 30
LOTS START CLOSING AT 10:00AM



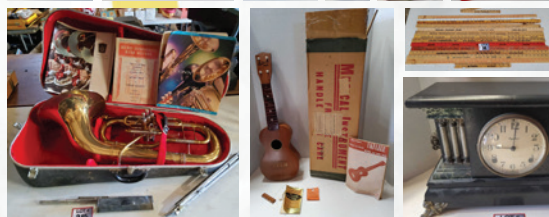
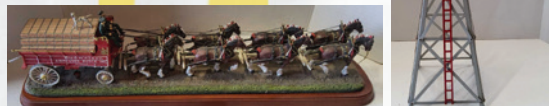
DIRECTIONS: From the intersection of US 30 (City Ford) & S 300 E: Travel north on S 300 E approximately 1.5 miles to E Hartman Rd, turn east (right) onto E Hartman Rd. Property on south (right) side of road. (Follow Signs.)

Catalogs & Absentee Bid Forms Available

PREVIEW: Wednesday, November 29 • 2-5pm
LOCATION: 3090 E Hartman Rd, Columbia City, IN 46725

ANTIQUES/HOUSEHOLD COLLECTIBLES

• **Flint & Walling F&L Model 37 Windmill, Kendallville, IN. Complete** • **40 + Clocks:** Victorian Slate, Ornate **New Haven/Maiden Spelter, Ingraham Eight Day Steeple/Mantle, Westclox Big Ben Alarm, Atkins & Co. Steeple, Fynetone Co. Lansdale PA Steeple, Waterbury Chime Clock No.505, Regulator/Centurion 35 Day Wall Clock, Cuckoo Clocks, Made in Germany** • **Antique Wagon Bed, 11' x 38" x 26"** • **Buescher Aristocrat 3 Valve Baritone** • **Riverside Dairy Columbia City Milk Bottle** • **Daisy Butter Churn** • **Red Columbia 2083 Pitcher Pump** • **Pyrex Woodland Nesting Bowls** • **Anchor Hocking/Fire King Peach Blossom & Blue Cornflower Casserole/Baking Dishes** • **2 QT Fondue Set** • **Fire Extinguishers** from Larwill School • **Glass Front/Lattice China Cabinet** • **Oak Curved/Glass Front Curio/Display Cabinet** • **Glass Front/Sliding Door Bookcase** • **Antique Oak Wash Stand** • **Duncan Phye Dining Table, 2 Leaves, Pads & 6 Chairs** • **Virginia House Dining Room Table/6 Chairs** • **Ice Cream Parlor Table/4 Chairs** • **Hallmark Quality Bedroom Set** • **Carolina 5 Drawer Dresser** • **Jewelry Cabinet/Armoire** • **Antique Oak Desk, originally came from Larwill school** • **Smith-Corona Skyriter Typewriter** • **The Perfecsoppe Stereoscope Viewer & Cards** • **Fireking:** Mugs, Bowl, Plates & Mixing Bowl w/Spout • **Cast:** Cairo Express Elephant Wagon, RCA Dog w/Phonograph, Pig Bank, Letters Mailbox, Uncle Sam Coin Banks, Wagner Ware Cast Iron Skillet • **KRW, Scorpion & Nesco 6420 Gold/Silver Metallic Helmets** • **Pink/Opaescent Hobnail Vase** • **Carnival Peacock Bowl** • **Kieninger & Obergfell, Germany Anniversary Clock** • **Burroughs Adding Machine** • **1960 Tractor/Implement Blue Book, 1960 Chevrolet, Lawn Boy Manuals** • **Columbia City Advertising:** Carousel, Kriders, Pumphrey, Strouses, 1972 Road Map • **Sunburst Aluminum Glasses** • **Anchor Hocking**



Punch Set • **Cookie Jars:** Holiday Goose, JD, Cow • **Express 2WD Remote Control Tractor** • **30+ Mary Moo & Denim Days** by Homco Figurines • **1970's Royal Luster Glasses & Chrome Caddy** • **Maytag Neptune Washer & Electric Dryer** • **Lighted Reindeer & Christmas Trees** • **Dinnerware Sets:** Sangostone Country Cottage, Vernonware Homespun Plaid, Royal Geoffrey Fine China Snack Plate/Cups, P.S.A.G Bavaria, K.T. & K. S-V China Set • **Char-Broil Smoker** • **30+ Longaberger Baskets** • **Stoneware Crock Bowls & Pitchers** • **Robinson Ransbottom Spongeware 3PC Canister Set** • **Antique Burley Winter Ship Captain/Windmill Pitcher & 2 Mugs** • **Men's FRYE Cowboy Boots Size 8R** • **Christmas Decorations** • **Singer Stylist 533 Sewing Machine & Sewing Notions** • **Vintage Cameras:** Kodak, Brownie/Hawkeye • **Spinning Wheel** • **Costume Jewelry:** Necklaces, Bracelets, Brooches, Rings, Watches • **Loose Stones & 1-/10-12K GF Spectacles** • **14K & 18K Watch, Earrings, Necklaces, 1 Necklace 18K, All Other Jewelry 14K** • **Rolex Bellini Woman's Watch** • **Lamps** • **Pictures** • **Vintage Bartlett Collins Grapevine Pitcher & (6) Glasses** • **Royal Crown Lay-Z-Susan/Chafing Dish Combo** • **Schweiger Flora Sofa** • **Blue Accent Chair** • **Longaberger Wrought Iron Treasure Basket Table & Side Tables** • **Rattan/Wicker Barrel Chair & Side Table w/Glass Top** • **Edco Large 3 Pc. Snowmobile Suit** • **Poinsette Fort Wayne Mink Stole** • **Farm/Seed/Mizpah Advertising Baseball Hats** • **Brass Hall Tree** • **Country Comfort Wood Stove** • **Franklin Fireplace Wood Burning Stove** • **Vintage Rotary Payphone**

TOYS

• **1959 Mattel Outdraw the Outlaw** • **1960 Roy Smeck Ukulele** • **Strombecker Road Racing Set** • **Marx Super Highway Service Truck** • **Auburn**

Rubber Disney Firetruck • **Mighty Mike Truck & Trailer** • **Tin Train Set** • **Cap Guns** • **Tudor NFL Electric Football Game** • **Eagle Stanley Cup Electric Table Hockey Game** • **Twister, Tiddly Winks, Chess Game** • **Dart Boards** • **Deluxe All Pro Table Tennis & Wilson Badminton** • **Remco Treacherous Camelback Skyway/Mighty Mike Trucks** • **Vintage 1960's Deluxe Reading Corp. Playmobile Dashboard** • **Vintage Christmas Fireplace w/Swivel Stand & Logs** • **Jarts** • **Budweiser/Anheuser Busch Clydesdale Horse Drawn Wagon** • **Danbury Mint Tending the Crops, Serial # A7621** • **Danbury Mint Turning the Soil, Serial # A7621** • **2003 Ridgewood Collection IU "Go to Market"** • **Gearbox 1920's Wayne/Shell Gas Pump** • **Air Signature North American P-51D Mustang Airplane w/Stand, 1/48 scale** • **IH Wind Mill 1/20 scale** • **Ertl IH Farmall 350 Tractor 1/16 scale** • **Country Classics Case IH/MD 22-36 Tractor, 1/16 scale** • **Golden Jackpot by WACO Slot Machine** • **1965 Dick Tracy/Colgate Soaky Bath Container** • **Road Legends 1948 Tucker 1/18 scale** • **Ertl IH Historical Tractor Set** • **NAPA 1949 Red Baron/Overseas Motor 22 Collector's Edition, 1/24 scale** • **Spec Cast Budweiser Semi Truck/Trailer** • **First Gear 4400 Series International Collector's Edition, 1/34 scale** • **Cragstan Patrol Helicopter & Fine Toys Soap Box Derby**

SHOP EQUIPMENT/LAWN & GARDEN

• **Century Dual Purpose Wire Feed Welder** • **Earthway Mod. 1001-B Garden Seeders** • **2 Pc. Cement Elephant Fountain, 24" in Height** • **Pet Carriers & Heated Water Bowls & Tank De-Icer** • **Shappell Mod. S3000 Portable Ice Fishing Shelter** • **Otter II Sled** • **Montgomery Wards Seeder** • **Kohler 12 Hp Motor, Complete, Motor Free** • **Roll Around Cement Mixer, Motor Free** • **(2) Aluminum Highway Light Pole, From US 30 & 69 Interchange,**

Can be Modified For Flag Pole, 38' 4"

MOTORCYCLES/CUB CADET/BLADE

• **Honda Trail 90, Shows 2756 Miles, Motor Froze** • **Honda 90, Motor Free, Shows 4241 Miles** • **Cub Cadet 127 Hyd. Drive Garden Tractor, New Battery 09/23, 46" Deck, 12 Hp. Running Condition** • **IH Cub Cadet 42" Blade**

IMPLEMENTS/FUEL TANKS

• **12' Pull Type Spring Tooth Harrow** • **7' Fast Hitch Adjustable Blade** • **Antique John Deere Steel Wheel Pull Type Lister/Rig till Machine, 26" Lister** • **JD Pull Type Steel Wheel Sulky/ Dump Rake, 114" Rake** • **JD 7' Sickle Bar Mower** • **New Idea 7' Sickle Bar Mower** • **Jeoffroy Pull Type Soil Control Cultivator, 103" Span, 15" x 13" Shovels, Made in Amarillo, Tx** • **Agric AL 60 3 Pt. Tiller, PTO Drive, S/N B349259** • **Ford 504 Square Bale, PTO Drive, Twine, 14-80, S/N 17942** • **IH 45 Wide Shank Cultivator, w/wings 17", Drag** • **Midwest Front End Harrow for a 400 Cyclo IH Planter, Midwest Industries, 14'** • **IH 400 Cyclo Planter, Gandy Seed Boxes, 30" Spacing/ Rows, PTO Drive, No Till, Extra Seed Drums** • **Belt Pulley for WC Allis-Chalmers** • **Ford Quick Hitch** • **Ford Slip Scoop, Reversible, 26" X 32"** • **2 Bottom Allis-Chalmers Plow, Plow Points 14"** • **36' New Idea Model 176 Elevator, PTO Drive, S/N 20566** • **8' Ford 535 Hay Bine, PTO Drive, 14NW290, S/N 3624** • **Tractor Weights:** (3) IH 6818-D Wheel Weights • (5) IH 75LBS Suitcase Weights, 383392K1 • (4) IH Split Wheel Weights, 400078 R2 SD • **IH Fast Hitch Drawbar** • (2) 275 Gallon Fuel Tanks • **Silver 300 Gallon Fuel Tank on Stand**



AUCTION MANAGER:
Phil Wolfe 260-248-1191

800.451.2709
SchraderAuction.com



TIMED ONLINE ONLY
VIRTUAL
LIVE WITH ONLINE