

Field: Rieman, Karl (around house) 58.66 ac. FSA 10349  
Client: Midnight Farms | Farm: Karl Rieman



### 2022 Corn Harvest: Yield

Start: Oct 26, 2022 4:43 PM  
End: Oct 27, 2022 12:15 PM

#### Work Totals

Area Harvested: 60.9 ac  
Total Yield: 12,376 bu  
Wet Weight: 11,632.1 lb/ac

Yield: 203.09 bu/ac  
Moisture: 16.9 %  
Total Wet Weight: 708,828 lb

#### Performance

Speed: 4.1 mi/hr  
Working Time: 4 hrs 19 mins  
Throughput (Dry): 2,858 bu/hr  
Fuel Efficiency: 149.1 bu/gal  
Fuel: 19 gal/hr

Productivity: 14.1 ac/hr  
Total Fuel: 83 gal  
Throughput (Wet): 163,686.9 lb/hr  
Fuel: 1.4 gal/ac

Map: Overview



#### Equipment

Midnight S790 815019 1H0S790SCLT815019

#### Varieties

---

5829A4

5909AM

Field: Rieman, Karl (high school) 86.22ac. FSA 10349

Client: Midnight Farms | Farm: Karl Rieman



### 2022 Corn Harvest: Yield

Start: Oct 13, 2022 5:16 PM

End: Oct 14, 2022 1:58 PM

#### Work Totals

Area Harvested: 85.9 ac

Total Yield: 18,442 bu

Wet Weight: 12,741 lb/ac

Yield: 214.72 bu/ac

Moisture: 19.8 %

Total Wet Weight: 1,094,317 lb

#### Performance

Speed: 3.9 mi/hr

Working Time: 6 hrs 21 mins

Throughput (Dry): 2,898 bu/hr

Fuel Efficiency: 148.1 bu/gal

Fuel: 20 gal/hr

Productivity: 13.5 ac/hr

Total Fuel: 124.5 gal

Throughput (Wet): 171,957.1 lb/hr

Fuel: 1.4 gal/ac

Map: Overview



#### Equipment

Midnight S790 815019 1H0S790SCLT815019

#### Varieties

---

5909AM

Field: Rieman, Karl (across from house) 201.24 ac. FSA 10349

Client: Midnight Farms | Farm: Karl Rieman



**2022 Corn Harvest: Yield**

Start: Oct 14, 2022 2:07 PM

End: Oct 28, 2022 1:42 PM

**Work Totals**

Area Harvested: 198.9 ac

Total Yield: 42,241 bu

Wet Weight: 12,293.6 lb/ac

Yield: 212.34 bu/ac

Moisture: 17.8 %

Total Wet Weight: 2,445,622 lb

**Performance**

Speed: 3.8 mi/hr

Working Time: 15 hrs 7 mins

Throughput (Dry): 2,793 bu/hr

Fuel Efficiency: 150.1 bu/gal

Fuel: 19 gal/hr

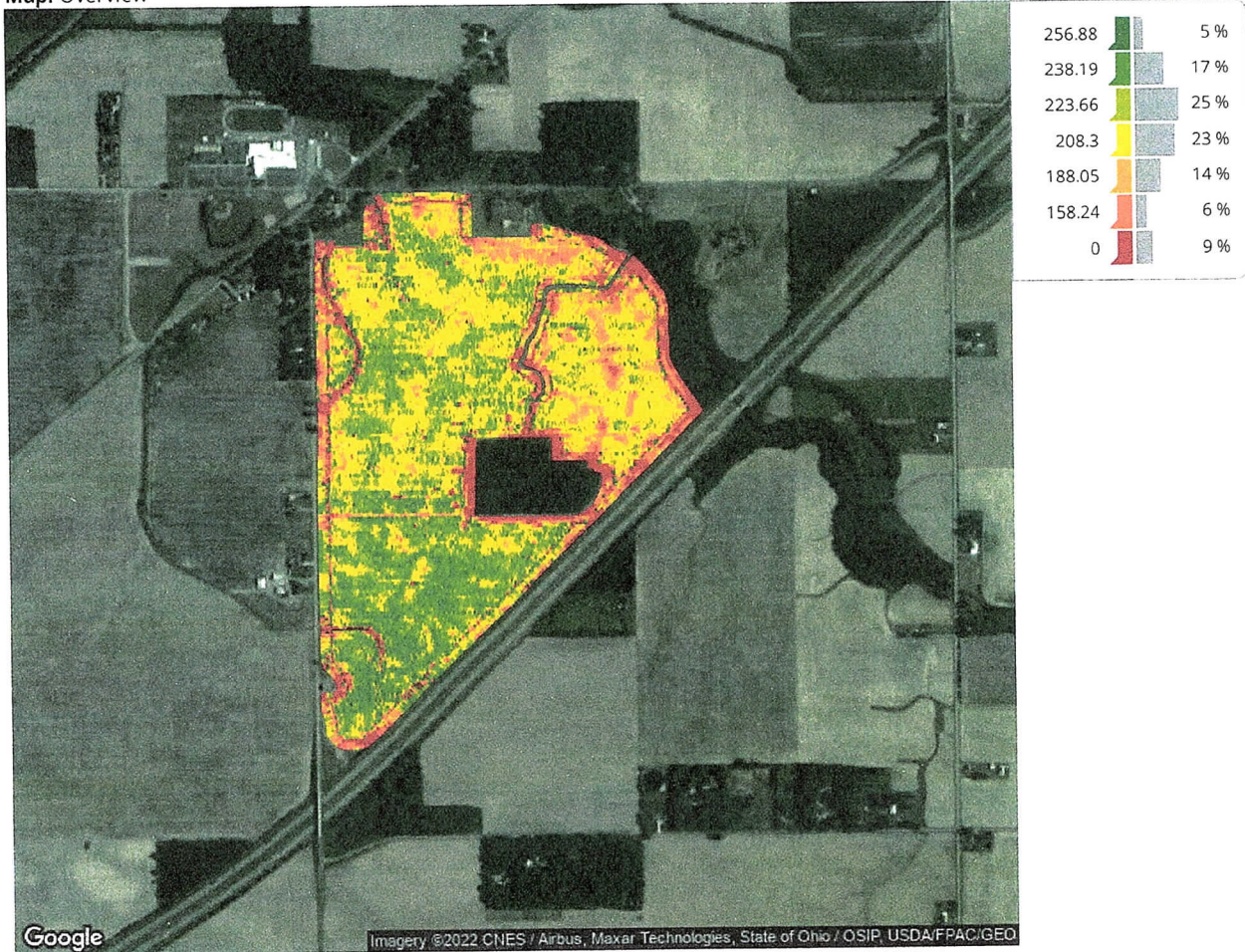
Productivity: 13.2 ac/hr

Total Fuel: 281.4 gal

Throughput (Wet): 161,711.3 lb/hr

Fuel: 1.4 gal/ac

**Map: Overview**



**Equipment**

Midnight S790 815019 1H05790SCLT815019

**Varieties**

---  
5829A4

Field: Rieman, Karl (SR 235) 69.73 ac. FSA 10349  
Client: Midnight Farms | Farm: Karl Rieman



Dorman Farm

**2022 Soybeans Harvest: Yield**

Start: Sep 23, 2022 1:52 PM  
End: Sep 23, 2022 7:15 PM

**Work Totals**

Area Harvested: 70.7 ac  
Total Yield: 4,431 bu  
Wet Weight: 3,767 lb/ac

Yield: 62.7 bu/ac  
Moisture: 11.3 %  
Total Wet Weight: 266,240 lb

**Performance**

Speed: 4.3 mi/hr  
Working Time: 3 hrs 11 mins  
Throughput (Dry): 1,391 bu/hr  
Fuel Efficiency: 68.5 bu/gal  
Fuel: 20 gal/hr

Productivity: 22.2 ac/hr  
Total Fuel: 64.7 gal  
Throughput (Wet): 83,558.5 lb/hr  
Fuel: 0.9 gal/ac

Map: Overview



**Equipment**

Midnight S790 815019 1H0S790SCLT815019

**Varieties**

2775XF

Brand Name: Becks

Field: Rieman, Karl( Nichols) 18.0 ac. FSA 10349

Client: Midnight Farms | Farm: Karl Rieman



### 2022 Soybeans Harvest: Yield

Start: Oct 13, 2022 3:13 PM

End: Oct 13, 2022 4:24 PM

#### Work Totals

Area Harvested: 16.7 ac

Total Yield: 743 bu

Wet Weight: 2,667.9 lb/ac

Yield: 44.4 bu/ac

Moisture: 11.8 %

Total Wet Weight: 44,623 lb

#### Performance

Speed: 3.7 mi/hr

Working Time: 57 mins

Throughput (Dry): 778 bu/hr

Fuel Efficiency: 44.1 bu/gal

Fuel: 18 gal/hr

Productivity: 17.5 ac/hr

Total Fuel: 16.8 gal

Throughput (Wet): 46,765.9 lb/hr

Fuel: 1 gal/ac

Map: Overview



#### Equipment

Midnight S790 815019 1H05790SCLT815019

#### Varieties

TEST

Field: Rieman, Karl (west of ditch) 160.84 ac. FSA 10349

Client: Midnight Farms | Farm: Karl Rieman



### 2022 Soybeans Harvest: Yield

Start: Sep 24, 2022 1:38 PM

End: Oct 1, 2022 1:01 PM

#### Work Totals

Area Harvested: 161.2 ac

Total Yield: 11,434 bu

Wet Weight: 4,296.6 lb/ac

Yield: 70.95 bu/ac

Moisture: 13.5 %

Total Wet Weight: 692,464 lb

#### Performance

Speed: 4 mi/hr

Working Time: 7 hrs 41 mins

Throughput (Dry): 1,488 bu/hr

Fuel Efficiency: 68 bu/gal

Fuel: 22 gal/hr

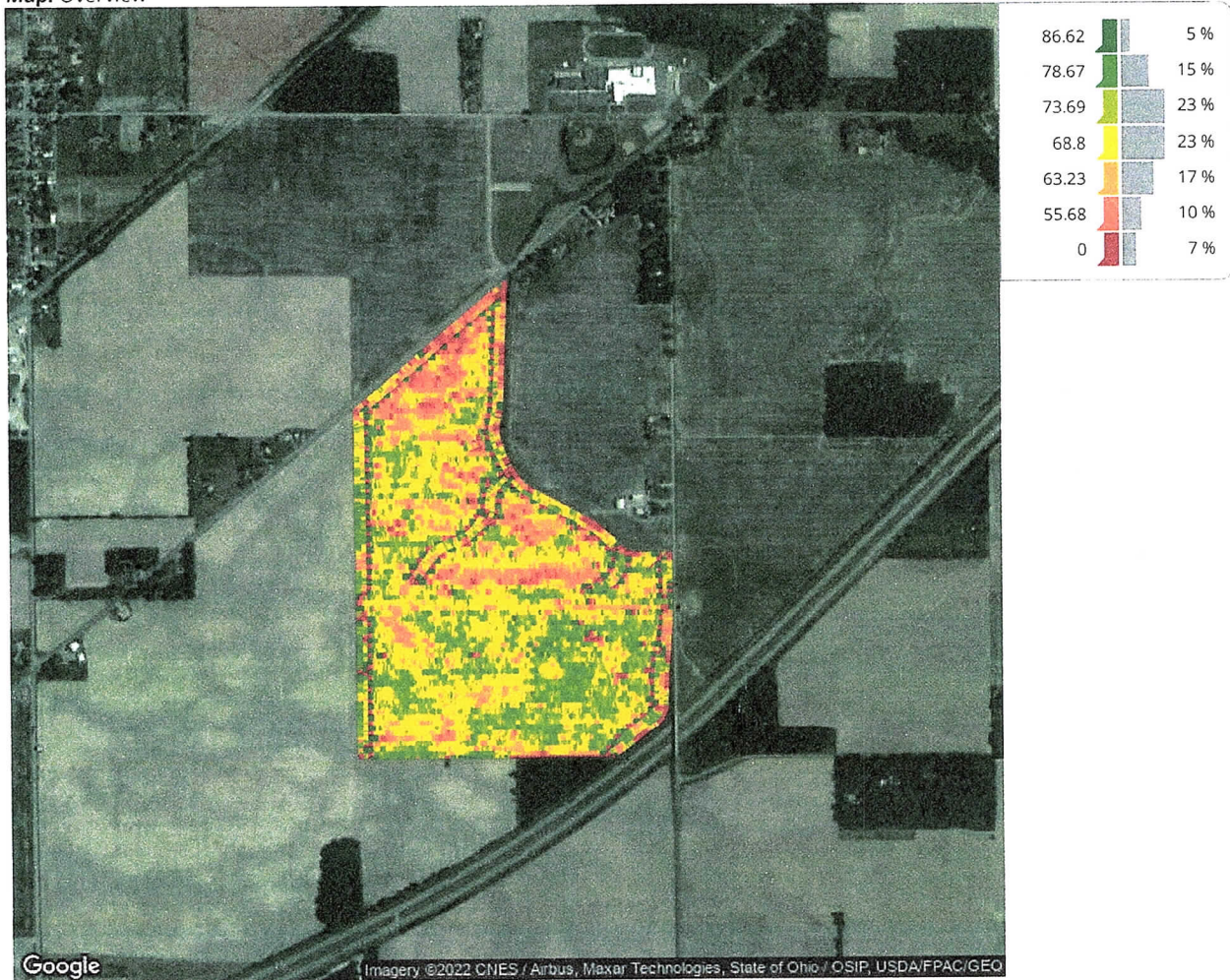
Productivity: 21 ac/hr

Total Fuel: 168.1 gal

Throughput (Wet): 90,114.7 lb/hr

Fuel: 1 gal/ac

Map: Overview



#### Equipment

Midnight S790 815019 1H0S790SCLT815019

#### Varieties

TEST

**Field:** Rieman, Karl (Kelly Farm) 32.15 ac. FSA 10349  
**Client:** Midnight Farms | **Farm:** Karl Rieman



### 2022 Soybeans Harvest: Yield

**Start:** Oct 1, 2022 5:52 PM  
**End:** Oct 1, 2022 7:49 PM

#### Work Totals

**Area Harvested:** 31.9 ac  
**Total Yield:** 2,071 bu  
**Wet Weight:** 3,907.1 lb/ac

**Yield:** 65.01 bu/ac  
**Moisture:** 12.3 %  
**Total Wet Weight:** 124,473 lb

#### Performance

**Speed:** 3.8 mi/hr  
**Working Time:** 1 hr 37 mins  
**Throughput (Dry):** 1,268 bu/hr  
**Fuel Efficiency:** 64.4 bu/gal  
**Fuel:** 20 gal/hr

**Productivity:** 19.5 ac/hr  
**Total Fuel:** 32.1 gal  
**Throughput (Wet):** 76,232.7 lb/hr  
**Fuel:** 1 gal/ac

**Map:** Overview



#### Equipment

Midnight S790 815019 1H0S790SCLT815019

#### Varieties

TEST

Field: Rieman, Karl (Shearer all) 54.81+72.62=127.43 ac. FSA 10349

Client: Midnight Farms | Farm: Karl Rieman



### 2022 Soybeans Harvest: Yield

Start: Oct 1, 2022 1:31 PM

End: Oct 12, 2022 5:24 PM

#### Work Totals

Area Harvested: 123.7 ac

Total Yield: 8,069 bu

Wet Weight: 3,932.5 lb/ac

Yield: 65.22 bu/ac

Moisture: 12.2 %

Total Wet Weight: 486,507 lb

#### Performance

Speed: 4.1 mi/hr

Working Time: 5 hrs 51 mins

Throughput (Dry): 1,377 bu/hr

Fuel Efficiency: 65.9 bu/gal

Fuel: 21 gal/hr

Productivity: 21.1 ac/hr

Total Fuel: 122.5 gal

Throughput (Wet): 83,053.5 lb/hr

Fuel: 1 gal/ac

Map: Overview



#### Equipment

Midnight S790 815019 1H0S790SCLT815019

#### Varieties

TEST