

# FOR SALE

Brower SS16W

## 24.3 Acres +/- Pretty Woodland

### Between Hagerstown and Cambridge City, IN Easy Access From I-70

**PROPERTY LOCATION:** From Hwy. 1 and Hwy. 70 north 2 miles to Swoveland Rd. then 1 ½ miles on the right.

#### **FEATURES INCLUDE:**

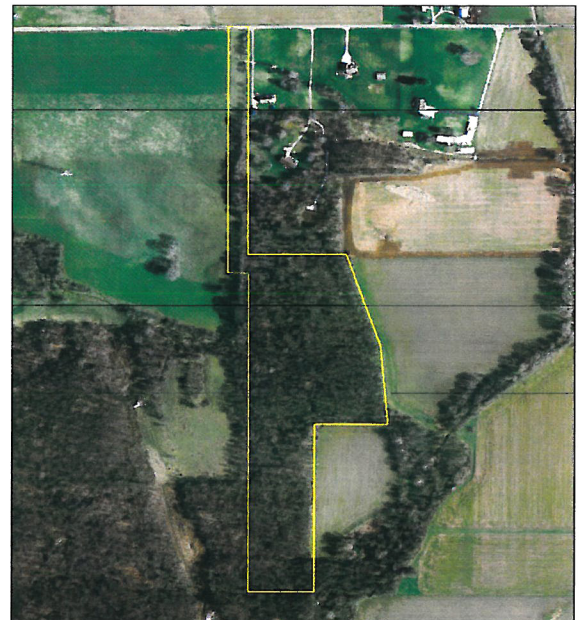
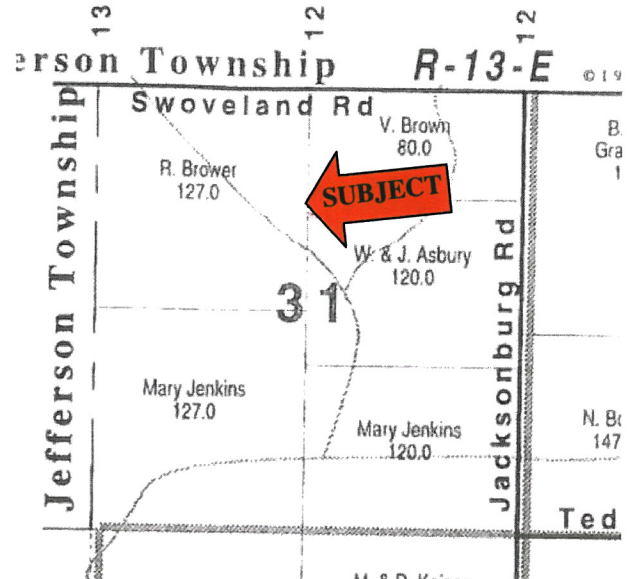
- \*20 acres mature woodland
- \*Nice rolling woodland with stream
- \*90 ft. of frontage on Swoveland Rd.
- \*Great secluded potential building site
- \*Long term timber potential with 19.2 acres Classified Forest
- \*Great hunting and recreation opportunity for the whole family
- \*Electric service nearby
- \*Existing access and lane off Swoveland Rd.
- \*Listing price \$110,000

\*Hagerstown Schools

\*Taxes: \$45.44/year

\*Owner: Robert Brower

**SCHRADER**  
Real Estate & Auction Co., Inc.



**LISTING AGENT:** Steven Slonaker

Schrader Real Estate & Auction Co.

765-855-2045 or 877-747-0212