

COMMERCIAL BUILDING

For Sale



14,984 sq ft
Building on

2.894±
ACRES

WHITLEY COUNTY, IN

- Great frontage and visibility off Business 30 • Office space and store area renovated in 2016/2017
- Very well-maintained building • Option to include another 1.25 acres



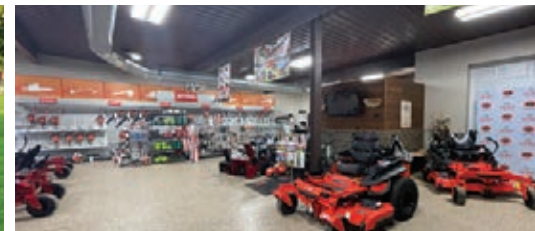
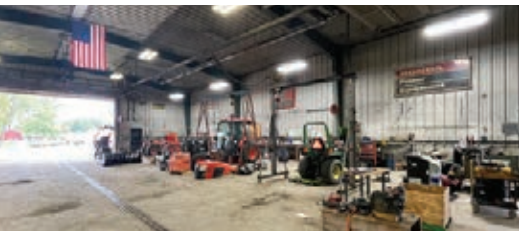
Zoning: Commercial • Address: 751 E Business 30

Directions: At the intersection of US 30 and E Business 30 near Paige's crossing, take a left on E Business 30 and continue for 2 miles. The property will be on your right.

PRICE: \$600,000

PROPERTY DESCRIPTION:

Now that the owners have moved to a new location a short distance away, the More Farm Store Building is for sale and is a unique opportunity to purchase a large building and commercial lot within Columbia City city limits. The property contains a 14,984 sq. ft. building that includes several large workshops as well as a completely furnished store area and office spaces. The property also contains two out-buildings for storage. There is an additional 1.25 acres that may be included on any offers. This is a rare chance to purchase a large lot in Columbia City!



The information on this sheet is subject to verification and no liability for errors or omissions is assumed by the Schrader Agency.

MORE • LS03W

**SCHRADER**
Real Estate and Auction Company, Inc.

800-451-2709
schraderauction.com
/listings

SCHRADER REAL ESTATE & AUCTION CO. INC.

Listing Agent: LUKE SCHRADER

Cell - 260-229-7089 Office: 800-451-2709
email: luke@schraderauction.com

COMMERCIAL BUILDING

For Sale



14,984 sq ft
Building on

2.894±
ACRES

WHITLEY COUNTY, IN



Additional
1.25± Acres
Available

2.894± Acres

E Business 30

S Tower View Dr

E 100 S

The information on this sheet is subject to verification and no liability for errors or omissions is assumed by the Schrader Agency.

MORE • LS03W



800-451-2709
schraderauction.com
/listings

SCHRADER REAL ESTATE & AUCTION CO. INC.
Listing Agent: LUKE SCHRADER
Cell - 260-229-7089 Office: 800-451-2709
email: luke@schraderauction.com