

*Cover page for:*

# **Preliminary Survey Drawings**

*Prepared by:*

**Milligan Surveying**

*Including:*

- Preliminary drawing of 363.79-acre parcel comprising Auction Tracts 1 & 2 combined.
- Preliminary drawing of 365.906-acre parcel comprising Auction Tracts 3, 4 & 6 combined.
- Preliminary drawing of 232.329-acre parcel comprising Auction Tract 5.

**Note:** A final post-auction survey shall be obtained for each closing.

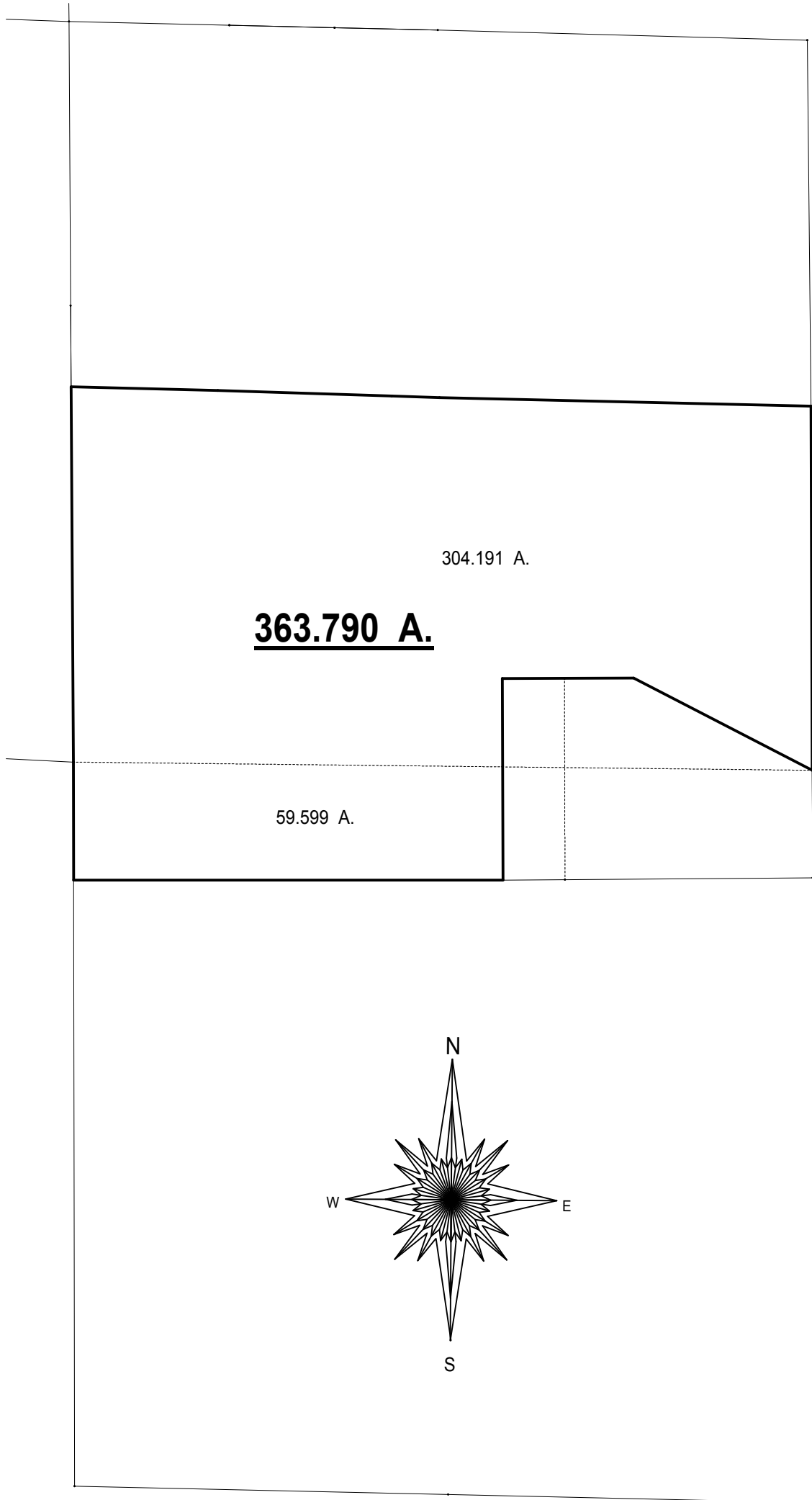
*For October 30, 2020 auction to be conducted by:*

**Schrader Real Estate and Auction Company, Inc.**

*On behalf of:*

**Midwest Farms, LLC**

SEC. 8, T28N, R1W



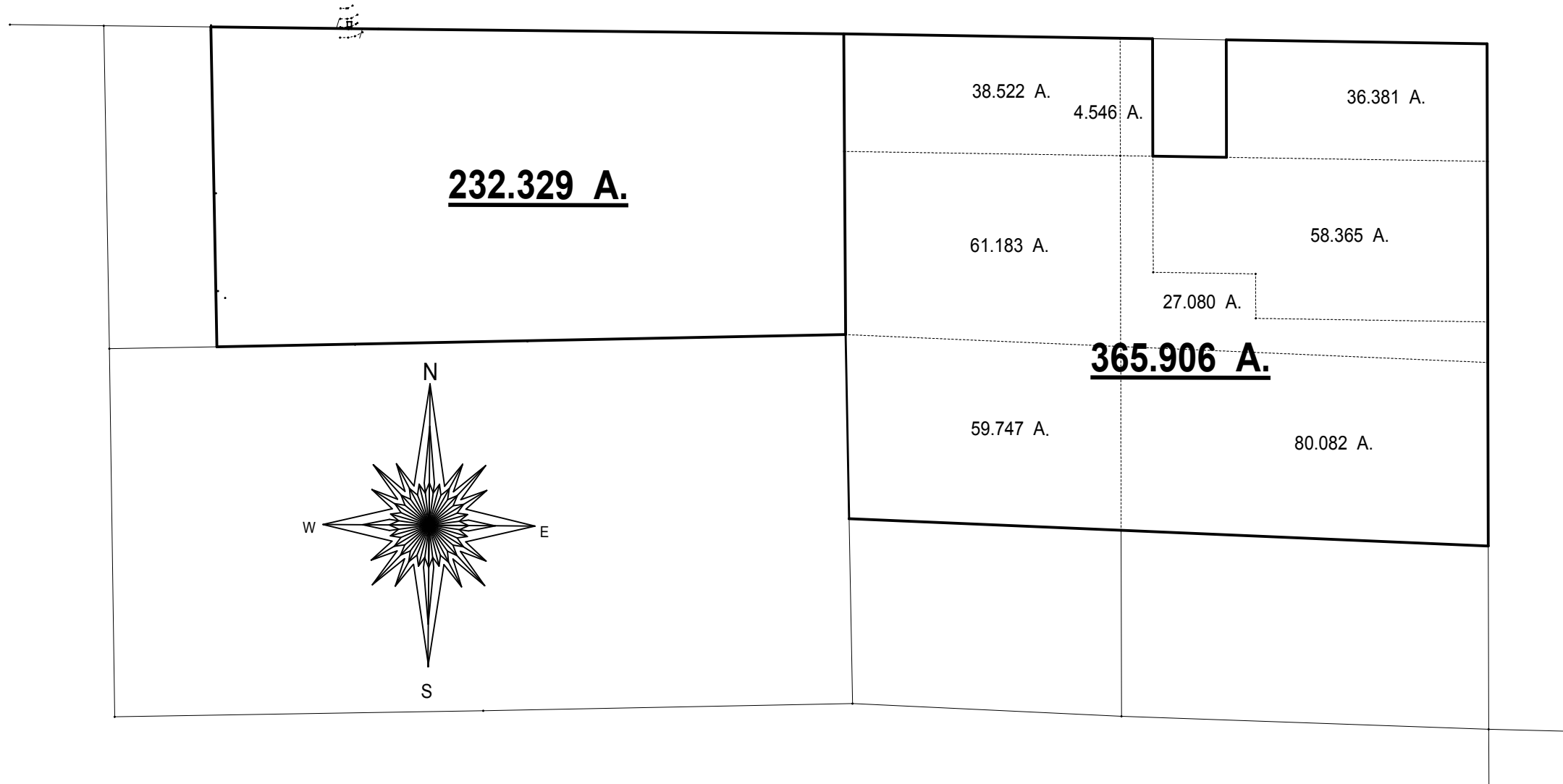
SEC. 17, T28N, R1W

"This drawing is not intended to be represented as a retracement or original boundary survey, a route survey, or a Surveyor Location Report."

This plat is intended for informative purposes.

SEC. 1, T28N, R2W

SEC. 6, T28N, R1W



"This drawing is not intended to be represented as a retracement or original boundary survey, a route survey, or a Surveyor Location Report."

This plat is intended for informative purposes.