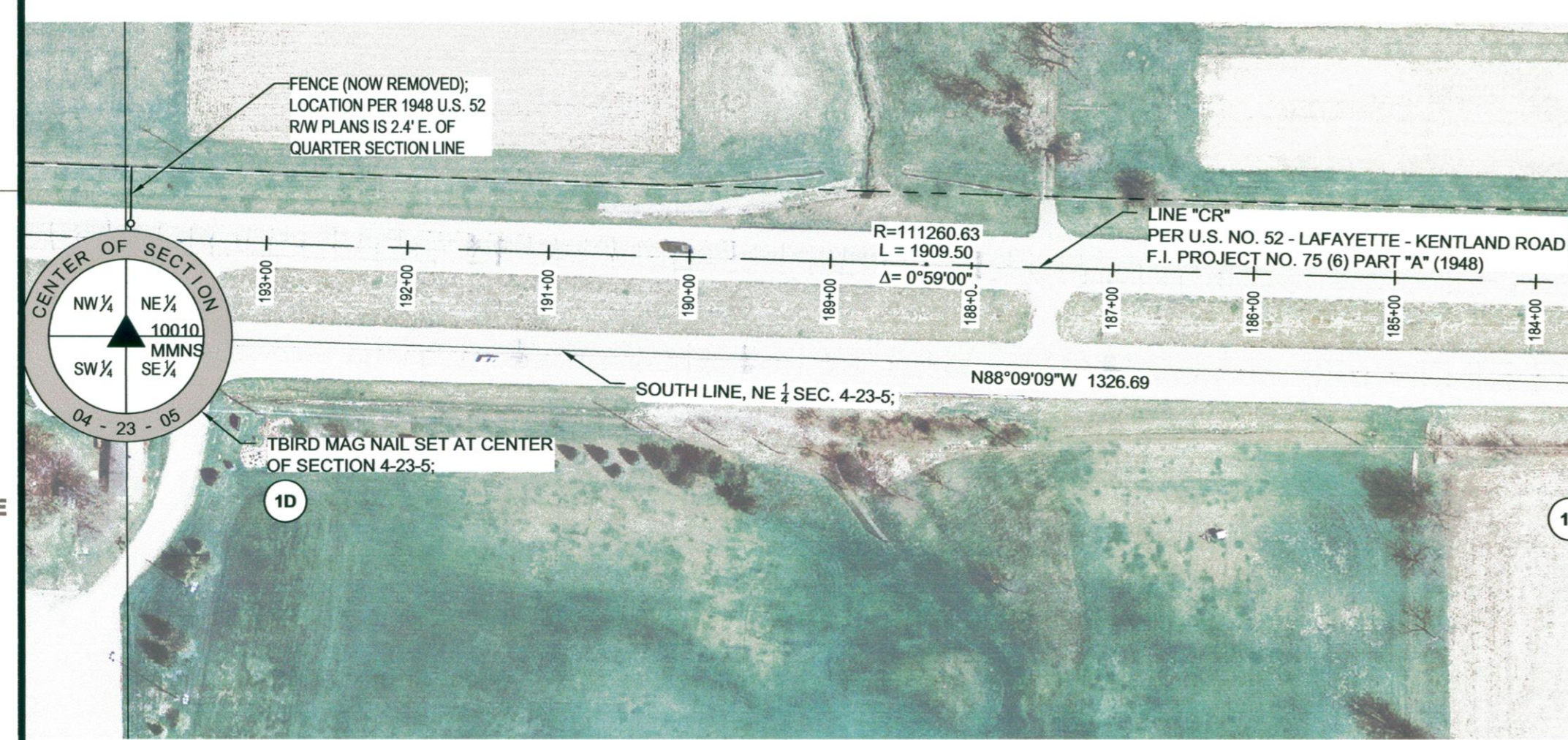


LEGEND

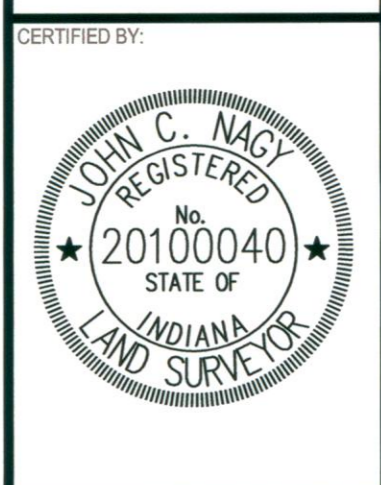
- ▲ = SECTION CORNER MONUMENTATION
- = "VESTER & ASSOCIATES, INC." CAPPED REBAR FOUND ON LINE OR AT CORNER UNLESS OTHERWISE NOTED
- ◉ = SQUARE BOLT IN CONCRETE RECOVERED AT CORNER OR ON LINE UNLESS OTHERWISE NOTED
- ◐ = STONE FOUND AT CORNER OR ON LINE UNLESS OTHERWISE NOTED
- = CONCRETE RIGHT OF WAY MARKER AT CORNER OR ON LINE UNLESS OTHERWISE NOTED
- = 5/8" DIAMETER REBAR WITH YELLOW PLASTIC CAP STAMPED "TBIRD FIRM #0052"
- ⊙ = 2" MAG NAIL WITH STAINLESS STEEL WASHER STAMPED "TBIRD SURVEYING FIRM #0052" SET AT CORNER AT GRADE UNLESS OTHERWISE NOTED
- ⊛ = SQUARE OR ROUND FENCE POST AS NOTED
- XX = SEE CORRESPONDING ITEM IN SURVEYOR REPORT
- TCS SCD (XX-XX) = REFER TO SECTION CORNER DOSSIER ON FILE IN THE TIPPECANOE COUNTY SURVEYOR'S OFFICE
- (XX-XX) = RECORD DIMENSION (WHEN ONLY ONE DIMENSION IS SHOWN, THE MEASURED DIMENSION AND RECORD ARE THE SAME)
- (P.O.B.) = POINT OF BEGINNING
- XX ——— = INDICATES DISTANCE EXISTING FENCE LINE OR OTHER OCCUPATION EVIDENCE LIES FROM TITLE OR ALIQUOT SECTION LINE. THE FENCE LINE OR OTHER OCCUPATION EVIDENCE IN THIS LOCATION LIES ON THE SAME SIDE OF SAID TITLE LINE AS DIMENSION INDICATOR IS ON.
- = ROADWAY CENTERLINE
- = EXISTING FENCE LINE AS NOTED
- = ADJOINING / CURRENT TITLE LINE



MARK	DATE	DESCRIPTION

TBIRD
 DESIGN SURVEYING CORPORATION
Engineering & Surveying
 105 NORTH 10TH STREET • LAFAYETTE, INDIANA
 phone: (765) 742-1900 • fax: (765) 742-1905
 www.tbirddesign.com

A PART OF THE NORTHEAST
 QUARTER OF SECTION 04,
 TOWNSHIP 23 NORTH, RANGE 05
 WEST, WABASH TOWNSHIP,
 TIPPECANOE COUNTY, INDIANA

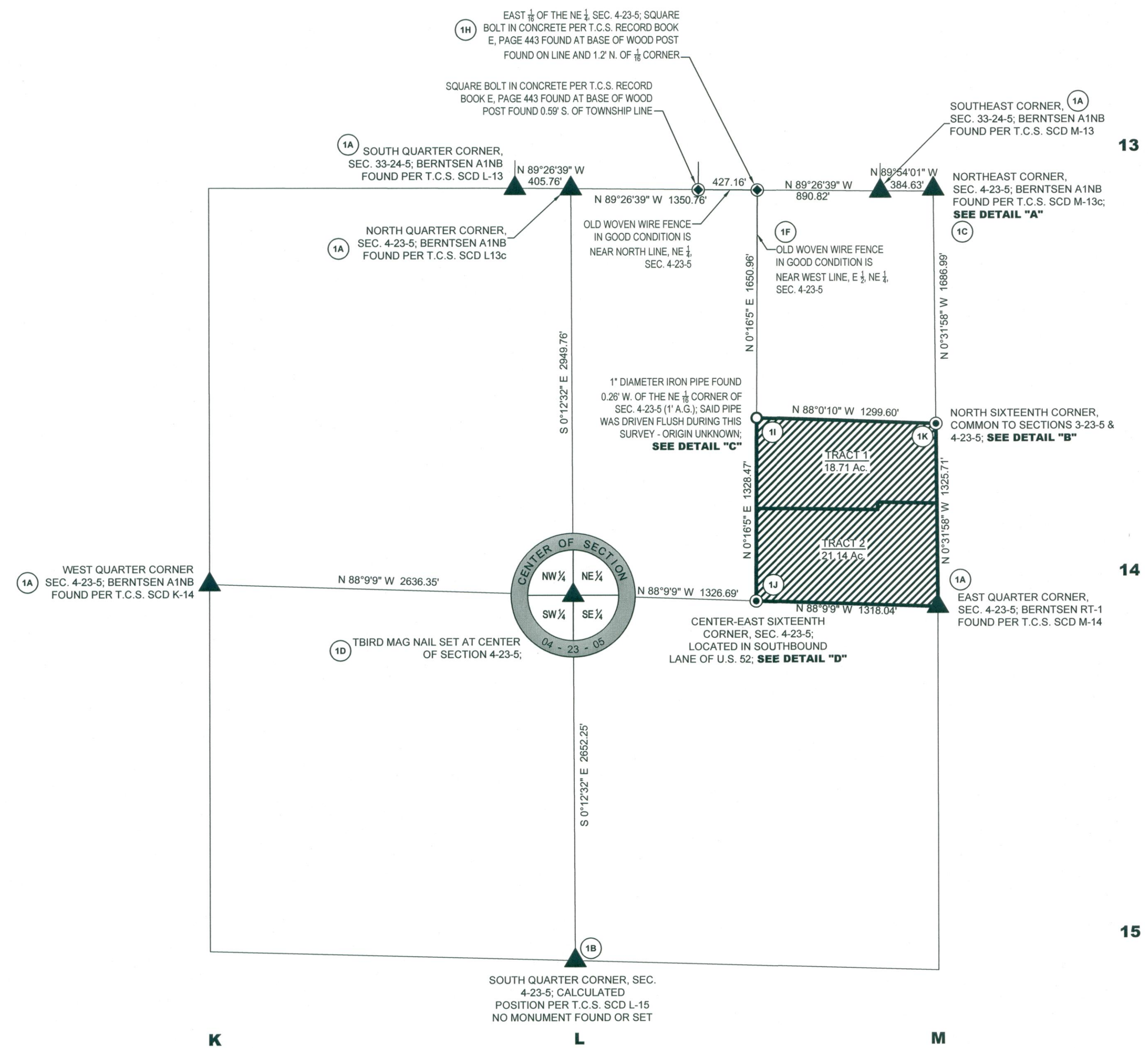


CANDLELIGHT DEVELOPMENT
SCOTT LODS
 3350 W COUNTY ROAD 250 N
 WEST LAFAYETTE, IN 47906

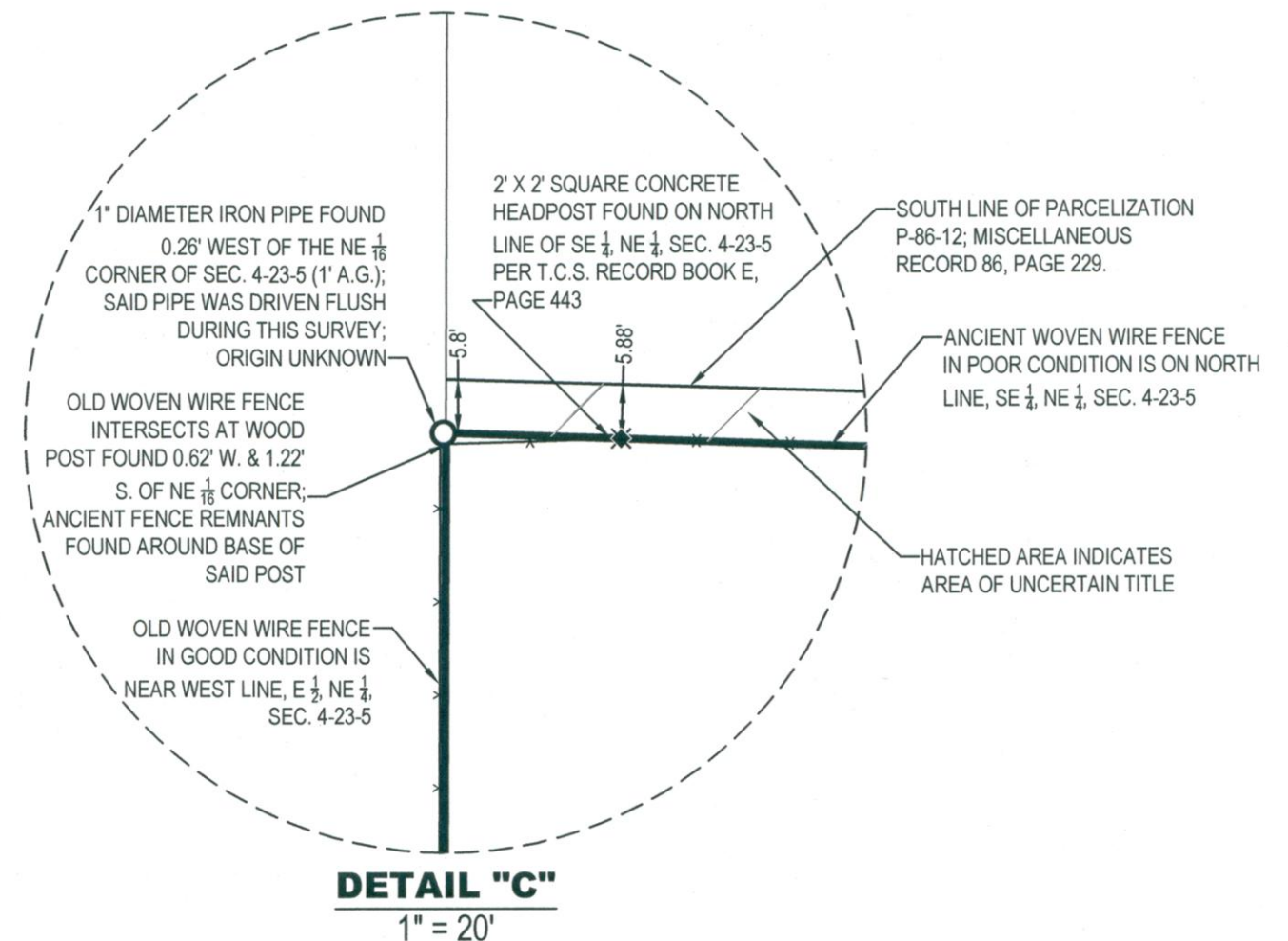
PLAT OF SURVEY

PROJECT:	DATE:
040905	1/5/2007
DRAWING FILE:	DRAWN BY:
RULE 12 CANDLELIGHT_R.DWG	PEW/JCN
CHECKED BY:	TITLE:
PEW/JCN	

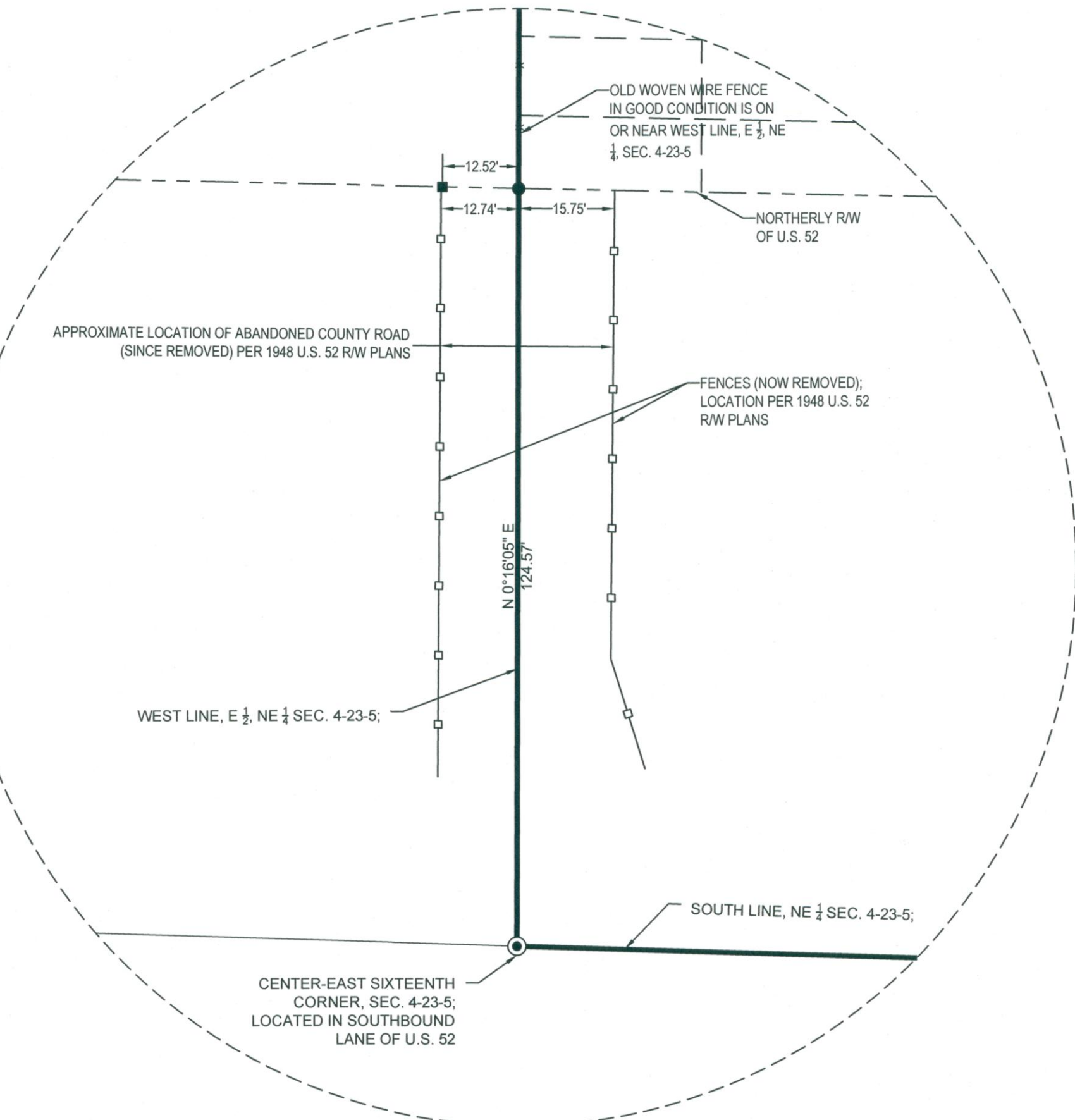
A
B
C
D
E



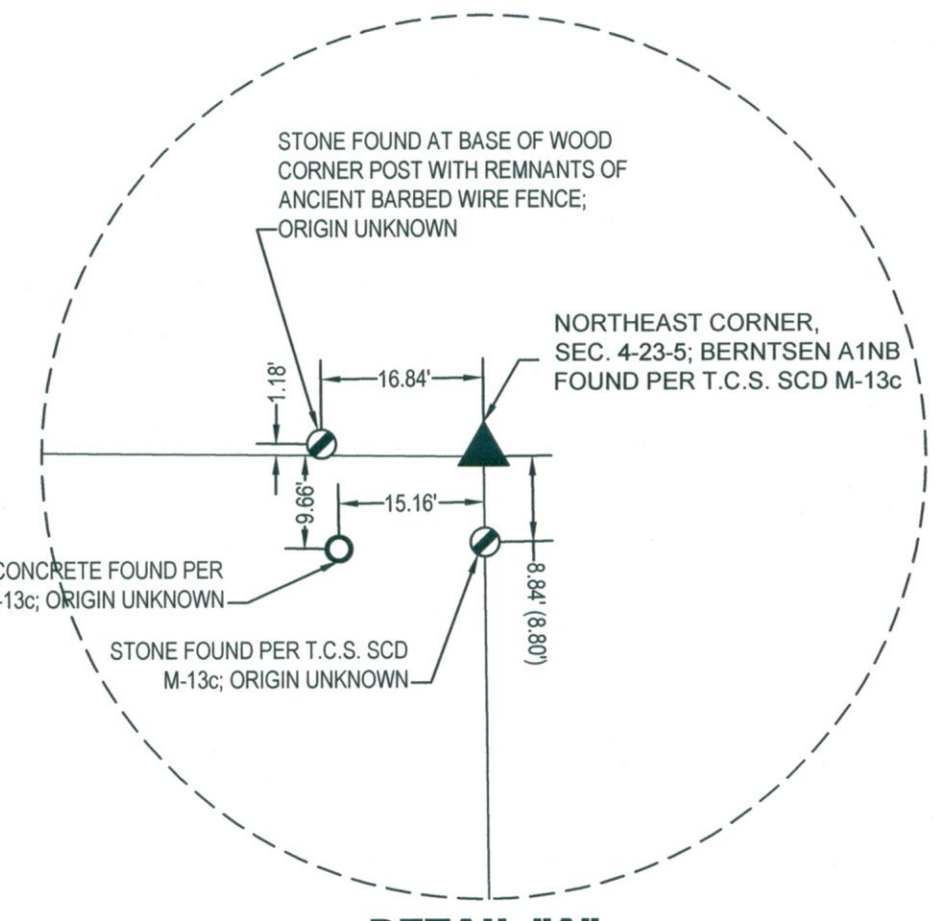
SECTION DETAIL
1" = 600'



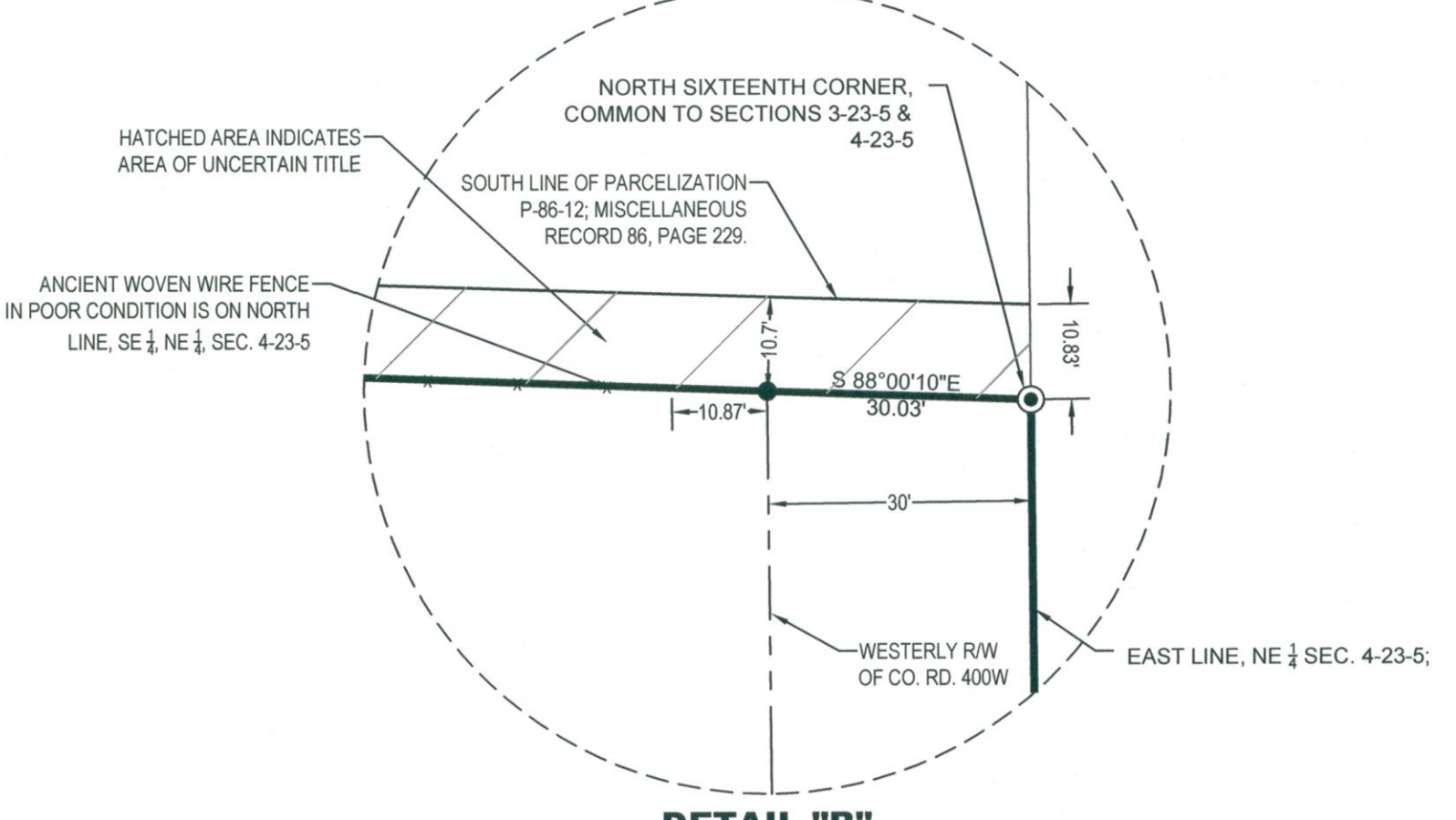
DETAIL "C"
1" = 20'



DETAIL "D"
1" = 20'



DETAIL "A"
1" = 20'



DETAIL "B"
1" = 20'

MARK	DATE	DESCRIPTION



A PART OF THE NORTHEAST QUARTER OF SECTION 04, TOWNSHIP 23 NORTH, RANGE 05 WEST, WABASH TOWNSHIP, TIPPECANOE COUNTY, INDIANA



CANDLELIGHT DEVELOPMENT
SCOTT LODS
3350 W COUNTY ROAD 250 N
WEST LAFAYETTE, IN 47906

SURVEY DETAILS

PROJECT:	DATE:
040905	1/5/2007
DRAWING FILE:	
RULE 12 CANDLELIGHT - R.DWG	
CHECKED BY:	DRAWN BY:
PEWJCN	PEWJCN
TITLE:	

FILE: P:\2004\040905 CANDLELIGHT\DWG\RULE 12 CANDLELIGHT - R.DWG - USER: JOHN NAGY - DATE: Monday, March 05, 2007 5:05:22 PM