

STATLER PLAT OF SURVEY

VOLUME 48 PAGES 86

30, 31, FRAC 32, AND FRAC 29

SECTION

FRAC 5

SECTION

6 N

TOWN

5 N

TOWN

6 E

RANGE

6 E

RANGE

WASHINGTON

TOWNSHIP

CONCORD

TOWNSHIP

MIAMI

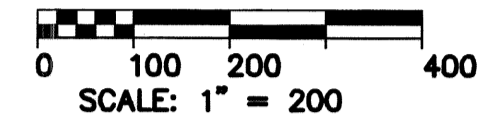
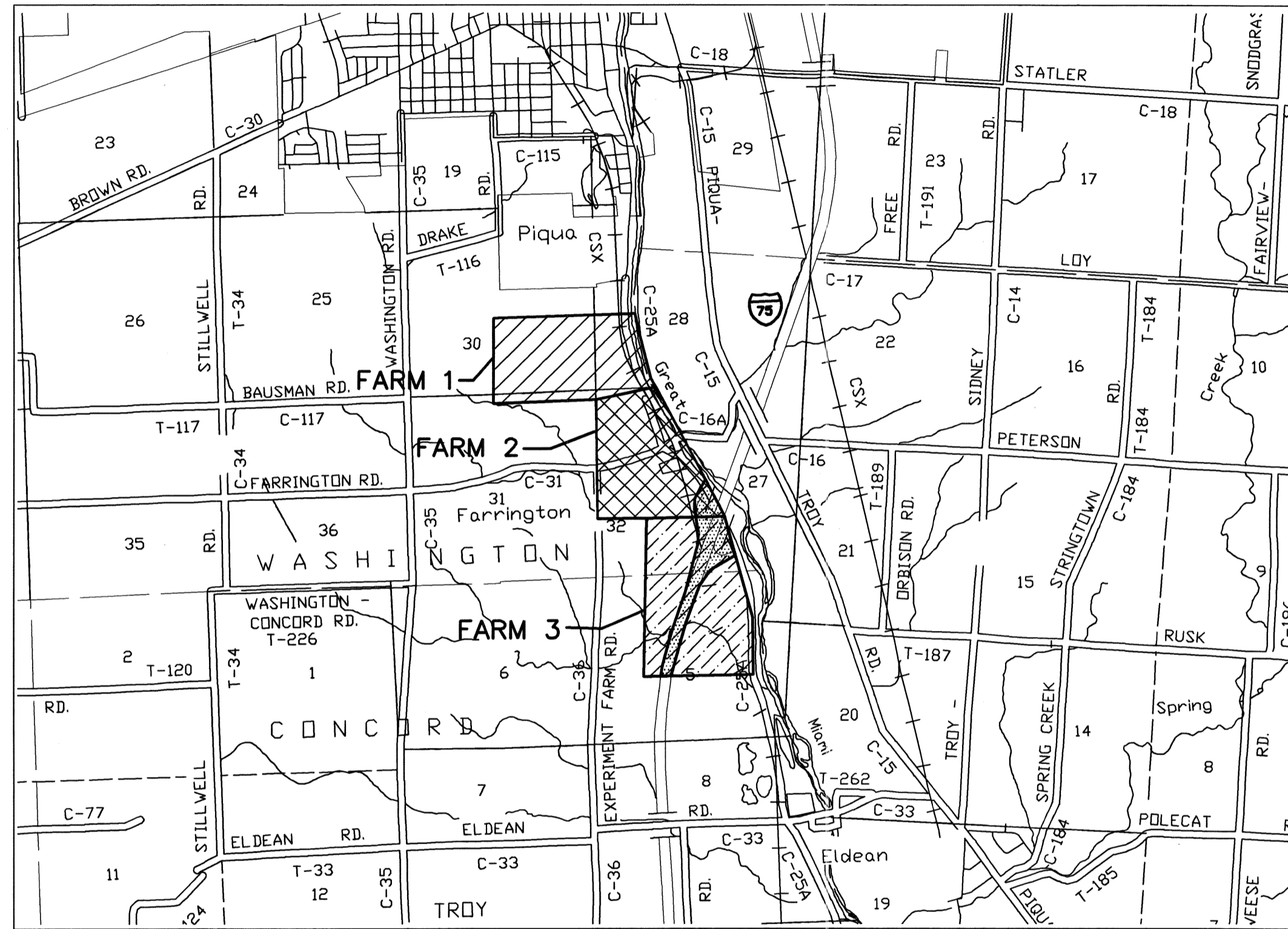
COUNTY

MIAMI

COUNTY

MIAMI COUNTY ENGINEER'S
RECORD OF LAND SURVEY

VICINITY MAP
NO SCALE



BASIS OF BEARING: ASSUMED

LEGEND

- 5/8"X30" CAPPED IRON PIN (SET)
STAMPED FBA
- MAG NAIL (SET)
- P.K. NAIL (FOUND)
- 5/8" IRON PIN (FOUND)
- ⊗ RAILROAD SPIKE (FOUND)
- ⊠ MON BOX (FOUND)
- ⬡ STONE (FOUND)
- ⊙ POST FENCE POST
- ⊙ CONC MON
- ▨ FLOOD PLAIN AS PER F.E.M.A MAPS
- ▤ LA RIGHT-OF-WAY I-75

SURVEY REFERENCES

DEED BOOKS

D.B. 35\35
D.B. 172\636
D.B. 254\222
D.B. 364\521-525
D.B. 435\269
D.B. 437\241
D.B. 437\244
D.B. 524\555
D.B. 524\558
D.B. 524\897
D.B. 538\606
D.B. 542\129
D.B. 543\282
D.B. 549\860
D.B. 551\402
D.B. 569\558
D.B. 574\13

LAND SURVEY

LND. 1\99
LND. 2\187
LND. 3\54
LND. 3\334
LND. 4\136
LND. 4\322
LND. 19\76
LND. 21\104
LND. 21\156
LND. 25\28
LND. 27\121
LND. 30\168
LND. 32\31
LND. 36\75
LND. 36\115
LND. 39\63
LND. 40\70
LND. 42\49
LND. 45\156

F.E.M.A.

ZONE A, A6 & C
COMMUNITY PANEL No. 390398 0020 B
COMMUNITY PANEL No. 390398 0040 B
COMMUNITY PANEL No. 390398 0060 B
COMMUNITY PANEL No. 390398 0076 B
DATED, JANUARY 19, 1983

RECORDED PLATS

REC. 12\79
REC. 12\125B
REC. 19\66

ROAD RECORD

REC. 8\34

NOTE:
AMBIGUITIES AND CONFLICTS OCCUR BETWEEN THE ORIGINAL 25A CENTERLINE PLAT (PV 12, PG 79), ANNEXATION PLAT (PV 19, PG 66) AND THE I-75 (PV 12, PG 125) CENTERLINE DRAWINGS. THE ALIGNMENT FOR THE CURRENT RIGHT-OF-WAYS AND CENTERLINE OF COUNTY ROAD 25-A SHOWN HEREON IS BASED UPON THE BEST FIT OF THOSE DRAWING WITH EXISTING MONUMENTS FOUND AND CONCURRENCE AMONG EXISTING RECORDED DOCUMENTS.

THE TOWNSHIP LINE (WASHINGTON\CONCORD) SHOWN HEREON IS BASED UPON LAND SURVEY VOLUME 30, PAGE 168 PERFORMED BY DAN TURNER AND A SURVEY PERFORMED BY J.H. ROUZER IN JANUARY 29, 1879. CONFLICTS AND AMBIGUITIES EXIST IN THE LOCATION OF THE TOWNSHIP LINE BASED UPON THE THE RIGHT OF WAY PLANS FOR I-75, THE RIGHT OF WAY PLANS FOR THE B&O RAILROAD (PIQUA AND TROY BRANCH), THE RIGHT OF WAY PLANS FOR COUNTY ROAD 25A, THE 1920 SURVEY OF THE MIAMI AND ERIE CANAL AND LAND SURVEY VOLUME 21, PAGE 156 BY MIKE COZATT. THIS WOULD APPEAR TO HAVE HAPPENED BY HOLDING THE SOUTH LINE OF THE 1879 SURVEY AS THE TOWNSHIP LINE. THE STATIONING OF THE TOWNSHIP LINE AS IT CROSSES THE CANAL, RAILROAD, C.R. 25A AND INTERSTATE ARE SHOWN BASED UPON THE ABOVE MENTIONED DOCUMENTS FOR CLARIFICATION PURPOSED ONLY.

THE SURVEY SHOWN HEREON WAS CREATED BASED UPON FIELD WORK AND CALCULATIONS PERFORMED OCTOBER 2002 TO JUNE 2003 BY MARK B. STUDEBAKER PS # 7074 AND MYSELF.

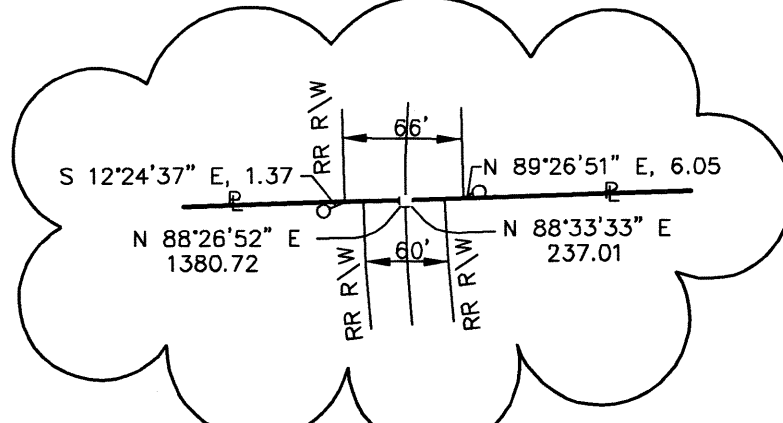
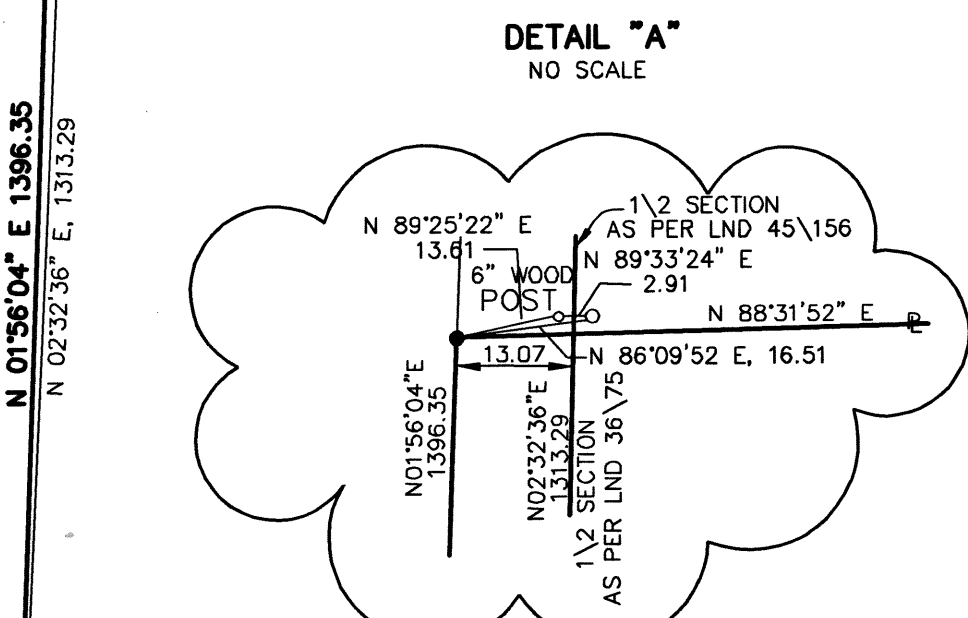
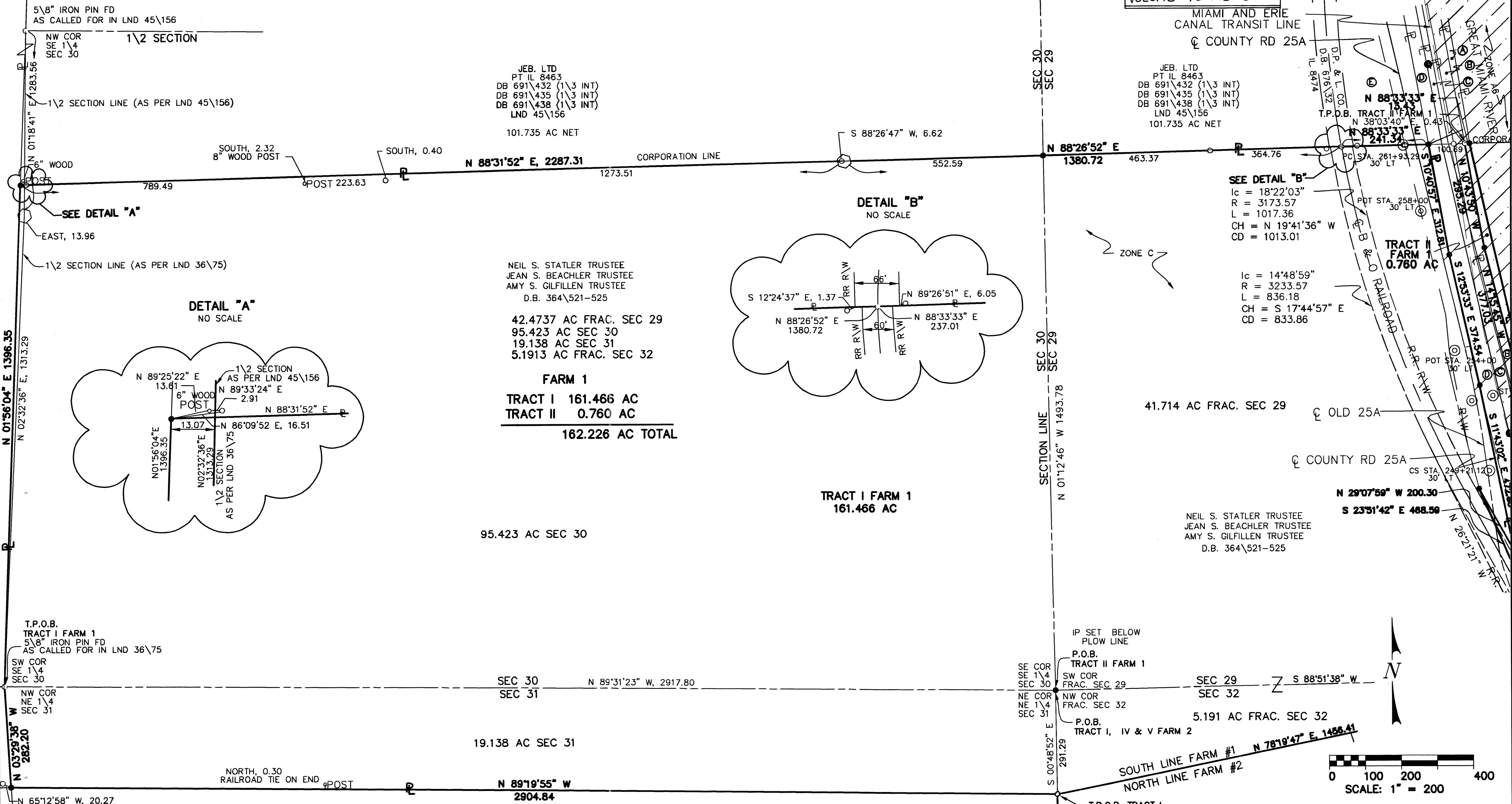
Christopher S. Harmon 7/16/04
CHRISTOPHER S. HARMON P.S. #7988 DATE



DRAWN BY JLS		CADD FILE PLAT		
JOB NO. 5100-01		DATE 6/3/03		
NO.	REVISION DATA	DATE	BY	APP'D

FLOYD BROWNE ASSOCIATES, FBA INC. * Contact Office
Sidney, Ohio 937.492.7836

Marion, Ohio 740.383.2187 Dayton, Ohio 937.431.1004 Delaware, Ohio 740.363.6792



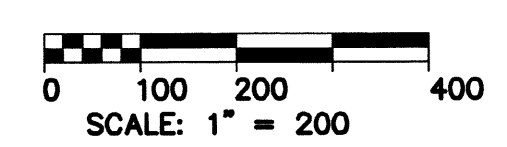
NEIL S. STATLER TRUSTEE
 JEAN S. BEACHLER TRUSTEE
 AMY S. GILFILLIN TRUSTEE
 D.B. 364\521-525

42.4737 AC FRAC. SEC 29
 95.423 AC SEC 30
 19.138 AC SEC 31
 5.1913 AC FRAC. SEC 32

FARM 1
TRACT I 161.466 AC
TRACT II 0.760 AC
162.226 AC TOTAL

SEE DETAIL "B"
 Ic = 18°22'03"
 R = 3173.57
 L = 1017.36
 CH = N 19°41'36" W
 CD = 1013.01

Ic = 14°48'59"
 R = 3233.57
 L = 836.18
 CH = S 17°44'57" E
 CD = 833.86



LEGEND

- 5/8"x30" CAPPED IRON PIN (SET)
- STAMPED FBA
- ⊗ MAG NAIL (SET)
- P.K. NAIL (FOUND)
- 5/8" IRON PIN (FOUND)
- ⊗ RAILROAD SPIKE (FOUND)
- MON BOX (FOUND)
- STONE (FOUND)
- ⊗ FENCE POST
- CONC MON (FOUND)
- ▨ FLOOD PLAIN AS PER F.E.M.A MAPS
- LA RIGHT-OF-WAY I-75

ADJOINING OWNERS

<p>A W. & M. STEWART D.B. 732\307 0.147 AC (LOT 8471)</p> <p>B MIAMI CONSERVANCY DISTRICT D.B. 435\269 1.630 AC (LOT 8472) 4.774 AC (NET, TOTAL)</p> <p>C MIAMI COUNTY BOARD OF COMMISSIONERS D.B. 524\897 0.390 AC (LOT 8475) 2.494 AC</p> <p>D MIAMI COUNTY BOARD OF COMMISSIONERS D.B. 437\241 0.869 AC (LOT 8473) 8.637 AC (NET, TOTAL)</p>	<p>E W. & M. STEWART D.B. 732\307 1.363 AC (LOT 8470)</p> <p>F MIAMI COUNTY BOARD OF COMMISSIONERS D.B. 549\860 1.050 AC (TOTAL)</p> <p>G MIAMI COUNTY BOARD OF COMMISSIONERS D.B. 437\241 0.869 AC (LOT 8473) 8.637 AC (NET, TOTAL)</p> <p>H MIAMI COUNTY BOARD OF COMMISSIONERS D.B. 524\895 1.200 AC</p> <p>I MIAMI COUNTY BOARD OF COMMISSIONERS D.B. 549\860 0.120 AC</p>
---	---

REFERENCE MONUMENTS 25A

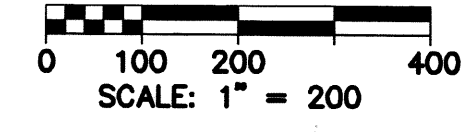
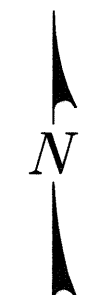
STATIONING	AS LOCATED	REF TO PL FROM LOCATED MON.
1. CS 159+59.38, 35' RT	_____	39.21' LT
30' LT	_____	25.76' RT
2. ST 161+59.38, 30' LT	_____	63.87' RT
3. ST 225+51.56, 42.65 LT	_____	75.32' LT
4. PC 227+46.03, 42.65' LT	_____	53.28' RT
30' RT	_____	71.05' RT
5. PT 233+84.00, 30' RT	S 86°12'26" W, 0.29'	52.14' LT, 38.40' RT
6. TS 241+01.15, 30' RT	S 58°51'13" W, 0.78'	75.70' LT, 42.15' RT
7. SC 243+01.15, 30' LT	N 85°03'08" W, 1.15'	10.10' LT
30' RT	S 27°33'01" W, 1.42'	41.17' RT
8. CS 249+21.12, 30' LT	S 21°06'51" E, 1.52'	21.84' RT
9. ST 251+21.12, 30' LT	S 33°14'56" E, 0.86'	30.1497' RT
30' RT	S 33°02'25" E, 0.96'	29.86' LT
10. POT 254+00.00, 30' LT	S 28°32'09" E, 1.51'	46.14' RT
11. POT 258+00.00, 30' LT	S 34°15'15" E, 1.36'	55.14' RT

K. SCHAURER
 D.B. 642\568
 D.B. 669\421
 LND. 25\28

FLOYD BROWNE ASSOCIATES, FBA INC.

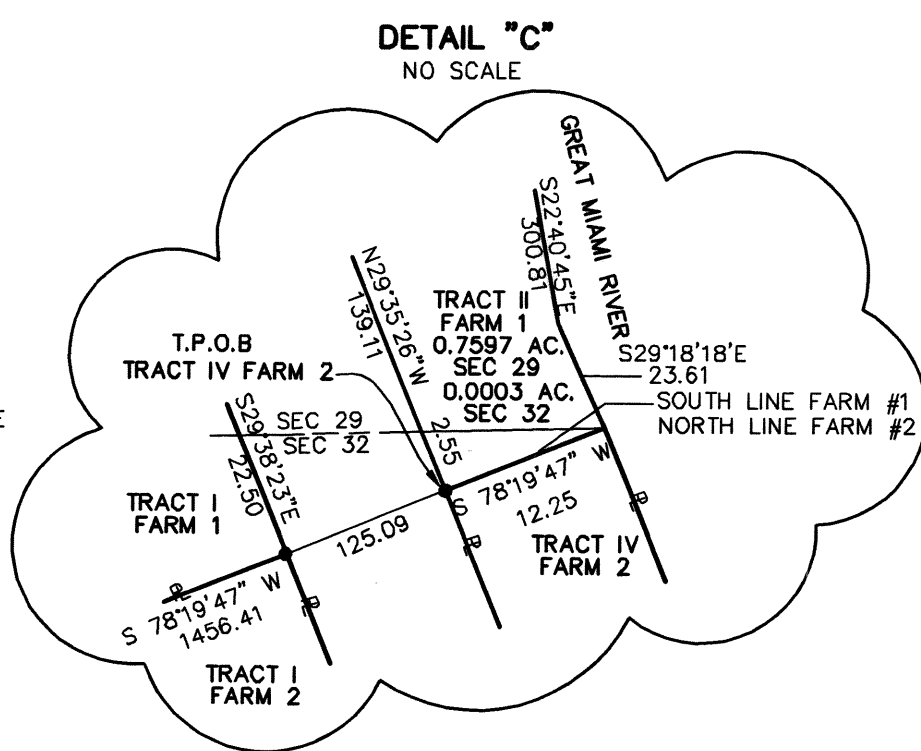
* Contact Office
 Sidney, Ohio
 937.492.7638

Marion, Ohio 740.383.2187 Dayton, Ohio 937.431.1004 Delaware, Ohio 740.363.6792



LEGEND

- 5/8"x30" CAPPED IRON PIN (SET)
- MAG NAIL (SET)
- P.K. NAIL (FOUND)
- 5/8" IRON PIN (FOUND)
- ⊗ RAILROAD SPIKE (FOUND)
- ⊠ MON BOX (FOUND)
- ⊙ STONE (FOUND)
- ⊙ POST FENCE POST
- ⊙ CONC MON (FOUND)
- ▨ FLOOD PLAIN AS PER F.E.M.A MAPS
- ▨ LA RIGHT-OF-WAY I-75



ADJOINING OWNERS

- Ⓐ W. & M. STEWART
D.B. 732\307
0.147 AC
(LOT 8471)
- Ⓑ MIAMI CONSERVANCY DISTRICT
D.B. 435\269
1.630 AC (LOT 8472)
4.774 AC (NET, TOTAL)
- Ⓒ MIAMI COUNTY BOARD OF COMMISSIONERS
D.B. 524\897
0.390 AC (LOT 8475)
2.494 AC
- Ⓓ MIAMI COUNTY BOARD OF COMMISSIONERS
D.B. 437\241
0.869 AC (LOT 8473)
8.637 AC (NET, TOTAL)
- Ⓔ W. & M. STEWART
D.B. 732\307
1.363 AC
(LOT 8470)
- Ⓕ MIAMI COUNTY BOARD OF COMMISSIONERS
D.B. 549\860
1.050 AC (TOTAL)
- Ⓖ MIAMI COUNTY BOARD OF COMMISSIONERS
D.B. 437\241
0.869 AC (LOT 8473)
8.637 AC (NET, TOTAL)
- Ⓗ MIAMI COUNTY BOARD OF COMMISSIONERS
D.B. 524\895
1.200 AC
- Ⓙ MIAMI COUNTY BOARD OF COMMISSIONERS
D.B. 549\860
0.120 AC

REFERENCE MONUMENTS 25A

STATIONING	AS LOCATED	REF TO PL FROM LOCATED MON.
1. CS 159+59.38, 35' RT	_____	39.21' LT
30' LT	_____	25.76' RT
2. ST 161+59.38, 30' LT	_____	63.87' RT
3. ST 225+51.56, 42.65 LT	_____	75.32' LT
4. PC 227+46.03, 42.65' LT	_____	53.28' RT
30' RT	_____	71.05' RT
5. PT 233+84.00, 30' RT	S 86°12'26" W, 0.29'	52.14' LT, 38.40' RT
6. TS 241+01.15, 30' RT	S 58°51'13" W, 0.78'	75.70' LT, 42.15' RT
7. SC 243+01.15, 30' LT	N 85°03'08" W, 1.15'	10.10' LT
30' RT	S 27°33'01" W, 1.42'	41.17' RT
8. CS 249+21.12, 30' LT	S 21°06'51" E, 1.52'	21.84' RT
9. ST 251+21.12, 30' LT	S 33°14'56" E, 0.86'	30.1497' RT
30' RT	S 33°02'25" E, 0.96'	29.86' LT
10. POT 254+00.00, 30' LT	S 28°32'09" E, 1.51'	46.14' RT
11. POT 258+00.00, 30' LT	S 34°15'15" E, 1.36'	55.14' RT

TRACT I FARM 2

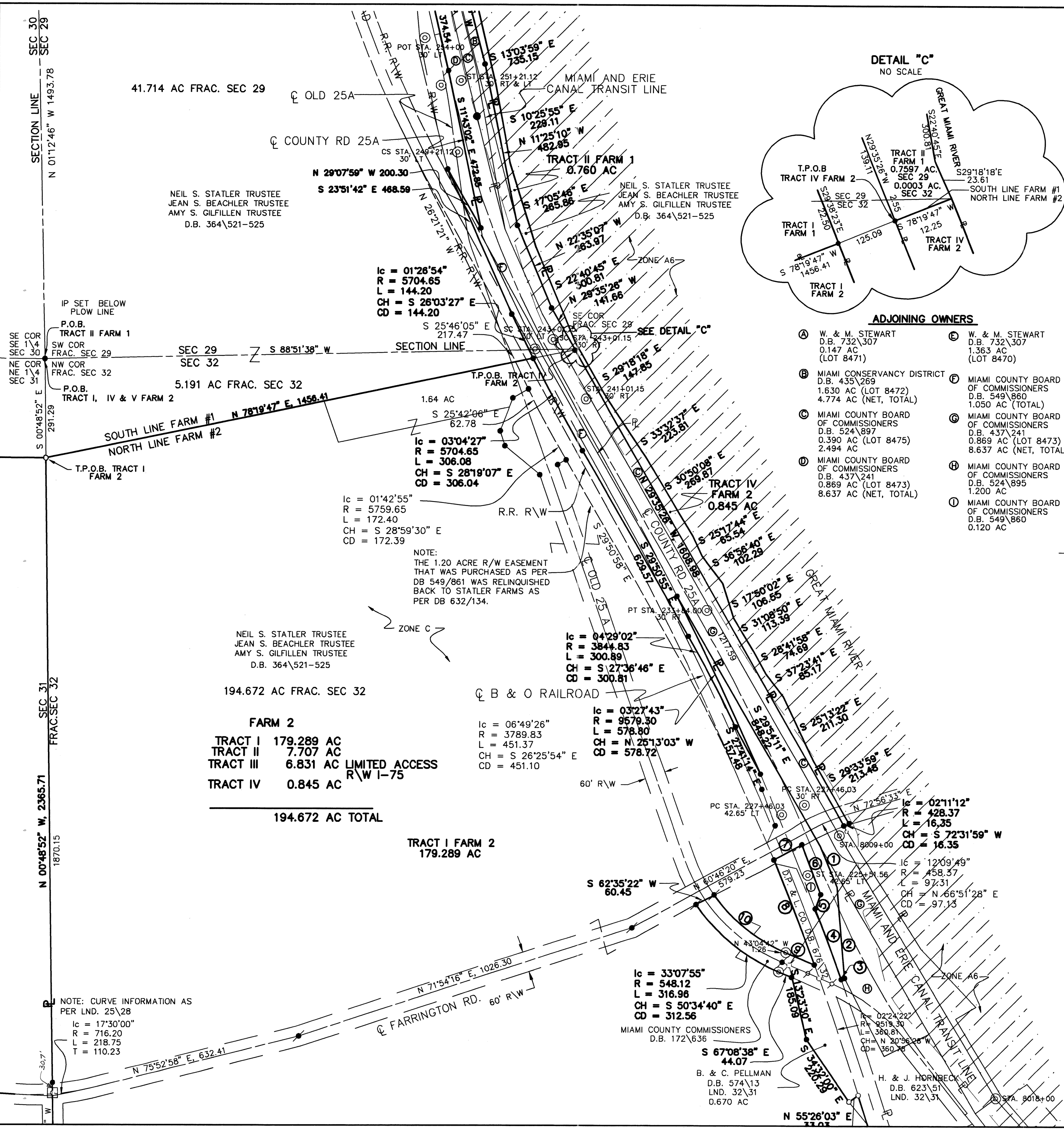
- ① S 22°19'50" E, 131.78
- ② S 04°46'00" E, 270.00
- ③ S 70°35'37" W, 10.18
- ④ lc = 01°19'50"
R = 9579.30
L = 222.46
CH = N 20°15'14" W
CD = 222.45
- ⑤ N 20°44'19" E, 44.85
- ⑥ N 20°34'43" W, 158.35
- ⑦ S 60°46'22" W, 93.40
- ⑧ lc = 02°00'32"
R = 9519.30
L = 333.76
CH = S 20°59'18" E
CD = 333.75
- ⑨ N 67°08'38" W, 90.06
- ⑩ lc = 32°18'59"
R = 488.12
L = 275.31
CH = N 50°59'09" W
CD = 271.68

2 OF 5

FLOYD BROWNE ASSOCIATES, FBA INC.

* Contact Office
Sidney, Ohio
937.492.7636

Marion, Ohio 740.383.2187
Dayton, Ohio 937.431.1004
Delaware, Ohio 740.363.6792



NOTE: CURVE INFORMATION AS PER LND. 25\28

lc = 17°30'00"
R = 716.20
L = 218.75
T = 110.23

FARM 2

TRACT I 179.289 AC
TRACT II 7.707 AC
TRACT III 6.831 AC LIMITED ACCESS R/W I-75
TRACT IV 0.845 AC

194.672 AC TOTAL

TRACT I FARM 2
179.289 AC

lc = 06°49'26"
R = 3789.83
L = 451.37
CH = S 26°25'54" E
CD = 451.10

lc = 03°27'43"
R = 9579.30
L = 578.80
CH = N 25°13'03" W
CD = 578.72

lc = 04°29'02"
R = 3844.83
L = 300.89
CH = S 27°36'46" E
CD = 300.81

lc = 33°07'55"
R = 548.12
L = 316.96
CH = S 50°34'40" E
CD = 312.56

MIAMI COUNTY COMMISSIONERS
D.B. 172\636

S 67°08'38" E
44.07

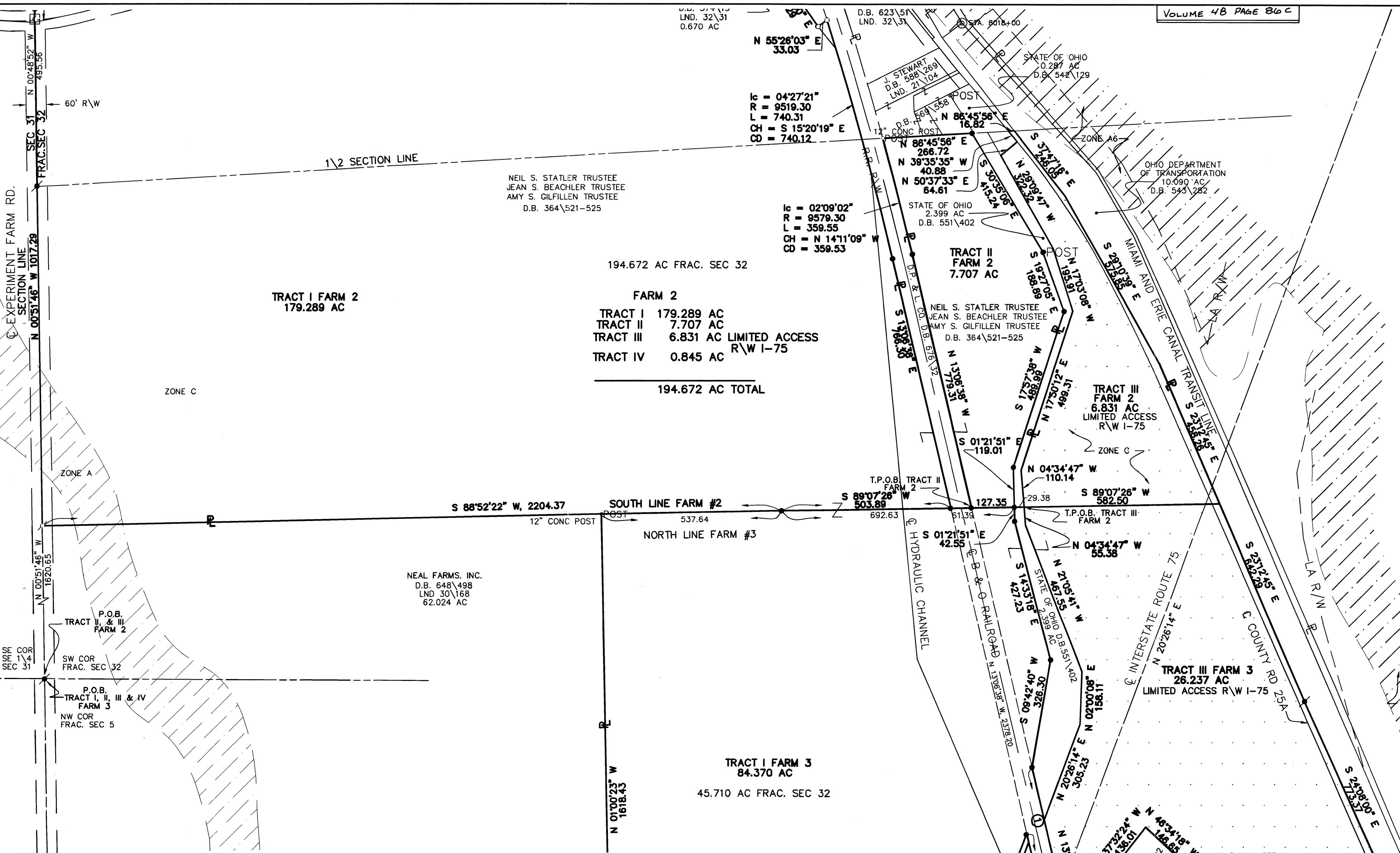
B. & C. PELLMAN
D.B. 574\13
LND. 32\31
0.670 AC

lc = 02°11'12"
R = 428.37
L = 16.35
CH = S 72°31'59" W
CD = 16.35

lc = 12°09'49"
R = 458.37
L = 97.31
CH = N 66°51'28" E
CD = 97.13

lc = 02°24'22"
R = 9519.30
L = 380.81
CH = N 20°56'26" W
CD = 360.78

H. & J. HORNBECK
D.B. 623\51
LND. 32\31



REFERENCE MONUMENTS 25A

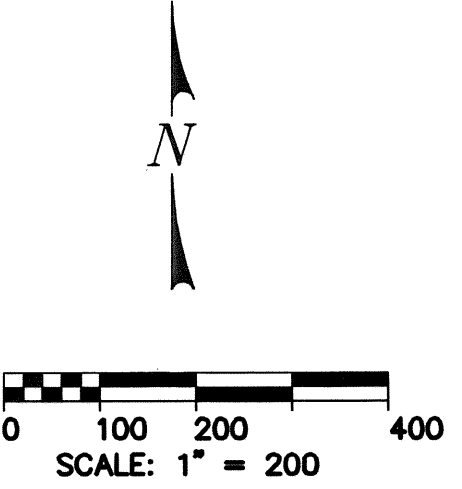
STATIONING	AS LOCATED	REF TO PL FROM LOCATED MON.
1. CS 159+59.38, 35' RT	_____	39.21' RT
2. ST 161+59.38, 30' LT	_____	25.76' LT
3. ST 225+51.56, 42.65 LT	_____	63.87' RT
4. PC 227+46.03, 42.65' LT	_____	75.32' LT
5. PT 233+84.00, 30' RT	_____	53.28' RT
6. TS 241+01.15, 30' RT	_____	71.05' RT
7. SC 243+01.15, 30' LT	S 86°12'26" W, 0.29'	52.14' LT, 38.40' RT
8. CS 249+21.12, 30' RT	S 58°51'13" W, 0.78'	75.70' LT, 42.15' RT
9. ST 251+21.12, 30' LT	N 85°03'08" W, 1.15'	10.10' LT
30' RT	S 27°33'01" W, 1.42'	41.17' RT
10. POT 254+00.00, 30' LT	S 21°06'51" E, 1.52'	21.84' RT
30' RT	S 33°14'56" E, 0.86'	30.1497' RT
	S 33°02'25" E, 0.96'	29.86' LT
11. POT 258+00.00, 30' LT	S 28°32'09" E, 1.51'	46.14' RT
	S 34°15'15" E, 1.36'	55.14' RT

ADJOINING OWNERS

(A) W. & M. STEWART D.B. 732\307 0.147 AC (LOT 8471)	(E) W. & M. STEWART D.B. 732\307 1.363 AC (LOT 8470)
(B) MIAMI CONSERVANCY DISTRICT D.B. 435\269 1.630 AC (LOT 8472) 4.774 AC (NET, TOTAL)	(F) MIAMI COUNTY BOARD OF COMMISSIONERS D.B. 549\860 1.050 AC (TOTAL)
(C) MIAMI COUNTY BOARD OF COMMISSIONERS D.B. 524\897 0.390 AC (LOT 8475) 2.494 AC	(G) MIAMI COUNTY BOARD OF COMMISSIONERS D.B. 437\241 0.869 AC (LOT 8473) 8.637 AC (NET, TOTAL)
(D) MIAMI COUNTY BOARD OF COMMISSIONERS D.B. 437\241 0.869 AC (LOT 8473) 8.637 AC (NET, TOTAL)	(H) MIAMI COUNTY BOARD OF COMMISSIONERS D.B. 524\895 1.200 AC
	(I) MIAMI COUNTY BOARD OF COMMISSIONERS D.B. 549\860 0.120 AC

- LEGEND**
- 5/8"x30" CAPPED IRON PIN (SET)
 - STAMPED FBA
 - ⊙ MAG NAIL (SET)
 - ⊙ P.K. NAIL (FOUND)
 - 5/8" IRON PIN (FOUND)
 - ⊙ RAILROAD SPIKE (FOUND)
 - ⊙ MON BOX (FOUND)
 - ⊙ STONE (FOUND)
 - ⊙ FENCE POST
 - ⊙ CONC MON (FOUND)
 - ▨ FLOOD PLAIN AS PER F.E.M.A MAPS
 - ▨ LA RIGHT-OF-WAY I-75

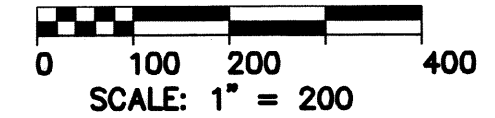
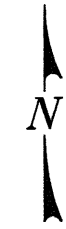
- TRACT I FARM 3**
- ① S 13°06'38" E, 378.68
 - ② S 20°26'14" W, 108.57
 - ③ N 13°06'38" W, 280.48



FLOYD BROWNE ASSOCIATES, FBA INC.

* Contact Office
 Sidney, Ohio
 937.492.7636

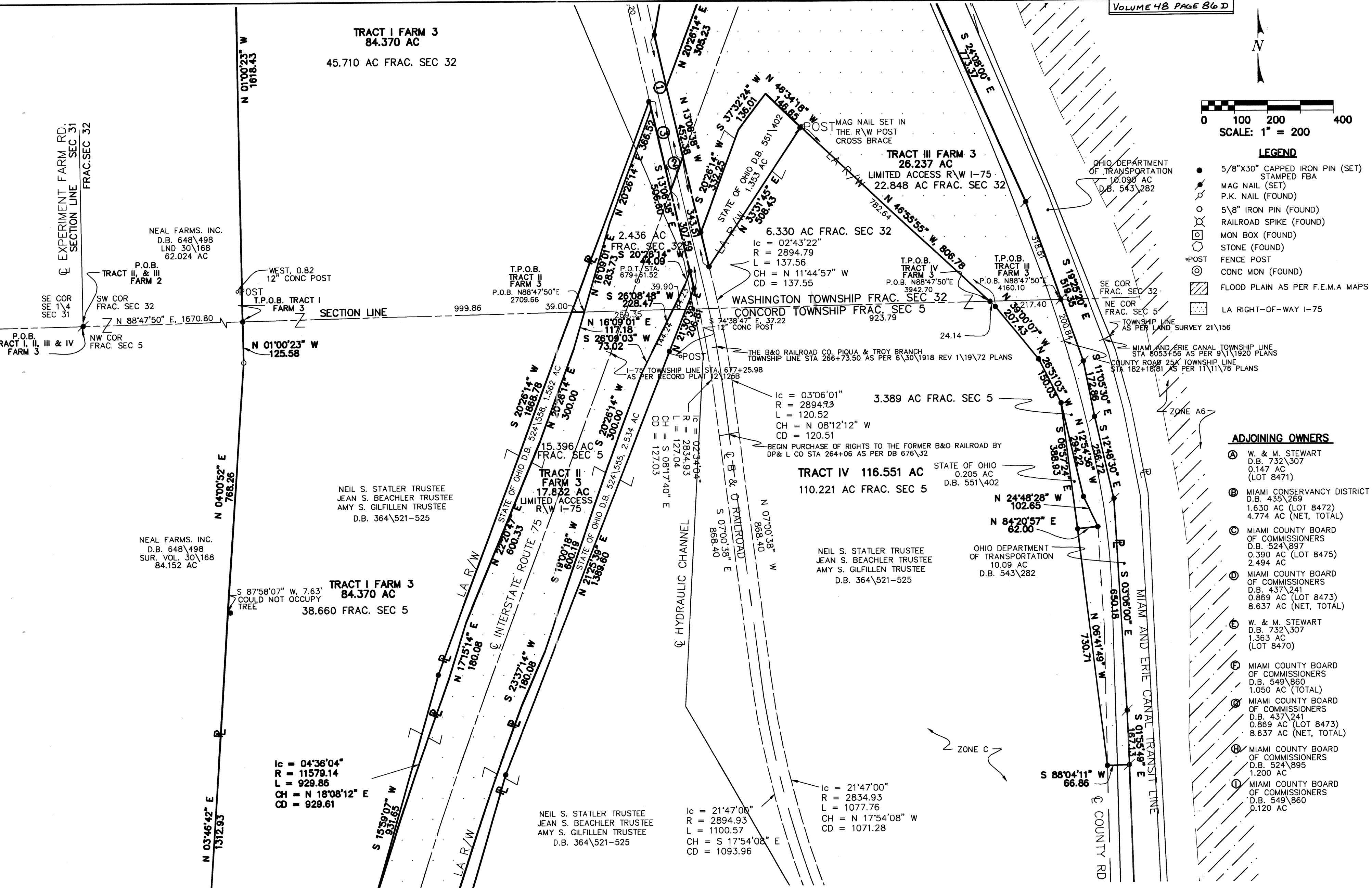
Marion, Ohio 740.383.2187 | Dayton, Ohio 937.431.1004 | Delaware, Ohio 740.363.6792



- LEGEND**
- 5/8" X 30" CAPPED IRON PIN (SET)
 - STAMPED FBA
 - MAG NAIL (SET)
 - P.K. NAIL (FOUND)
 - 5/8" IRON PIN (FOUND)
 - RAILROAD SPIKE (FOUND)
 - MON BOX (FOUND)
 - STONE (FOUND)
 - POST
 - FENCE POST
 - CONC MON (FOUND)
 - ▨ FLOOD PLAIN AS PER F.E.M.A MAPS
 - ▨ LA RIGHT-OF-WAY I-75

ADJOINING OWNERS

- Ⓐ W. & M. STEWART
D.B. 732\307
0.147 AC
(LOT 8471)
- Ⓑ MIAMI CONSERVANCY DISTRICT
D.B. 435\269
1.630 AC (LOT 8472)
4.774 AC (NET, TOTAL)
- Ⓒ MIAMI COUNTY BOARD OF COMMISSIONERS
D.B. 524\897
0.390 AC (LOT 8475)
2.494 AC
- Ⓓ MIAMI COUNTY BOARD OF COMMISSIONERS
D.B. 437\241
0.869 AC (LOT 8473)
8.637 AC (NET, TOTAL)
- Ⓔ W. & M. STEWART
D.B. 732\307
1.363 AC
(LOT 8470)
- Ⓕ MIAMI COUNTY BOARD OF COMMISSIONERS
D.B. 549\860
1.050 AC (TOTAL)
- Ⓖ MIAMI COUNTY BOARD OF COMMISSIONERS
D.B. 437\241
0.869 AC (LOT 8473)
8.637 AC (NET, TOTAL)
- Ⓗ MIAMI COUNTY BOARD OF COMMISSIONERS
D.B. 524\895
1.200 AC
- Ⓘ MIAMI COUNTY BOARD OF COMMISSIONERS
D.B. 549\860
0.120 AC



REFERENCE MONUMENTS 25A

STATIONING	AS LOCATED	REF TO PL FROM LOCATED MON.
1. CS 159+59.38, 35' RT	_____	39.21' LT
30' LT	_____	25.76' RT
2. ST 161+59.38, 30' LT	_____	63.87' RT
3. ST 225+51.56, 42.65 LT	_____	75.32' LT
4. PC 227+46.03, 42.65' LT	_____	53.28' RT
30' RT	_____	71.05' RT
5. PT 233+84.00, 30' RT	S 86°12'26" W, 0.29'	52.14' LT, 38.40' RT
6. TS 241+01.15, 30' RT	S 58°51'13" W, 0.78'	75.70' LT, 42.15' RT
7. SC 243+01.15, 30' LT	N 85°03'08" W, 1.15'	10.10' LT
30' RT	S 27°33'01" W, 1.42'	41.17' RT

REFERENCE MONUMENTS 25A

STATIONING	AS LOCATED	REF TO PL FROM LOCATED MON.
8. CS 249+21.12, 30' LT	S 21°06'51" E, 1.52'	21.84' RT
9. ST 251+21.12, 30' LT	S 33°14'56" E, 0.86'	30.1497' RT
30' RT	S 33°02'25" E, 0.96'	29.86' LT
10. POT 254+00.00, 30' LT	S 28°32'09" E, 1.51'	46.14' RT
11. POT 258+00.00, 30' LT	S 34°15'15" E, 1.36'	55.14' RT

TRACT I FARM 3

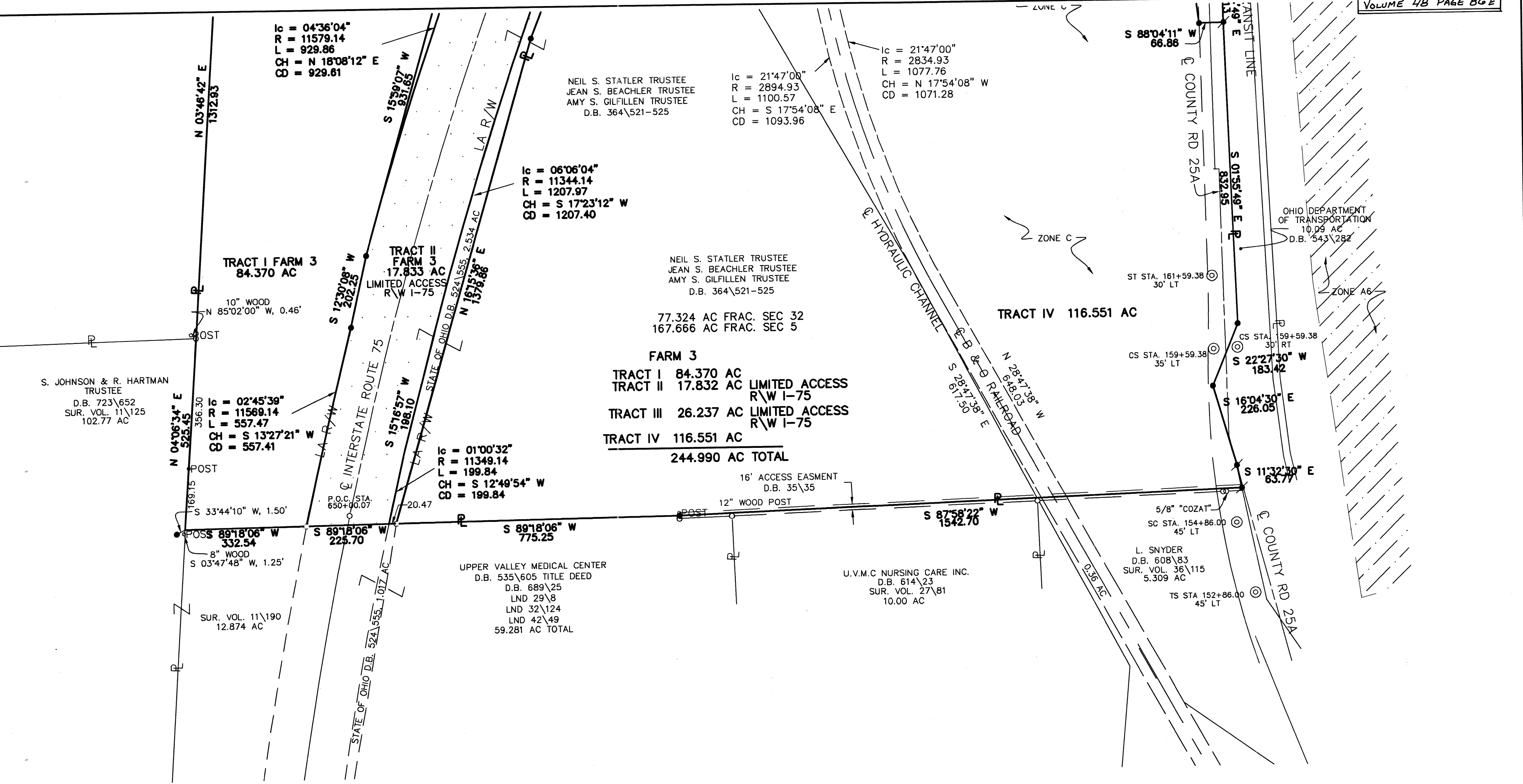
- ① S 13°06'38" E, 378.68
- ② S 20°26'14" W, 108.57
- ③ N 13°06'38" W, 280.48

4 OF 5

FLOYD BROWNE ASSOCIATES, FBA INC

* Contact Office
Sidney, Ohio
937.492.7638

Marion, Ohio 740.363.2187 Dayton, Ohio 937.431.1004 Delaware, Ohio 740.363.6792



S. JOHNSON & R. HARTMAN TRUSTEE
D.B. 723\652
SUR. VOL. 11\125
102.77 AC

TRACT I FARM 3
84.370 AC

TRACT II FARM 3
17.833 AC
LIMITED ACCESS
R\W I-75

FARM 3
TRACT I 84.370 AC
TRACT II 17.832 AC LIMITED ACCESS
TRACT III 26.237 AC LIMITED ACCESS
TRACT IV 116.551 AC
244.990 AC TOTAL

NEIL S. STATLER TRUSTEE
JEAN S. BEACHLER TRUSTEE
AMY S. GILFILLAN TRUSTEE
D.B. 364\521-525

77.324 AC FRAC. SEC 32
167.666 AC FRAC. SEC 5

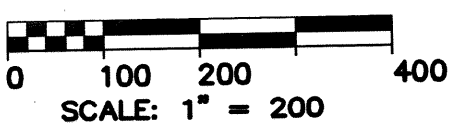
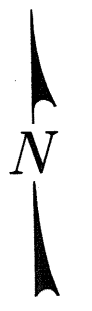
TRACT IV 116.551 AC

UPPER VALLEY MEDICAL CENTER
D.B. 535\605 TITLE DEED
D.B. 689\25
LND 29\8
LND 32\124
LND 42\49
59.281 AC TOTAL

U.V.M.C NURSING CARE INC.
D.B. 614\23
SUR. VOL. 27\81
10.00 AC

L. SNYDER
D.B. 608\83
SUR. VOL. 36\115
5.309 AC

OHIO DEPARTMENT OF TRANSPORTATION
10.09 AC
D.B. 543\282



LEGEND

- 5/8"x30" CAPPED IRON PIN (SET)
- MAG NAIL (SET)
- P.K. NAIL (FOUND)
- 5/8" IRON PIN (FOUND)
- RAILROAD SPIKE (FOUND)
- MON BOX (FOUND)
- STONE (FOUND)
- FENCE POST
- CONC MON (FOUND)
- ▨ FLOOD PLAIN AS PER F.E.M.A MAPS
- ▨ LA RIGHT-OF-WAY I-75

ADJOINING OWNERS

- | | |
|---|--|
| <p>(A) W. & M. STEWART
D.B. 732\307
0.147 AC
(LOT 8471)</p> <p>(B) MIAMI CONSERVANCY DISTRICT
D.B. 435\269
1.630 AC (LOT 8472)
4.774 AC (NET, TOTAL)</p> <p>(C) MIAMI COUNTY BOARD OF COMMISSIONERS
D.B. 524\897
0.390 AC (LOT 8475)
2.494 AC</p> <p>(D) MIAMI COUNTY BOARD OF COMMISSIONERS
D.B. 437\241
0.869 AC (LOT 8473)
8.637 AC (NET, TOTAL)</p> | <p>(E) W. & M. STEWART
D.B. 732\307
1.363 AC
(LOT 8470)</p> <p>(F) MIAMI COUNTY BOARD OF COMMISSIONERS
D.B. 549\860
1.050 AC (TOTAL)</p> <p>(G) MIAMI COUNTY BOARD OF COMMISSIONERS
D.B. 437\241
0.869 AC (LOT 8473)
8.637 AC (NET, TOTAL)</p> <p>(H) MIAMI COUNTY BOARD OF COMMISSIONERS
D.B. 524\895
1.200 AC</p> <p>(I) MIAMI COUNTY BOARD OF COMMISSIONERS
D.B. 549\860
0.120 AC</p> |
|---|--|

REFERENCE MONUMENTS 25A

STATIONING	AS LOCATED	REF TO PL FROM LOCATED MON.
1. CS 159+59.38, 35' RT		39.21' LT
30' LT		25.76' RT
2. ST 161+59.38, 30' LT		63.87' RT
3. ST 225+51.56, 42.65' LT		75.32' LT
4. PC 227+46.03, 42.65' LT		53.28' RT
30' RT		71.05' RT
5. PT 233+84.00, 30' RT	S 86°12'26" W, 0.29'	52.14' LT, 38.40' RT
6. TS 241+01.15, 30' RT	S 58°51'13" W, 0.78'	75.70' LT, 42.15' RT
7. SC 243+01.15, 30' LT	N 85°03'08" W, 1.15'	10.10' LT
30' RT	S 27°33'01" W, 1.42'	41.17' RT
8. CS 249+21.12, 30' LT	S 21°06'51" E, 1.52'	21.84' RT
9. ST 251+21.12, 30' LT	S 33°14'56" E, 0.86'	30.1497' RT
30' RT	S 33°02'25" E, 0.96'	29.86' LT
10. POT 254+00.00, 30' LT	S 28°32'09" E, 1.51'	46.14' RT
11. POT 258+00.00, 30' LT	S 34°15'15" E, 1.36'	55.14' RT

FLOYD BROWNE ASSOCIATES, FBA INC.

* Contact Office
Sidney, Ohio
937.492.7636

Marion, Ohio 740.383.2187 Dayton, Ohio 937.431.1004 Delaware, Ohio 740.363.6792