



LOCATED JUST SOUTH OF DOWLING STREET IN KENDALLVILLE AND JUST WEST OF ALLEN CHAPEL ROAD

# LISTING

**20.38± Acres**  
**Kendallville, Indiana**



**Sale Price \$139,000**

- Approximately 6 acres zoned R-1 access from Dowling Street
- Approximately 14 acres zoned C-2A access from Allen Chapel Road
- Approximately 10 acres tillable
- Access to property from Dowling Street and Allen Chapel Road
- Taxes - \$573.00 per year
- City utilities available
- This property has a lot of potential. Location is ideal for many developmental options.



*The information on this sheet is subject to verification and no liability for errors or omissions is assumed by the Schrader Agency.*

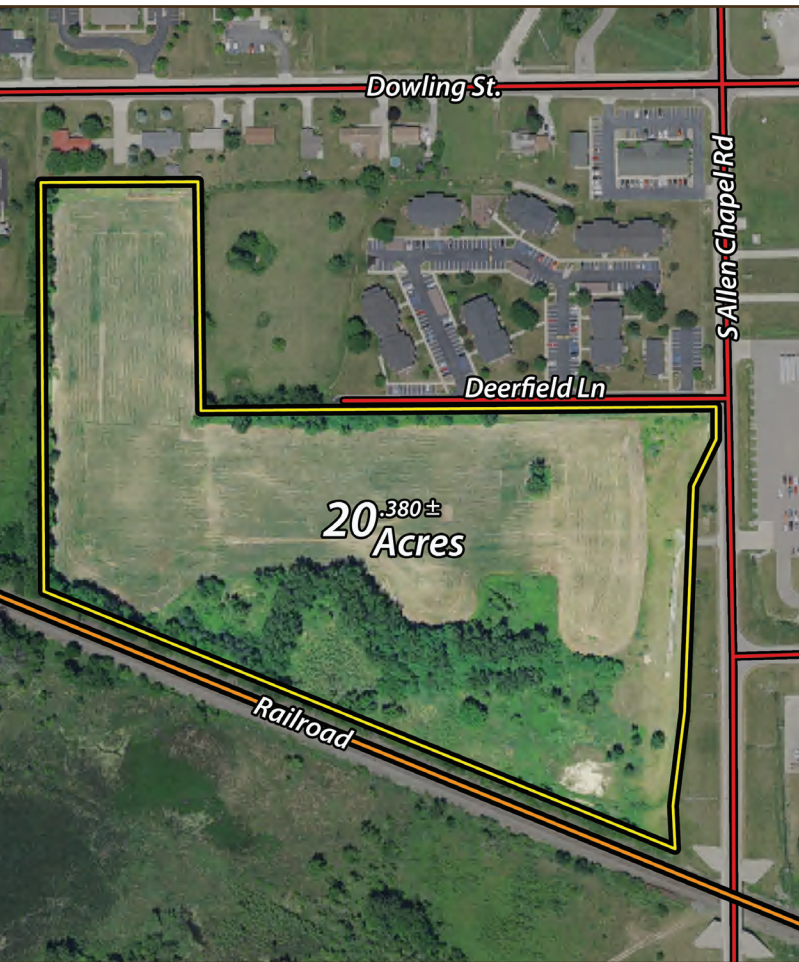
*Osborn • DR26N*



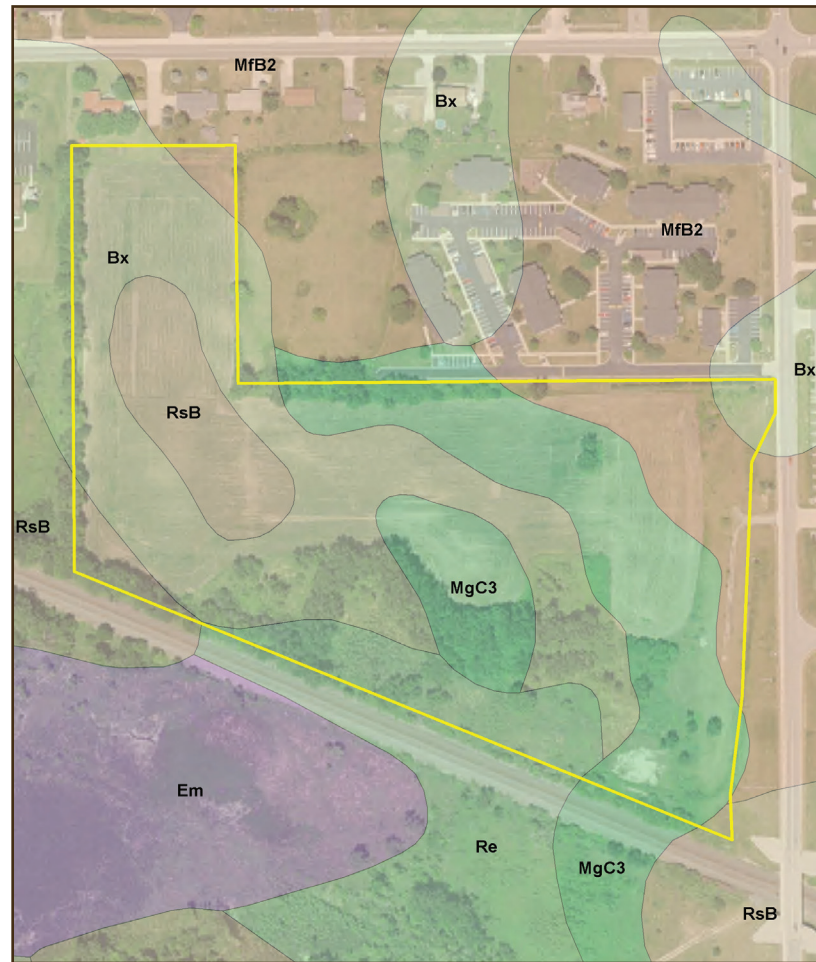
# LISTING **20.38± Acres** **Kendallville, Indiana**

**Sale Price \$139,000**

AERIAL MAP



SOIL MAP



The information on this sheet is subject to verification and no liability for errors or omissions is assumed by the Schrader Agency.

Osborn • DR26N