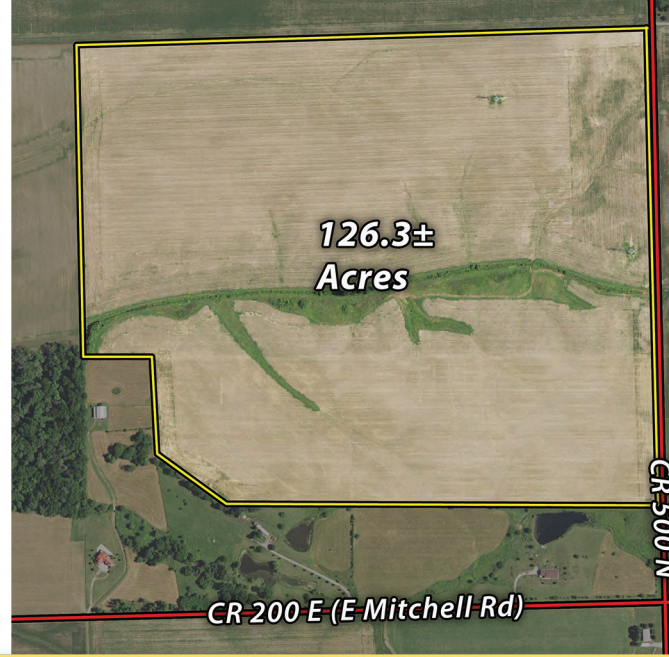


# REAL ESTATE

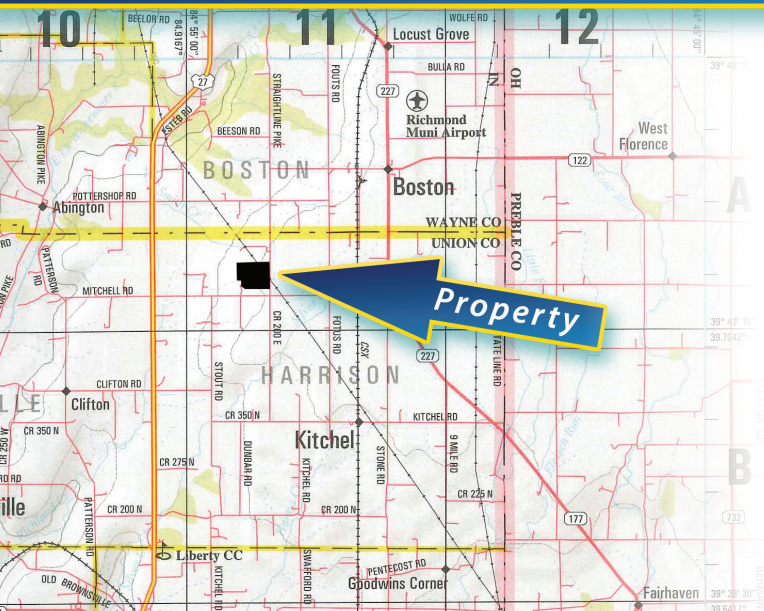
# Listing

## PROPERTY FOR SALE

**Top Ag Area: Northwest Union County. One mile from Ohio Line. 6 Miles South of Richmond.**



**Owners: Greenmeadow Farms, Inc.**



**Total Acres:  
126.3±  
ACRES**



**Price:  
\$800,000 (\$6,324/  
ACRE)**

**Cropland Subject to 2019 Crop Rights. Closing Fall 2019.**

### TRACT 1 DETAILS:

- 119+ acres Cropland – 94% of Total Acres
- 6.3+ acres Non-Tillable
- APH Corn 191 bu. and Beans 57 bu.
- Taxes \$2,700.52/yr. or \$21.38/acre
- Corn Soil Index 146.8 bu.

**Don't miss this one!**

### LOCATION:

2 miles southwest of Boston or 5 ½ miles northeast of Liberty. From Boston west on Hwy. 122 to Straightline Pike then south to property on the west side.



*The information on this sheet is subject to verification and no liability for errors or omissions is assumed by the Schrader Agency.*

*Greenmeadow Farms 2 • SS60U*

**75<sup>th</sup> ANNIVERSARY**  
Since 1944 **SCHRADER**

**800.451.2709**  
[schraderauction.com/listings](http://schraderauction.com/listings)

**Listing Agent: STEVE SLONAKER**  
**877-747-0212 • [schrder@parallax.ws](mailto:schrder@parallax.ws)**

# REAL ESTATE

# Listing

# PROPERTY FOR SALE



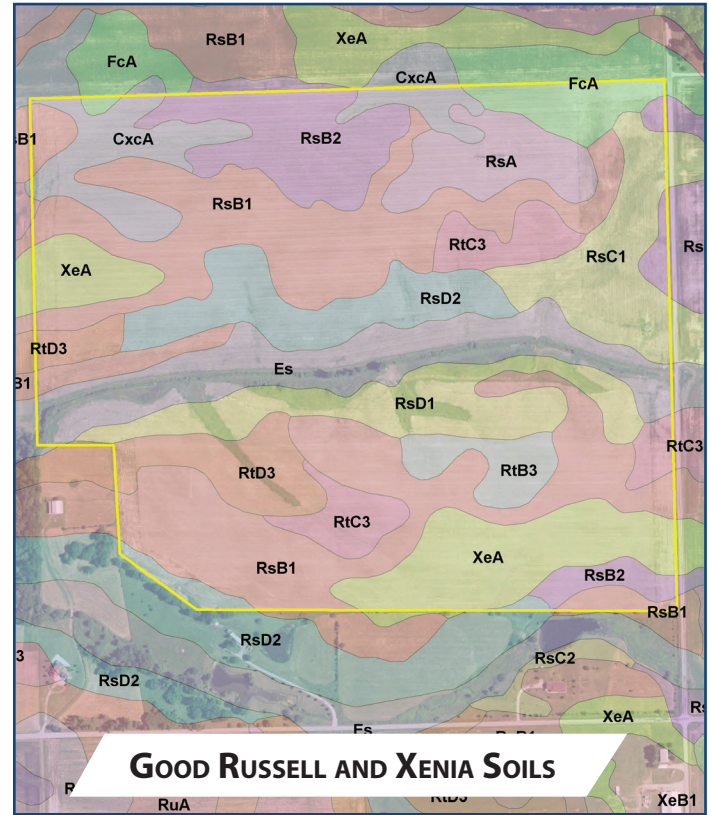
Total Acres:  
**126.3±**  
**ACRES**

• Union  
County,  
IN

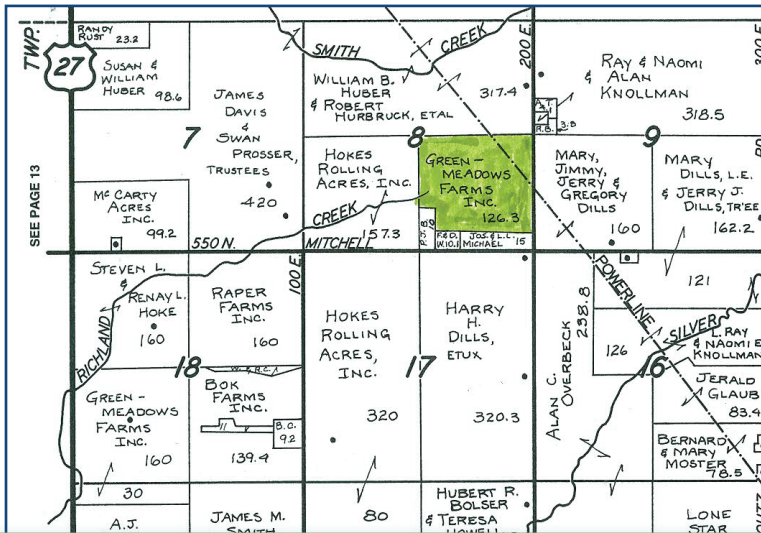


Price:  
**\$800,000 (\$6,324/  
ACRE)**

## SOILS MAP



## PLAT MAP



The information on this sheet is subject to verification and no liability for errors or omissions is assumed by the Schrader Agency.

Greenmeadow Farms 2 • SS60U