

REAL ESTATE LISTING

PROPERTY FOR SALE

Cropland,
Hunting/Recreational
& Potential Building Sites

83.2[±]
ACRES

NEWTON COUNTY, INDIANA • BEAVER TOWNSHIP

Price: \$490,000



PROPERTY DETAILS

Type of Farm: Cropland, Hunting/Recreational & Potential Building Sites

Total Acres: 83.2[±]

Tillable Acres: 64.22[±]

Woods: 13[±]

Section: 24 T, 29 N, R 10 W

Township: Beaver

County: Newton

State: IN

Total Price: \$490,000

Owner: Garry V. & Larry D. Robinson

Directions to Property: From the west side of Morocco at Michigan Ave. (400 S and formerly SR 114) and West St. (CR 350W) go west on 400 S for 2 ½ miles to the property on north side of road.

Possession: Upon closing.

FSA Data:

FSA Cropland: 64.22 Acres

Corn Base Acr.: 47.10, PLC Yield 134

Soybean Base Acr.: 15.70, PLC Yield 36

School District: North Newton School Corporation

Elec. Source: Newton County REMC

Real Estate Taxes: 2017 pay 2018-\$2,187.68

Drainage Assessments: \$116.36



The information on this sheet is subject to verification and no liability for errors or omissions is assumed by the Schrader Agency.

Robinson • MWW09N

SCHRADER
Real Estate and Auction Company, Inc.

800.451.2709
schraderauction.com/listings

Listing Agent: Matt Wiseman
866-419-7223 or 219-689-4373

REAL ESTATE LISTING

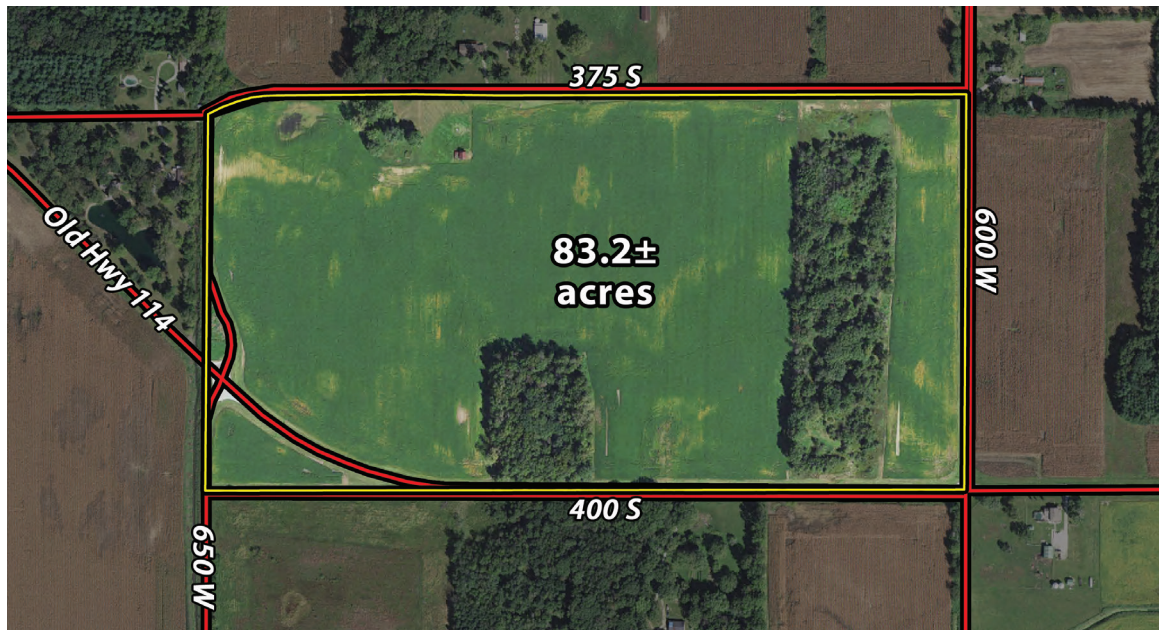
PROPERTY FOR SALE

Cropland,
Hunting/Recreational
& Potential Building Sites

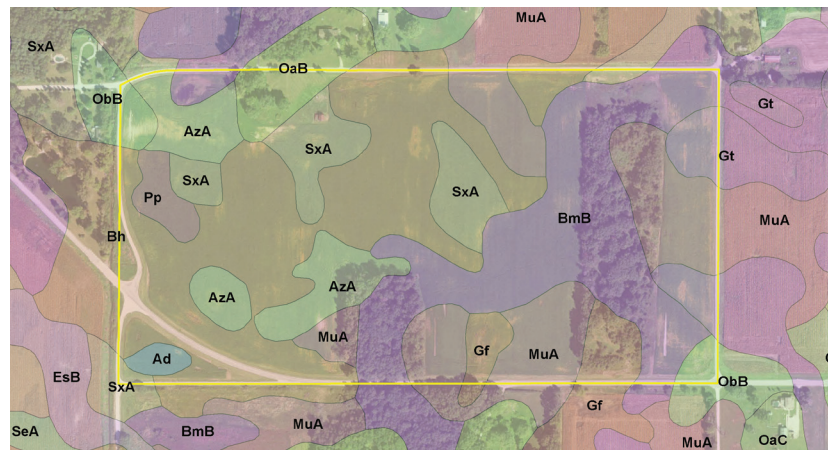
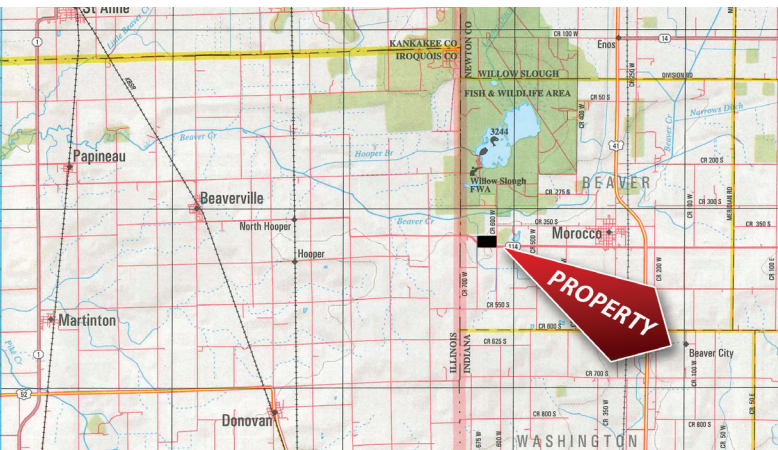
83.2[±]
ACRES



NEWTON COUNTY, INDIANA • BEAVER TOWNSHIP



This property offers a tremendous amount. It has productive tillable land, road frontage around the entire property, a number of potential beautiful home sites, woods for hunting and recreation with loads of deer activity and a scenic old windmill with well to boot. The property is about 1/2 mile south of Willow Slough. Sellers will consider divisions of the property.



The information on this sheet is subject to verification and no liability for errors or omissions is assumed by the Schrader Agency.

Robinson • MWW09N



800.451.2709
schraderauction.com/listings

Listing Agent: Matt Wiseman
866-419-7223 or 219-689-4373