
FARWELL IRRIGATION DISTRICT

ASSESSMENT 2016

Tuesday, July 05, 2016

| <i>Owner</i> | <i>Unit No</i> | <i>Acres</i> | <i>Amount</i> | <i>Description</i> |
|-----------------------------|----------------|--------------|---------------|---------------------------------------------------|
| Virgil Becker Estate | | | | |
| | 210 | 89.4 | \$1,519.80 | SW1/4NW1/4 (8.20), SW1/4 (81.2), SEC. 28-15-10 |
| | | <hr/> | <hr/> | |
| | | 89.4 | \$1,519.80 | |

Assessment \$17.00 per Acre

Assessment Delinquent May 1, 2017

Please make payments to

Farwell Irrigation District

Box 137

Farwell, NE 68838



89.4 Water Right Acres

0 Feet

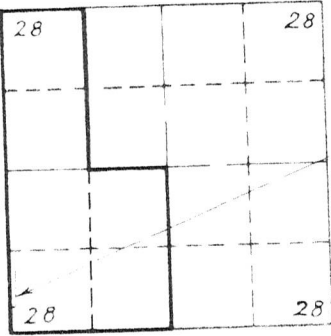
1:4,600

Transfer of Acres

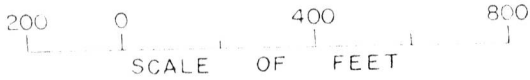
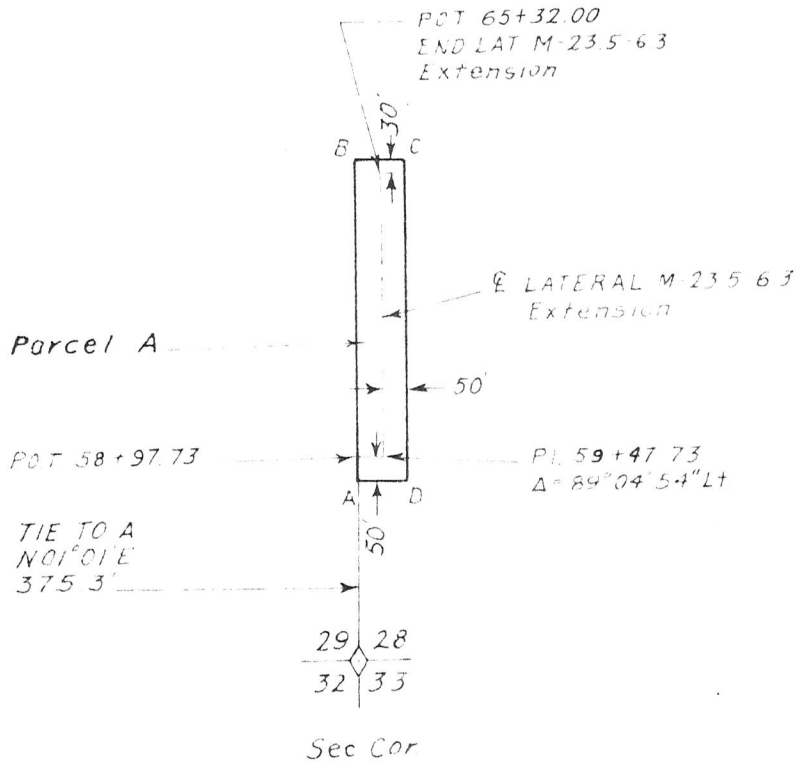
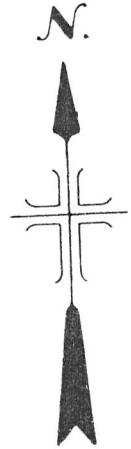
Loup Basin Reclamation District - Farwell Irrigation District

Date: 12-11-08





KEY MAP



Parcel A
1.52 Acres

| CRS | BEARING | LENGTH | CRS | BEARING | LENGTH |
|-----|----------|--------|-----|---------|--------|
| A-B | N01°01'E | 665.1' | | | |
| B-C | S88°59'E | 100.0' | | | |
| C-D | S01°01'W | 663.5' | | | |
| D-A | N89°54'W | 100.0' | | | |
| | | | | | |
| | | | | | |
| | | | | | |
| | | | | | |
| | | | | | |
| | | | | | |
| | | | | | |
| | | | | | |
| | | | | | |
| | | | | | |

Tract 726
Vivian
 Ernest & Effie Becker
 Pt. W1/2 SW1/4 SW1/4, Sec. 28
 T15N-R10W-6PM

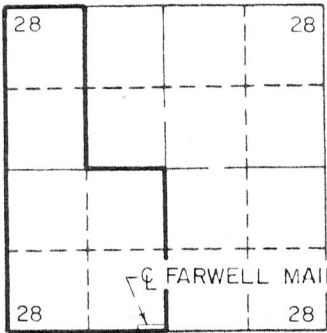
UNITED STATES
 DEPARTMENT OF THE INTERIOR
 BUREAU OF RECLAMATION
 MISSOURI RIVER BASIN PROJECT
 MIDDLE LOUP DIVISION - FARWELL UNIT - NEBR

**FARWELL MAIN LATERALS
 RIGHTS - OF - WAY**

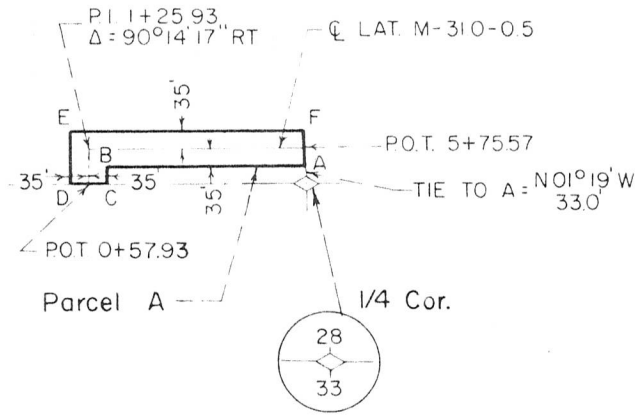
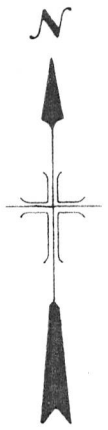
DRAWN D.D.D. SUBMITTED *Small J. Miller*
 TRACED D.D.D. RECOMMENDED *D. Mack*
 CHECKED A.J.G. APPROVED *Lowell J. Rizzo*

GRAND ISLAND, NEBR. 12-28-64 707-705-1845

GPS 455-147



KEY MAP



200 0 400 800
SCALE OF FEET

Parcel A
0.83 Acre

| CRS | BEARING | LENGTH | CRS | BEARING | LENGTH |
|-----|-------------|---------|-----|---------|--------|
| A-B | S 89° 32' W | 415.0' | | | |
| B-C | S 00° 43' E | 33.0' | | | |
| C-D | S 89° 32' W | 70.0' | | | |
| D-E | N 00° 43' W | 1030.0' | | | |
| E-F | N 89° 32' E | 484.3' | | | |
| F-A | S 01° 19' E | 70.0' | | | |
| | | | | | |
| | | | | | |
| | | | | | |
| | | | | | |
| | | | | | |
| | | | | | |
| | | | | | |
| | | | | | |

virgil
Ernest & Effie Becker
Pt. SE 1/4 SW 1/4 Sec. 28
T15N-R10W-6P.M.

UNITED STATES
DEPARTMENT OF THE INTERIOR
BUREAU OF RECLAMATION
MISSOURI RIVER BASIN PROJECT
MIDDLE LOUP DIVISION-FARWELL UNIT-NEBR.
FARWELL MAIN LATERALS
RIGHTS - OF- WAY

DRAWN D.C.M. SUBMITTED E.J. Brodman
TRACED D.C.M. RECOMMENDED M. J. Mueller
CHECKED C.J.M. APPROVED Lewis R. Riggs

GRAND ISLAND, NEBR. 3-27-61 707-705-501