

# LAND FOR SALE

AKRON, IN • FULTON Co.

58<sup>±</sup> ACRES  
HENRY TOWNSHIP

58± acres of tillable land, woods, lakefront, hunting and fishing. Approximately 32± acres tillable, 17± acres wildlife and recreation. Approximately 1150' of lake front with 9± acres under the lake's surface.

**Directions:** 1 mile south of SR 14 in Akron, IN on SR 19 to CR 225 S, turn west 1/2 mile on north side.

**Owner:** Land Unlimited Partnership

**Price per Acre:** \$4,750

**Farm Type:** Grain/Recreation/Lake

**Tillable Acres:** 32±

**Recreation Acres:** 17±

**Zoning:** Ag

**Fencing:** No

**Section:** 24

**Possession Date:** At closing, subject to Tenant's rights.

**Improvements:** None

**Topography:** Rolling

**School:** Tippecanoe Valley

TOTAL PRICE: \$275,500

The information on this sheet is subject to verification and no liability for errors or omissions is assumed by the Schrader Agency.

Land Unlimited • GIB14F



800.659.9759  
schraderauction.com/listings

**Listing Agent: GARY BAILEY**  
260-417-4838 • gary@garybaileyauctions.com

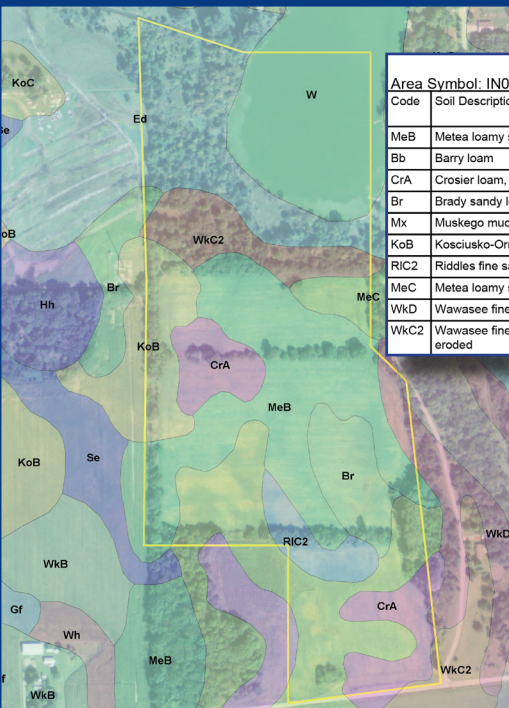
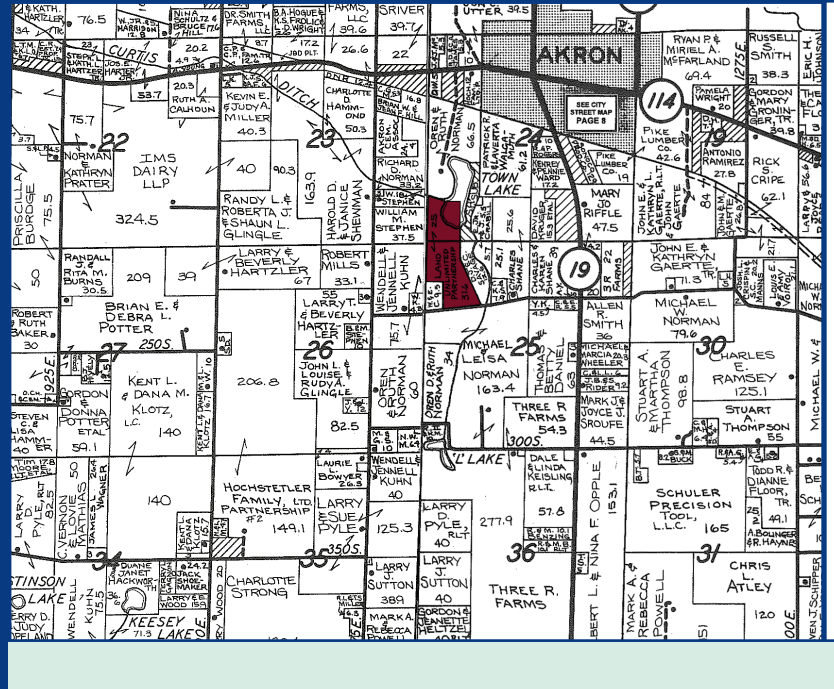
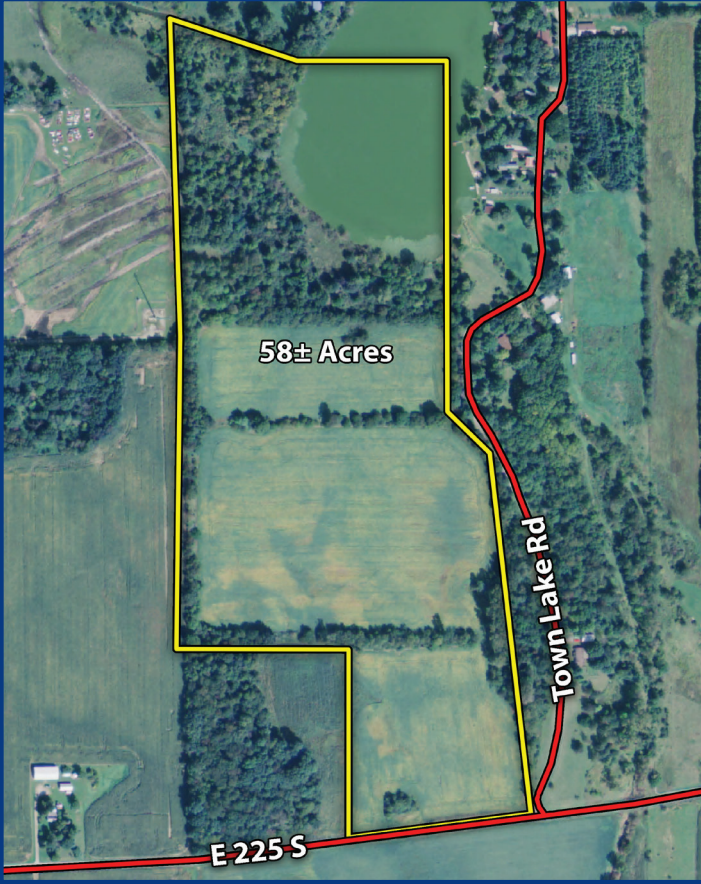


# LAND FOR SALE

FULTON Co., IN

# 58<sup>±</sup> ACRES

## HENRY TOWNSHIP



Area Symbol: IN049, Soil Area Version: 17

Code	Soil Description	Acres	Percent of field
MeB	Metea loamy sand, 2 to 6 percent slopes	12.42	31.8%
Bb	Barry loam	8.51	21.8%
CrA	Crosier loam, 0 to 2 percent slopes	4.95	12.7%
Br	Brady sandy loam	3.22	8.3%
Mx	Muskego muck, drained	2.79	7.2%
KoB	Kosciusko-Ormas complex, 2 to 6 percent slopes	2.47	6.3%
RIC2	Riddles fine sandy loam, 6 to 12 percent slopes, eroded	1.98	5.1%
MeC	Metea loamy sand, 6 to 12 percent slopes	1.26	3.2%
WKD	Wawasee fine sandy loam, 12 to 18 percent slopes	0.80	2.1%
WkC2	Wawasee fine sandy loam, 6 to 12 percent slopes, eroded	0.62	1.6%

