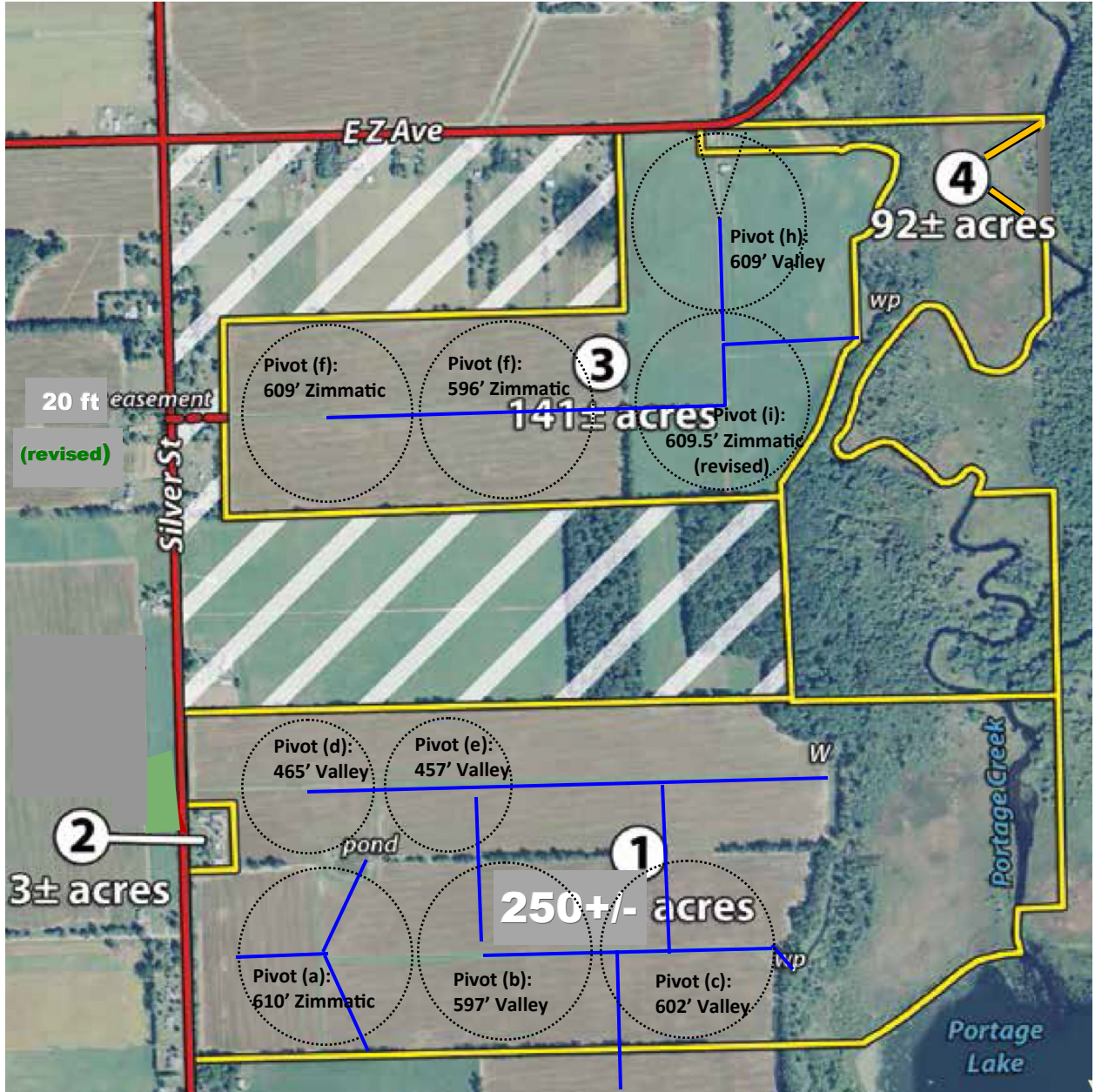


**486+/- Acres : Irrigation Plat (Revised)**



**IRRIGATION  
UNDERGROUND PIPING:**  
All 6 inch ———

**NOTE:**  
Acreage adjustment to TR #1 and to entire farm

**TRACT#1: 250+/- Acres (revised) with 180.2+/- ac cropland with balance in wood & marshland. Has frontage on Silver Street. Has Portage Creek frontage. Predominant crop soil is Oshtemo sandy loam. Improvements include 5 Irrigation Pivots :**

**(a) Zimmatic 3 tower fixed pivot (2010):** 610 ft. long, 600 gpm, 3 phase that runs off portable generator, Serial # LA8049; Water supplied from pond east of main bldg. site (Water pump & generator not included)

**(b) Valley 3 tower model 7000 fixed pivot (2013):** 597.5 ft. long, 600 gpm, 3 phase that runs off portable generator, Serial #1095445; Water supplied from pond east of field (Water pump & generator not included).

**(c)Valley 3 tower model 8000 towable pivot (1998):** 602 ft. long, 600 gpm, 3 phase that runs off portable generator; Water supplied from pond to east of field (Water pump & generator not included).

**(d) Valley 2 tower model 8000 towable pivot (2013):** 465 ft. long, 600 gpm, 3 phase that runs off portable generator.; Water supplied by well (Generator for well not included)

**(e)Valley 3 tower model 8000 towable pivot (1999):** 457 ft. long, 600 gpm, 3 phase that runs off portable generator,;Water supplied by well (Generator for well not included)

**WELL:** 10 inch, 58 ft deep, 550 gpm (revised), 40 hp submersible pump that runs off portable generator (not included). Provides water for pivots (d) & (e).

**TRACT #2: 3+/-Acres Main Building Site: With frontage on Silver Street. Improvements include:**

- **2 story frame house:** 1644+/- sq.ft plus 468+/- square ft basement. 3 bedroom, one bath. natural gas heat, central air, wood stove
- **Garage/Shop:** 32'x 30' single phase electric with concrete floor
- **Machine Shed:** 54'x40' with concrete floor.
- **Cattle barn:** 77'x34' milking barn with 20'x16'milk house and 50'x30' attached pole bldg..
- **Silos:** Two Harvestore silos(56'x19' and 36'x19'), concrete stave silo
- **Shed/corn crib:** 44'x24'

**TRACT #3: 141 +/-Acres with approx. 137+/- Ac cropland. Has frontage on Springer Road/East Z Avenue plus access via easement from Silver Street. Predominant crop soil is Oshtemo sandy loam. Buildings include pole barn (56'x30'), concrete stave silo plus 4 Irrigation Pivots:**

**(f) Zimmatic 3 tower fixed pivot (2011):** 609 ft. long, 600 gpm, 3 phase that runs off portable generator, Serial # LB2546; Water supplied from Portage Creek (Water pump & generator not included).

**(g) Zimmatic 3 tower fixed pivot (2011):** 596 ft. long, 600 gpm, 3 phase that runs off portable generator, Serial # LB2547; Water supplied from Portage Creek (Water pump & generator not included).

**(h) Valley 4 tower towable pivot (1999):** 609 ft. long, 600 gpm, 3 phase, Serial #L151770; Water supplied from Portage Creek (Water pump & generator not included).

**(i) Zimmatic 4 tower fixed pivot (2014):** 609.5ft. long (revised), 600 gpm, 3 phase, Serial # LD0369; Water supplied from Portage Creek (Water pump & generator not included).

**The right to access water for irrigation from the Portage Creek shall also be granted to this tract if purchased separately from Tract #4.**

**TRACT #4 92+/-Acres with 165 ft of frontage on Springer Road/East Z Avenue with woods, marshland, approx. 5+/- acres of cropland and potential building sites along Portage Creek:** This wooded recreational tract lies along the east northeast side of the farm and has direct access to the Portage Creek. If purchased separately from Tract 2, this tract will have 165 ft of frontage along Springer Road along and shall include 20 ft wide lane along of the north & east side of the existing cropland plus a minimum of 165 ft of width where Portage Creek is the property line. **Note: If purchased separately from Tract #3, a 30 ft wide easement shall be granted to the owner of Tract #3 to access water for irrigation from the Portage Creek.**

**TRACT #5: John Deere diesel water pump (with white wheels):**

John Deere 4.5L diesel (serial # T04045T774353), 2371 hrs as of 6/30/15; with Berkeley Pump Model B3JOBM, 13.5 " impeller, rated @ 600 gpm (serial #G031197)



**TRACT#6: John Deere diesel water pump (with green wheels):**

John Deere diesel (serial # CD 4039T 110913), 7012 hrs as of 6/30/15; with Berkeley Pump Model B3JOBM, 13.5" impeller, rated @600 gpm (serial #G200793)



**TRACT #7: John Deere diesel water pump (with black wheels):**

John Deere diesel (serial # TO439T435494), 9060 hrs as of 6/30/15; with Berkeley Pump Model B3JOBM, 13.5" impeller, rated @600 gpm (serial #G280194)



**TRACT #8: Lester-Petter diesel generator:** Lister-Petter diesel Alpha series (serial # 4800770 LPA2A079) with generator, Lima Mac model 250MSL1337 (black)



**TRACT #9: Caterpillar diesel generator:** Caterpillar diesel model C2.2 diesel (serial # C4M02982), 1180 hrs as of 6/30/15; with generator, Lima model 280MSL0056-407 (yellow)

