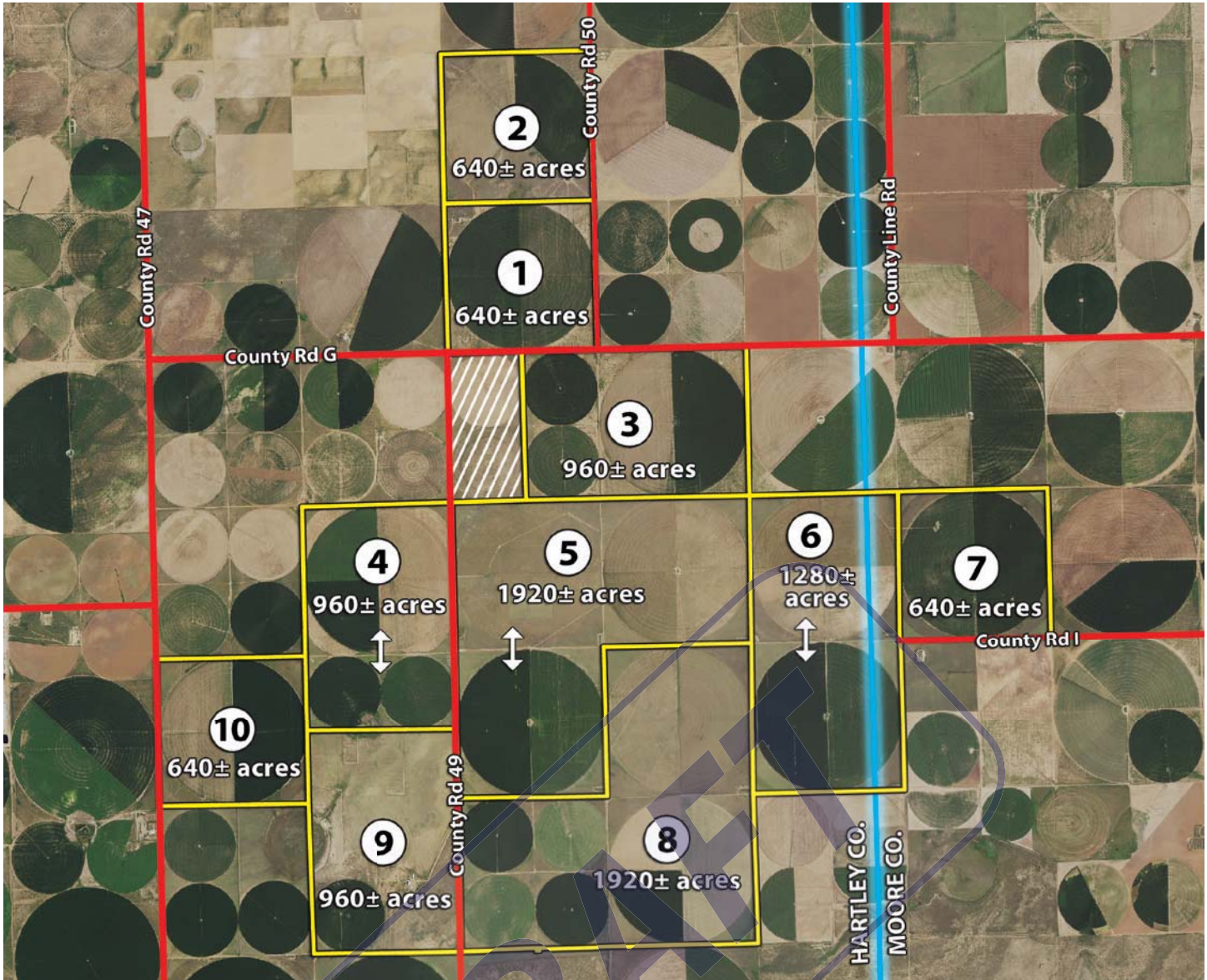


EXHIBIT A

Buyer: _____

Seller: _____

Auction Tract Map & Descriptions



TRACT #	SECTION *	COUNTY	ACRES (±)	IRRIGATION EQUIPMENT **
1	418	Hartley	640 (±)	1995 18-tower Valley, pumps and motors
2	423	Hartley	640 (±)	1999 18-tower Valley, pumps, motors and generator
3	382, E/2 381	Hartley	960 (±)	1993 17-tower Zimmatic, 1993 7-tower Zimmatic, 1985 8-tower Zimmatic, pumps, motors and generators
4	377, N/2 338	Hartley	960 (±)	1997 18-tower Reinke, 1980 7-tower Valmon, 1980 8-tower Valmon, pumps, motors and generators
5	376, 375, 339	Hartley	1,920 (±)	2002 18-tower Reinke, 1995 18-tower T-L, pumps, motors and generators
6	374, 341	Hartley, Moore	1,280 (±)	1999 18-tower Reinke, 1991 19-tower Reinke, pumps, motors and generators
7	373	Moore	640 (±)	1997 18-tower Reinke, pumps, motors and generator
8	340, 333, 334	Hartley	1,920 (±)	2012 8-tower Reinke, (2) 1997 18-tower Reinke, (2) 1997 8-tower Reinke, 1985 8-tower T-L, pumps, motors and generators
9	335, S/2 338	Hartley	960 (±)	1980 10-tower Reinke, pump and motor
10	337	Hartley	640 (±)	1997 18-tower Zimmatic, pumps, motors and generator
			10,560 (±)	

* All in Block No. 44, H.&T.C. Ry. Co. Survey

** The Irrigation Equipment for any tract includes all equipment comprising and connected to the irrigation system(s) currently located on such tract and/or associated with the well(s) serving such tract, including but not limited to towers, sprinklers, pumps, motors, generators (if any), and well-related equipment.

Boundary lines depicted in the marketing materials and auction tract maps, including this Exhibit, are for illustrative purposes only. Auction tract maps, including this Exhibit, are not provided as survey products and are not intended as authoritative representations of property boundaries.