



135± acres

Offered in 4 Tracts

Peru, IN
Miami County

Monday, December 9
Farm Equipment - 11AM • Real Estate - 6PM

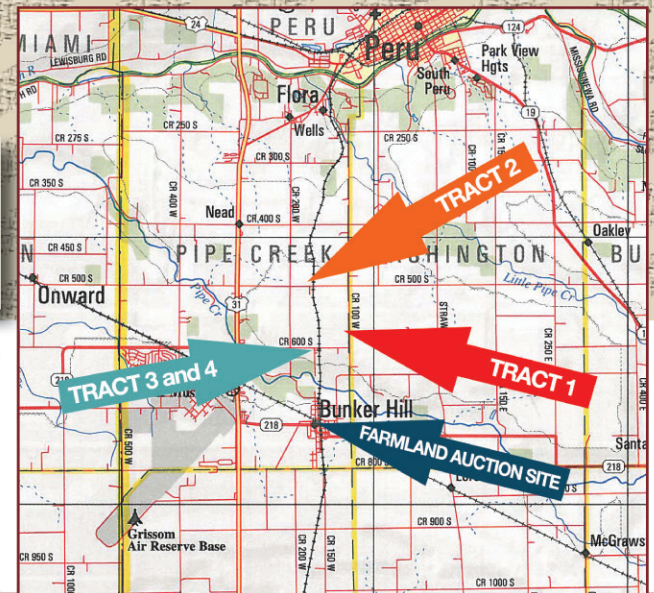
Approximately 5 Miles South of Peru, IN

PROPERTY LOCATION: From Peru, IN, take US 31 approximately 5 & 6 miles south to CR 500 S then 1 1/2 miles east on CR 500 S or take US 31 approximately 6 miles south to CR 600S. Tracts are located on CR 500S, CR 600S and CR 100W.

EQUIPMENT AUCTION LOCATION: 1 3/4 miles east of US 31 (at the BIG Rocking Chair) on CR 500 S.

AUCTION LOCATION - FARM LAND: From US 31 & SR 218, take SR 218 1 1/2 miles east to Bunker Hill, IN to church at 100E Broadway, United Methodist.

TRACT INFORMATION:
TRACT 1: 39± ACRE parcel of land with quality soils, all tillable except for CR 100W frontage.
TRACT 2: 62± ACRE tract of land with quality soils, mostly all tillable land and frontage on CR 500S.
TRACT 3: 20± ACRE tract of land with 19.89 acres of tillable land, quality soils and frontage on CR 600S. There is .9 acre in CP8A program with a payment of \$120.60/year. Also, there is a 24'x35' barn with lean-to.
TRACT 4: 14± ACRE tract of land with 10.78 acres of tillable land with the balance in woods and CR 600S & 160W.



FARM EQUIPMENT INSPECTION DATE:
Friday, December 6th
9:00-4:00 Eastern



NH CR960 COMBINE • NH 98C • NH 84C • NH 74C • UM 36 & 25 TRANSPORTS • KINZE GRAIN CART • 70' & 60' AUGERS (2) IH SEMI TRACTORS • (2) GRAIN TRAILERS • 25' CORN PRO GOOSENECK • 20' WILSON ALUM. STOCK TRAILER

2006 NH CR960 combine w/ Ag Leader monitor, 20.8 R 42 tires & hub duals, 480/70 R 30 rears, lateral tilt, KPAB chopper, twin fan spreader, 1449 separator hours, 1929 engine hours (SN-103656) • 2007 8x30" NH 98C poly corn head w/ knife rolls, hyd stripper plates, auto header height, single point cam lock hookup (SN-021603) • 2005 36' NH 84C flex draper head (SN-001062) • 2008 35' NH 74C flex grain platform (SN-023171) • UM HT 36 head transport w/ adj. rests, 2 strap tie downs & light kit • UM HT 25 head transport w/ adj. rests, 2 strap tie downs & light kit • Kinze 600 grain cart w/ front fold down auger, 24.5-32 knob tires & roll tarp • (2) hopper wagons w/ Bradford 10T gears • hyd drive brush auger • 70'x10" Mayrath swing away grain auger w/ hyd lift • 60'x8" Mayrath swing away grain auger w/ hyd lift • 1996 IH 8200 air ride, tandem axle semi tractor w/ MII Cummins, 9 spd, 275/80 R 22.5 tires, 650,706 miles • 1989 IH C09670 tandem axle semi tractor w/ Detroit, 9 spd, 11 R 22.5 tires, sleeper, showing 631,674 miles • 1988 Wilson 42' aluminum hopper bottom grain trailer w/ 285/75 R 24.5 tires, aluminum rims & roll tarp • 1996 Jet 30' double hopper steel grain trailer w/ drop & chutes w/ 11 R 22.5 tires & Shur-lok tarp • 2008 Corn Pro 25' gooseneck flat bed trailer w/ 5' fold down ramps, axle size 14,000 lbs, tire size 235/85R/16 • 20'x7' Wilson aluminum livestock trailer w/ center cut gate, good tires & repacked bearings

MX 200 • C-IH 7240 • C-IH 5220 • FARMALL A • CLARK FORKLIFT

1999 C-IH MX200 MFWD tractor w/ 480/80 R 42 rear tires & hub duals, 380/85 R 30 front tires & duals, front fenders, quad remote, quick coupler, 1000 PTO, (10) suitcase wts, 3282 hours (SN-0098878) • 1995 C-IH 7240 MFWD tractor w/ 18.4 R 42 rear tires & hub duals, 16.9 R 26 fronts, triple remote, quick coupler, (18) suitcase wts, 4873 hours (SN-0058660) • 1993 C-IH 5220 post cab tractor w/ 18.4 R 38 tires, dual remote, 1000 PTO, 4270 hours (SN-1025593) • 5' grapple bucket • Farmall A wide front tractor w/ 1 row cultivator • Clark CV 40 B dual wheel gas forklift w/ 4000 lb. capacity

16X30 KINZE 2600 PLANTER • NURSE TRAILER • C-IH ECOLO-TIL • PLOW • RIDGE TILL • 28' PACKER • 28' DISK • 27' FIELD CULT. 16X30" Kinze 2600 planter w/ Yetter coulters on front bar & on seed unit, Precision Plant 20/20 Seed Sense & Kinze KM 3000 monitor • 2010 1025 gallon poly rib B-B tandem nurse trailer w/ Briggs 850 series transfer pump • 5 shank C-IH ecolo-til in line disc ripper w/ depth wheels & light kit • 6x16" IH 700 ASR plow • 6 row Buffalo ridge till plant system • 28' Brillion U fold packer • 28' Sunflower flex frame disk • 27' D-A field cultivator w/ bar harrow & rear hitch • 8 row IH hyd fold Danish tine cultivator

NH BR 780A BALER • NH 570 BALER • NH H7230 DISCBINE • KUHN RAKE • IH SPREADER • DRY FERT. SPREADER • SHOP ITEMS • MISC. TOOLS

2006 NH BR 780A round baler w/ xtra sweep, net wrap & bale Commander plus control (SN-014078) • 1990 NH 570 square baler • 16' NH H7230 discbine w/ light kit (SN-086943) • 9' Kuhn GA 3200 GT rotary rake w/ 540 PTO • Master double chain elevator w/ 8HP Briggs • (1) flat rack wagon • IH 540 single beater manure spreader • New Leader LSV 55 dry fertilizer spreader • hyd wood splitter trailer w/ 8HP Briggs • 3 pt poly sprayer • Millermatic Bobcat 225 welder/generator • Millermatic 252 gas welder • (2) NAPA 3 1/2 T floor jacks • Husky Pro 2-stage air compressor • Steele 14" cutoff saw • Stihl chain saw • (4) bags Greenlight seed corn • (18) bags Greenlight seed soybeans • Approx. 200± 4x5 round mixed hay bales



Terms: Cash, personal or corporate check with proper I.D. • Not Responsible for accidents. • Lunch available.

TRACT 1

| SOILS | |
|--------|--------|
| Symbol | Name |
| Bc | Blount |
| Pw | Pewamo |

TRACT 2

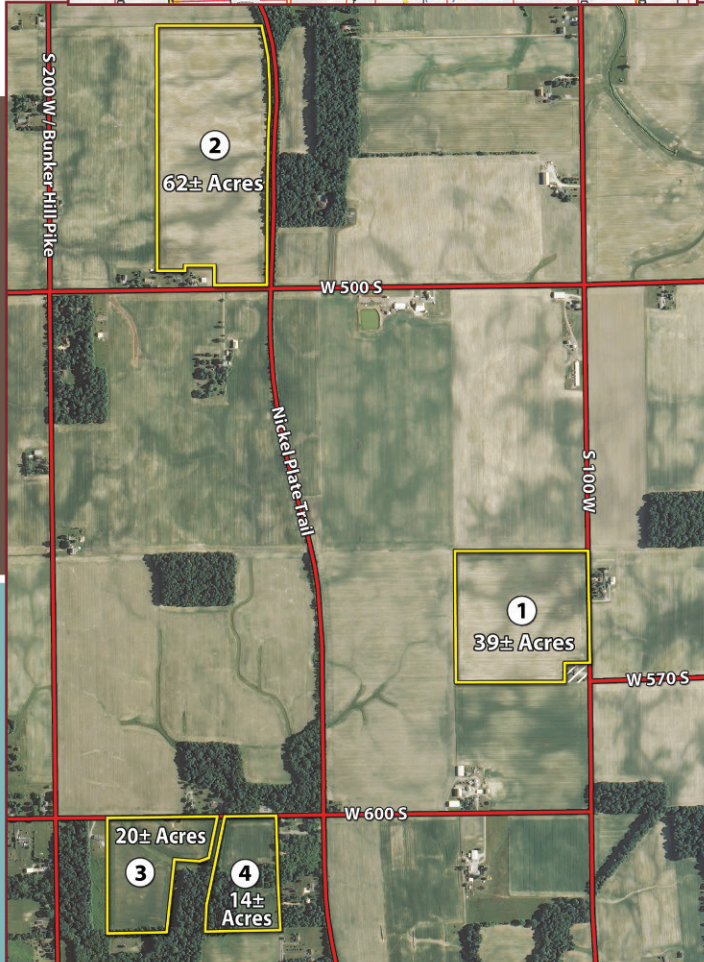
| SOILS | |
|--------|--------|
| Symbol | Name |
| Bc | Blount |
| Pw | Pewamo |
| MsB | Morley |

TRACT 3

| SOILS | |
|--------|----------|
| Symbol | Name |
| GlpC3 | Glynwood |
| MsB | Morley |

TRACT 4

| SOILS | |
|--------|----------|
| Symbol | Name |
| GlpC3 | Glynwood |
| MsB | Morley |



2012 - PAY 2013 REAL ESTATE TAXES
TRACT 1: \$886/yr
TRACT 2: \$1266.74/yr - Include a tool shed which is not on this tract.
TRACTS 3 & 4: \$693.12/yr

Owner: Jodi Coblentz
Sale Managers: Jim Hayworth
888-808-8680 or 765-427-1913
Jimmy Hayworth

FSA INFORMATION:
TRACT 1: Farmland 40.48 Ac. Cropland 39.58 Ac. Corn Base 19.5 Ac. Soybeans 19.5 Ac.
TRACT 2: Farmland 68.22 Ac. Cropland 61.42 Ac. Corn Base 20.9 Ac. Soybeans 26.3 Ac. Wheat 14.2 Ac.
TRACTS 3 & 4: Cropland 31.3 Ac. Corn Base 16.4 Ac. Soybeans 2.3 Ac. Wheat 10.8 Ac.
TRACT 3: CP8A 9 Ac.

Owner: Coblentz Farms, LLC
Sale Managers: Gary Boggs 800-451-2709 & Jim Hayworth 888-808-8680 or 765-427-1913

Auctioneer's Note: It is with heavy hearts, due to Mr. Joe Coblentz's untimely death, that his farm equipment and quality land will have new owners.

800-451-2709
schraderauction.com

SCHRADER
 Real Estate and Auction Company, Inc.