

Just South of Cambridge City in East Central Indiana

Deer Hunters Special for this Season • Great Combination Recreational Use & Investment Income



for sale
61.6[±]
ACRES

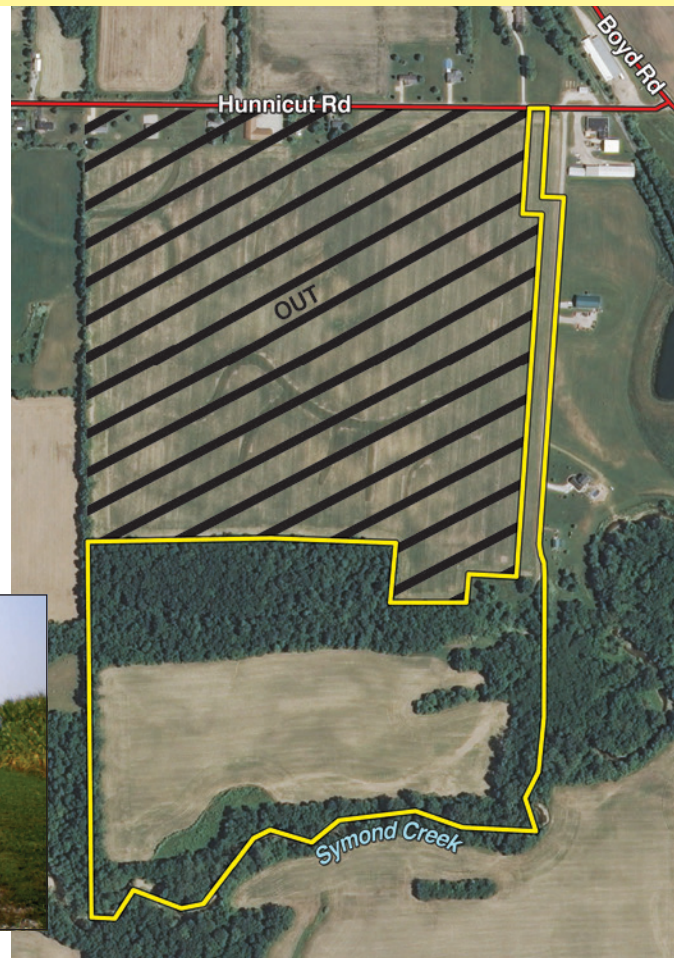


EXIT OFF I-70 AT HWY. 1 THEN 5 MILES
45 Miles East of Indianapolis • 12 Miles West of Richmond

PROPERTY LOCATION: From Hwy. 1 and US 40 then 2 miles south on Hwy. 1 to Old Hwy. 1 (Boyd Road) right 1 mile to Hunnicut Road then left and 1/4 mile to lane on south side.
Just 5 miles off I-70 on Hwy. 1 at Cambridge City Exit.

FEATURES INCLUDE:

- Approx. 19.5 acres Classified Forest. Secluded - Great deer habitat.
 - 27 acres good bottom cropland.
 - 14 acres pretty woodland. Timber potential.
 - Fish, hunt and canoe here right on your land. Symond Creek on south line.
 - Great building site on hill.
 - \$4,000 crop income/year now.
 - Electric to property.
 - Seller to retain 2013 crop income.
 - 2014 crop rights available.
- Listed at \$221,000 or \$3,587/acre
 • Annual Taxes Est.: \$914/year in 2013
 • Owner: Michael Kimm





CENTERVILLE OFFICE:

P.O. Box 202

Centerville, IN 47330

Toll Free **877-747-0212**

765-855-2045

email: schrder@parallax.ws

MAIN OFFICE:

P.O. Box 508, 950 N. Liberty Drive

Columbia City, IN 46725

260-244-7606 • 800-451-2709



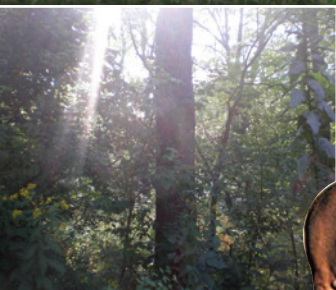
877-747-0212

SchraderAuction.com

Just South of Cambridge City in East Central Indiana

for sale **61.6[±] Acres**

- 45 Miles East of Indianapolis
- 12 Miles West of Richmond



- *Deer Hunters Special for this Season*
- *Great Combination Recreational Use and Investment Income*