

# 40 Acre Grain Farm

*LaPorte County, Indiana*

Wetland Status: Tract Does Not Contain a WETLAND.

**Directions:** *South of US 6 on CR 600 East to 1000 S, then 1/4 mile west with farm on the south side of road.*

**TYPE OF FARM:** Grain  
**TOTAL ACRES:** 40  
**TILLABLE ACRES:** 38  
**ROADS & WASTE:** 2  
**SECTION:** 25  
**TWP.:** Union  
**COUNTY:** Laporte  
**STATE:** Indiana  
**PRICE PER ACRE:** \$4,325.00

**OWNER:** Campbell Trust  
**ADDRESS:** CR 1000 S  
**TAXES PAYABLE:** \$878.00  
**OIL/MINERAL RIGHTS:** Included  
**POSSESSION DATE:** Day of closing  
**ZONING:** Agriculture  
  
**IMPROVEMENTS:** None  
**TOPOGRAPHY:** Level

**HIGH SCHOOL:** Laporte  
  
**FSA DATA:**  
**CORN BASE ACR.:** 35.9  
**CC YIELD:** 109  
**SOYBEAN BASE ACR.:** 1.3  
**CC YIELD:** 41

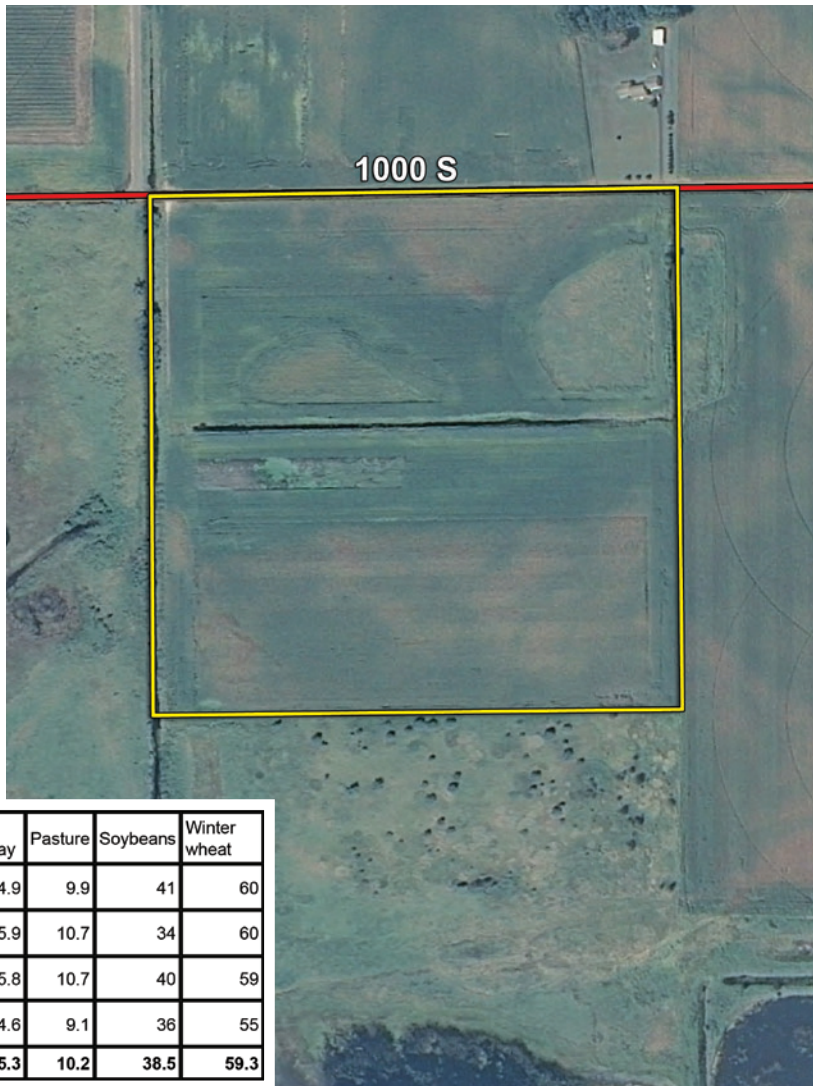
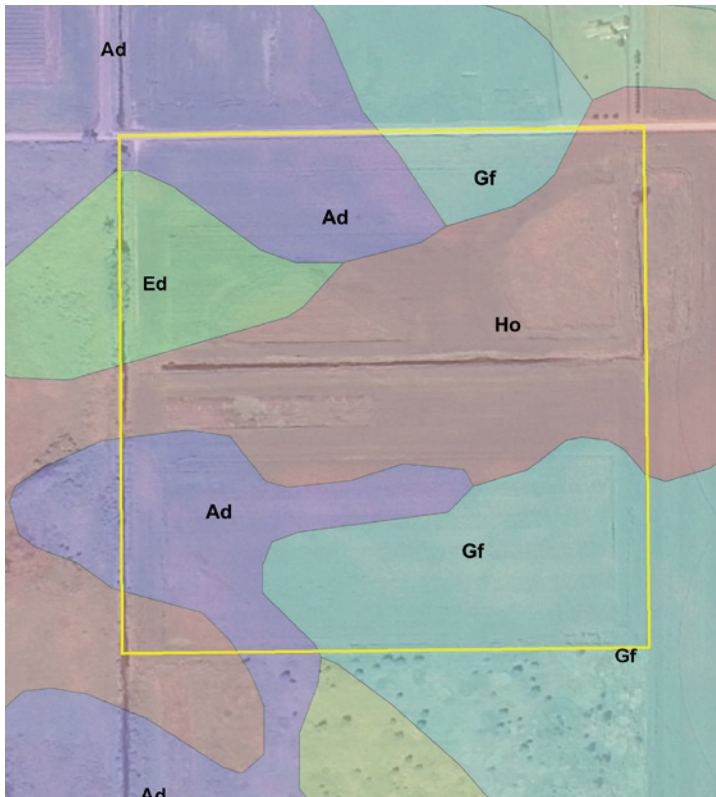
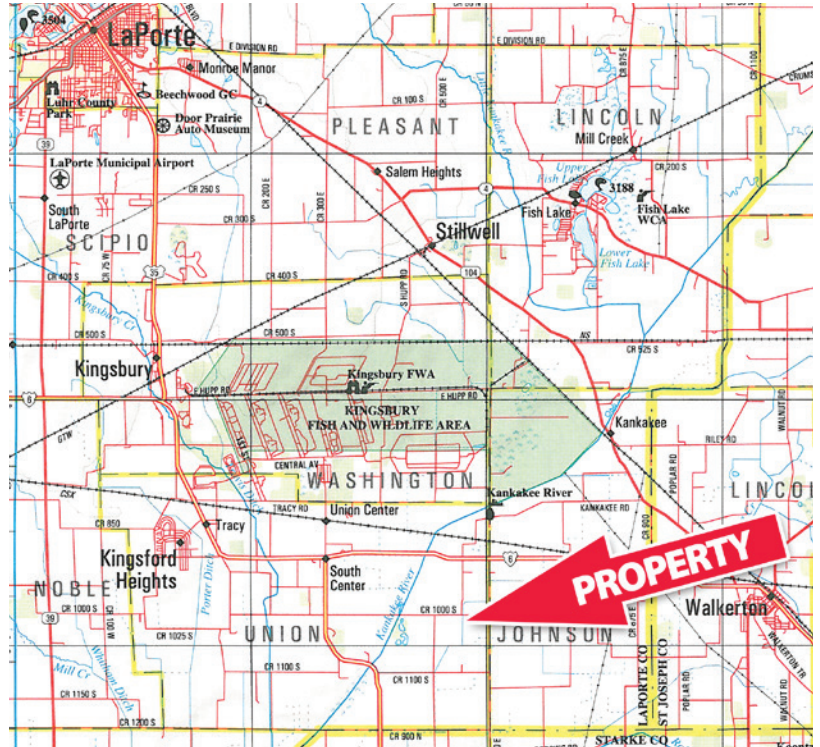
Soil Types		Yield Index
Gilford Sandy Loam	9.7 Ac	149
Houghton Much	15.9 Ac	151
Adrian Much	9.1 Ac	146
Edwards Much	3.3 Ac	138

*Available for buyer to farm in 2013.  
 Acreage crop yields from Surety Agri Data Soil Maps.*

*The information on this sheet is subject to verification and no liability for errors or omissions is assumed by the Schrader Agency.*

**Listing Agents: Keith Lineback • 574-299-7151 or 574-286-2622 (cell)**





Code	Soil Description	Acres	Percent of field	Non-Irr Class Legend	Non-Irr Class	Corn	Grass legume hay	Pasture	Soybeans	Winter wheat
Ho	Houghton muck, drained	16.4	41.6%		Illw	151	4.9	9.9	41	60
Gf	Gilford fine sandy loam	10.3	26.2%		Ilw	149	5.9	10.7	34	60
Ad	Adrian muck, drained	9.3	23.7%		Illw	146	5.8	10.7	40	59
Ed	Edwards muck, drained	3.3	8.4%		IVw	138	4.6	9.1	36	55
<b>Weighted Average</b>						<b>148</b>	<b>5.3</b>	<b>10.2</b>	<b>38.5</b>	<b>59.3</b>