



**TWO AUCTION DATES!!**

# Immaculate Modern Northwest Allen Estate

9116 HUGUENARD ROAD

**Real Estate AUCTION THURSDAY, OCTOBER 11 • 6:00PM**

**Personal Property AUCTION SATURDAY, OCTOBER 13 • 9:00AM**

*Real Estate* • THURSDAY, OCTOBER 11 • 6:00 PM



**Auction held on site! - 9116 HUGUENARD ROAD**  
(located 1-1/2 miles north of Cook Road, just north of Wallen Road.

**TRACT 1: AN IMMACULATE 3 BEDROOM**

**HOME**, with 2 amazing garages, in ground pool, heated hobby building, set upon 2.3 acres.

The home features a gorgeous updated kitchen with eat-in area and walk out to 3 season room.

All Appliances included!! There is a spacious living room with ventless gas log fireplace. There is an additional den / office room off of the back door outside entrance. There is a laundry room and utility room also located off of the back.

The Contemporary Master bedroom is huge with additional sitting area and a walk-out to the in ground pool. The kidney shaped pool is heated with new liner and auto pool cover. There is extensive landscape around the pool and includes a pool house.

The first garage is a 3 car finished garage with a heated and cooled upstairs area. There is an additional finished storage area on the main level of the garage. There is a newer roof on this garage.

The second is a 2 car garage with a lean to heated workshop on the back. There are overhead doors on the lean to. There is also much additional storage space in this garage.

The heated hobby building has lots of possibilities, i.e., game room, sewing room, office, etc. The building is air conditioning also.

There are too many additional amenities to mention on this tract . . . call to see!!!

**TRACT 2: A 40 X 64 POLE BUILDING** with concrete floor, electricity and 2 overhead doors. The walls are 2 x 6 walls. This barn is situated on 1 acre with a concrete driveway going out to the road.

This is not a buildable site at this time, but offers great storage for a small business or local neighbor. If purchased separately, it will be the Buyer's obligation to install new electrical service to the building.

Bid on this tract separately or combine with Tract 1 for a complete 3.3 acre estate!!

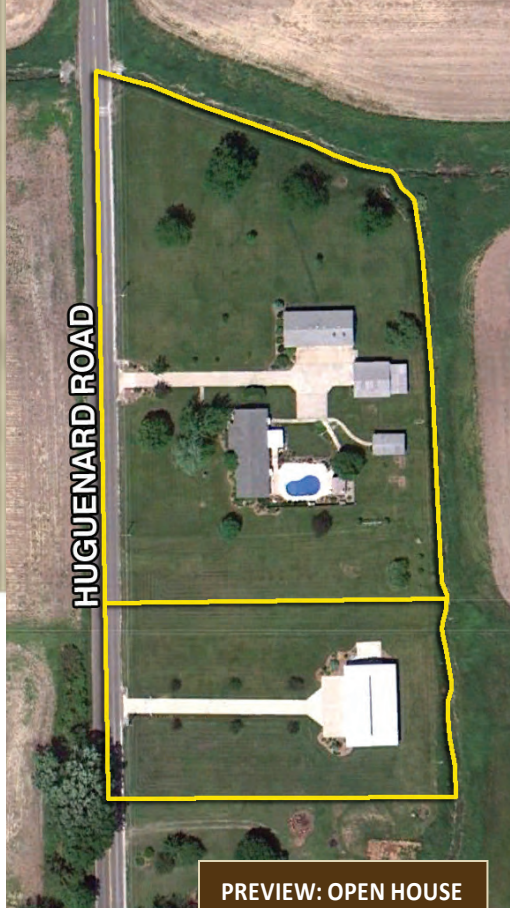
**ANNUAL TAXES: \$3000**

**SELLER: DOUGLAS AND PAMELA HART**

AUCTIONEER:  
JERRY EHLE



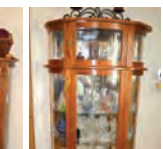
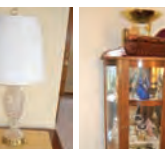
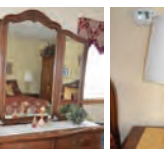
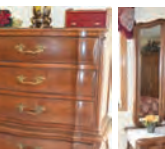
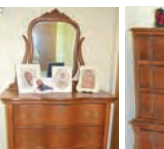
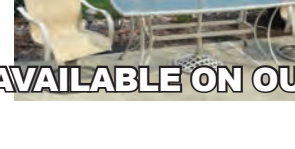
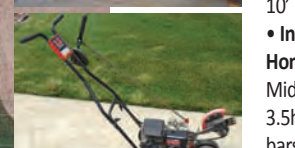
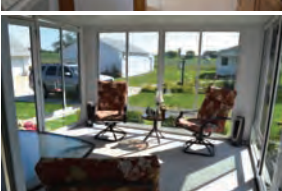
**260-749-0445 • 866-340-0445**  
**www.schraderfortwayne.com**



HUGUENARD ROAD

**PREVIEW: OPEN HOUSE TO PREVIEW THE REAL ESTATE:**

Sun., Sept. 16, 2-4 pm & Thurs., Sept. 20, 6-8pm or call office for private showing - 749-0445



*Personal Property* • SATURDAY, OCTOBER 13 • 9:00 AM

**OUTDOOR EQUIPMENT, LAWN & GARDEN:**

Kubota LA513 Tractor w/ front loader, 4 wheel drive, 3pt. Hitch, Live PTO, serial 358532, only 110 hrs • 2006 Simplicity Citation, 52" 23HP V Twin Vanguard Briggs engine, 364 hrs • Portable diesel fuel station, electric • Ariens roto tiller, new engine • Garden tractor spreader • Kuhn discus mower • Agri-Fab Mow n Vac • Fimco elec. sprayer w/ 10' boom • Coleman Model 5400 Powermate 4000 watt generator • Industrial Plus 5hp power washer • Yard Machine 3.5hp edger • Homelite gas powered leaf blower • Dayton 17" chainsaw • 3 Pt. Middle buster • 3 Pt. Hitch pond scoop • 3 Pt. Hitch boom • 20" 3.5hp push mower • True Temper wheel barrow • Tractor draw bars • Farm Force rear blade • Bird houses • Clippers, shears, rakes, shovels, hoes, pitchfork, sledgehammer • Aluminum step ladder • 20' fiberglass ext. ladder • Ladder jacks • tomato plant holders • dog house • heated cat house • Antique garden plow • Peach baskets • Garden tractor wheel weights • Lawn roller • Camping tri pod • Camp stove • Grow lights • Brass outdoor lights • Black victorian style mail box on pedestal • Flower pots • Aluminum 18' flag pole • Spray nozzles • Misc. 2 gal. sprayers • Misc. landscape light parts • Bushel baskets • Canning jars

**WOODWORKING TOOLS, HAND TOOLS, AUTO & GARAGE ITEMS:**

Craftsman 10" radial arm saw w/ stand • Craftsman 8 1/4" compound miter saw • Task Force 13 dr. tool box • 6' x 30" x 6' tall scaffolding • Power glow drop light • 9-drawer tool chest • Small wood clamps • 2-Ton hydraulic transmission jack • Laser level w/ tripod stand, new • Elec. wood stapler • Black & Decker buffer • Large Craftsman reciprocal saw • Large Ridge 36" pipe wrench • Drop cords • Fill Rite crank barrell pump • 48" Farm jack • Brace bit drill • Pipe bender • Pry bars • Acetylene torch gauges • Poly truck tool box • Rubbermaid truck tool box • Hydraulic jack • Ball hitches • Bench vises • Tarps • Electric blower • Metal & plastic shelving • Metal & wood work benches • 2 Lamp utility light • OMC Locator • Misc. gas cans • NAPA air filters, brake shoes • Misc. auto fluids • Drywall jack, like new • New trailer winch • Devilbiss roofing coil nailer • cut-off saw • wheel puller • Craftsman tool box • 6' halogen lamp • Rubbermaid storage cabinet • Assorted hand tools & sockets • Misc. nuts & bolts, fasteners

**BUILDING SUPPLIES, MISC. EQUIPMENT:**

20 lb. Freon tanks, Culligan model WG1054 water softener system w/ tanks • Goodman 2.5 ton AC condensing unit • Hardware shelf on wheels LOADED w/ fasteners, 190+ bins • New sump pump basin w/ hoses & fittings • Spools of misc. wire & coaxial cable • Misc. vacuum hoses • Electrical supplies, duplexes, covers, ballasts, fittings, metal & plastic conduit • Plumbing supplies, pvc pipe, irrigation pipe, • Underground gas pipe, 1" dia. • AC fan motors w/ blades • Rebar • Misc. shingles & felt • 2 PVC windows • 6' Cedar fence boards • Water booster • Light bulbs • 3-8' wood table tops

**FURNITURE, GLASSWARE, HOUSEHOLD ITEMS:**

Blond coffee table & 2 end tables • Twin beds, 2 sets • Mattress pads • Pfaff model 2050 Oak 4 dr. sewing cabinets • 2-Drawer oak filing cabinet • Norieke China • 2 Crystal vases • 2 Crystal Cruiets • Czechoslovakia crystal perfume bottles & toothpick holders • Gibson glass ring holders • Jabeonski crystal paper weight made

**in Poland • Cut glass cruets • 8 Oil lamps from Chicago**

Leften from Poland • Home trend dish set • Queen size bed, mattress 5 yrs old • Flowers & pictures • Lamps • Pillows, bedding, linens • 5 Pc. white bedroom suite, solid cherry, (2) 2-dr. end tables • 6-dr. dresser • 6-dr. dresser w/ tri-fold mirror, 64" long • Deacon bench w/ mirrors & hooks, 6' long • Secretary, flip top w/ dr. & doors • King bed w/ head board, mattress, corner TV cabinet • 2 Wing back recliners • Dry sink • End table • Hutch, 3 dr. glass front top, 3 doors on bottom • 48" Solid oak table, 4 chairs, 2 leaves • 2 Corner cabinets w/ glass fronts • Small 4 shelf table • TV stand • 2 End tables & 1 sofa table by Thomasville • 2 Stifel lamps • 2 Sofa recliners • 2 Curio cabinets • Bath scales • Card table, 4 chairs • Copper kettle • Office desk chair • Computer work desk • Patio table set, 4 chairs, side table • Pool furniture, rectangle table, 4 loungers, 2 sofa tables, 3 rockers, umbrella • Fountain • Misc. pool equip. • 2 Dehumidifiers • Char Broil stainless steel grill w/ side burner • 2-Dr. file cabinet

**KITCHENWARE, APPLIANCES:**

College size refrigerator • Chest type freezer • Victorio strainer • Large Rival food grinder w/ all attachments • Large Hamilton Beach roaster oven • Misc. canners & roasters • 2 Iron skillets • Pressure cooker • Microwave stand • Waffle iron • Food dehydrator • Refrigerator filter • Misc. kitchen cabinets

**ELECTRONICS, ENTERTAINMENT, EXERCISE EQUIP.:**

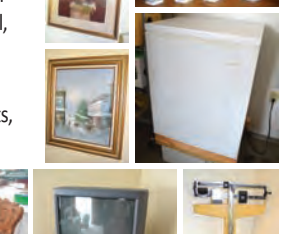
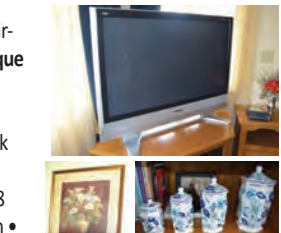
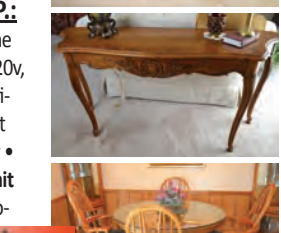
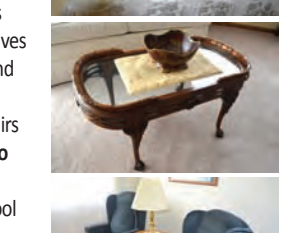
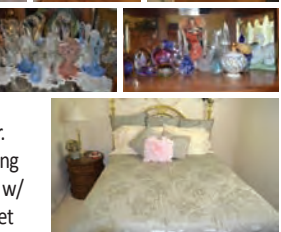
Gottlieb pinball machine • Electric dart board • Gumball machine • Womens 12lb bowling ball • Sunvision 28 bulb tanning bed, 220v, low hours • Pro Form 752 treadmill • Nordic Track CXT 980 elliptical machine • 32" Sony flat screen tv • 42" Panasonic plasma flat screen tv • 32" Toshiba flat screen tv • GE reciever & tape player • JVC tuner & cd player • JVC VHS player • Sony DVD player • 5 Unit Westinghouse wireless intercom system • Golf clubs, mens & womens set • Hockey skates • Misc. radio controll toys • Toy guitar • Movie projector screen • New Coleman jug • Ice fishing boxes • Fishing tackle box

**ANTIQUES, COLLECTIBLES, FIREARMS:**

Dry sink cabinet • Antique Fort Wayne postcard • 27" Round antique table • Antique rocker w/ leather bottom • Small antique baby doll cradle • Antique Cherry table • Antique round walnut mirror • Antique coffee table • Blue glass cannister set, heirloom, hand painted churches • Seth Thomas antique clock • 5 Drawer waterfall style dresser • 2 Antique stained glass windows • Antique beveled mirror • 5 Ceramic crocks • Milk can • Antique rocking chair • Antique doll crib • Railroad signal lanterns, 1 electrified, 4 way, St. Louis brand • Misc. railroad lanterns • Union Pacific brass spittoon • Misc. railroad books • Large 16' x 8' model railroad tables w/ cork track bed • Misc. beer signs • Neon beer light • Barbie dolls, in boxes • Crystal etched glass • Jugs • Homak metal gun cabinet, 8 rifle capacity • VJ Richards side by side, dbl barrel, 12 ga. shotgun • Remington model 514 bolt action rifle, .22 cal. • Crossman pistol, model 357, pellet gun, .177 cal. • Crossman rifle, model 622, .22 cal. pellet gun • 2 Black powder .50 cal. flintlock pistols

**MISC.:**

Large assortment of Christmas decorations; trees, lights, greeting signs, lighted Santa displays • Easter & Fall decorations



40 x 64 Pole Building on Tract 2

**MORE PHOTOS AVAILABLE ON OUR WEBSITE - www.schraderfortwayne.com**