

West Branch **ONLINE ONLY**
FARM EQUIPMENT AUCTION
December 12 - 15

Over 200 Lots!!

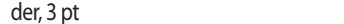
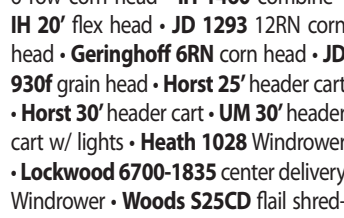
TRACTORS • DOZER SKIDLOADERS ANTIQUE TRACTORS

2013 NH T8.390 MFD tractor • 2012 JD 5045D tractor • JD 8400 MFWD tractor • 1997 JD 8400 MFWD tractor • 1989 JD 4755 MFD tractor • Versatile 895 tractor • 1969 JD 4520 diesel tractor • JD 9520 4 wheel drive tractor • JD 4430 CHA • MF 175 diesel tractor • NH 565 Skidsteer, (left side hydrostat is bad) • Ford Golden Jubilee w/ loader • Belarus 820M w/ loader • JD 2030 diesel tractor w/ 145 loader • Ford 8630 tractor • 1986 Deutz Allis 7120 tractor • Hesston 160-90 MFWD tractor, trans issues • Farmall Super A • Farmall 504 tractor • JD 1520 tractor w/ 48 loader • Ford 4000 diesel tractor • JD MT, original • Ford 8N tractor w/ Sherman trans • Ford 2000 gas tractor • International 300 utility tractor • International 275 diesel tractor • AC WD 45 w/blade • AC WD 45 wide frt tractor • Case LA tractor • Case L tractor • Case 630 NF gas tractor w/ loader • Dresser TD7G/ST Dozer



COMBINES • HEADS • CARTS BEAN & BEET EQUIPMENT

1989 JD 9500 combine 2WD • JD 643 6 row corn head • IH 1460 combine • IH 20' flex head • JD 1293 12RN corn head • Geringhoff 6RN corn head • JD 930f grain head • Horst 25' header cart • Horst 30' header cart • UM 30' header cart w/ lights • Heath 1028 Windrower • Lockwood 6700-1835 center delivery Windrower • Woods 525CD flail shredder, 3 pt



HAY & FORAGE EQUIPMENT

2009 Case IH WDX2303 swather • 2009 NH BB960A baler • 2009 NH 1441 15' Discbine • 2006 Hesston 1365 15' Discbine • NH 1495 self propelled Haybine • NH 499 Haybine • 2003 NH BR750 round baler • NH 648 round baler • 2006 NH BR770 round baler w/ net wrap • NH 900 chopper w/hay head • NH 360N 3 row head • Gehl 1250 chopper w/ hay head • Gehl 1065 chopper w/ hay head • JD 567 megawide silage round baler • JD 896 hay rake • Pequea 910 9' hay tedder • NH 822 2 row head • NH 900W Hayhead • NH 258 hay rake • Gehl TR3038 2RN chopper head • Kelly/Ryan 8' bagger w/ 150' cables • Gehl 970 silage wagon • NH 716 silage wagon • Hesston 10W stakmover • NI 325 2RN corn picker

SEMIS • TRAILERS TRUCKS • POLARIS RANGER

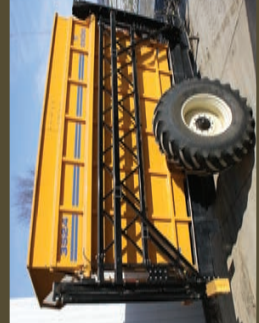
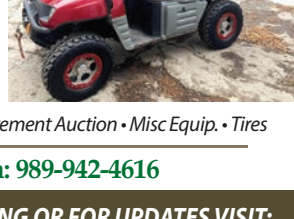
2006 Meyers Boss 8124 24' silage trailer • 1987 Freightliner semi tractor, 425 Cat • 1980 Ford L9000 semi tractor • 48' drop deck semi trailer • 2002 Ford F150 pick up truck • 2013 Load Max 21K gvw, tri-axle trailer 32' w/ top deck, ele. over hydraulic brakes • 1974 GMC grain truck, 2 spd axle, gas, dead tandem, 18' bed w/ hoist • 24' Steel semi dump trailer & 15' aluminum pup trailer • 2007 Polaris 700EFI Ranger, full cab 416 mi.

TILLAGE & PLANTING EQUIP.

Krause 2155 35' rockflex disc • Unverferth 225 rolling harrow, 46' • 3 ton SS fert spreader • Kongskilde SBC 26' field cultivator • CIH 496 32' disc/vertical till w/ wavy coulters • IH 490 32' disc • Brent CPC 7 shank disc ripper • AC snap couple 2 btm plow & 8' disc • Sunflower 42' Field Cultivator w/ 3 bar spike & rolling basket • JD 230 Disc, 26' • Landoll 875-25 25' disc finisher • Precision Planting 3200 32' vertical tillage • JD 10' disc, fresh paint • Ford 9' 3pt disc • JD 7100 12 row 3pt, liq fert corn planter 30" rows • Hardi sprayer • 12 Row 6 shank, 3pt anhydrous bar • CIH tandem 5100 soybean special drills w/ hitch, nice

MANY MORE ITEMS!!!!

Manure & Feeding Equip. • Farmer Semi Retirement Auction • Misc Equip. • Tires



SCHRADER
 Real Estate and Auction Company, Inc.
 950 N. Liberty Dr., Columbia City, IN 46725
 260-244-7606 • 800-451-2709
 e-mail: auctions@schraderauction.com

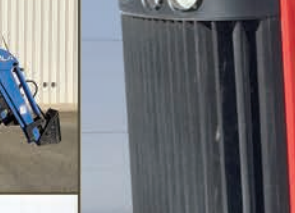
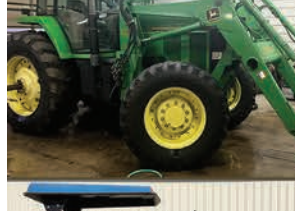
DECEMBER 2015

Sun	Mon	Tue	Wed	Thu	Fri	Sat
1	2	3	4	5	6	7
8	9	10	11	12	13	14
15	16	17	18	19	20	21
22	23	24	25	26	27	28
29	30					

AUCTION MANAGER:
 R.D. Schrader • 260-244-7606
 #ACR9001504, #AU01006815, #AU05200182



Follow us on:
www.SchraderAuction.com



Howe, Indiana

4 RINGS

FARM EQUIPMENT AUCTION

held in conjunction with the 4th Annual **Midwest FARM EXPO & AUCTION**
 FRI. & SAT., DECEMBER 11 & 12

ONLINE BIDDING AVAILABLE

SATURDAY, DECEMBER 12 • 9:00AM

SCHRADER
 Real Estate and Auction Company, Inc.

Contact Robert Mishler: 260-336-9750 or Dan Morrison: 989-942-4616

SCHRADER TO REGISTER FOR ONLINE BIDDING OR FOR UPDATES VISIT:
 Real Estate and Auction Company, Inc. **SchraderAuction.com • 800-451-2709**

PLATO CONSIGNMENT AUCTION

SATURDAY, DECEMBER 12 • 9:00AM

4 RINGS



AUCTION LOCATION:

Held at The Michiana Event Center, 7605 N St. Rd. 9, Howe, IN 46746 - between Sturgis, MI and Howe, IN on St. Rd. 9 or M66 in Michigan. Right off the 80/90 toll road, ext 121.

TRACTORS

2013 Versatile 310 MFWD, 340 hrs, deluxe cab, HID lights, 55 gpm hydra pump, wts, 3/4" low pressure return line, 4 remotes, 380-38 frnt duals, 480-50 rear duals, like new • **1984 JD 4650 MFWD, 9000 hrs,** new 15 spd pwr shift in 2013, 3 remotes, full set of wts, fenders, mirrors, 18.4-42 axle duals, very clean & sharp looking, 2 owner bought new local • **JD 8960, 8400 hrs,** good 20.8-42 all matching rubber, 3 remotes, quad trans, bare back, good tractor • **JD 8770, 6900 hrs,** 4 remotes, good 20.8-42 rubber, quad trans, bare back, good tractor • **2006 Versatile 2210 MFWD, 2900 hrs,** pwr shift, 55 gpm hydra pump, super steer, one owner, 380-34 frnt tires 480-46 rear duals, wts • **2006 CIH STX 480, 4900 hrs,** 4 remotes, bare back, 710/70R42 matching tires 75%, PS trans, good solid tractor • **JD 4640 CHA quad range, 18.4-38 axle duals, 7000 hrs,** 2 remotes, QH wts, local • **1982 JD 4440 CHA quad range, 18.4-38 axle duals, 2 remotes, shows 1970hrs,** good solid tractor uses no oil, local • **IH 966 w/ 1066 eng,** good strong tractor good TA • **JD 4320 diesel tractor, 18.4-38 rubber 80%, roll bar • JD 2010 gas utility tractor w/ JD 36A loader, new hydra pump, starter & alt, 14.8-28 tires like new, 3pt & center link, nice • JD 3020 D wide frnt, good paint • Kubota B7300, 837 hrs, 4x4 w/ mid mount mower & frnt snow blade • JD 3010 gas WF w/ JD 46 loader, bad clutch • 2003 NH TN65 4x4 loader tractor, MFWD, 1300hrs, always serviced at Bates NH w/ NH 32LA loader & skidloader quick tach • 1942 JD A older restoration • MM Jet Star Super gas, wf, new 16.9-28 tires w/ Kelley loader • MF 135 diesel wide frnt w/ loader • Farmall SM Cotton Special single frnt wheel, pwr steering, older restoration, runs good • Yale gas 3000lb fork lift, air tires • JD 555B diesel crawler loader w/ backhoe • 2011 Kubota B2920, 434hrs, 4x4, 29hp, hydro trans, 3pt, pto, one owner w/ loader • 2000 Kubota BX2200, 2900 hrs, hydro, 60" mower deck & loader • 426-C Cat Backhoe, cab heat, 4x4, extendahoe, 2400hrs, 1 owner**

TILLAGE & PLANTING EQUIP.

JD 510 7 shank disc ripper, very good points & blades • **JD 1000 30' field cultivator,** 3 bar spike harrow, walking tandem • **Sunflower 6332-23 disc finisher,** 5 bar spike harrow, spring disc gangs, rear hitch & hydra • **Wil-Rich 4830 chisel plow 23 shank 12" center • JD 1600 4btm 3pt mtd plow, good iron • JD 2600 5btm auto reset semi mtd plow • IH 800 11 btm plow 18" good iron • Krause 21' rock flex disc • Krause 1163 16' rock flex disc • 2006 JD 200 35' crumbler • 1996 JD 7200 Conservation 16RN liq fert planter, Martin row cleaner, Keaton seed firmers, in row & 2x2 fert, rear hitch, JD comp-trak 250, twin John Blue pumps, Precision corn & bean discs, Total Tubular in row, field ready, stored inside • JD 450 grain drill dble disc & press wheels good iron • JD 1560 15' dolly wheel no till drill, SI belt meters, good blades & boots, 7 1/2" markers, good drill • IH 620 24 run grain drill • IH 56 4 row dry fert planter w/ factory IH harrow & fiberglass boxes, stored inside, very nice • Ford 354 4 row dry fert planter, stored inside • 2004 DMI nutriplacer 16row 1600 gal., stored inside, new hubs & coulters in 2014, good cond • 1350 gal 16 row Nitrogen injector, all discs, knives • Ravens controller • White 271 Rock Flex disc 24' w/ new 22" blades • JD 230 disc 24'**

The following is new equipment and unused - all have factory warranty

2013 Versatile TD 500N 25' rock flex narrow fold disc, 24" blades, 5yr warranty new • 2013 Farm King 1460 1600 gal 16 row Nitrogen applicator, coulters w/ knife injector, 14.9-46 tires, Ace pump, 450 controller 8" sump, 9 gal fresh water, new • 2012 Farm King 1200 gal sprayer, 90' booms, 25 gal foam markers, 5.5gal inductor tank, 72"-120" adj. axle, 15 gal rinse tank, Raven 450 controller, hydra pump, new • 2014 J&M 620 grain cart, 14" auger, new 30.5-32 tires, 1000 pto, hydra spout control, new • 2014 Unverferth 225 26' dble basket w/ spike bar, new

MISC FARM EQUIPMENT PORTABLE OFFICE BUILDING

Roto Grind GG7 pto corn grinder/blower, same as new used twice • **New Idea single axle pto m. spreader • semi trailer dolly tandem axle • JD 450 hydra push single axle spreader • (2) J&M 250 gravity wagons on 8 ton gears, stored inside • Bushhog 15' batwing rotary mower • Woods C114 10' pull type rotary mower, nice,**

stored inside • **NH 352 grinder mixer works good, scales • SS 1000 gal tank & gas transfer pump on JD gear • 13"x35' belt conveyor on wheels & elec motor, used very little • 13"x30' belt conveyor, elec motor • Mayrath 10"x32' load out auger w/ att. boot • 14'x24' portable office w/ bathroom on skids, nice • Stainless steel endgate salt/sand spreader for dump truck, hyd. drive**

SEED CORN HARVESTER & EQUIP • COMBINE • CORN HEAD • HAY EQUIPMENT

Byron 8400 4x4 seed corn harvester, JD powered, JD corn head adapter plate • CIH 1660 combine, 4500 hrs, 30.5-32 rubber • Byron dump cart • Fargo dump cart wagon, rebuilt cylinders • JD 643 lo-tin oil bath corn head • JD 567 Mega wide rd baler, cover edge, net wrap, monitor • Kuhns 10 bale accumulator grapple for skidloader • NH 1010 stackliner, bale wagon • New Holland 1431 14' discbine, new knives

TRUCKS • CARS • BOAT • SEMI TRAILERS

1995 Ford F250 XLT diesel 4wd, power windows & locks, air, Reading service body, 246,500 mi. w/ Western snow blade mount & controls • 1996 Ford Ranger XLT 2WD, 5 spd trans, air, 230,100 mi. • 1982 Ford C8000 Cat V8, auto trans, grain truck 14' bed, 52" sides, scissors hoist, air brakes, new tires, nice • IH 1600 grain truck, 6.9 diesel, 5+2 trans., 16' bed, single door on back • 1998IH LPX dump truck, 157,049 mi., T444E diesel eng., fold down sides • 2005 Chevrolet 2500HD crew cab 4x4 6.0 gas, 200k mi., clean • 2002 VW Bug diesel, auto trans, 150k mi., silver • 1975 Starcraft speed boat w/ cover & trailer, nice • 1995 Ford F350 7.3 diesel, crane, air compressor, svc. bed, 150k mi. • 2002 VW Bug, 160k mi., auto trans, diesel TDI eng, silver • 102"x48' high side, live bottom trailer w/ tarp • HMT 40' hopper bottom grain trailer w/ roll tarp DOT inspected • 2006 Ford Harley Davidson Edition F350, diesel, auto, 4x4, 8' bed, 151k mi., drives good, leather,



Held in conjunction with the 4th Annual

Midwest FARM EXPO & AUCTION

Join us for 2 BIG DAYS

Fri., December 11 • Doors open at 9am • Seminars start at 9:30am • Exhibits open all day! • Go online for Seminar schedule

Sat., December 12 • Doors open at 8am • Auction starts at 9am • Kids Pedal Pull • Go to schraderauction.com for online bidding

www.midwestfarmexpo.com • www.schraderauction.com



Online Bidding Available



SINGLE FARMER CLOSE-OUT ITEMS

2015 C-IH 580 quad trac w/30" Camo-plast belts, 6 remotes, bareback, tier 4B, HID light pkg., heavy duty drawbar, luxury leather cab, heat & cool seat, Pro 700 Nav II 372 Waas auto steer, 240 hrs • 2012 18' Kuhn Krause Dominator 4850 disk/ripper w/ heavy duty axles & bearings on walking axles, Guardian hitch, 10" Nichols pts • 2013 Geringhoff 12x30 Northstar Elite XL hyd fold corn head • J&M tandem axle head highway transport w/ dual wheel frnt dolly • 2012 Oxbo 3524 dump cart w/ 5 pt Digistar scales, 2-1/2' box flare kit, 30.5L32 tires, 40 suitcase counter weights, 2200 ac. • 2001 Oxbo 8420 CWE seed harvester w/ 601C cleaning sys., 20' discharge elevator, 3865 eng. hrs, 2540 machine hrs • 2007 Miller Nitro 3275 HT diesel sprayer w/ 1400 gal SS tank, 380/90 R 50 tires, 3" fill, heavy duty lift cylinders, auxiliary hyd pump & cooling fan for detassling equip., Trimble compatible, 2615 hrs • 2012 Oxbo TS2 detassler w/ puller heads, 12 row on 4x1 pattern, 3500 ac. • 2012 Jo-Mar Weld 4 row male cutter • 2014 Doyle SS 150T/hr. field fertilizer under truck loader/conveyor w/ 24" belt, 20HP Honda & hyd self-drive option (used 2 hrs) • 2013 43' JD 2210 field cultivator w/ walking tandems, single touch depth control, 5 bar floating spike harrow & rear hitch • 2013 45' J&M TF215 dbl. rolling basket harrow • 2009 24x30" JD 1770 CCS planter w/ 1.6 bu. hoppers, hyd drive, Precision Planting 20/20 air down force pressure, air adjust Clean sweep Yetter shark tooth row cleaners, rubber closing wheels, Keaton seed firmers, AgXcelerator in furrow pop up w/ elec. pump through JD rate controller, 450 gal. poly tank • 66' Hawkins 6 row male dual barframe planter w/ Graham wireless control elec. drives, heavy lift cylinder sys., rear hitch • 40' Polk 4 row male planter w/ JD 7000 units • 8x30" JD 7000 wing fold finger sys. planter w/ squeeze pump liq. fert., trash eliminators, small round seed firmers, insecticide • 2012 15' JD CX15 bat wing rotary mower • JD RTK 2630 auto steer sys. w/ SF3000 receiver • 2013 Miller Nitro 5275 sprayer, Cummins 275 diesel, Ag-Leader Integra auto steer & product control, high-flow product pump, 1400 gal. SS tank, 3" fill, 120' /70' boom, 10 sec. auto shut off boom, Raven ultra glide boom leveling sys., 1" SS boom plumbing, 5 way nozzle bodies, fence row nozzles, air compressor for boom clean out, 380/90R50 tires, extra hyd pump, 992 hrs • 2013 Oxbo TS2 12 row cutter (4x1 pattern) w/ spray kit, 2000 ac. • 2014 Miller 15 shank nitrogen applicator, 2500 ac. • 2007 Kenworth T800 flat top semi tractor, sleeper, auto shift trans., Cat C-15 eng., wet kit, 680,000 mi.

loaded, rebuilt title • 2000 Ford F250 4x4, gas, auto trans, crew cab, leather, 6' bed, only 76k mi., nice, white & tan

NEW UNUSED ITEMS

94" Hydraulic angle skid loader dozer blade/ snow pusher • 18FT Heavy duty bi-parting wrought iron driveway gate • 125K BTU propane air forced heater • 170K BTU propane space heater • 12'x20' insulated tarp • 12'x28' Peak Ceiling carport C/W: commercial fabric, roll up door • 30'x85'x15' Peak Ceiling dbl. door storage building C/W: commercial fabric, waterproof, UV & fire resistant, 12'x12' drive through doors at 2 ends • 10'x10' Commercial instant pop up tent • 20'x20' Party tent, C/W: side walls, windows, zip doors • 50 Ton hyd. shop press • 80" Heavy duty multi drawer tool cabinet c/w: 12 drawers, 2x-large & 2x-small doors • Heavy Duty tire changer, c/w: 110v 60 hz • Heavy Duty wheel balancer c/w: 110v 60 hz • 10' 20-drawer HD work bench w/ hanging wall c/w 40" high hanging wall, stainless steel dr. panel, metal handles • 3 Ton Heavy duty chain hoist • 12 Ton pipe bender • 3"x30" recovery strap • 2000Lbs 12V ATV elec. winch • Air Hydraulic jack 20 ton • Porta Power 10 ton • Welding helmet solar auto darkening • 50' 3/8" rubber air hose • NEW 20+ Tomahawk skidloader buckets grapples, forks, material buckets, bale forks, etc • Large load Craftsman returns, shelf pulls & some new items, Husky wrenches, assort. tools • *Semi load of "NEW" gates 6'-20' cattle grain bunks, horse & cattle hay bunks, head gates, cattle chute w/ head gate • wagon load of new tack & horse related items.

SOUTHERN TRUCKS

2015 GMC 3500 SRW, 4x4, 6.0 gas eng, crew cab, 8' bed, 30k mi., white • 2012 Dodge 3500 SRW, 4x4, Cummins, crew cab, 8' bed, 134k mi., white • 2006 Chevrolet 2500HD Duramax, Allison, crew cab, cloth, 230K mi., flatbed w/ bale fork, white • 2011 Dodge 3500 4x4, Cummins, dually, 121k mi., flatbed, auto trans, white • 2001 Ford F350 4x4, 7.3 Power Stroke, auto trans, Stahl svc. bed, 140k mi.

Consigned by LaGrange Co. Hwy. Dept.

(2) 2000 WG 64 Volvo tandem axle dump trucks w/ Volvo engines, 8 spd double reduction trans. & underbody scrapers • (2) 1997 Ford TS 100 tractors w/ cabs • 1999 Chev. Lumina • 2002 Ford Explorer, 4WD

MISC • PLANTER PARTS

4 bunks of 4x8 MDF 5/16th & 1/2" w/ fiberglass coating on 1 side • dust dble fan collector • misc shop items • Army surplus 8hp generator • used 15 hp, 3 phase flat face elec. motor • (50) 10 qt. black pails (used for feeding baby calves) • 40 double bucket holders (for the pails listed) • 10 old cow stanchions • (3) indoor metal halogen light fixtures w/ new bulbs • (50) bee hive boxes • Clausing drill press • JD 1770 NT planter parts, Hyd variable rate motors, 16 precision planting finger pick up meters • (12) JD 7200 vac meters • 1000 gal fuel tank • 500 gal air tank • wagon



No Household • Auction Will Be Held Outdoors • Terms: Cash, Good Check and Credit Cards

For info Call Robert Mishler • 260-336-9750

SCHRADER
Real Estate and Auction Company, Inc.

800-451-2709 • schraderauction.com